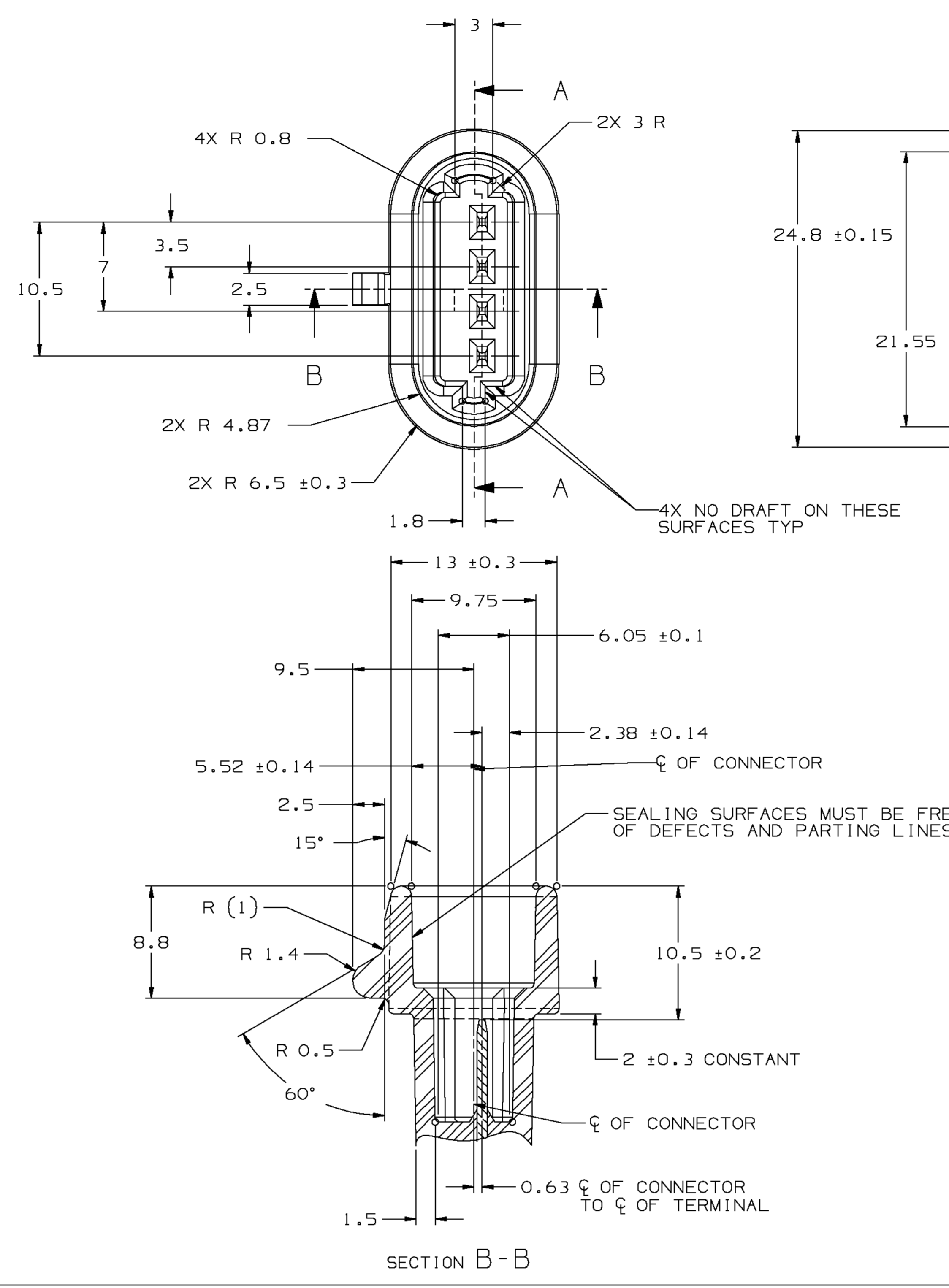
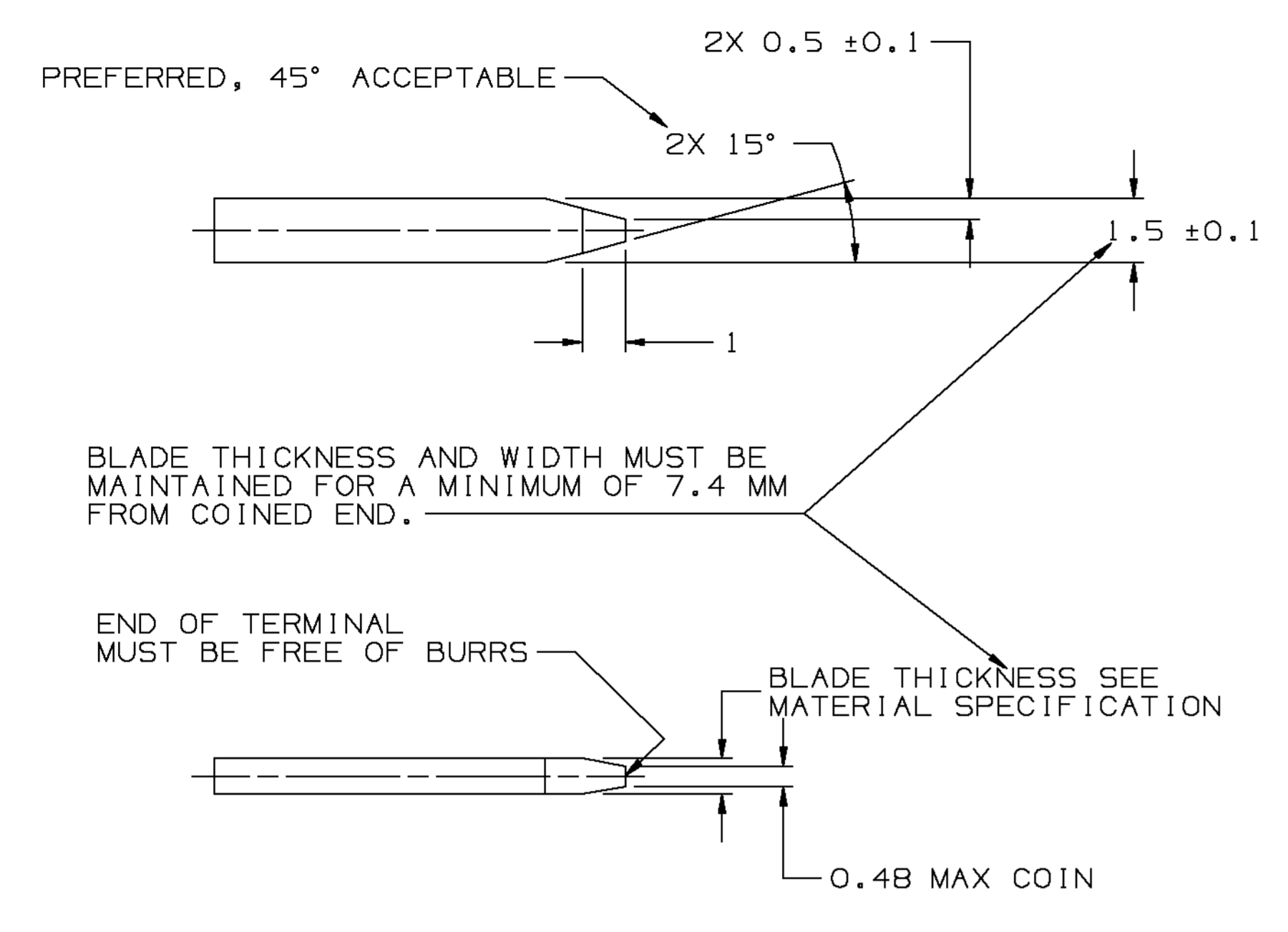


SYMBOL DEFINITION			MISSING NUMBERS			DATE			REVISED			ZONE			REVISION HISTORY			AUTH			DR			APVD		
THE NUMBER INSIDE THE SYMBOL CORRESPONDS TO THE NUMBER ON THE INSPECTION REPORT FOR THIS DRAWING/PART NUMBER	TOTAL NO. OF SYMBOLS ON DRAWING	17																								
	LAST NO. USED	17																								



MATERIAL SPECIFICATIONS

RECOMMENDED
BASE METAL - CDA-210, GILDING, EXTRA SPRING TEMPER
PLATING - 0.005 ± 0.0025 MM THK TIN

MINIMUMS
ELECTRICAL CONDUCTIVITY - ≥ 20% IACS ± 20°C. USE OF A MATERIAL WITH CONDUCTIVITY < 20% IACS MUST BE APPROVED BY PACKARD ELECTRIC MATERIALS ENGINEERING.

TENSILE STRENGTH - 407 MPa

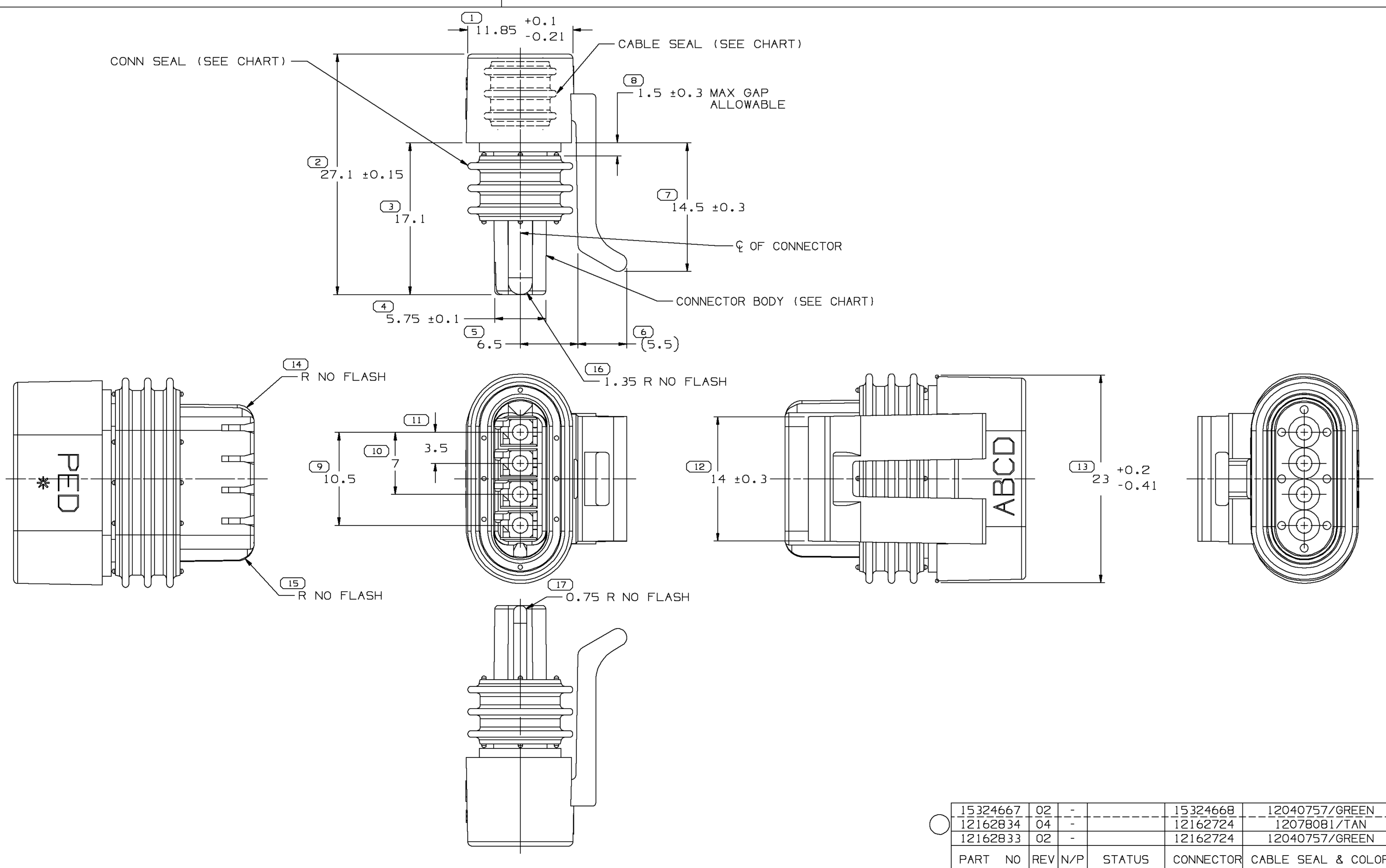
PLATING - FOR LOW ENERGY (< 5 V) AND NON-PASSENGER COMPARTMENT POWER CIRCUITS, 0.005 ± 0.0025 MM THICK TIN. FOR MATERIALS CONTAINING 10% OR MORE ZINC, AN UNDERPLATE OF COPPER 0.005 ± 0.0025 MM THICK IS REQUIRED.

BLADE THICKNESS
UNPLATED = 0.813 ± 0.025
TIN PLATED = 0.823 ± 0.03

MATING BLADE INFORMATION
SCALE 8:1

- NOTES:
- UNLESS OTHERWISE SPECIFIED AND/OR INDICATED: DIMENSIONS ARE TO FACE OF VIEW SHOWN ALL RADII 0.4 DRAFT IS 1° ON ALL OUTSIDE SURFACES
 - RECOMMENDED MATERIAL - GLASS FILLED NYLON OR POLYESTER.
 - WHEN USING THIS INFORMATION FOR A NEW DESIGN, REQUEST THE LATEST COPY OF THIS PRINT FROM PACKARD ELECTRIC DIVISION.

MATING CONNECTOR INFORMATION



- NOTES:
- UNLESS OTHERWISE SPECIFIED AND/OR INDICATED: DIMENSIONS ARE TO FACE OF VIEW SHOWN AND AUTOMATICALLY ROUNDED BY COMPUTER FOR INSPECTION (SEE MATH MODEL FOR PRECISE DIMENSIONS). FOR ALL OTHER DIMENSIONS NOT SHOWN BUT REQUIRED FOR TOOL BUILD, SEE MATH MODEL FOR PRECISE TOOL PATH DATA.
 - WHEN PARTS ARE SHIPPED THEY MUST BE PACKED IN PLASTIC BAGS OR SHIPPING CONTAINERS MUST BE LINED WITH PLASTIC LINERS. BAGS OR LINERS MUST BE SEALED TO AVOID FOREIGN MATTER.
 - SEALING CODE 3 - DESIGN WILL PASS SALT FOG AND IMMERSION TEST AFTER CONDITIONING AS SPECIFIED IN ESA-644 (WEATHER-PACK), ESA-710 (METRI-PACK), ESA-650 (UNDERHOOD MICRO-PACK), C-4006 (WORLD CONNECTOR), ETC WHEN MATED TO MATING PART OR EQUIVALENT
 - THIS PART ACCEPTS THE FOLLOWING COMPONENTS OR EQUIVALENT: CAVITIES TO ACCEPT 12124075 TERMINAL MATES TO CRANKSHAFT SENSOR
 - CONNECTOR ENGAGE FORCE CODE.
 - FOR LEAD LENGTH CALCULATIONS, DISTANCE FROM MATING END OF CONNECTOR TO FRONT OF CABLE CORE IS 8.5 ± 1.55.

PART NO	REV	N/P	STATUS	CONNECTOR	CABLE SEAL & COLOR	CONN SEAL
15324667	02	-		15324668	12040757/GREEN	12040756
12162834	04	-		12162724	12078081/TAN	12040756
12162833	02	-		12162724	12040757/GREEN	12040756

DIMENSIONAL RANGE (MM)	TOLERANCE	CHART ET
FROM 0 TO > 20	> 0.15	1
> 20 TO > 30	> 0.2	2
> 30 TO > 50	> 0.3	3
> 50 TO > 100	> 0.4	4
> 100 TO > 150	> 0.5	5
> 150 TO > 200	> 0.6	6
> 200 TO > 250	> 0.8	7
> 250 TO > 300	> 1.0	8
> 300 TO > 400	> 1.2	9

DATE	BY	CHKD	ZONE
09SE02	R	06	-

DATE	BY	CHKD	ZONE
12162834	-	-	-

DATE	BY	CHKD	ZONE
15324919	-	-	-

DELPHI
DELPHI PACKARD ELECTRIC SYSTEMS
WARREN, OH

DATE	BY	CHKD	ZONE
25SE95	P. OSEGUERA	-	-
25SE95	R. RAMOS G.	-	-
26SE95	T. E. UHLIR	-	-
12JA96	-	-	-

UNLESS OTHERWISE SPECIFIED
THIS DOCUMENT IS IN ACCORDANCE WITH ASME Y14.5M-1994
AS AMENDED BY THE GW GLOBAL DIMENSIONING AND TOLERANCING ADDENDUM 1993. ALL DIMENSIONS TO SURFACES AND RELATED DATUMS APPLY UNLESS OTHERWISE SPECIFIED. TOLERANCES UNLESS OTHERWISE SPECIFIED ARE ESTABLISHED BY ORIENTATION OR LOCATION TOLERANCES. SEPARATE POSITION CALLOUTS MAY BE USED SEPARATELY, REGARDLESS OF DATUM REFERENCE.

UNLESS OTHERWISE SPECIFIED
DIMENSIONS ENCLOSED IN () INDICATE REFERENCE DIMENSIONS AND NO TOLERANCE LIMITS ARE ESTABLISHED

PROCESS SENSITIVE DIMENSION
(B)

THIRD ANGLE PROJECTION

DO NOT SCALE
USE MATH DATA

DRAWING NAME
TAXI ASM CONN 4F M/P 150.2 P25

DRAWING NUMBER
12162835

SIZE	SCALE	FRAME NO	SHEET NO	STG	REV	N/P
A0	4:1	1	1	1	1	R