

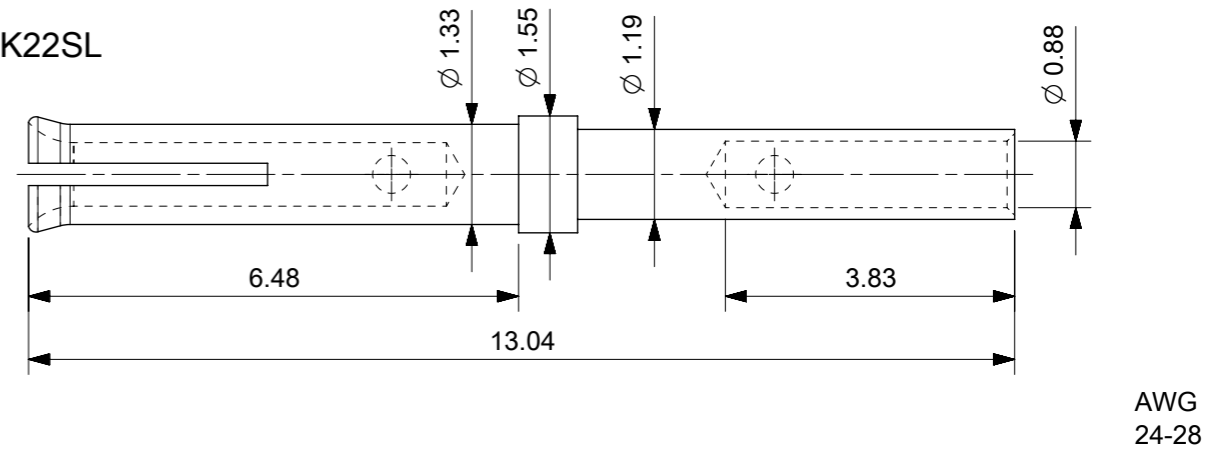
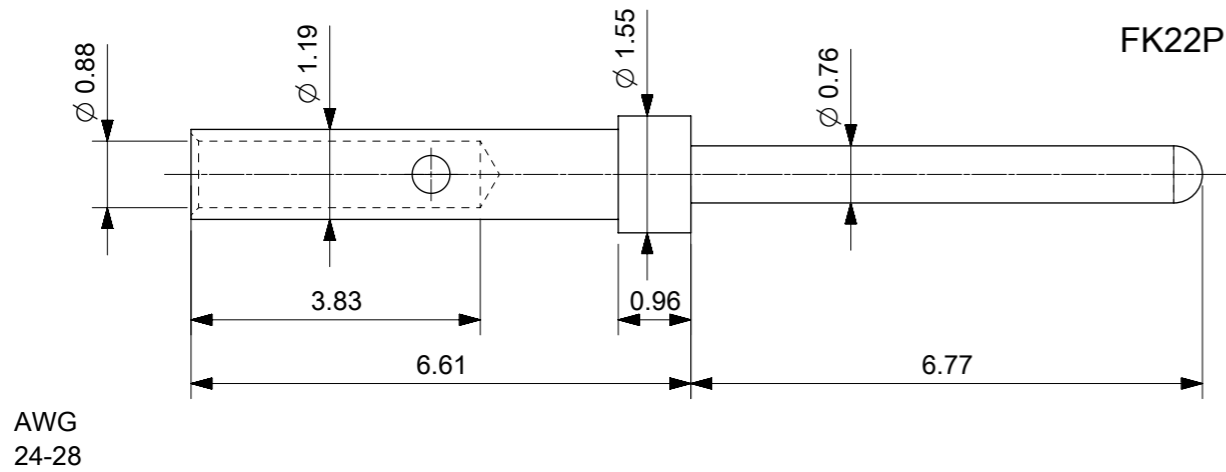
RoHS COMPLIANT BY EXEMPTION

PIN MATERIAL: BRASS

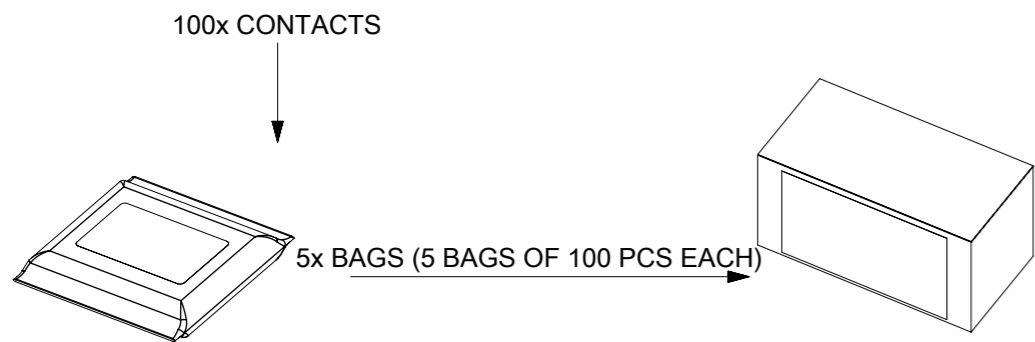
SOCKET MATERIAL: COPPER ALLOY

FK22P

FK22SL



PACKING UNIT



CRIMPING TOOLS SEE CATALOGUE

1731120228	FK22SL-13V-5783	1.3µm Au (OVER Ni)
1731120227	FK22SL-08V-5783	0.8µm Au (OVER Ni)
1731120226	FK22SL-02V-5783	0.2µm Au (OVER Ni)
1731120225	FK22P-13V-5783	1.3µm Au (OVER Ni)
1731120224	FK22P-08V-5783	0.8µm Au (OVER Ni)
1731120223	FK22P-02V-5783	0.2µm Au (OVER Ni)
MOLEX PART NO#	FCT PART#	SURFACE PLATING/COLOR/CLASS

QUALITY SYMBOLS		THIS DRAWING CONTAINS INFORMATION THAT IS PROPRIETARY TO MOLEX ELECTRONIC TECHNOLOGIES, LLC AND SHOULD NOT BE USED WITHOUT WRITTEN PERMISSION		DIMENSION UNITS		SCALE							
▽A	= 0	EC NO: 117803 DRWN: RLALSANGI CHK'D: ISHWARG APPR: ISHWARG	2017/04/27 2017/06/07 2017/06/07	MM		10:1						HPD HIGH DENSITY CRIMP CONTACT, MACHINED MALE PIN / FEMALE SOCKET	
▽E	= 0			GENERAL TOLERANCES (UNLESS SPECIFIED)		DRWN BY		DATE					
▽F	= 0			ANGULAR TOL ± °		CHK'D BY		DATE					
▽G	= 0			4 PLACES ±		ISHWARG		2017/06/07					
▽H	= 0			3 PLACES ±		APPR BY		DATE					
▽I	= 0			2 PLACES ±		ISHWARG		2017/06/07					
▽J	= 0	1 PLACE ±		DRAWING SIZE		THIRD ANGLE PROJECTION		PRODUCT CUSTOMER DRAWING					
▽K	= 0	0 PLACES ±		A3				SERIES		MATERIAL NUMBER		CUSTOMER	
▽L	= 0	DRAFT WHERE APPLICABLE MUST REMAIN WITHIN DIMENSIONS		A				173112		SEE TABLE		GENERAL MARKET	
▽M	= 0			REV				DOCUMENT NUMBER		DOC TYPE		DOC PART SHEET NUMBER	
				A				1731120223		PSD		000 1 OF 1	