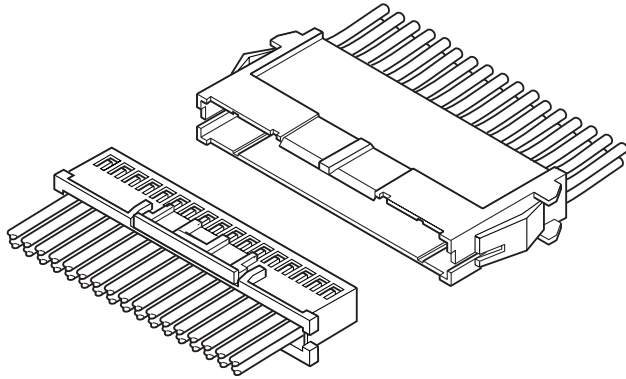




# XAD CONNECTOR

2.5mm pitch/Disconnectable Crimp style wire-to-wire connectors



**2.5mm pitch grid (dual in row) wire-to-wire connector that can mate with the socket of XAD connector (board-to-wire type).**

- Possible to mate with the existing XAD socket
- Inner type contact lance
- Mountable on a variety of panels
- Secure lock construction

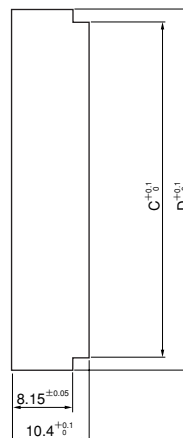
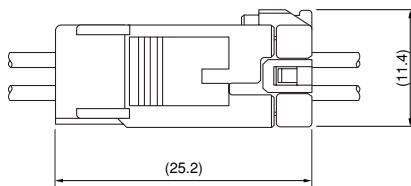
## Specifications

- Current rating: 3A AC, DC max. (AWG #20)
- Voltage rating: 250V AC, DC max.
- Temperature range: -25°C to +85°C  
(including temperature rise in applying electrical current)
- Contact resistance: Initial value/10m Ω max.  
After environmental testing/20m Ω max.
- Insulation resistance: 500M Ω min.
- Withstanding voltage: 1,500V AC/minute
- Applicable wire: AWG #28 to #20
- \* RoHS compliant products are published.
- \* Refer to "General Instruction and Notice when using Terminals and Connectors" at the end of this catalog.
- \* Contact JST for details.

## Standards

- Ⓜ Recognized E60389
- Ⓢ Certified LR20812

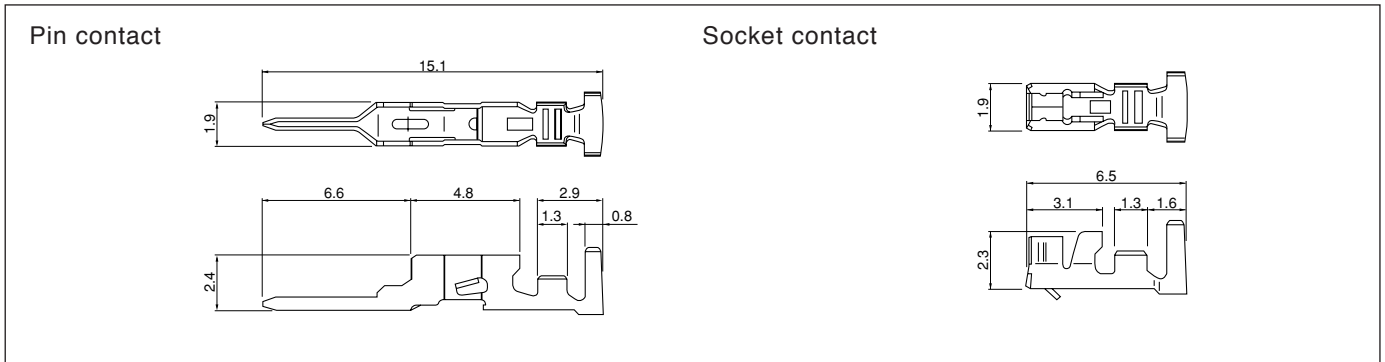
## Assembly layout and Panel layout



Note: C and D dimensions: Refer to receptacle housing.

# XAD CONNECTOR

## Contact



Model No.		Applicable wire		Insulation O.D.(mm)	Q'ty / reel	
Pin contact	Socket contact	mm <sup>2</sup>	AWG #		Pin contact	Socket contact
<b>SXAM-001T-P0.6</b>	<b>SXA-001T-P0.6</b>	0.08~0.33	28~22	1.2~1.9	7,000	8,000
<b>SXAM-01T-P0.6</b>	<b>SXA-01T-P0.6</b>	0.22~0.5	24~20	1.5~1.9	7,000	8,000
—	<b>SXA-001T-P0.6L</b>	0.13~0.33	26~22	1.3~1.7	—	8,000

### Material and Finish

Phosphor bronze, tin-plated (reflow treatment)

### RoHS compliance

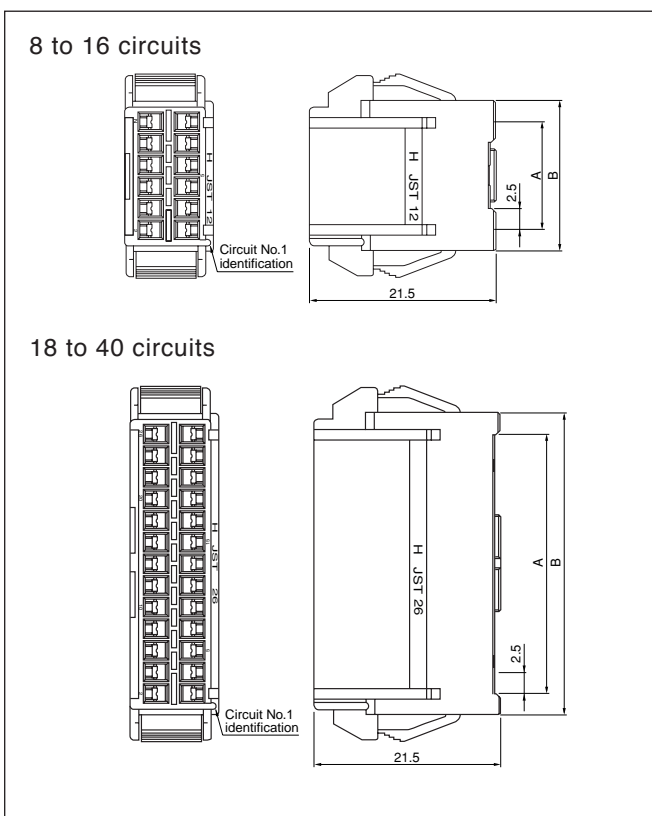
Note: Contact JST for gold-plated products.

Contact	Crimping machine	Applicator		
		Crimp applicator	Dies	Crimp applicator with dies
<b>SXA-001T-P0.6</b>	AP-K2N	MKS-L	MK/SXAM/XA-001-06	APLMK SXAM/XA001-06
		*MKS-SC	SC/SXAM/XA-001-06	APLSC SXAM/XA001-06
<b>SXA-01T-P0.6</b>		MKS-L	MK/SXAM/XA-01-06	APLMK SXAM/XA01-06
		*MKS-SC	SC/SXAM/XA-01-06	APLSC SXAM/XA01-06
<b>SXA-001T-P0.6L</b>	MKS-L	MK/SXA-001-06L	APLMK SXA001-06L	
	*MKS-SC	SC/SXA-001-06L	APLSC SXA001-06L	

Contact	Crimping machine	Applicator		
		Crimp applicator	Dies	Crimp applicator with dies
<b>SXAM-001T-P0.6</b>	AP-K2N	MKS-L	MK/SXAM/XA-001-06	APLMK SXAM/XA001-06
		*MKS-SC	SC/SXAM/XA-001-06	APLSC SXAM/XA001-06
<b>SXAM-01T-P0.6</b>		MKS-L	MK/SXAM/XA-01-06	APLMK SXAM/XA01-06
		*MKS-SC	SC/SXAM/XA-01-06	APLSC SXAM/XA01-06

Note: \*Strip-crimp applicator

## Receptacle housing



Circuits	Model No.	Dimensions (mm)				Q'ty/bag
		A	B	C	D	
8	<b>XADR-08V</b>	7.5	12.5	12.9	16.2	1,000
10	<b>XADR-10V</b>	10.0	15.0	15.4	18.7	500
12	<b>XADR-12V</b>	12.5	17.5	17.9	21.2	500
14	<b>XADR-14V</b>	15.0	20.0	20.4	23.7	500
16	<b>XADR-16V</b>	17.5	22.5	22.9	26.2	300
18	<b>XADR-18V</b>	20.0	25.0	25.4	28.7	300
20	<b>XADR-20V</b>	22.5	27.5	27.9	31.2	300
22	<b>XADR-22V</b>	25.0	30.0	30.4	33.7	300
24	<b>XADR-24V</b>	27.5	32.5	32.9	36.2	300
26	<b>XADR-26V</b>	30.0	35.0	35.4	38.7	300
28	<b>XADR-28V</b>	32.5	37.5	37.9	41.2	300
30	<b>XADR-30V</b>	35.0	40.0	40.4	43.7	300
32	<b>XADR-32V</b>	37.5	42.5	42.9	46.2	300
34	<b>XADR-34V</b>	40.0	45.0	45.4	48.7	200
36	<b>XADR-36V</b>	42.5	47.5	47.9	51.2	200
40	<b>XADR-40V</b>	47.5	52.5	52.9	56.2	200

### Material

PA 66, UL94V-0, natural (white)

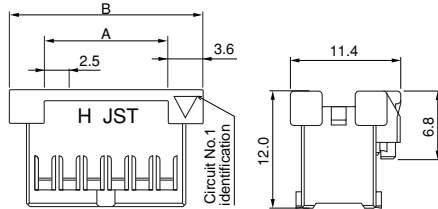
### RoHS compliance

Note: C and D dimensions: Panel layout dimensions

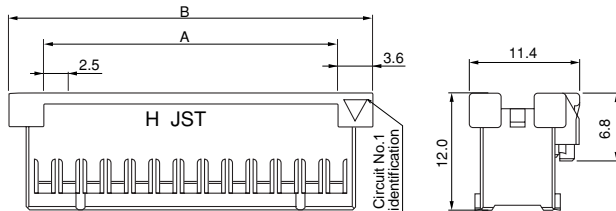
# XAD CONNECTOR

## Plug housing

8 to 16 circuits



18 to 40 circuits



Circuits	Model No.	Dimensions (mm)		Qty/bag
		A	B	
8	<b>XADRP-08V</b>	7.5	14.7	1,000
10	<b>XADRP-10V</b>	10.0	17.2	1,000
12	<b>XADRP-12V</b>	12.5	19.7	1,000
14	<b>XADRP-14V</b>	15.0	22.2	1,000
16	<b>XADRP-16V</b>	17.5	24.7	1,000
18	<b>XADRP-18V</b>	20.0	27.2	1,000
20	<b>XADRP-20V</b>	22.5	29.7	500
22	<b>XADRP-22V</b>	25.0	32.2	500
24	<b>XADRP-24V</b>	27.5	34.7	500
26	<b>XADRP-26V</b>	30.0	37.2	500
28	<b>XADRP-28V</b>	32.5	39.7	500
30	<b>XADRP-30V</b>	35.0	42.2	500
32	<b>XADRP-32V</b>	37.5	44.7	500
34	<b>XADRP-34V</b>	40.0	47.2	500
36	<b>XADRP-36V</b>	42.5	49.7	500
40	<b>XADRP-40V</b>	47.5	54.7	250

### Material

PA 66, UL94V-0, natural (white)

*RoHS compliance*