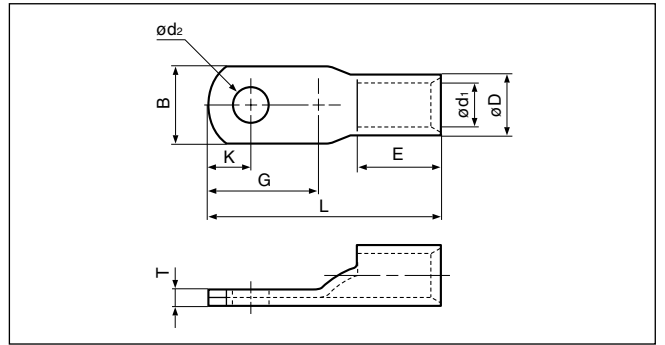


COPPER TUBULAR LUGS (One-hole)



Applicable Wire AWG#(mm²)	Stud size		Part No.	Standard	Dimensions mm (in.)									Tool No.										Qty/box																							
	American	Metric			ød ₂	B	L	E	G	K	øD	ød ₁	T	YHT-2210	YHT-8S	YA-1	YA-2	YA-4	YA-5	YPT-60N	YPT-150-1	BCT-0514	BCT-860N		BCT-8150	YET-60-1	YET-150-1	YET-300-1	E-4																		
250/300 (117.2 to 152.05)	3/8	10	TU150-10		11.0 (.433)	38.0 (1.496)	88.0(3.465)	34.5 (1.358)	36.3(1.429)	16.5 (.650)	26.5 (1.043)	19.5 (.768)	7.0 (.276)																																		
	7/16	11	TU150-11		12.0 (.472)																																										
	1/2	12	TU150-12		14.0 (.551)																																										
	5/8	16	TU150M-16		18.0 (.709)										95.5(3.760)		43.8(1.724)	20.0 (.787)																													
	5/8	16	TU150L-16		18.0 (.709)										98.0(3.858)		46.3(1.823)																														
	3/4	20	TU150M-20		22.0 (.866)										95.5(3.760)		43.8(1.724)																														
	3/4	20	TU150L-20		22.0 (.866)										98.0(3.858)		46.3(1.823)																														
350 (152.05 to 192.60)	3/8	10	TU180-10		11.0 (.433)	41.0 (1.614)	92.0(3.622)	36.5 (1.437)	38.3(1.508)	16.5 (.650)	28.5 (1.122)	21.0 (.827)	7.7 (.303)																																		
	7/16	11	TU180-11		12.0 (.472)																																										
	1/2	12	TU180-12		14.0 (.551)																																										
	5/8	16	TU180M-16		18.0 (.709)										104.0(4.095)		50.0(1.969)	22.5 (.886)																													
	5/8	16	TU180L-16		18.0 (.709)										106.0(4.173)		52.0(2.047)																														
	3/4	20	TU180M-20		22.0 (.866)										104.0(4.095)		50.0(1.969)																														
	3/4	20	TU180L-20		22.0 (.866)										106.0(4.173)		52.0(2.047)																														
	7/8	22	TU180M-22		24.0 (.945)										104.0(4.095)		50.0(1.969)																														
7/8	22	TU180L-22		24.0 (.945)		106.0(4.173)		52.0(2.047)																																							
400 (192.60 to 242.27)	3/8	10	TU200-10		11.0 (.433)	46.0 (1.811)	101.0(3.976)	37.0 (1.457)	46.3(1.823)	21.0 (.827)	32.5 (1.280)	24.0 (.945)	8.5 (.335)																																		
	7/16	11	TU200-11		12.0 (.472)																																										
	1/2	12	TU200-12		14.0 (.551)																																										
	5/8	16	TU200M-16		18.0 (.709)										109.0(4.291)		54.0(2.126)	26.0(1.024)																													
	5/8	16	TU200L-16		18.0 (.709)										113.0(4.449)		58.0(2.284)																														
	3/4	20	TU200M-20		22.0 (.866)										109.0(4.291)		54.0(2.126)																														
	3/4	20	TU200L-20		22.0 (.866)										113.0(4.449)		58.0(2.284)																														
	7/8	22	TU200M-22		24.0 (.945)										109.0(4.291)		54.0(2.126)																														
7/8	22	TU200L-22		24.0 (.945)		113.0(4.449)		58.0(2.284)																																							
600/650 (242.27 to 325)	3/8	10	TU325-10		11.0 (.433)	53.0 (2.087)	112.5(4.429)	42.0 (1.654)	51.8(2.039)	23.0 (.906)	37.0 (1.457)	28.0 (1.102)	9.0 (.354)																																		
	7/16	11	TU325-11		12.0 (.472)																																										
	1/2	12	TU325-12		14.0 (.551)																																										
	5/8	16	TU325M-16		18.0 (.709)										121.0(4.764)		60.0(2.362)	29.0(1.142)																													
	5/8	16	TU325L-16		18.0 (.709)										127.0(5.000)		66.0(2.598)																														
	3/4	20	TU325M-20		22.0 (.866)										121.0(4.764)		60.0(2.362)																														
	3/4	20	TU325L-20		22.0 (.866)										127.0(5.000)		66.0(2.598)																														
	1	27	TU325M-27		29.0(1.142)										121.0(4.764)		60.0(2.362)																														
	1	27	TU325L-27		29.0(1.142)										127.0(5.000)		66.0(2.598)																														

Note:1) Delivery lead times may vary depending on the product. Contact JST for details.

