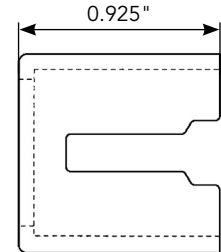
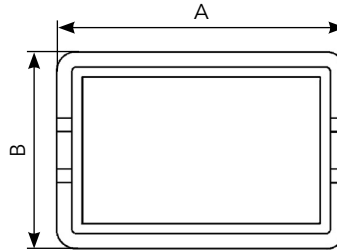


Accessories for standard Quick Mating connectors

Pin protection shroud for panel mount receptacle

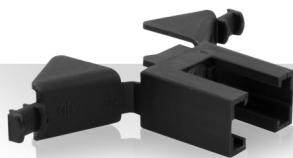


When pins are inserted into the panel mount receptacle half (SMS...R1) of the Quick Mating connector, an optional pin protection shroud can be installed.

The shroud is mounted at the same time as the receptacle by holding the shroud against the mating side of the panel with both cut-outs lined up. The receptacle is then inserted in place, trapping the shroud between the receptacle and panel. The use of the pin protection shroud reduces the allowable thickness of the panel from 2.3 to 1.6 mm max.

Part number	Nbr. of contact position	A	B
Black UL94 V2			
SMS2CSB1	2	0.779"	0.740"
SMS3CSB1	3	0.921"	
SMS4CSB1	4	1.118"	
SMS6CSB1	6	0.921"	0.940"
SMS9CSB1	9		1.141"
SMS12CSB1	12		1.338"
SMS15CSB1	15		1.539"
SMS18CSB1	18	1.118"	1.740"
SMS24CSB1	24		
SMS36CSB1	36		2.129"

Strain relief hoods



Separate strain relief hoods are available for all standard plugs SMS...P1. The hoods consist of identical halves that snap into position on the plug and are secured in place with the cable tie drawn tightly around the cable entry collar.

Catalog numbers designate a complete hood (2 halves) SMS...H1.

The cable tie is not included (TF4D – TF5D).

Two, three and four position hoods are single piece units.

Part number	Nbr. of contact position
Black UL94 V2	
SMS2H1	2
SMS3H1	3
SMS4H1	4
SMS6H1	6
SMS9H1	9
SMS12H1	12
SMS15H1	15
SMS18H1	18
SMS24H1	24
SMS36H1	36

Discrimination pins

For discrimination pins on both standard Quick Mating and Quick Mating Pin Headers cable and board mount:
See accessories section.

Note: all dimensions are in inches