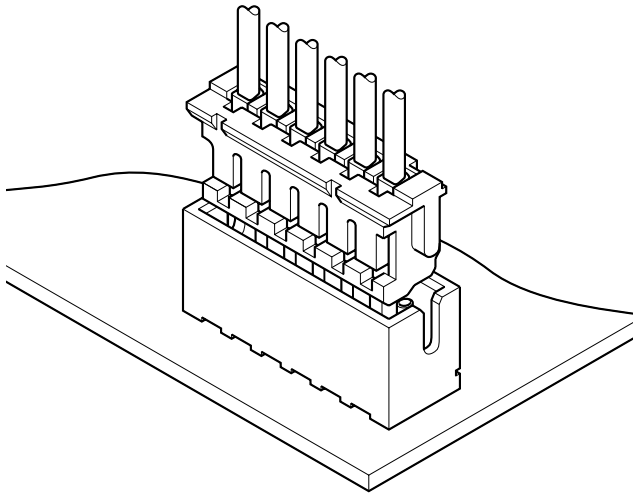


# ZH CONNECTOR

1.5mm pitch/Disconnectable Crimp style connectors



The ZH connector is very small with a mounting height of 5.6mm and a thickness of only 3.5mm. Contact retention lances on the housing make insertion easier, while the dimple at the center of the contact ensures reliable contact with the post.

- Compact, low profile design
- Housing lances
- Reliable contact construction
- Distortion resistant construction
- Compatible with the ZR insulation displacement connectors

## Specifications

- Current rating: 1.0A AC, DC (AWG #26)
- Voltage rating: 50V AC, DC
- Temperature range: -25°C to +85°C  
(including temperature rise in applying electrical current)
- Contact resistance: Initial value/20m Ω max.  
After environmental testing/30m Ω max.
- Insulation resistance: 500M Ω min.
- Withstanding voltage: 500V AC/minute
- Applicable wire: AWG #32 to #26
- Applicable PC board thickness: 0.6 to 1.2mm, 1.6mm
- \* Compliant with RoHS.
- \* Refer to "General Instruction and Notice when using Terminals and Connectors" at the end of this catalog.
- \* Contact JST for details.

## Standards

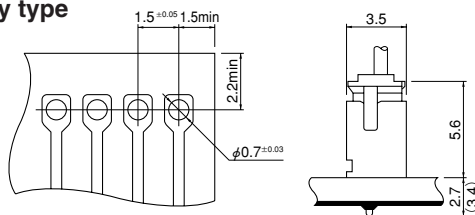
Recognized E60389

Certified LR20812

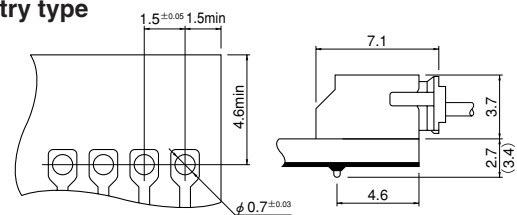
## PC board layout and Assembly layout

### <Through-hole type (viewed from soldering side) >

#### Top entry type



#### Side entry type



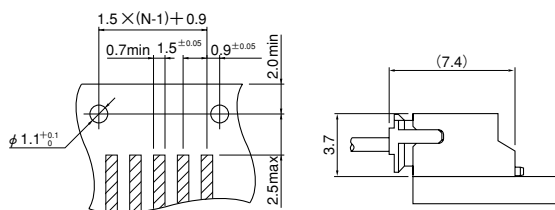
Note: 1. Tolerances are non-cumulative: ±0.05mm for all centers.

2. Hole dimension differ according to the kind of PC board and piercing method. If PC boards made of hard material are used, the hole dimensions should be larger. The dimensions above should serve as a guideline. Contact JST for details.

### <SMT type (viewed from component side) >

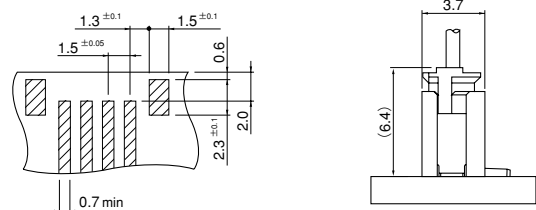
#### SM2 type

##### Side entry type

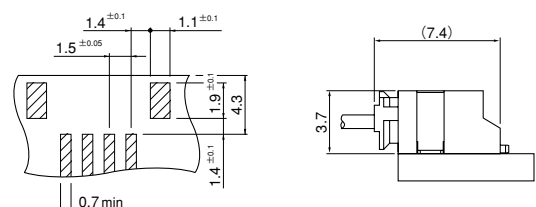


#### SM4 type

##### Top entry type



##### Side entry type



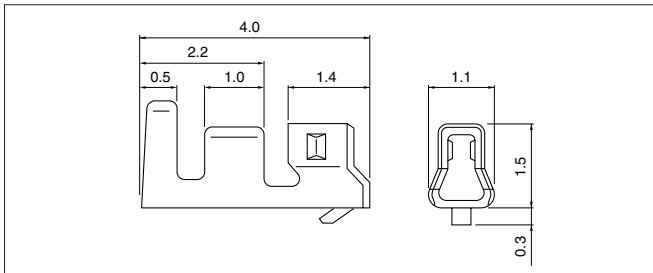
Note: 1. N...Number of circuits

2. Tolerances are non-cumulative: ±0.05mm for all centers.

3. The dimensions above should serve as a guideline. Contact JST for details.

# ZH CONNECTOR

## Contact



| Contact       | Crimping machine | Applicator       |               |                            |
|---------------|------------------|------------------|---------------|----------------------------|
|               |                  | Crimp applicator | Dies          | Crimp applicator with dies |
| SZH-002T-P0.5 | AP-K2N           | MKS-L            | MK/SZH-002-05 | APLMK SZH002-05            |

Note: \*Strip-crimp applicator.

| Model No.     | Applicable wire |       |                      | Q'ty / reel |
|---------------|-----------------|-------|----------------------|-------------|
|               | mm <sup>2</sup> | AWG#  | Insulation O.D. (mm) |             |
| SZH-002T-P0.5 | 0.08 ~0.13      | 28~26 | 0.8~1.1              | 13,000      |
| SZH-003T-P0.5 | 0.032~0.08      | 32~28 | 0.5~0.9              | 16,000      |

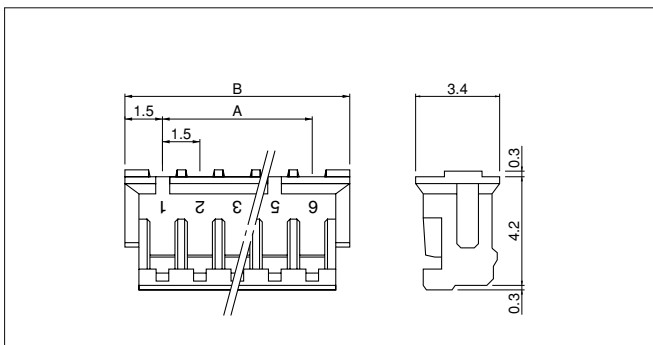
### Material and Finish

Phosphor bronze, tin-plated (reflow treatment)

### RoHS compliance

| Contact       | Crimping machine | Applicator       |               |                            |
|---------------|------------------|------------------|---------------|----------------------------|
|               |                  | Crimp applicator | Dies          | Crimp applicator with dies |
| SZH-003T-P0.5 | AP-K2N           | MKS-L            | MK/SZH-003-05 | APLMK SZH003-05            |
|               |                  | *MKS-SC          | SC/SZH-003-05 | APLSC SZH003-05            |

## Housing



<For reference> As the color identification, the following alphabet shall be put in the underlined part. For availability, delivery and minimum order quantity, contact JST.

ex. **ZHR-2-oo**

(blank)...natural (white)

K...black R...red E...blue M...green L...lemon yellow

LE...light blue DO...dark orange H...gray

| Circuits | Model No.         | Dimensions (mm) |      | Q'ty / bag |
|----------|-------------------|-----------------|------|------------|
|          |                   | A               | B    |            |
| 2        | <b>ZHR-2</b>      | 1.5             | 4.5  | 1,000      |
| 3        | <b>ZHR-3</b>      | 3.0             | 6.0  | 1,000      |
| 4        | <b>ZHR-4</b>      | 4.5             | 7.5  | 1,000      |
| 5        | <b>ZHR-5</b>      | 6.0             | 9.0  | 1,000      |
| 6        | <b>ZHR-6</b>      | 7.5             | 10.5 | 1,000      |
| 6        | <b>ZHR-6(3.0)</b> | 15.0            | 18.0 | 1,000      |
| 7        | <b>ZHR-7</b>      | 9.0             | 12.0 | 1,000      |
| 8        | <b>ZHR-8</b>      | 10.5            | 13.5 | 1,000      |
| 9        | <b>ZHR-9</b>      | 12.0            | 15.0 | 1,000      |
| 10       | <b>ZHR-10</b>     | 13.5            | 16.5 | 1,000      |
| 11       | <b>ZHR-11</b>     | 15.0            | 18.0 | 1,000      |
| 12       | <b>ZHR-12</b>     | 16.5            | 19.5 | 1,000      |
| 13       | <b>ZHR-13</b>     | 18.0            | 21.0 | 1,000      |

### Material

PA 66, UL94V-0, natural (white)

### RoHS compliance

Note: 1. ZHR-6(3.0) is 6 circuits 3.0mm pitch plugged up.

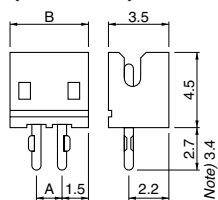
As for this housing, only circuit No.1 is marked.

2. ZHR-6(3.0) is not UL/CSA approved.

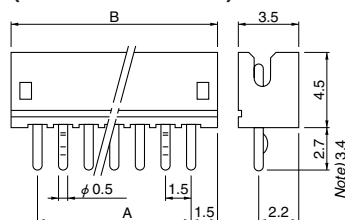
## Through-hole type shrouded header

### Top entry type

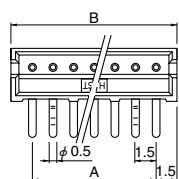
#### (2 circuits)



#### (3 circuits or more)



### Side entry type



| Circuits | Model No.      |                 |                      |                       | Dimensions (mm) |      | Q'ty / box     |                 |                     |
|----------|----------------|-----------------|----------------------|-----------------------|-----------------|------|----------------|-----------------|---------------------|
|          | Top entry type | Side entry type | Note) Top entry type | Note) Side entry type | A               | B    | Top entry type | Side entry type | Side entry type-3.4 |
| 2        | <b>B2B-ZR</b>  | <b>S2B-ZR</b>   | <b>B2B-ZR-3.4</b>    | <b>S2B-ZR-3.4</b>     | 1.5             | 4.5  | 2,000          | 2,000           | 2,000               |
| 3        | <b>B3B-ZR</b>  | <b>S3B-ZR</b>   | <b>B3B-ZR-3.4</b>    | <b>S3B-ZR-3.4</b>     | 3.0             | 6.0  | 2,000          | 2,000           | 1,000               |
| 4        | <b>B4B-ZR</b>  | <b>S4B-ZR</b>   | <b>B4B-ZR-3.4</b>    | <b>S4B-ZR-3.4</b>     | 4.5             | 7.5  | 2,000          | 2,000           | 2,000               |
| 5        | <b>B5B-ZR</b>  | <b>S5B-ZR</b>   | <b>B5B-ZR-3.4</b>    | <b>S5B-ZR-3.4</b>     | 6.0             | 9.0  | 2,000          | 1,000           | 1,000               |
| 6        | <b>B6B-ZR</b>  | <b>S6B-ZR</b>   | <b>B6B-ZR-3.4</b>    | <b>S6B-ZR-3.4</b>     | 7.5             | 10.5 | 2,000          | 1,000           | 1,000               |
| 7        | <b>B7B-ZR</b>  | <b>S7B-ZR</b>   | <b>B7B-ZR-3.4</b>    | <b>S7B-ZR-3.4</b>     | 9.0             | 12.0 | 1,000          | 1,000           | 1,000               |
| 8        | <b>B8B-ZR</b>  | <b>S8B-ZR</b>   | <b>B8B-ZR-3.4</b>    | <b>S8B-ZR-3.4</b>     | 10.5            | 13.5 | 1,000          | 1,000           | 1,000               |
| 9        | <b>B9B-ZR</b>  | <b>S9B-ZR</b>   | <b>B9B-ZR-3.4</b>    | <b>S9B-ZR-3.4</b>     | 12.0            | 15.0 | 1,000          | 1,000           | 1,000               |
| 10       | <b>B10B-ZR</b> | <b>S10B-ZR</b>  | <b>B10B-ZR-3.4</b>   | <b>S10B-ZR-3.4</b>    | 13.5            | 16.5 | 1,000          | 1,000           | 1,000               |
| 11       | <b>B11B-ZR</b> | <b>S11B-ZR</b>  | <b>B11B-ZR-3.4</b>   | <b>S11B-ZR-3.4</b>    | 15.0            | 18.0 | 1,000          | 500             | 500                 |
| 12       | <b>B12B-ZR</b> | <b>S12B-ZR</b>  | <b>B12B-ZR-3.4</b>   | <b>S12B-ZR-3.4</b>    | 16.5            | 19.5 | 1,000          | 500             | 500                 |
| 13       | <b>B13B-ZR</b> | <b>S13B-ZR</b>  | <b>B13B-ZR-3.4</b>   | <b>S13B-ZR-3.4</b>    | 18.0            | 21.0 | 500            | 500             | 500                 |

### Material and Finish

Pin: Brass, copper-undercoated, tin-plated (reflow treatment)

Wafer: Glass-filled PA 66, UL94V-0, natural (ivory)

### RoHS compliance

This product displays (LF)(SN) on a label.

Note: Headers with 3.4mm long solder tails, suited for the 1.6mm thick PC board.

<For reference> As the color identification, the following alphabet shall be put in the underlined part.

For availability, delivery and minimum order quantity, contact JST.

ex. **B2B-ZR-3.4-oo**

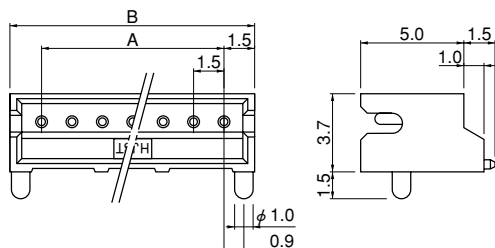
(blank)...natural (ivory)

K...black R...red E...blue M...green

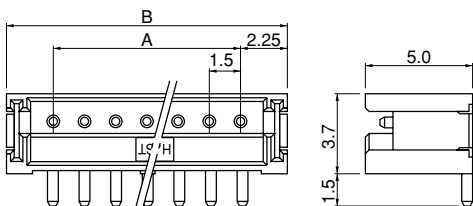
# ZH CONNECTOR

## SMT type shrouded header

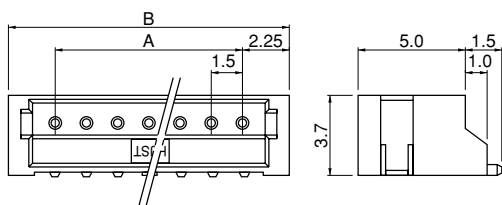
### SM2 type Side entry type



### SM4 type (with solder tabs) Top entry type



### Side entry type



### SM2 type

| Circuits | Model No.             | Dimensions (mm) |      | Q'ty / reel |
|----------|-----------------------|-----------------|------|-------------|
|          | Side entry type       | A               | B    |             |
| 2        | <b>S2B-ZR-SM2-TF</b>  | 1.5             | 4.5  | 1,000       |
| 3        | <b>S3B-ZR-SM2-TF</b>  | 3.0             | 6.0  | 1,000       |
| 4        | <b>S4B-ZR-SM2-TF</b>  | 4.5             | 7.5  | 1,000       |
| 5        | <b>S5B-ZR-SM2-TF</b>  | 6.0             | 9.0  | 1,000       |
| 6        | <b>S6B-ZR-SM2-TF</b>  | 7.5             | 10.5 | 1,000       |
| 7        | <b>S7B-ZR-SM2-TF</b>  | 9.0             | 12.0 | 1,000       |
| 8        | <b>S8B-ZR-SM2-TF</b>  | 10.5            | 13.5 | 1,000       |
| 9        | <b>S9B-ZR-SM2-TF</b>  | 12.0            | 15.0 | 1,000       |
| 10       | <b>S10B-ZR-SM2-TF</b> | 13.5            | 16.5 | 1,000       |
| 11       | <b>S11B-ZR-SM2-TF</b> | 15.0            | 18.0 | 1,000       |
| 12       | <b>S12B-ZR-SM2-TF</b> | 16.5            | 19.5 | 1,000       |
| 13       | <b>S13B-ZR-SM2-TF</b> | 18.0            | 21.0 | 1,000       |

#### Material and Finish

Pin: Brass, copper-undercoated, tin-plated (reflow treatment)  
Wafer: Glass-filled PA 46, UL94V-0, natural (ivory)

**RoHS compliance** This product displays (LF)(SN) on a label.

### SM4 type

| Circuits | Model No.             |                        | Dimensions (mm) |      | Q'ty / reel    |                 |
|----------|-----------------------|------------------------|-----------------|------|----------------|-----------------|
|          | Top entry type        | Side entry type        | A               | B    | Top entry type | Side entry type |
| 2        | <b>B2B-ZR-SM4-TF</b>  | <b>S2B-ZR-SM4A-TF</b>  | 1.5             | 6.0  | 1,000          | 1,000           |
| 3        | <b>B3B-ZR-SM4-TF</b>  | <b>S3B-ZR-SM4A-TF</b>  | 3.0             | 7.5  | 1,000          | 1,000           |
| 4        | <b>B4B-ZR-SM4-TF</b>  | <b>S4B-ZR-SM4A-TF</b>  | 4.5             | 9.0  | 1,000          | 1,000           |
| 5        | <b>B5B-ZR-SM4-TF</b>  | <b>S5B-ZR-SM4A-TF</b>  | 6.0             | 10.5 | 1,000          | 1,000           |
| 6        | <b>B6B-ZR-SM4-TF</b>  | <b>S6B-ZR-SM4A-TF</b>  | 7.5             | 12.0 | 1,000          | 1,000           |
| 7        | <b>B7B-ZR-SM4-TF</b>  | <b>S7B-ZR-SM4A-TF</b>  | 9.0             | 13.5 | 1,000          | 1,000           |
| 8        | <b>B8B-ZR-SM4-TF</b>  | <b>S8B-ZR-SM4A-TF</b>  | 10.5            | 15.0 | 1,000          | 1,000           |
| 9        | <b>B9B-ZR-SM4-TF</b>  | <b>S9B-ZR-SM4A-TF</b>  | 12.0            | 16.5 | 1,000          | 1,000           |
| 10       | <b>B10B-ZR-SM4-TF</b> | <b>S10B-ZR-SM4A-TF</b> | 13.5            | 18.0 | 1,000          | 1,000           |
| 11       | <b>B11B-ZR-SM4-TF</b> | <b>S11B-ZR-SM4A-TF</b> | 15.0            | 19.5 | 1,000          | 1,000           |
| 12       | <b>B12B-ZR-SM4-TF</b> | <b>S12B-ZR-SM4A-TF</b> | 16.5            | 21.0 | 1,000          | 1,000           |
| 13       | <b>B13B-ZR-SM4-TF</b> | <b>S13B-ZR-SM4A-TF</b> | 18.0            | 22.5 | 1,000          | 1,000           |

#### Material and Finish

Pin: Brass, copper-undercoated, tin-plated (reflow treatment)  
Wafer: PA 6T, UL94V-0, natural (ivory)  
Solder tab: Brass, copper-undercoated, tin-plated (reflow treatment)

**RoHS compliance** This product displays (LF)(SN) on a label.

Note: 1. PA 9T is used for some colored products.

2. The products listed above are supplied on embossed-tape.

3. Contact JST for the top entry type headers with suction cap.

<For reference> As the color identification, the following alphabet shall be put in the underlined part. For availability, delivery and minimum order quantity, contact JST.

ex. **S2B-ZR-SM4A-oo-TF**

(blank)...natural (ivory)

K...black R...red E...blue M...green L...lemon yellow  
LE...light blue DO...dark orange DH...dark gray