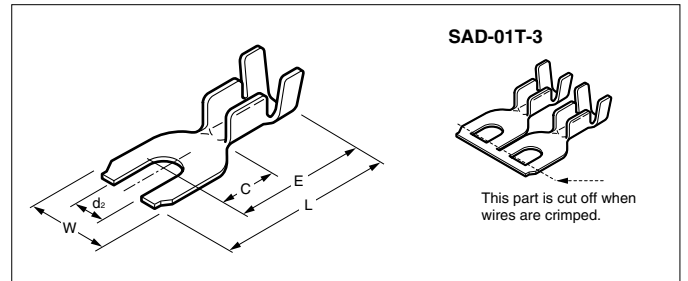


FORK TONGUE TERMINAL

With insulation grip



UL LISTED E42024

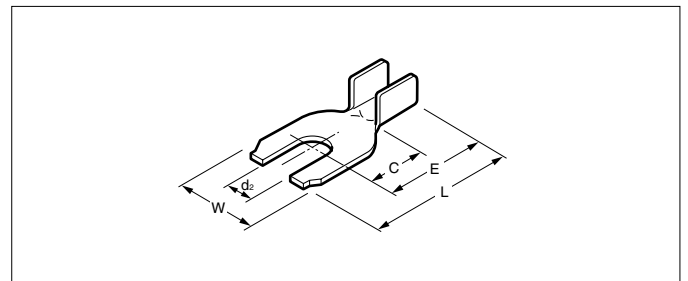
SF Certified LR20812

Model No.	Standard	Applicable wire			Material	Finish	Dimensions(mm)						Q'ty / reel	
		mm ²	AWG #	Insulation O.D. (mm)			d ₂ (dia.)	E	L	C	W	Material thickness		
SAA-51-3	UL LISTED SF	0.5 to 2.0	20 to 14	2.6 to 3.8	Brass	—	3.2	13.0	16.8	5.8	7.2	0.5	7,500	
SAA-51T-3						Tin-plated								
SAA-51-3.7						—	3.7							
SAA-51T-3.7						Tin-plated								
SAA-51-4						—	4.3							
SAA-51T-4						Tin-plated								
SAB-51-5						—	5.3							8.2
SAB-51T-5						Tin-plated								
*SAD-01T-3	UL LISTED SF	0.2 to 0.5	24 to 20	Approx 2.0	—	3.2	11.0	14.7	5.2	6.3	—	5,000		

RoHS compliance SAD-01T-3 displays (SN) on a label.

Note: The terminal denoted by * is a twin lead fork terminal and is used for crimping 2 piece terminals simultaneously onto 2 parallel wires like the TV feeder wires.

Without insulation grip



UL LISTED E42024

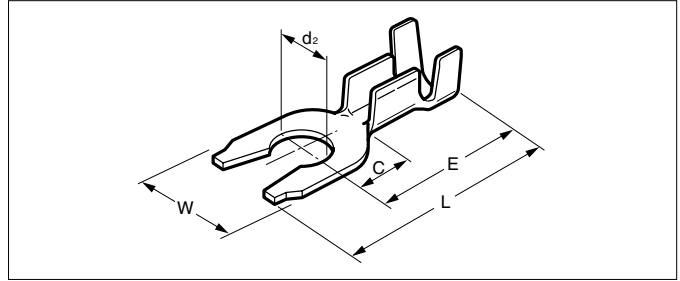
SF Certified LR20812

Model No.	Standard	Applicable wire			Material	Finish	Dimensions(mm)						Q'ty / reel
		mm ²	AWG #	Insulation O.D. (mm)			d ₂ (dia.)	E	L	C	W	Material thickness	
SAA-50-3	UL LISTED SF	0.5 to 2.0	20 to 14	—	Brass	—	3.2	10.0	13.8	6.0	7.2	0.5	10,000
SAA-50T-3						Tin-plated							
SAA-50-3.7						—	3.7						
SAA-50T-3.7						Tin-plated							
SAA-50-4						—	4.3						
SAA-50T-4						Tin-plated							

RoHS compliance

FORK TONGUE TERMINAL

Locking type (With insulation grip)



UL Listed E42024

CS Certified LR20812

Model No.	Standard	Applicable wire			Material	Finish	Dimensions(mm)					Q'ty / reel	
		mm ²	AWG #	Insulation O.D. (mm)			d ₂ (dia.)	E	L	C	W		Material thickness
SAA-21-3L	UL LISTED CS	0.3 to 0.75	22 to 18	1.5 to 2.8	Brass	—	3.2	13.0	16.8	5.8	7.2	0.5	7,500
SAA-21T-3L						Tin-plated							
SAA-21-3.5L						—	3.7						
SAA-21T-3.5L						Tin-plated							
SAA-21-4L						—	4.3						
SAA-21T-4L						Tin-plated							

RoHS compliance

Crimping machine, Applicator

Contact	Crimping machine	Applicator		
		Crimp applicator	Dies	Crimp applicator with dies
SAA-21(T)-**	AP-K2N	MK-L	MK/SAA-21	APLMK SAA21
		—	—	—
SAA-50(T)-**		MK-L	MK/SAA-50	APLMK SAA50
		—	—	—
SAA-51(T)-**		MK-L	MK/SAA-51	APLMK SAA51
		—	—	—

Contact	Crimping machine	Applicator		
		Crimp applicator	Dies	Crimp applicator with dies
SAB-51(T)-**	AP-K2N	MK-L	MK/SAB-51	APLMK SAB51
		—	—	—
SAD-01(T)-**		MK-L	MK/SAD-01	APLMK SAD01
		—	—	—

* Compliant with RoHS.

* Refer to "General Instruction and Notice when using Terminals and Connectors" at the end of this catalog.

* Contact JST for details.