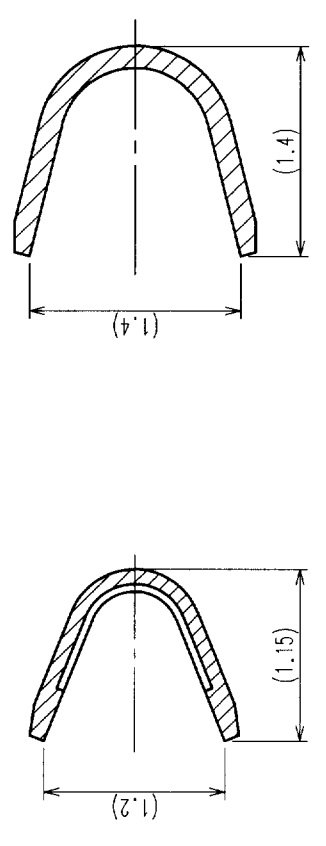
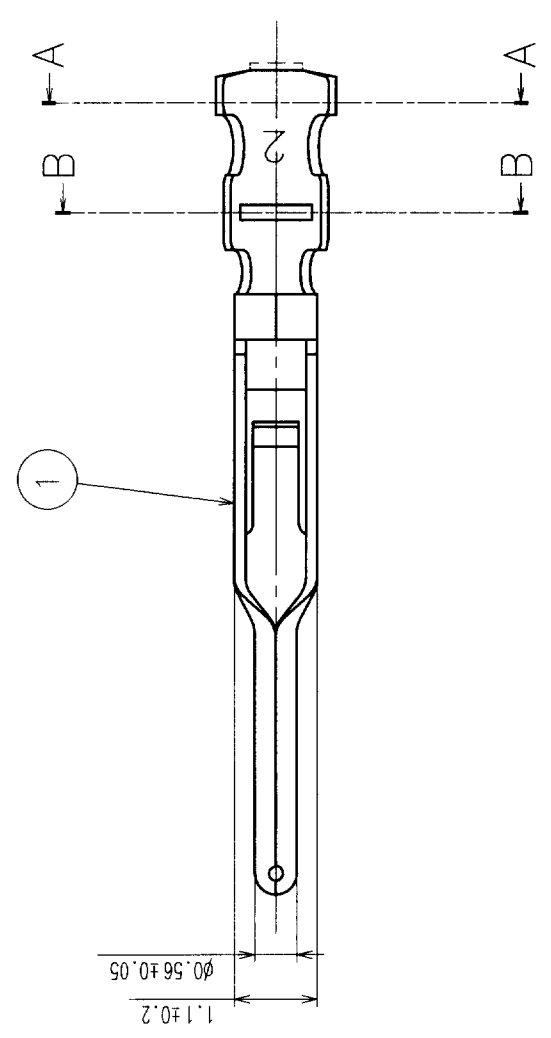


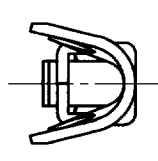
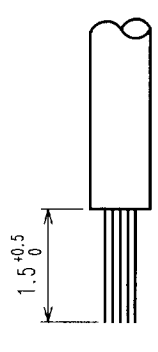
Jun. 1. 2019 Copyright 2019 HIROSE ELECTRIC CO., LTD. All Rights Reserved.
 In case of consideration for using Automotive equipment / device which demand high reliability, kindly contact our sales window correspondents.

COUNT	DESCRIPTION OF REVISIONS	BY	CHKD	DATE	COUNT	DESCRIPTION OF REVISIONS	BY	CHKD	DATE
△				..	△				..
△				..	△				..
△				..	△				..

B-B(20:1) A-A(20:1)



3 FIG.1 RECOMMENDED CABLE PREPARATION DIMENSIONS



HRS DRAWING FOR REFERENCE

- NOTES
- 1 THIS PRODUCT IS APPLY TO THE WIRE 26-30 AWG(WIRE JACKET DIAMETER ϕ 1 MAX).
 - 2 APPLICABLE OPERATION CRIMP TOOL: HT102/HR30-1
 - 3 RECOMMENDED CABLE PREPARATION DIMENSIONS ARE SHOWN IN FIG.1.
 - 4 PER PACK: 100 CONTACTS

NO.	PHOSPHOR BRONZE MATERIAL	SELECTIVE GOLD PLATING FINISH, REMARKS	NO.	MATERIAL	FINISH, REMARKS	FINISH, REMARKS
1						
CODE NO. (OLD)		DRAWN		DESIGNED	CHECKED	APPROVED
		H.Zemba		H.Zemba	E. Kumi	M. Yoshida
		01.01.05		01.01.05	01.01.05	01.01.10
DRAWING NO.		PART NO.		FINISH, REMARKS		
EDC3-112589		HR30-PC-111				
SCALE		CODE NO.		FINISH, REMARKS		
10 : 1		CL130-0022-3				
UNITS		DRAWING NO.		FINISH, REMARKS		
mm		EDC3-112589				
		HIROSE ELECTRIC CO., LTD				
		HRS				

TO	
R	