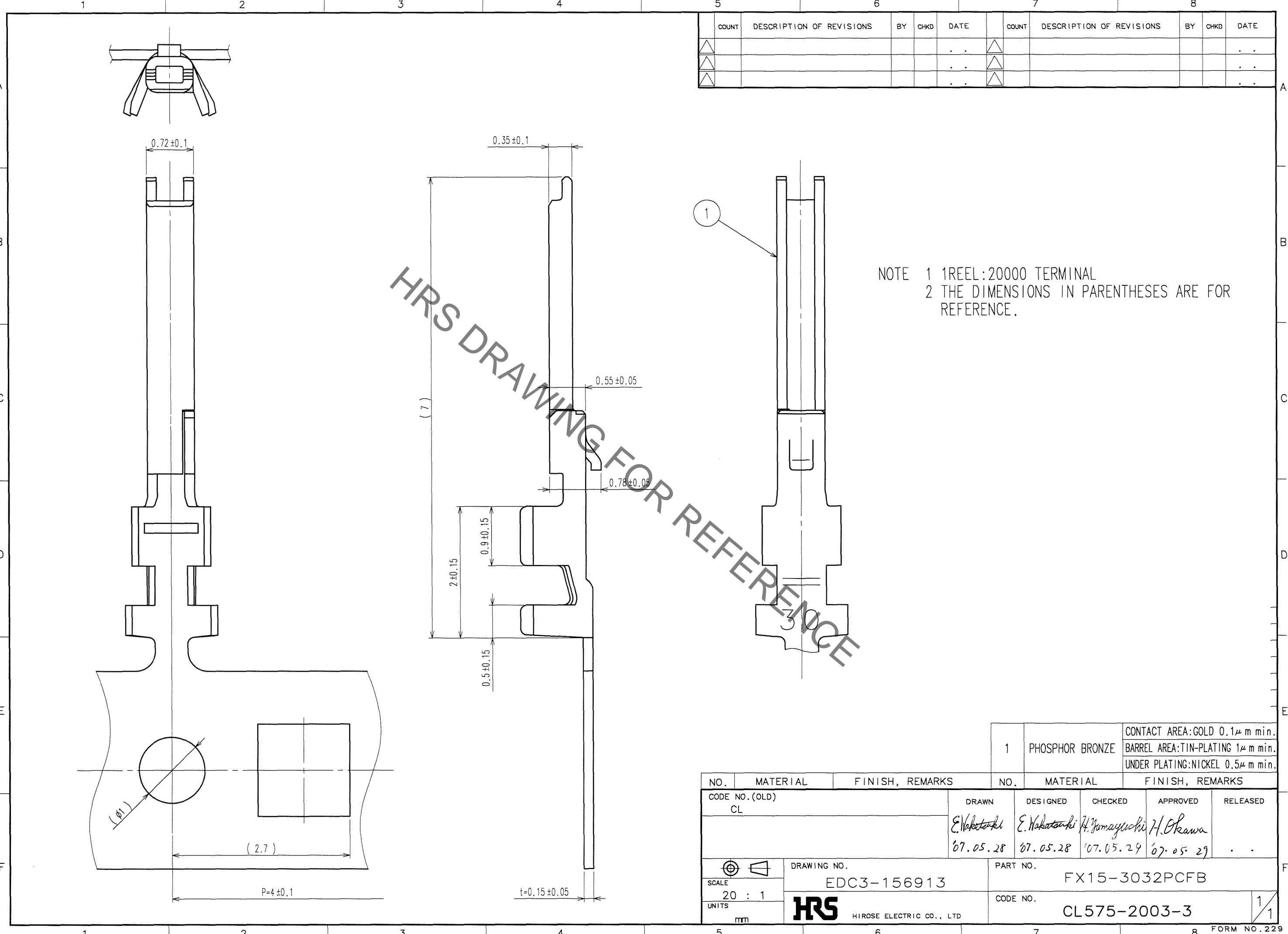


May.1.2019 Copyright 2019 HIROSE ELECTRIC CO., LTD. All Rights Reserved.
In case of consideration for using Automotive equipment / device which demand high reliability, kindly contact our sales window correspondents.



COUNT	DESCRIPTION OF REVISIONS	BY	CHKD	DATE	COUNT	DESCRIPTION OF REVISIONS	BY	CHKD	DATE
△				..	△				..
△				..	△				..
△				..	△				..

HRS DRAWING FOR REFERENCE

NOTE 1 1REEL:20000 TERMINAL
2 THE DIMENSIONS IN PARENTHESES ARE FOR REFERENCE.

TO

1		PHOSPHOR BRONZE		CONTACT AREA:GOLD 0.1μ m min. BARREL AREA:TIN-PLATING 1μ m min. UNDER PLATING:NICKEL 0.5μ m min.	
NO.	MATERIAL	FINISH, REMARKS	NO.	MATERIAL	FINISH, REMARKS
CODE NO. (OLD) CL			DRAWN <i>E. Nakatsuki</i> 07.05.28	DESIGNED <i>E. Nakatsuki</i> 07.05.28	CHECKED <i>H. Yamayoshi</i> 07.05.29
			APPROVED <i>H. Okawa</i> 07.05.29	RELEASED ..	
DRAWING NO. EDC3-156913			PART NO. FX15-3032PCFB		
UNITS mm			CODE NO. CL575-2003-3		1/1