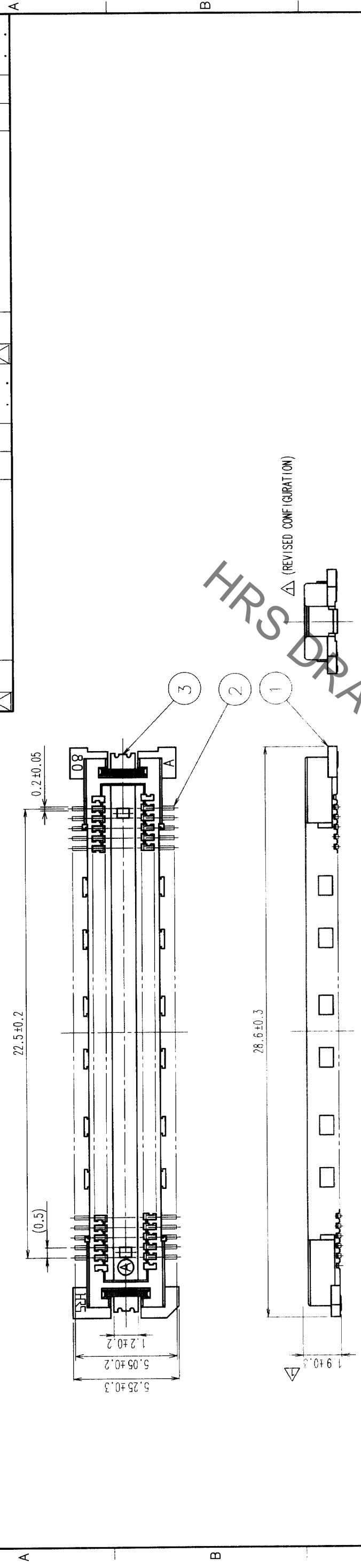
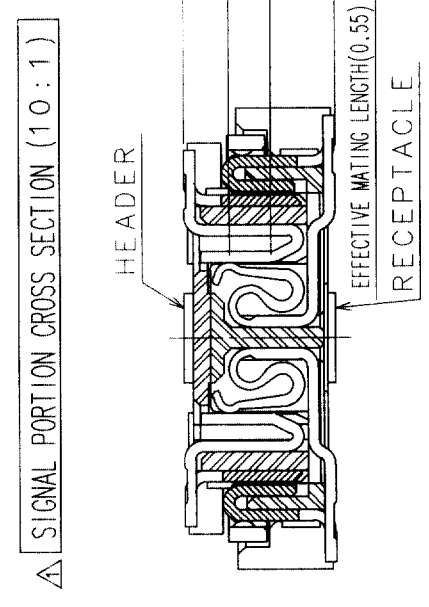
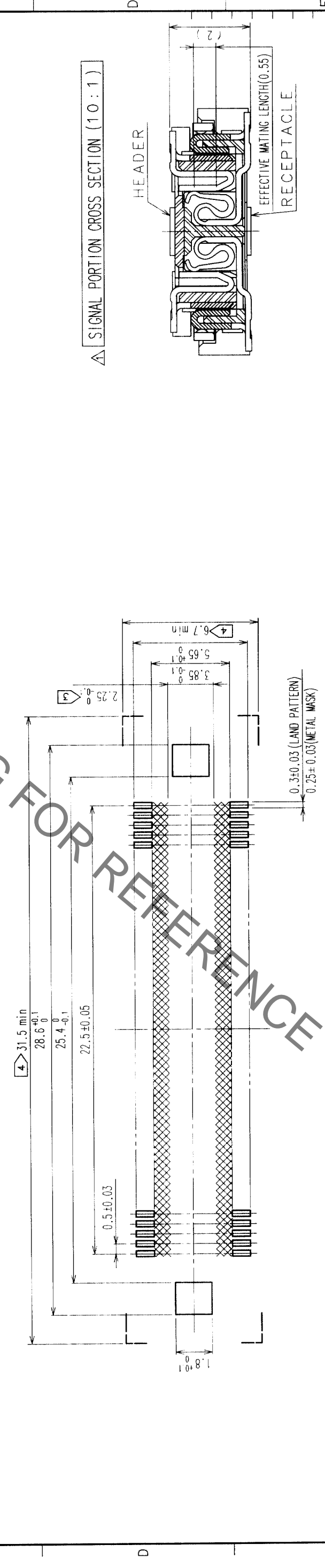


COUNT	DESCRIPTION OF REVISIONS	BY	CHKD	DATE	COUNT	DESCRIPTION OF REVISIONS	BY	CHKD	DATE
3	RE-F-06522	J.M	J.L	99.9.7					



RECOMMENDED LAND PATTERN DIMENSION OF PCB



- NOTES
- SMT LEAD-COPLANARITY: 0.1 MAX.
 - THIS PRODUCT HAS NO POLARITY TO PATTERN FOR MOUNTING.
 ☞ MAKE SURE WIDTH OF PATTERN IS WITHIN THAT OF LAND, OR LEAD MAY TOUCH PATTERN. (THIS APPLIES TO HATCHED AREA.)
 ☞ DO NOT MOUNT OTHER DEVICES ONTO □ AREA, OR MATING PAIR CANNOT BE MATED.

2	COPPER ALLOY	CONTACT AREA: GOLD (0.1µm) OVER NICKEL
1	LCP	LEAD: GOLD FLASH OVER NICKEL
NO.	MATERIAL	FINISH, REMARKS
3	PHOSPHOR BRONZE	TIN PLATED
CODE NO. (OLD)	CL	
DRAWN	DESIGNED	CHECKED
S.Kitajima	J.Matsukawa	M.Ishida
990525	990525	990526
990526	990526	990526
APPROVED	APPROVED	RELEASED
Y.Yoshimura	Y.Yoshimura	
990526	990526	990526

DRAWING NO.	EDC3-152105	PART NO.	FX11LB-92P-SV
SCALE	5 : 1	CODE NO.	CL573-0053-8
UNITS	mm		

TO	
PCK	