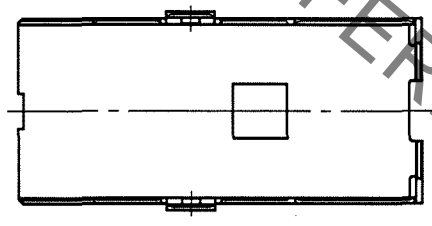
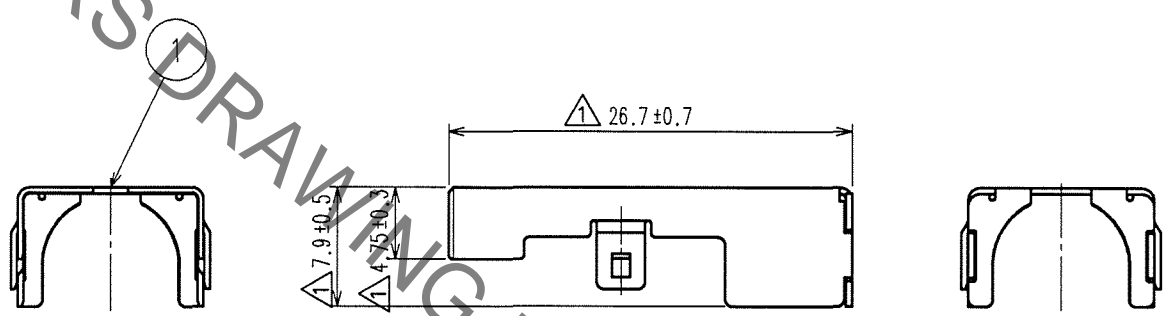
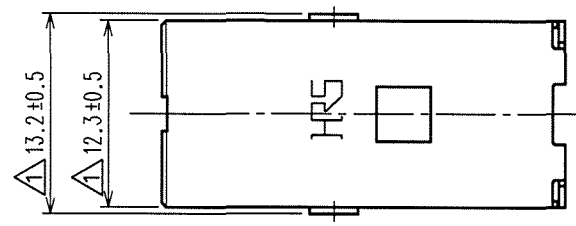


May.1.2019 Copyright 2019 HIROSE ELECTRIC CO., LTD. All Rights Reserved.
In case of consideration for using Automotive equipment / device which demand high reliability, kindly contact our sales window correspondents.

1	2	3	4						
COUNT	DESCRIPTION OF REVISIONS	BY	CHKD	DATE	COUNT	DESCRIPTION OF REVISIONS	BY	CHKD	DATE
△ 6	DIS-T-000626	T.K	N.N	'07.12.29	△				. .
△				. .	△				. .
△				. .	△				. .

△ ELV. RoHS COMPLIANT



NOTE1. APPLICABLE CABLE DIA : ϕ 7.5 TO ϕ 8.0

1	COPPER ALLOY	TIN PLATED T=0.4
NO.	MATERIAL	FINISH, REMARKS

CODE NO. (OLD)	DRAWN	DESIGNED	CHECKED	APPROVED	RELEASED
	T. SHISHIKURA	T. SHISHIKURA	N. NAKATA	K. SATO	
	' 01.3.13	' 01.3.13	' 01.3.16	' 01.3.16	

TO
AMC

SACLE 2 : 1 UNITS mm	DRAWING NO. EDC4-165728	PART NO. GT17VS-10DS-SC
	HRS HIROSE ELECTRIC CO., LTD.	CODE NO. CL767-0060-8

