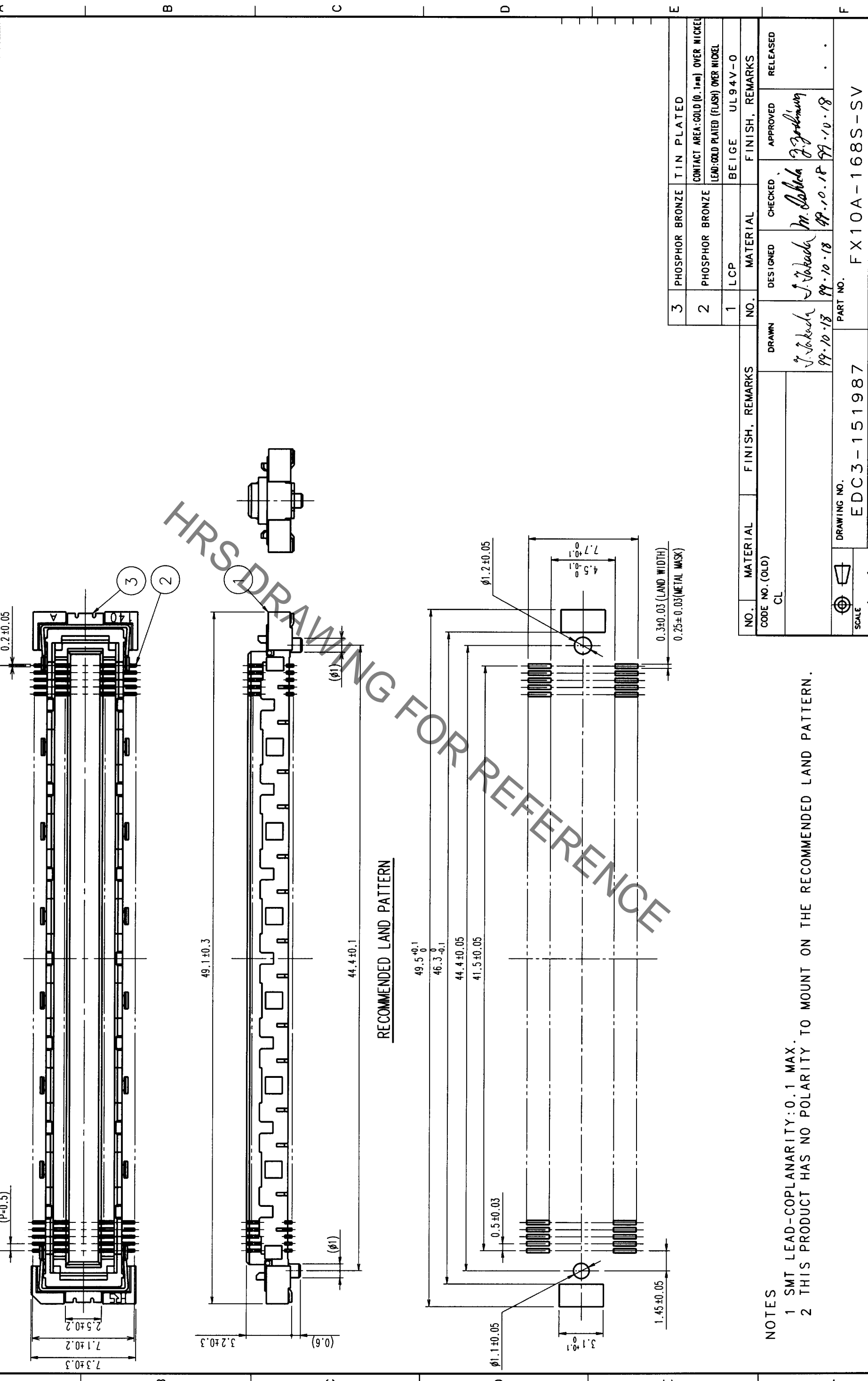


In case of consideration for usig Automotive equipment / device which demand high reliability, kindly contact our sales wing correspondents.

Sep.1.2019 Copyright 2019 HIROSE ELECTRIC CO., LTD. All Rights Reserved.

COUNT		DESCRIPTION OF REVISIONS		BY	CHKD	DATE	COUNT		DESCRIPTION OF REVISIONS		BY	CHKD	DATE
△	△						△	△					
△	△						△	△					
△	△						△	△					



NO.	PHOSPHOR BRONZE	TIN PLATED
3	PHOSPHOR BRONZE	TIN PLATED
2	PHOSPHOR BRONZE	CONTACT AREA: GOLD (0.1μm) OVER NICKEL LEAD: GOLD PLATED (FLASH) OVER NICKEL
1	LCP	BEIGE UL94V-0

NO.	MATERIAL	FINISH, REMARKS
CL	CL	

NO.	MATERIAL	FINISH, REMARKS	DESIGNED	CHECKED	APPROVED	RELEASED
1	LCP	BEIGE UL94V-0	J. Takada	M. Sakabe	M. Sakabe	
2	PHOSPHOR BRONZE	CONTACT AREA: GOLD (0.1μm) OVER NICKEL LEAD: GOLD PLATED (FLASH) OVER NICKEL	J. Takada	M. Sakabe	M. Sakabe	
3	PHOSPHOR BRONZE	TIN PLATED	J. Takada	M. Sakabe	M. Sakabe	

NOTES
 1 SMT LEAD-COPLANARITY: 0.1 MAX.
 2 THIS PRODUCT HAS NO POLARITY TO MOUNT ON THE RECOMMENDED LAND PATTERN.

TO	
PCK	

DRAWING NO.	EDC3-151987	PART NO.	FX10A-168S-SV
SCALE	4 : 1	CODE NO.	CL570-0244-7
UNITS	mm		