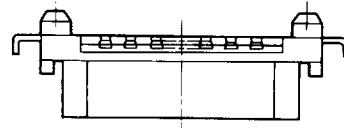
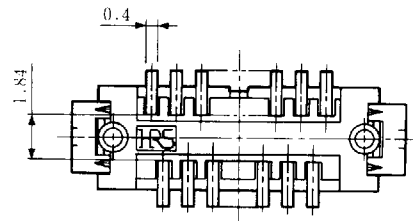
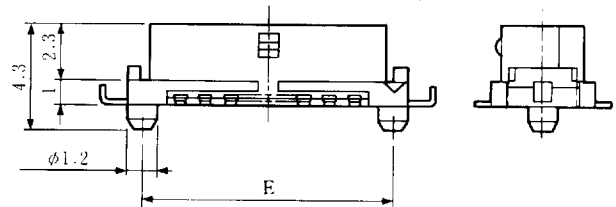
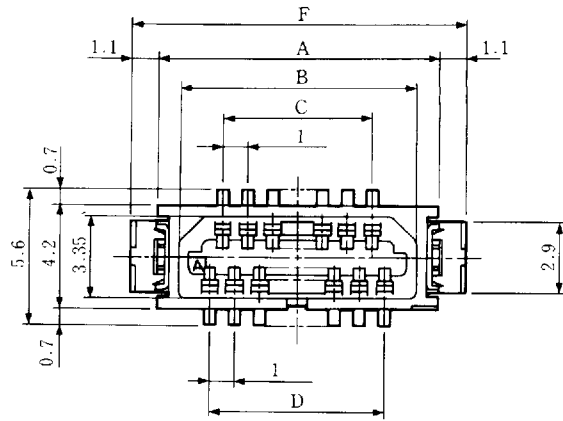
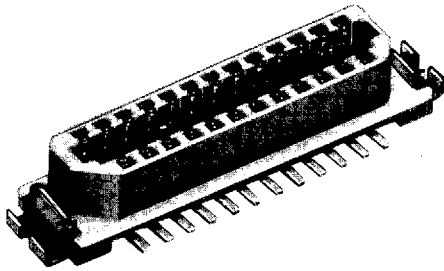


■ RECEPTACLE WITH REINFORCE-HARDWARE

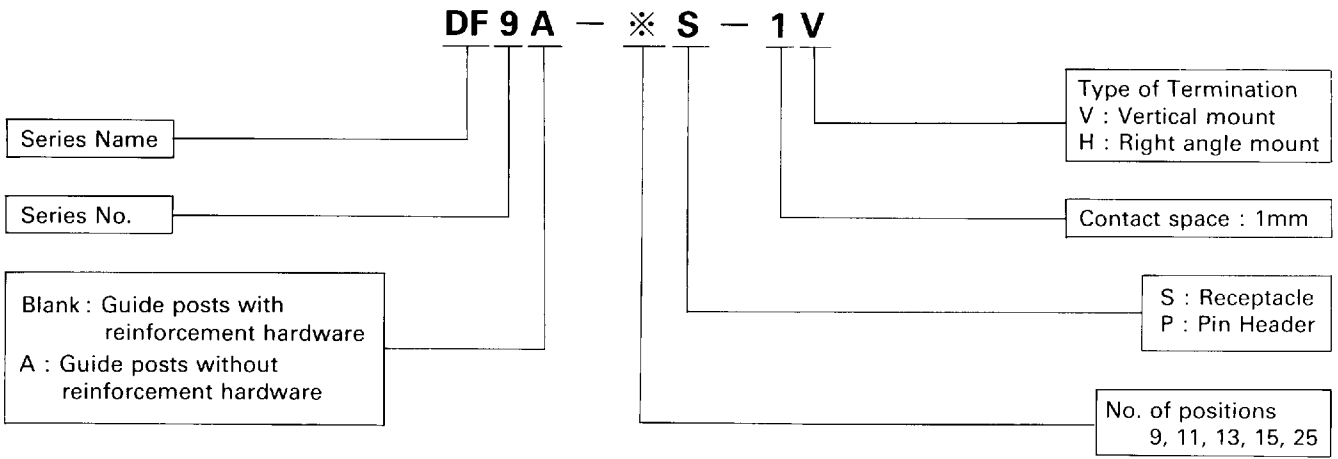


Unit: mm

HRS No.	Part No.	No. of Pin	A	B	C	D	E	F
CL540-0054-0	DF9-9S-1V	9	8.3	6.5	3.0	4.0	7.1	10.5
CL540-0055-2	DF9-11S-1V	11	9.3	7.5	4.0	5.0	8.1	11.5
CL540-0056-5	DF9-13S-1V	13	10.3	8.5	5.0	6.0	9.1	12.5
CL540-0057-8	DF9-15S-1V	15	11.3	9.5	6.0	7.0	10.1	13.5
CL540-0058-0	DF9-17S-1V	17	12.3	10.5	7.0	8.0	11.1	14.5
CL540-0059-3	DF9-19S-1V	19	13.3	11.5	8.0	9.0	12.1	15.5
CL540-0060-2	DF9-21S-1V	21	14.3	12.5	9.0	10.0	13.1	16.5
CL540-0061-5	DF9-23S-1V	23	15.3	13.5	10.0	11.0	14.1	17.5
CL540-0062-8	DF9-25S-1V	25	16.3	14.5	11.0	12.0	15.1	18.5

■ ORDERING FORMAT

● RECEPTACLE / PIN HEADER



■ ELECTRICAL

Item	Specification
Current rating	0.1A
Voltage rating	150VAC
Insulation resistance	More than 500 mega-ohms at 100 VDC
Contact resistance	Less than 50 mm-ohms at 0.1A DC

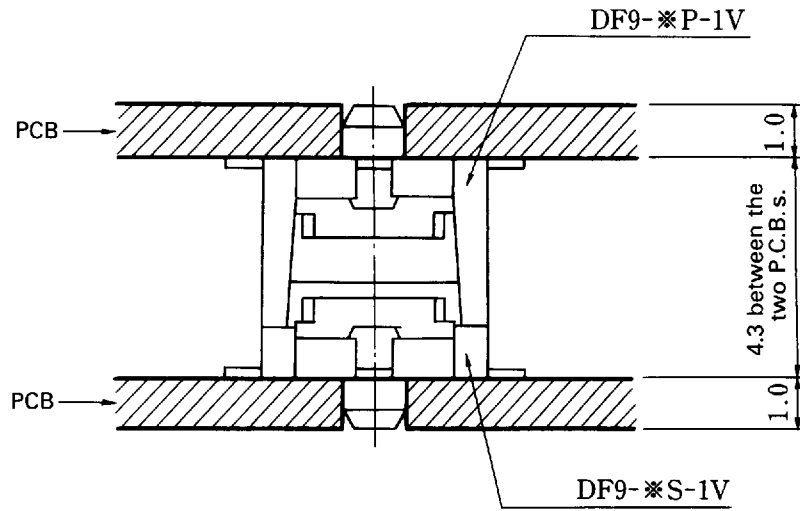
■ TEMPERATURE RATING

245 to 260 degrees centigrade for more than 10 seconds. Rated for V.P.S., IR, and Heat blow soldering methods.

■ MATERIAL

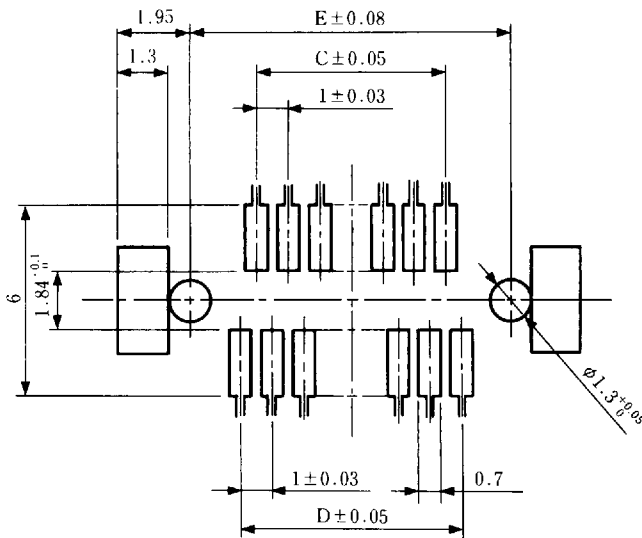
Item	Specification
Insulator	Poly-amide (UL94V-O)
Contact	Phosphor Bronze, Tin / Lead or Gold plating
Hardware	Brass, Tin plated

■ VIEW AT MATING



■ DIMENSIONAL SPEC OF P.C.B.

● DF9



● DF9A

