

Insulation Housings

250 Series

Model Allocation Number

CS-63 N 0 02

Series Code

28 110 Series
48 187 Series
50 197 Series
63 250 Series
ISO .. ISO Series
LK Lok Series
SEK .. Self Locking Series
TP Low Insertion Series

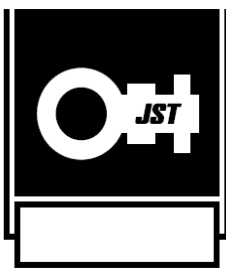
Material Code

N Polyamide
F Polyethylene
S Polycarbonate V0
B Polycarbonate V2
PBT .. Polybutylene Terephthalate

Sub Series

Colour Code

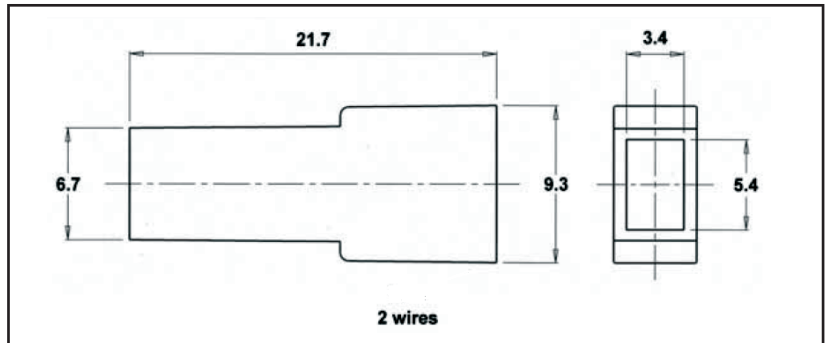
0 Natural
1 White
2 Yellow
3 Red
4 Green
5 Black
6 Blue
VI Violet
MR ... Brown



250 SERIES

Insulation housings for terminals

01 Type (Straight) Housing <Made in Europe>



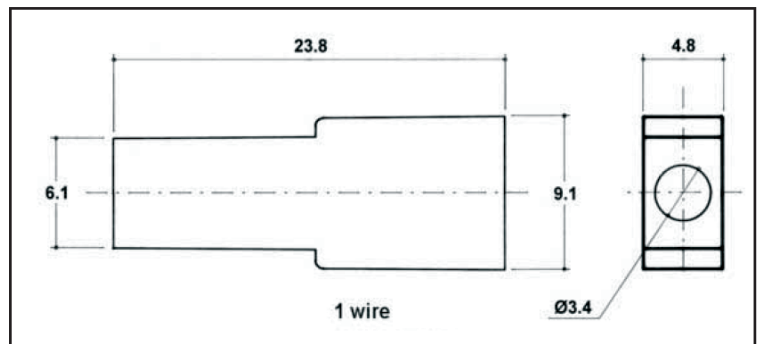
File No. E172855

Part No	Standard	Description	Material	Max Operating Temp °C	Applicable JST Terminal
CS-63F001		Single Circuit Housing	PE (UL94-HB)	50	STO-(*)-250(*)-(*)-(*)-(*)
CS-63N001			Nylon 66 (UL94-V2)	130	
CS-63N001V0			Nylon 68 (UL94-V0)	140	

Note:

- 1) Colour coding: 0=Natural, 1=White, 2=Yellow, 3=Red, 4=Green, 5=Black, 6=Blue Example CS-63N501 = Black Housing.
- 2) Example applicable JST Terminal; STO-1.0T-250N
- 3) Parts are available in different materials: Contact JST.
- 4) For availability, delivery and minimum order quantity details, contact JST.

02 Type (Straight) Housing <Made in Europe>



File No. E172855

Part No	Standard	Description	Material	Max Operating Temp °C	Applicable JST Terminal
CS-63F002		Single Circuit Housing	PE (UL94-HB)	50	STO-(*)-250(*)-(*)-(*)-(*)
CS-63N002			Nylon 66 (UL94-V2)	130	
CS-63N002V0			Nylon 68 (UL94-V0)	140	

Note:

- 1) Colour coding: 0=Natural, 2=Yellow, 3=Red, 4=Green, 5=Black. Example CS-63N502 = Black Housing.
- 2) Example applicable JST Terminal; STO-1.0T-250N
- 3) Parts are available in different materials: Contact JST.
- 4) For availability, delivery and minimum order quantity details, contact JST.