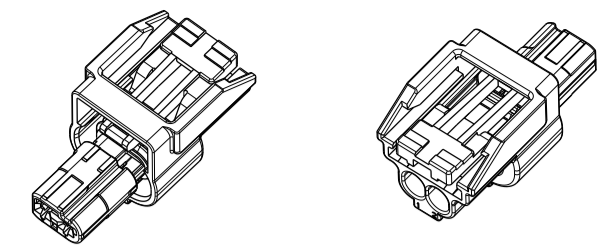
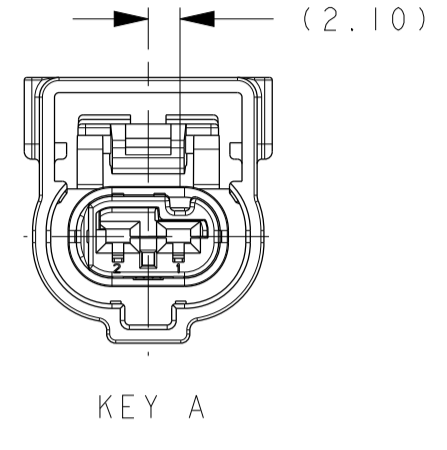


ASSEMBLY NUMBER	PCL	KEY OPTION	COLOR	COMPONENTS			
				INSULATOR (HOUSING)	TPA (BLUE)	RING SEAL (GREEN)	CPA (RED) (OPTIONAL)
				ITEM 1	ITEM 2	ITEM 3	ITEM 4
				PA66 GF35	PA66 GF35	SILICONE	PA66 GF35
F495100		A	BLACK	S106100	S506100	C895100	F752210
F595100		B	LT GRAY	S206100	S606100		
F695100		C	DK GRAY	S306100	S706100		
F460400		A	BLACK	S106100	S506100		
F560400		B	LT GRAY	S206100	S606100		
F660400		C	DK GRAY	S306100	S706100		

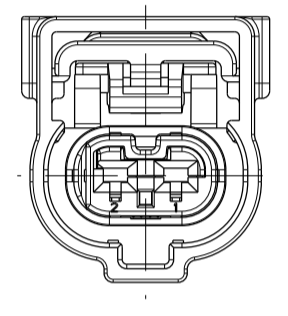
APPLICABLE COMPONENTS								
ITEM NO.	ITEM DESCRIPTION	PLATING OR COLOR	SUPPLIER	SUPPLIER COMP PART NUMBER	GRIP CODE	WIRE SIZE	INSULATION DIAMETER RANGE	MATERIAL/SPEC NO
5	1.20 SYSTEM TERMINAL	TIN	FCI	54001864	18	18-16 AWG 0.75-1.25mm ²	1.70mm-2.41mm	COPPER ALLOY / NA
	1.20 SYSTEM TERMINAL	TIN	FCI	54002006	20	22-20 AWG 0.35-0.50mm ²	1.20mm-1.90mm	COPPER ALLOY / NA
	1.20 SYSTEM TERMINAL	TIN/SILVER	FCI	54001866	18	18-16 AWG 0.75-1.25mm ²	1.70mm-2.41mm	COPPER ALLOY / NA
	1.20 SYSTEM TERMINAL	TIN/SILVER	FCI	54002007	20	22-20 AWG 0.35-0.50mm ²	1.20mm-1.90mm	COPPER ALLOY / NA
	1.20 SYSTEM TERMINAL	SILVER	FCI	F731400	18	18-16 AWG 0.75-1.25mm ²	1.70mm-2.41mm	COPPER ALLOY / NA
	1.20 SYSTEM TERMINAL	SILVER	FCI	F931400	20	22-20 AWG 0.35-0.50mm ²	1.20mm-1.90mm	COPPER ALLOY / NA
	1.20 SYSTEM TERMINAL	GOLD	FCI	54001863	18	18-16 AWG 0.75-1.25mm ²	1.70mm-2.41mm	COPPER ALLOY / NA
	1.20 SYSTEM TERMINAL	GOLD	FCI	54002005	20	22-20 AWG 0.35-0.50mm ²	1.20mm-1.90mm	COPPER ALLOY / NA
	6	1.20 SYSTEM CABLE SEAL ROUND	RUST RED	FCI (QSR)	C528010 (A-0419)	-	16/18 AWG 1.00-1.25mm ²	1.90mm-2.41mm
1.20 SYSTEM CABLE SEAL ROUND		BLUE	FCI (QSR)	54200391 (A-0131)	-	22-20 AWG 0.50-0.75mm ²	1.40mm-1.90mm	SILICONE
1.20 SYSTEM CABLE SEAL ROUND		TAN	FCI (QSR)	C073510 (A-0419B)	-	0.35mm ²	1.20mm-1.40mm	SILICONE
1.20 SYSTEM SEAL PLUG		GREEN	FCI (QSR)	C628010 (A-0412)	-	-	-	SILICONE



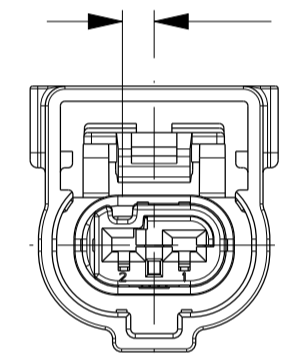
ISOMETRIC VIEW
SCALE 1:1



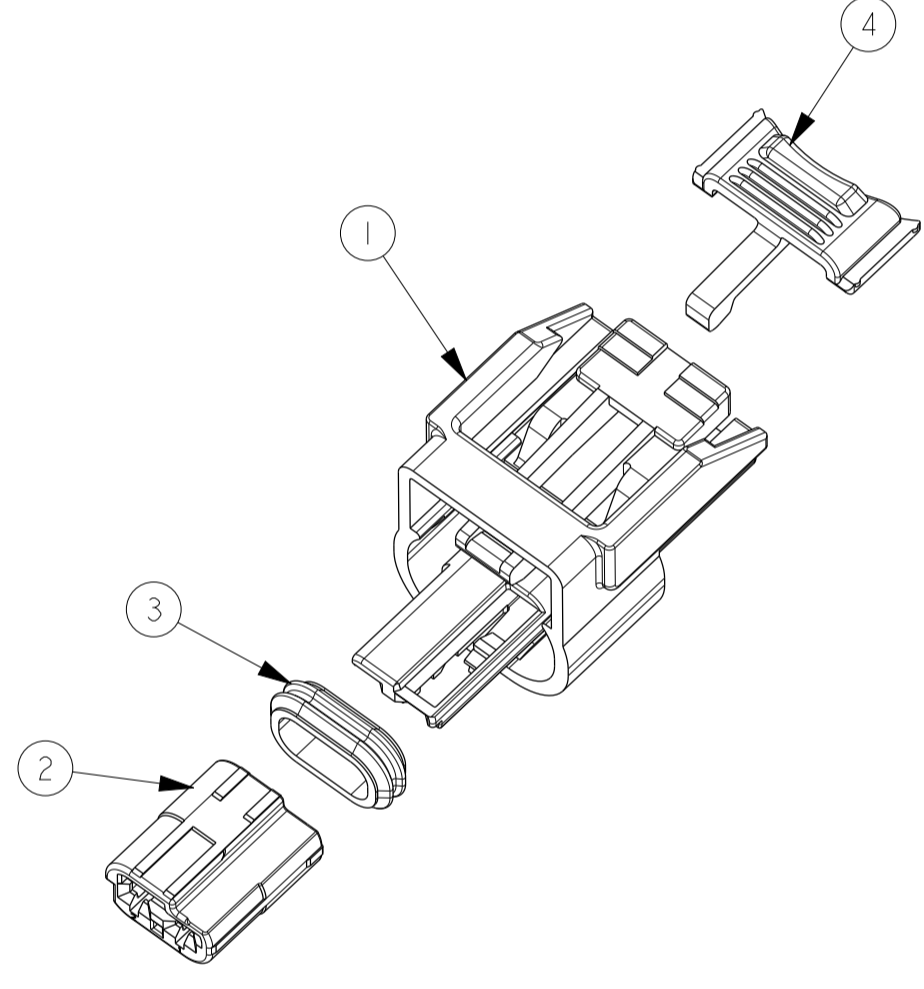
KEY A



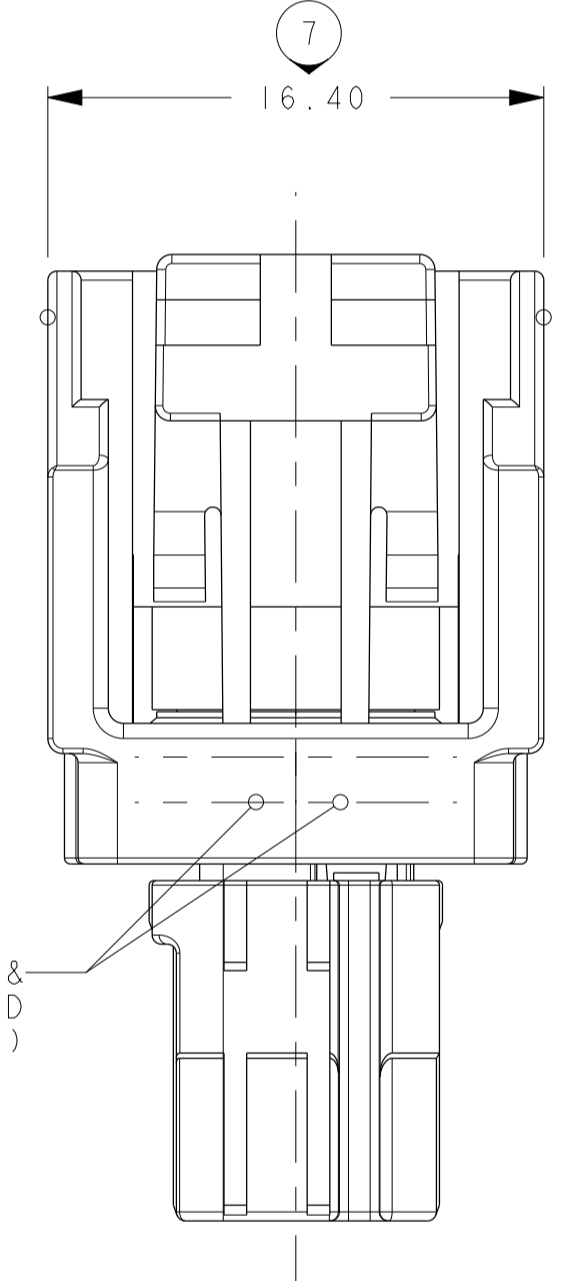
KEY B



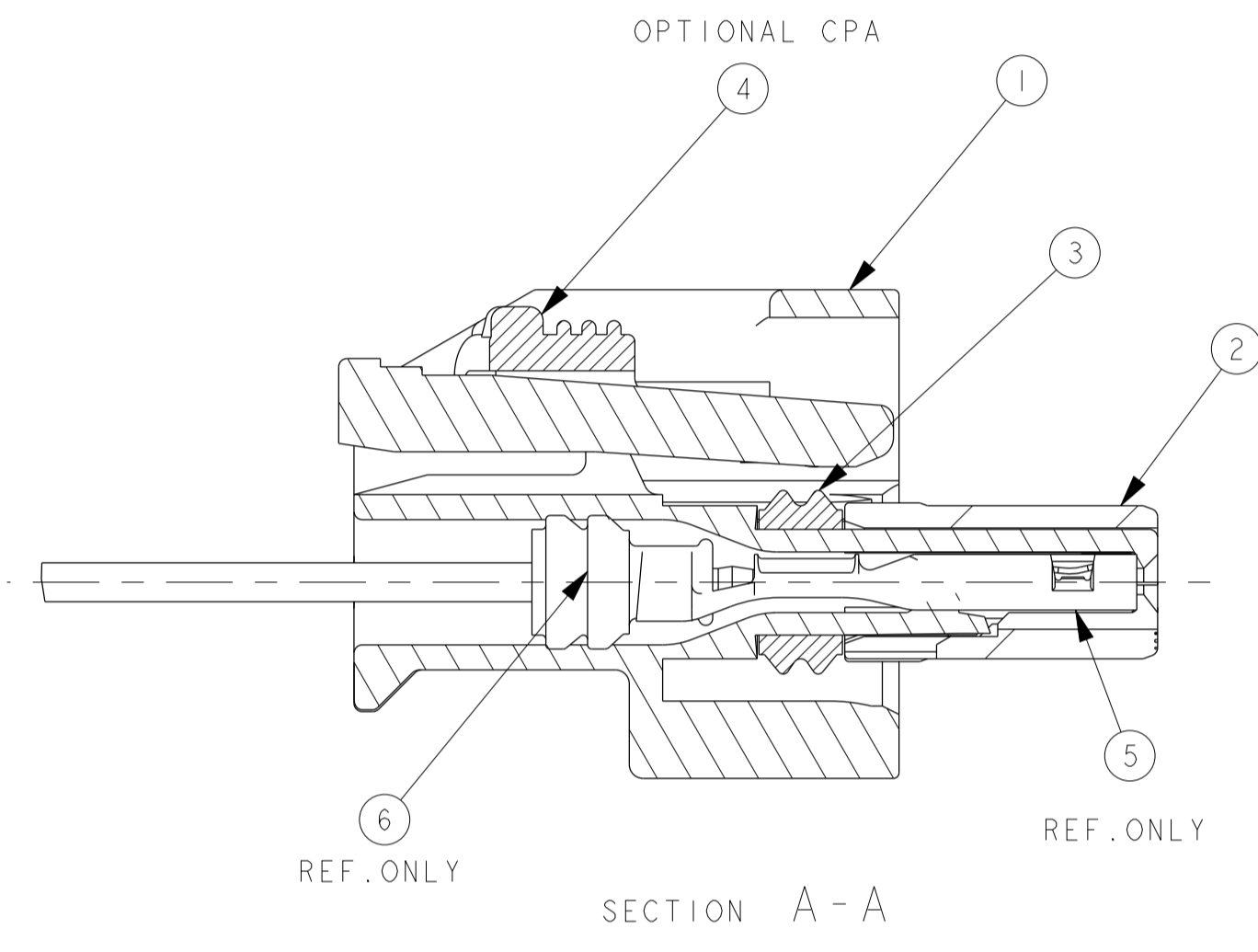
KEY C



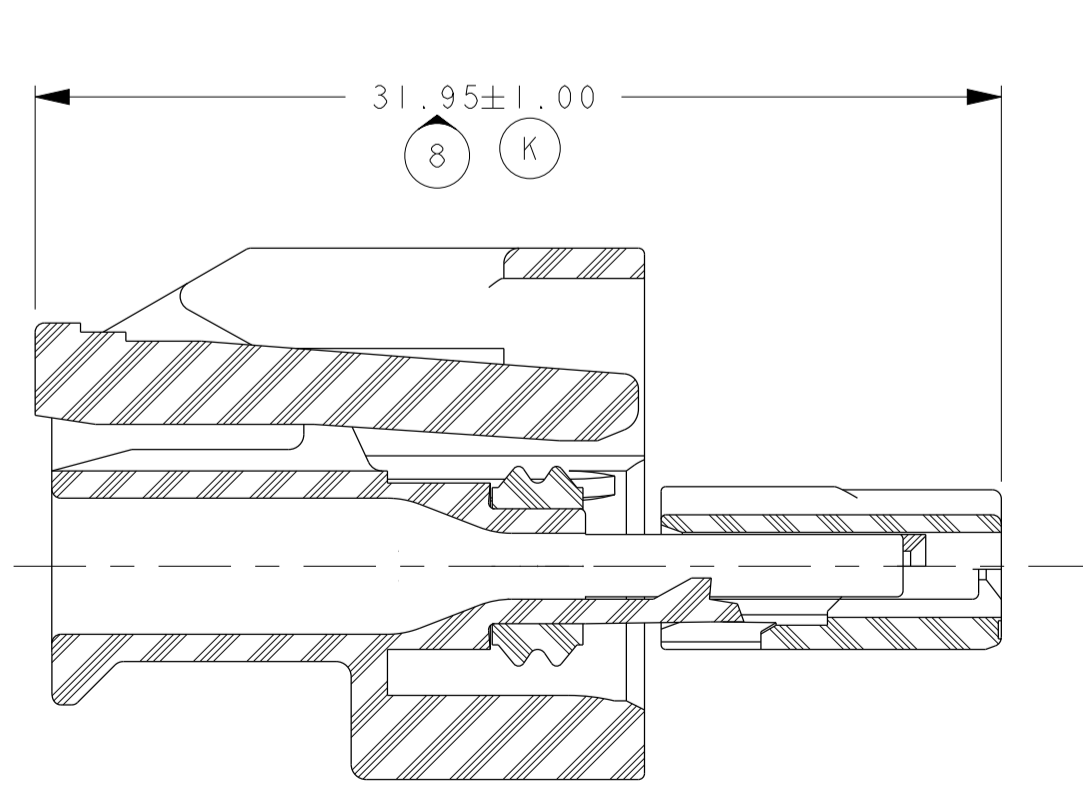
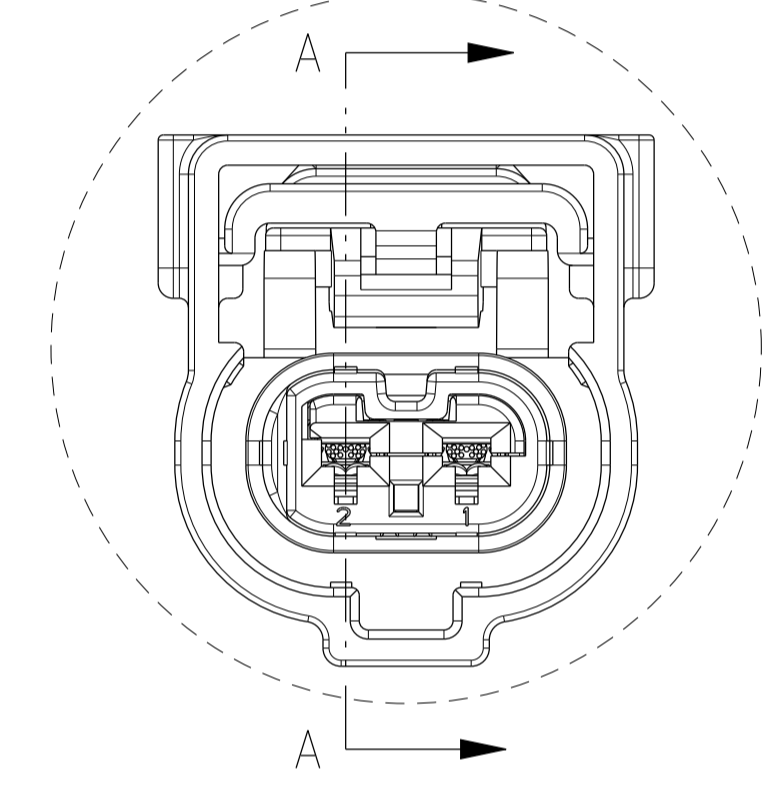
EXPLODED VIEW
(OPTIONAL CPA SHOWN)
SCALE 2:1



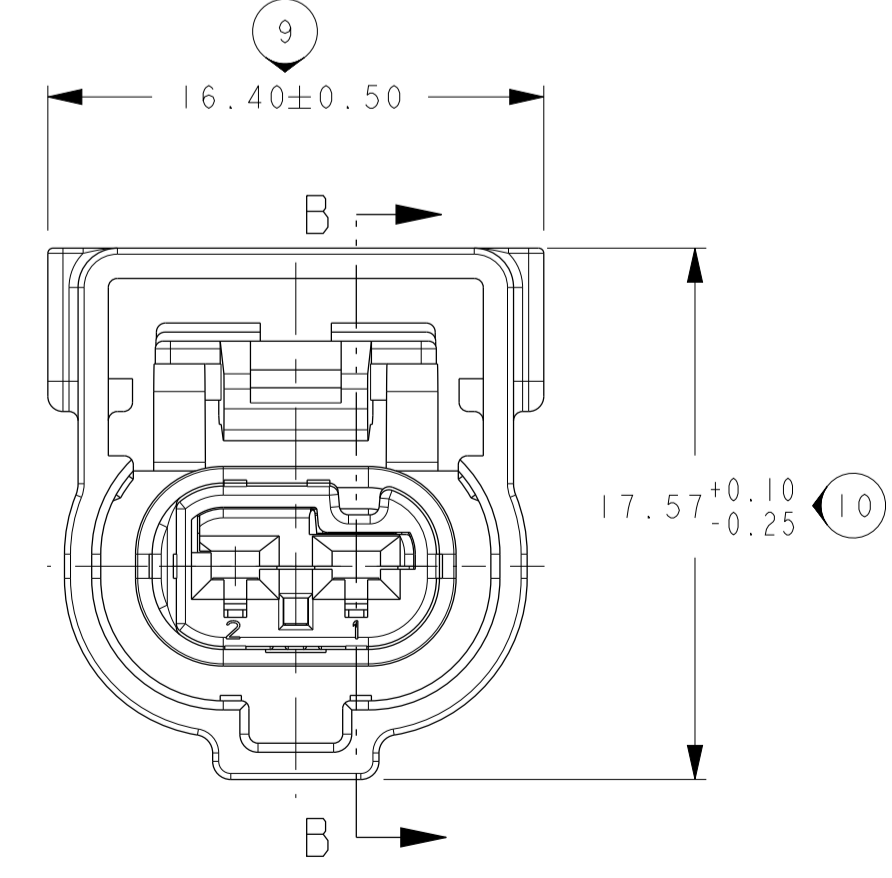
(ASSEMBLY DATE CODE & PART NUMBER APPLIED IN THIS LOCATION)



SECTION A-A



SECTION B-B



NOTES:

- VALIDATED TO SAE/USCAR-2 REV 5
 - VALIDATED TO THE FOLLOWING TEMP, VIBRATION, AND SEALING CLASSES:
 - GMW3191 SECTION 4.28 V4 T4 (155°C) WITH GOLD OR SILVER TERMINALS
 - SAE/USCAR-2 V3 T4 (150°C) WITH GOLD OR SILVER TERMINALS
 - SAE/USCAR-2 V3 T3 (125°C) WITH TIN/SILVER TERMINALS
 - SAE/USCAR-2 V2 T3 (125°C) WITH TIN TERMINALS
 - SAE/USCAR-2 SEALING S3 T4 (150°C) (ISO16750 9K EQUIVALENT)
 - CONNECTOR MAY BE USED WITH THE FOLLOWING TERMINALS:
 - FCI APEX 1.2 TERMINALS LISTED IN THE APPLICABLE COMPONENTS CHART ON THIS DRAWING WITH WIRE SIZES DEFINED IN NOTE 4.
 - SEE FCI DRAWING C18001-1-2-CUST FOR SPECIFIC TERMINAL DETAILS AND CRIMPING REQUIREMENTS
 - PLATING OF TERMINALS AND MATING DEVICE BLADES MUST BE COMPATIBLE
 - CONNECTOR SYSTEM VALIDATED TO USCAR-2 REQUIREMENTS WITH THE FOLLOWING RANGE OF WIRE SIZES AND TYPES IN CONJUNCTION WITH APPROPRIATE COMPONENTS FOUND IN THE "APPLICABLE COMPONENTS" CHART:
 - AWG - WIRE SIZES: 22AWG - 16AWG
 - INSULATION DIAMETER: 1.50mm MIN - 2.41mm MAX
 - WIRE TYPE: MIL123-A, MS-8288, MS-9502 OR EQUIVALENT (STRUCTURE AND PROPERTIES ACCORDING TO SAE J1128)
 - METRIC - WIRE SIZES: 0.35mm² - 1.25mm²
 - INSULATION DIAMETER: 1.20mm MIN - 2.30mm MAX
 - WIRE TYPE: FLR2X, FLR9X OR EQUIVALENT (STRUCTURE AND PROPERTIES ACCORDING TO ISO 6722)
- CONTACT FCI ENGINEERING REGARDING USE OF OTHER WIRE SIZES AND/OR TYPES
- WIRE AND INSULATION TYPE MUST BE APPROPRIATE FOR TEMPERATURE CLASS & APPLICATION ENVIRONMENT
- CONNECTOR IS MATE COMPATIBLE WITH DEVICES WHICH CONFORM WITH THE FOLLOWING USCAR INTERFACE SPECIFICATIONS:
 - 120-S-002-1-201 (WITH EWCAP-001 TYPE 120-T BLADES)
 - 120-S-002-1-202 (WITH EWCAP-001 TYPE 120-T BLADES)
 - ANNUAL QUALITY REQUIREMENTS:
 - IT IS PERMISSIBLE TO PERFORM CONTINUOUS CONFORMANCE PER FCI SPECIFICATION #AQA-001 INSTEAD OF ANNUAL LAYOUT AND ANNUAL PV REQUIREMENTS OF ISO TS16949 AND SAE/USCAR-2 REV 5. FOR TERMINAL TO CONNECTOR AND TPA TO CONNECTOR ONLY.
 - SOURCE ID, MOLD & CAVITY ID SIGNIFIES TOOL OWNERSHIP, FOR REFERENCE
 - (K) INDICATES IN-PROCESS INSPECTION FOR MANUFACTURING DIMENSIONS OR SPECIFICATIONS.

PART BOM F695100 COLOR WAS BROWN, F660400 COLOR WAS BROWN		ECN-12-01227 APP CHRT ADD PART NUMBER C073510, ADD 0.35MM & 22GA WIRE INFO	
NOTES REVISE NOTE 4 WITH 0.35MM & 22GA INFO		ECN-12-00892 - NEW RELEASE	
PROJECT SPEC:	PACKAGING SPEC:	APPLICATION SPEC:	THIS DRAWING AND ALL OTHER INFORMATION CONTAINED THEREIN IS PROPRIETARY AND THE PROPERTY OF FCI. THIS DRAWING MAY NOT BE COPIED, REPRODUCED OR DISCLOSED TO ANY THIRD PARTY WITHOUT THE EXPRESSED WRITTEN PERMISSION OF FCI. FCI April 10, 1999
TOLERANCES: ±0.1, ±2*	MATERIAL:	ECO Loc: C46	AN
CONTRACT NO.:	COLOUR:	ECO Loc: C46	AN
DO NOT MEASURE DRAWING	TOOL NO.:	ECO Loc: C46	AN
DATE:	NAME:	TITLE:	DRAWING NUMBER
2018/02/18	Frank HOLZER	2W SensoMate 12 Assembly	PCC0682863
2018/09/21	Matt MAJON	PROJECT	STATE
2018/09/21	Shasha BIAN	12MM USCAR INTERFACE	PART NUMBER
2018/09/21	Frank HOLZER	ESR NO.:	CAT. NO.:
2018/09/21	Frank HOLZER	FILE NAME:	PCC0682863
DOCUMENT UNDER PDS CONTROL. NO MODIFICATION ALLOWED OUTSIDE		See Table	