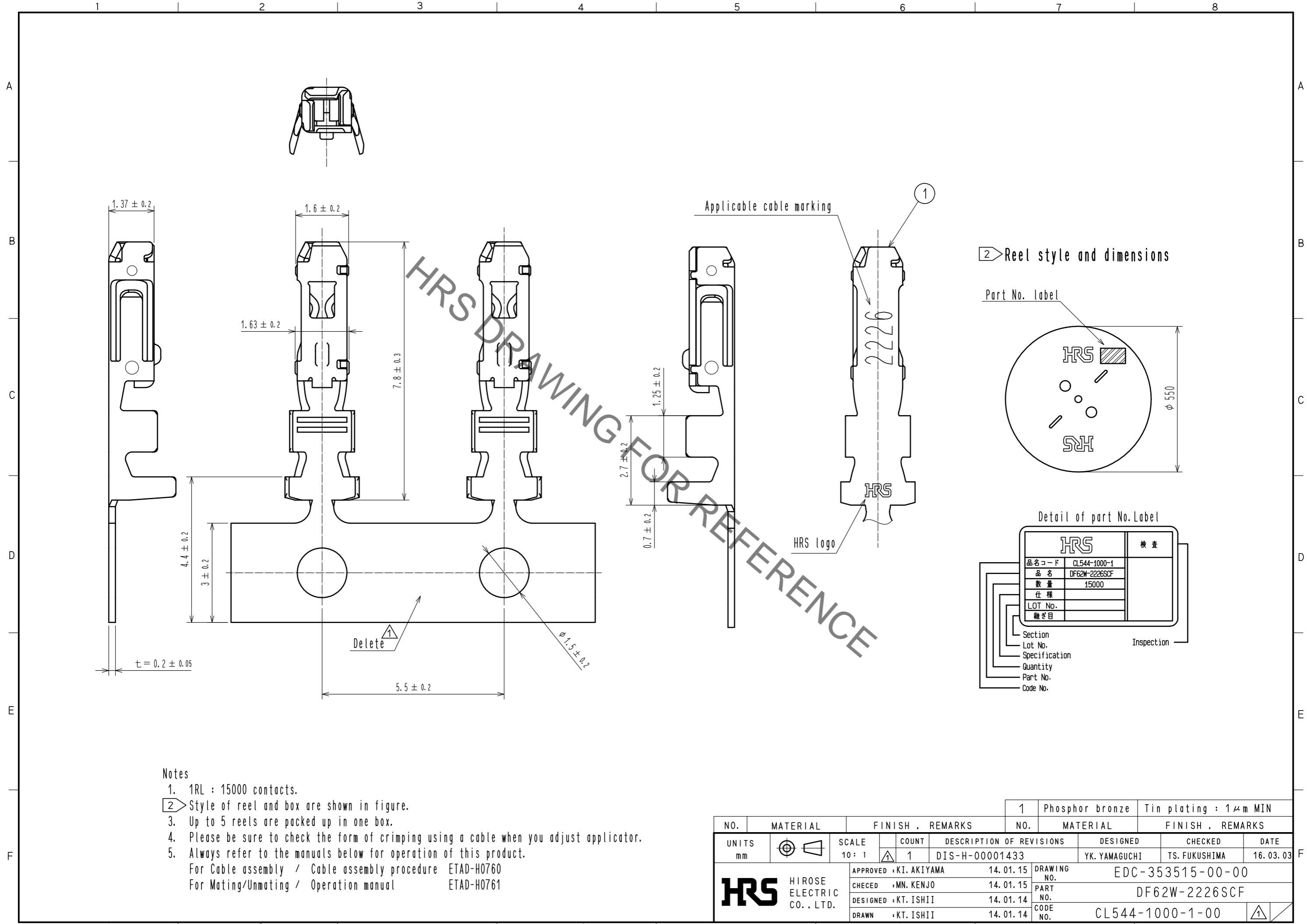


Apr.1.2019 Copyright 2019 HIROSE ELECTRIC CO., LTD. All Rights Reserved.  
In case of consideration for using Automotive equipment / device which demand high reliability, kindly contact our sales window correspondents.



**Notes**

1. 1RL : 15000 contacts.
- ② Style of reel and box are shown in figure.
3. Up to 5 reels are packed up in one box.
4. Please be sure to check the form of crimping using a cable when you adjust applicator.
5. Always refer to the manuals below for operation of this product.  
For Cable assembly / Cable assembly procedure ETAD-H0760  
For Mating/Unmating / Operation manual ETAD-H0761

NO.	MATERIAL	FINISH . REMARKS	NO.	MATERIAL	FINISH . REMARKS		
1	Phosphor bronze	Tin plating : 1μm MIN					
UNITS	mm	SCALE	COUNT	DESCRIPTION OF REVISIONS	DESIGNED	CHECKED	DATE
		10 : 1	1	DIS-H-00001433	YK. YAMAGUCHI	TS. FUKUSHIMA	16. 03. 03
<b>HRS</b> HIROSE ELECTRIC CO., LTD.		APPROVED : KI. AKIYAMA	14. 01. 15	DRAWING NO. EDC-353515-00-00			
		CHECED : MN. KENJO	14. 01. 15	PART NO. DF62W-2226SCF			
		DESIGNED : KT. ISHII	14. 01. 14	CODE NO. CL544-1000-1-00			
		DRAWN : KT. ISHII	14. 01. 14				