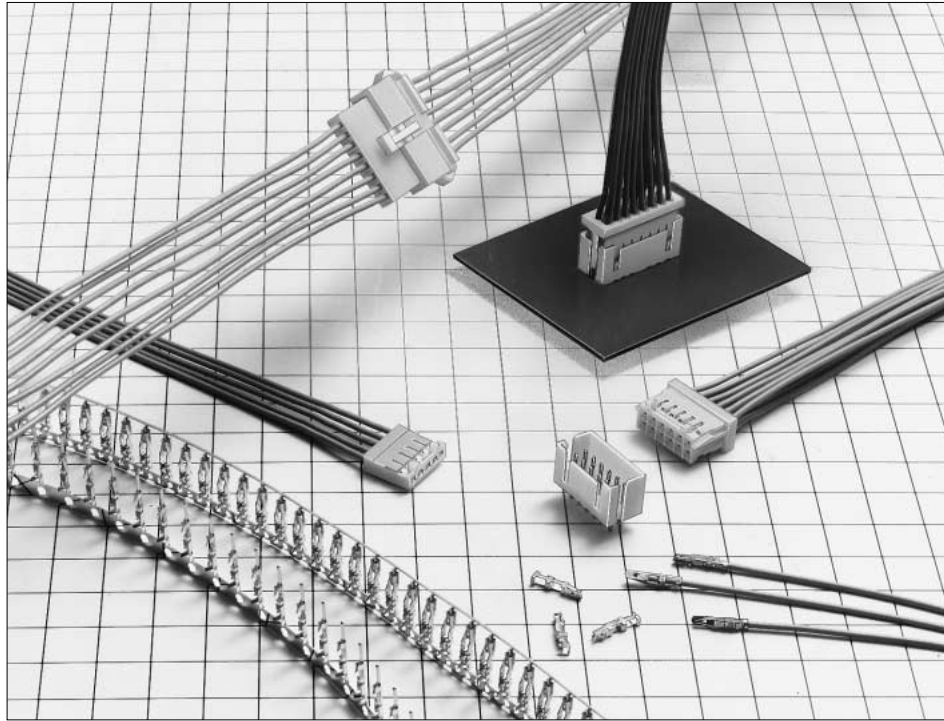


# 2.5mm Pitch Connector for Discrete Wire Connection (Product Compliant with UL/CSA Standard)

## DF1B Series



### ■ Features

#### 1. New Insulation Displacement and Crimping Ideas

This connector is a new type to insert the ID contacts in the case. Using this method, the following merits can be gained.

- ① By using the ID contact and crimping contact together, different current capacity cables can be mixed in one case.
- ② After connection, the contact can be replaced in excellent maintainability.
- ③ Because the insulation displacement area is protected by the case, high reliability can be assured.
- ④ Since the insulation displacement process can be performed only by replacing the applicator of the existing crimping machine, no expensive machine for insulation displacement is required.

#### 2. Potting Header Available

The high profile header is also available, corresponding to the board potting process (sealed with resin) as waterproof measures.

#### 3. Broad Variations

The single row and double row contacts are aligned for "Board to Cable" and "In-line" series, respectively, while standard tin and gold plating products are available.

(Refer to the applicable combination pattern on next page.)

### ■ Applications

Business equipment, particularly including the copy machine and printer

Cables with different current capacities can be mixed in one case

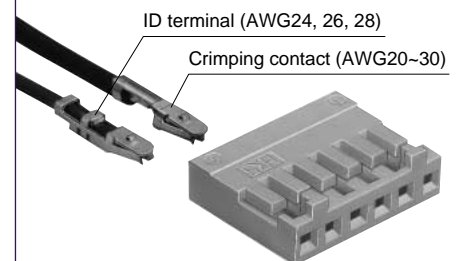


Figure 1

Potting status

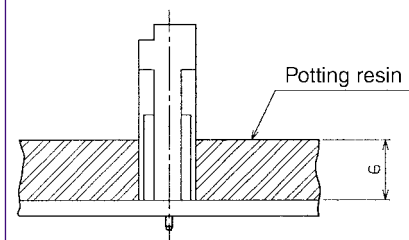
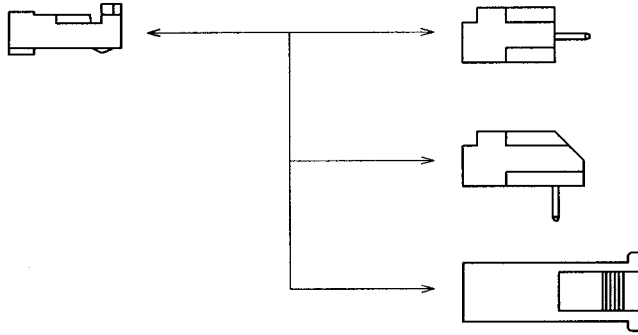


Figure 2

## ◆ Applicable Combination

### K Single Row Type

Socket (Cable Side)  
DF1B-※S-2.5R



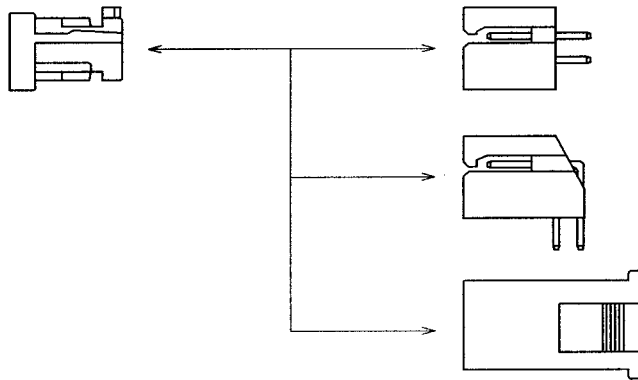
Straight DIP Type  
Pin header  
DF1B-※P-2.5DSA

Right angle DIP Type  
Pin header  
DF1B-※P-2.5DS

Panel Mount Type  
In-line plug (Cable side)  
DF1BA-※EP-2.5RC

### K Double Row Type

Socket (Cable Side)  
DF1B-※DS-2.5RC



Straight DIP Type  
Pin header  
DF1B-※DP-2.5DSA

Right angle DIP Type  
Pin header  
DF1B-※DP-2.5DS

Panel Mount Type  
In-line plug (Cable side)  
DF1BA-※DEP-2.5RC

In-line Connection Product (Cable to Cable Connection) : Full Lock Type

### K Single Row Type

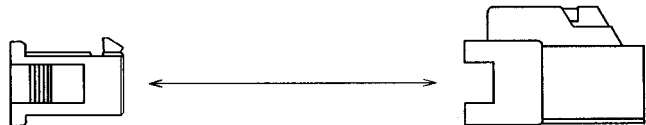
Socket (Cable Side)  
DF1B-※ES-2.5RC



In-line plug (Cable side)  
DF1B-※EP-2.5RC

### K Double Row Type

Socket (Cable Side)  
DF1B-※DES-2.5RC



In-line plug (Cable side)  
DF1B-※DEP-2.5RC

## Product Specifications

Rating	Rated Current (Note1)	Cable Size	AWG 20~24 : 3A AWG 26 : 2A AWG 28 : 1A AWG 30 : 0.5A	Operating Temperature Range	-35~+85°C (Note2)
	Rated Voltage		250V AC	Operating Moisture Range	40~80%
				Storage Temperature Range	-10~+60°C (Note3)
				Storage Moisture Range	40~70% (Note3)

UL-CSA Safety Standard Standardized Value			
Rating	Rated Current (Note1)	Cable Size	AWG 20~22 : 3A AWG 24~28 : 1A AWG 30 : 0.5A
	Rated Voltage		30V AC

■UL CSA Safety Standard File No.

UL : E52653

CSA : LR95109

Item	Specification	Condition
1. Insulation Resistance	1000MΩ Min	Measured at 500V DC
2. Withstand voltage	Neither short or breakdown	650V AC for 1 minute
3. Contact Resistance	30mΩ Max	Measured at 100mA
4. Inserter/Extraction Force	MIN0.44N (45gf), MAX4.4N(450gf)	Measure at the square steel pin of 0.635±0.002mm
5. Vibration	Electrical discontinuity, 1μS max.	10~55Hz and single amplitude 0.75mm in 3 directions for 2 hours, respectively.
6. Moisture Resistance	Contact resistance: 30mΩ max. Insulation resistance: 1000MΩ min.	Exposed to temperature 40±2°C and humidity 90~95% for 96 hours
7. Temperature Cycle	Contact resistance: 30mΩ max. Insulation resistance: 1000MΩ min.	(-55°C: 30 minutes → 15~35°C: 2~3 minutes 85°C: 30 minutes → 15~35°C: 2~3 minutes) 5 cycles
8. Operating Life	Contact resistance: 30mΩ max.	Tin plating : 30 cycles Gold plating : 50 cycles
9. Resistance to Soldering heat	No fusion on resin area to degrade performance	Reflow : 250°C for 10 seconds Manual soldering: Soldering iron temperature: 300°C for 2 seconds

Note1: The rated current will be changed according to cable sizes for use. For the header only, the rating is 3A.

Note2: Temperature rise included when energized

Note3: This storage indicates a long-term storage state for the unused product before board mounted.

The operating temperature and moisture range is applied to the non-energized state after the connector has been installed to the board.

Note4: The above standards represent this series. The individual formal agreement should be based on the "Specification".

## Material

Product	Part	Material	Finish	Remarks
Socket	Insulator	Polyamide	White	UL94V-0
ID Contact for Socket	Contact	Phosphor copper	Tin plating or gold plating	————
Crimping Contact for Socket	Contact	Phosphor copper	Tin plating or gold plating	————
Pin Header	Insulator	Polyamide	White	UL94V-0
	Contact	Brass	Tin plating or gold plating	————
In-line Plug	Insulator	Polyamide	White	UL94V-0
ID Contact for In-line Plug	Contact	Phosphor copper	Tin plating or gold plating	————
Crimping Contact for In-line Plug	Contact	Phosphor copper	Tin plating or gold plating	————

Note: The whisker method is implemented for tin plating.

## Ordering Information

Please determine the specific product. If needed, please select and order the product from the product No. as listed on catalog pages B153~B164.

### KConnector

**DF 1B - \* S 2.5 RC**  
q w e r t y

<b>q</b> Series Name : DF	<b>r</b> Connector Type	<b>t</b> Contact Pitch: 2.5mm
<b>w</b> Series No. : 1B	S : Single row socket	<b>y</b> Contact Type
<b>e</b> Number of Contacts	DS : Double row socket	RC : ID/crimping socket (Note)
Single Row : 2~16, 18, 20	P : Single row pin header	DSA : Straight dip
Double Row : 4~30, 34, 40	DP : Double row pin header	DS : Right angle dip
	ES : Single row in-line socket	Note: The single row socket DF1B-*S-2.5R only adds "R" to the tail, which has the same meaning as "RC".
	DES : Double row in-line socket	
	EP : Single row in-line plug	
	DEP : Double row in-line plug	

### KSocket ID Contact

**DF1B - R 24 F A**  
q w e r

<b>q</b> 1. Connection Type	<b>e</b> Packaging Type
R : ID	None : Bag
<b>w</b> Applicable Cable Size	F : Reel
24 : AWG24	<b>r</b> Plating Type
26 : AWG26	None : Tin plating
28 : AWG28	A : Gold plating

### KPlug ID Contact

**DF1B - 24 P R F B**  
q w e r t

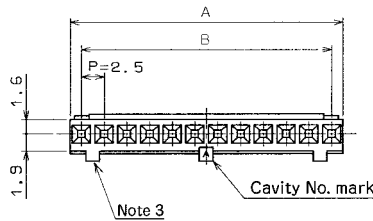
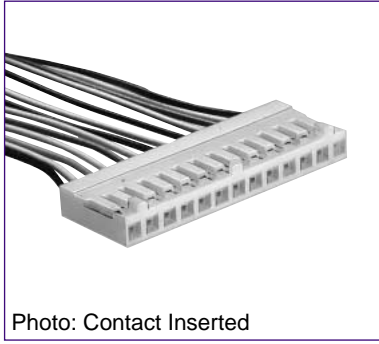
<b>q</b> Applicable Cable Size	<b>r</b> Packaging Type
24 : AWG24	None : Bag
26 : AWG26	F : Reel
28 : AWG28	<b>t</b> Plating Type
<b>w</b> Connector Type	None : Tin plating
P : Plug	A : Gold plating
<b>e</b> Connection Type	
R : ID	

### KCrimping Contact

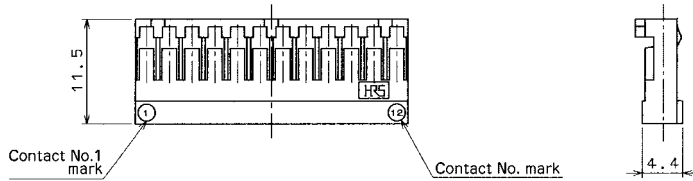
**DF1B - 24 P R F B**  
q w e r t

<b>q</b> Applicable Cable Size	<b>e</b> Plating Type
2022 : AWG20~22	None : Tin plating
2428 : AWG24~28	A : Gold plating
28 : AWG30	B : Gold plating (Note)
<b>w</b> Packaging Type	Note: In case of the socket contact, "A" is attached to the tail of the product name. In case of the plug contact, "B" is attached thereto.
SCF : Socket Contact/Reel	
SC : Socket Contact/Bag	
PCF : Plug Contact/Reel	
PC : Plug Contact/Bag	

## Single Row Socket



[Specific No.] -\*\*,(\*\*)  
None :100 pcs. per bag

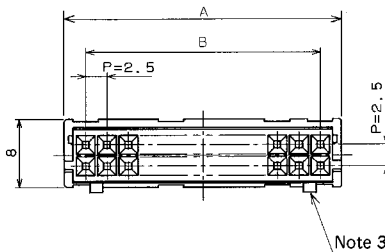
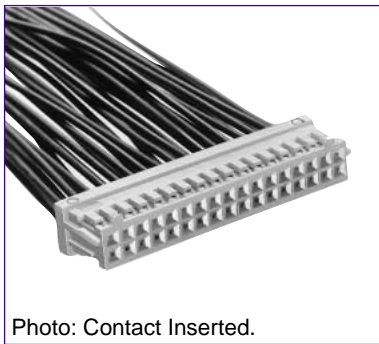


Unit: mm

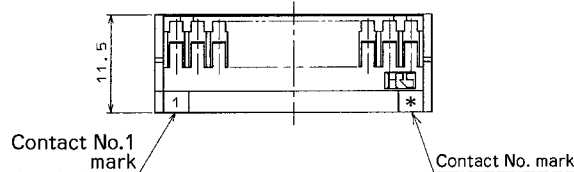
Product No.	HRS No.	Number of Contacts	A	B	Product No.	HRS No.	Number of Contacts	A	B
DF1B- 2S-2.5R(**)	CL541-0200-6-**-	2	5	2.5	DF1B-11S-2.5R(**)	CL541-0209-0-**-	11	27.5	25
DF1B- 3S-2.5R(**)	CL541-0201-9-**-	3	7.5	5	DF1B-12S-2.5R(**)	CL541-0210-0-**-	12	30	27.5
DF1B- 4S-2.5R(**)	CL541-0202-1-**-	4	10	7.5	DF1B-13S-2.5R(**)	CL541-0211-2-**-	13	32.5	30
DF1B- 5S-2.5R(**)	CL541-0203-4-**-	5	12.5	10	DF1B-14S-2.5R(**)	CL541-0212-5-**-	14	35	32.5
DF1B- 6S-2.5R(**)	CL541-0204-7-**-	6	15	12.5	DF1B-15S-2.5R(**)	CL541-0213-8-**-	15	37.5	35
DF1B- 7S-2.5R(**)	CL541-0205-0-**-	7	17.5	15	DF1B-16S-2.5R(**)	CL541-0214-0-**-	16	40	37.5
DF1B- 8S-2.5R(**)	CL541-0206-2-**-	8	20	17.5	DF1B-18S-2.5R(**)	CL541-0215-3-**-	18	45	42.5
DF1B- 9S-2.5R(**)	CL541-0207-5-**-	9	22.5	20	DF1B-20S-2.5R(**)	CL541-0216-6-**-	20	50	47.5
DF1B-10S-2.5R(**)	CL541-0208-8-**-	10	25	22.5					

Note1: The quantity at the specific No. "None" is delivered by the bag unit (100 pcs.). If needed, please order the product per bag.  
 Note2: The 2 contact connector contains the convex portion to prevent mis-insertion in the center at one point, which is different from the above figure. The 3 to 7 contacts connectors have the area at both ends.

## Double Row Socket



[Specific No.] -\*\*,(\*\*)  
None :100 pcs. per bag

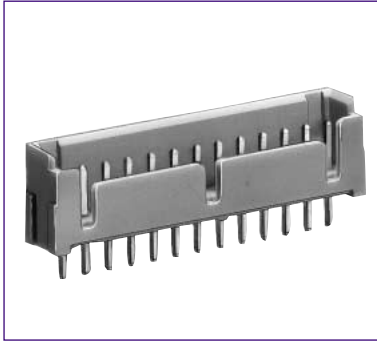


Unit: mm

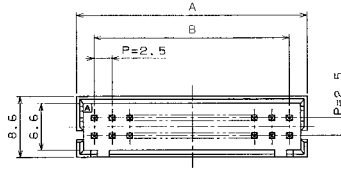
Product No.	HRS No.	Number of Contacts	A	B	Product No.	HRS No.	Number of Contacts	A	B
DF1B- 4DS-2.5RC(**)	CL541-0648-0-**-	4	7.5	2.5	DF1B-22DS-2.5RC(**)	CL541-0606-0-**-	22	30	25
DF1B- 6DS-2.5RC(**)	CL541-0649-3-**-	6	10	5	DF1B-24DS-2.5RC(**)	CL541-0607-3-**-	24	32.5	27.5
DF1B- 8DS-2.5RC(**)	CL541-0650-2-**-	8	12.5	7.5	DF1B-26DS-2.5RC(**)	CL541-0608-6-**-	26	35	30
DF1B-10DS-2.5RC(**)	CL541-0600-4-**-	10	15	10	DF1B-28DS-2.5RC(**)	CL541-0609-9-**-	28	37.5	32.5
DF1B-12DS-2.5RC(**)	CL541-0601-7-**-	12	17.5	12.5	DF1B-30DS-2.5RC(**)	CL541-0610-8-**-	30	40	35
DF1B-14DS-2.5RC(**)	CL541-0602-0-**-	14	20	15	DF1B-34DS-2.5RC(**)	CL541-0612-3-**-	34	45	40
DF1B-16DS-2.5RC(**)	CL541-0603-2-**-	16	22.5	17.5	DF1B-36DS-2.5RC(**)	CL541-0613-6-**-	36	47.5	42.5
DF1B-18DS-2.5RC(**)	CL541-0604-5-**-	18	25	20	DF1B-40DS-2.5RC(**)	CL541-0615-1-**-	40	52.5	47.5
DF1B-20DS-2.5RC(**)	CL541-0605-8-**-	20	27.5	22.5					

Note1: The quantity at the specific No. "None" is delivered by the bag unit (100 pcs.). If needed, please order the product per bag.  
 Note2: The 4 contact connector contains the convex portion to prevent miss-insertion in the center at one point, which is different from the above figure.

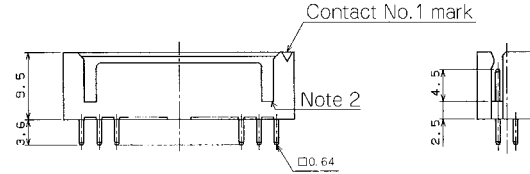
## Double Row Straight Pin Header



●Board Through-hole Diameter:  $\phi 1.1^{+0.1}$



[Specific No.] -\*\* , (\*\*)  
None: Tin plating  
(01) : Gold plating



Unit: mm

Product No.	HRS No.	Number of Contacts	A	B	Product No.	HRS No.	Number of Contacts	A	B
DF1B- 4DP-2.5DSA(**)	CL541-0651-5-**-*	4	7.5	2.5	DF1B-20DP-2.5DSA(**)	CL541-0621-4-**-*	20	27.5	22.5
DF1B- 6DP-2.5DSA(**)	CL541-0652-8-**-*	6	10	5	DF1B-22DP-2.5DSA(**)	CL541-0622-7-**-*	22	30	25
DF1B- 8DP-2.5DSA(**)	CL541-0653-0-**-*	8	12.5	7.5	DF1B-24DP-2.5DSA(**)	CL541-0623-0-**-*	24	32.5	27.5
DF1B-10DP-2.5DSA(**)	CL541-0616-4-**-*	10	15	10	DF1B-26DP-2.5DSA(**)	CL541-0624-2-**-*	26	35	30
DF1B-12DP-2.5DSA(**)	CL541-0617-7-**-*	12	17.5	12.5	DF1B-28DP-2.5DSA(**)	CL541-0625-5-**-*	28	37.5	32.5
DF1B-14DP-2.5DSA(**)	CL541-0618-0-**-*	14	20	15	DF1B-30DP-2.5DSA(**)	CL541-0626-8-**-*	30	40	35
DF1B-16DP-2.5DSA(**)	CL541-0619-2-**-*	16	22.5	17.5	DF1B-34DP-2.5DSA(**)	CL541-0628-3-**-*	34	45	40
DF1B-18DP-2.5DSA(**)	CL541-0620-1-**-*	18	25	20	DF1B-40DP-2.5DSA(**)	CL541-0631-8-**-*	40	52.5	47.5

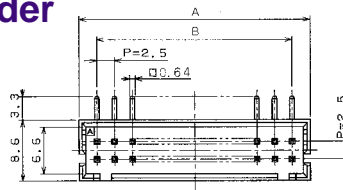
Note 1. The quantity at the specific No. "None" is delivered by the bag unit (100 pcs.). If needed, please order the product per bag.

Note 2. The 4 and 6 contact connector contains the concave portion to prevent miss-insertion in the center area at one point, which is different from the above figure.

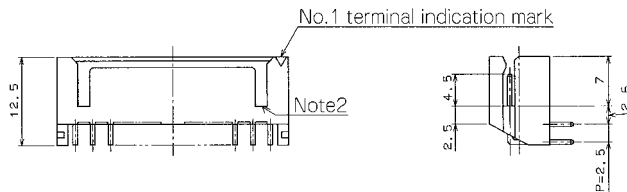
## Double Row Right Angle Pin Header



●K Board Through-hole Diameter:  $\phi 1.1^{+0.1}$



[Specific No.] -\*\* , (\*\*)  
None: Tin plating  
(01) : Gold plating



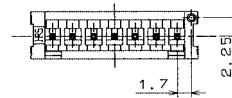
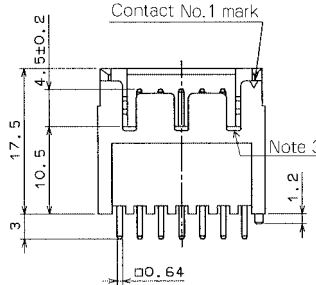
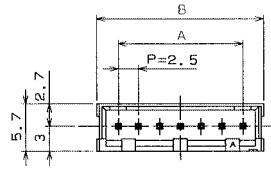
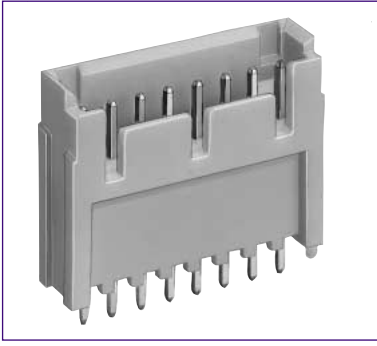
Unit: mm

Product No.	HRS No.	Number of Contacts	A	B	Product No.	HRS No.	Number of Contacts	A	B
DF1B- 4DP-2.5DS(**)	CL541-0654-3-**-*	4	7.5	2.5	DF1B-22DP-2.5DS(**)	CL541-0638-7-**-*	22	30	25
DF1B- 6DP-2.5DS(**)	CL541-0655-6-**-*	6	10	5	DF1B-24DP-2.5DS(**)	CL541-0639-0-**-*	24	32.5	27.5
DF1B- 8DP-2.5DS(**)	CL541-0656-9-**-*	8	12.5	7.5	DF1B-26DP-2.5DS(**)	CL541-0640-9-**-*	26	35	30
DF1B-10DP-2.5DS(**)	CL541-0632-0-**-*	10	15	10	DF1B-28DP-2.5DS(**)	CL541-0641-1-**-*	28	37.5	32.5
DF1B-12DP-2.5DS(**)	CL541-0633-3-**-*	12	17.5	12.5	DF1B-30DP-2.5DS(**)	CL541-0642-4-**-*	30	40	35
DF1B-14DP-2.5DS(**)	CL541-0634-6-**-*	14	20	15	DF1B-34DP-2.5DS(**)	CL541-0644-0-**-*	34	45	40
DF1B-16DP-2.5DS(**)	CL541-0635-9-**-*	16	22.5	17.5	DF1B-36DP-2.5DS(**)	CL541-0645-2-**-*	36	47.5	42.5
DF1B-18DP-2.5DS(**)	CL541-0636-1-**-*	18	25	20	DF1B-40DP-2.5DS(**)	CL541-0647-8-**-*	40	52.5	47.5
DF1B-20DP-2.5DS(**)	CL541-0637-4-**-*	20	27.5	22.5					

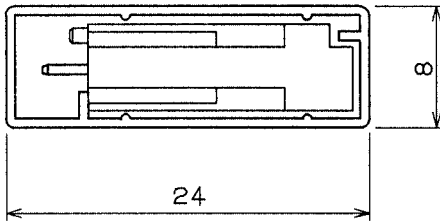
Note 1. The quantity at the specific No. "None" is delivered by the bag unit (100 pcs.). If needed, please order the product per bag.

Note 2. The 4 and 6 contact connector contains the concave portion to prevent miss-insertion in the center area at one point, which is different from the above figure.

## Single Row Straight Pin Header for Potting



### Tube Size



Unit: mm

Product No.	HRS No.	Number of Contacts	A	B	Tube Package Quantity
DF1BD- 2P-2.5DSA(**)	CL541-0800-3-***	2	2.5	7.5	64pieces
DF1BD- 3P-2.5DSA(**)	CL541-0801-6-***	3	5	10	48
DF1BD- 4P-2.5DSA(**)	CL541-0802-9-***	4	7.5	12.5	38
DF1BD- 5P-2.5DSA(**)	CL541-0803-1-***	5	10	15	32
DF1BD- 6P-2.5DSA(**)	CL541-0804-4-***	6	12.5	17.5	27
DF1BD- 7P-2.5DSA(**)	CL541-0805-7-***	7	15	20	24
DF1BD- 8P-2.5DSA(**)	CL541-0806-0-***	8	17.5	22.5	21
DF1BD- 9P-2.5DSA(**)	CL541-0807-2-***	9	20	25	19
DF1BD-10P-2.5DSA(**)	CL541-0808-5-***	10	22.5	27.5	17

K Board Positioning Boss Hole Diameter:  $\phi 1.1^{+0.1}$   
 K Board Through-hole Diameter:  $\phi 1.1^{+0.1}$

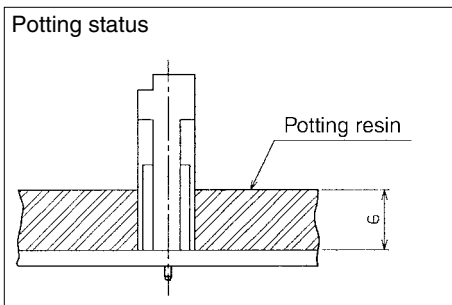
[Specific No.] -\* \*, (\* \*)  
 None: Tin plating  
 (20) : Tin plated, tube packaging

Note 1. A packaging quantity is delivered by the bag unit (100 pcs.). If needed, please order the product per pack.

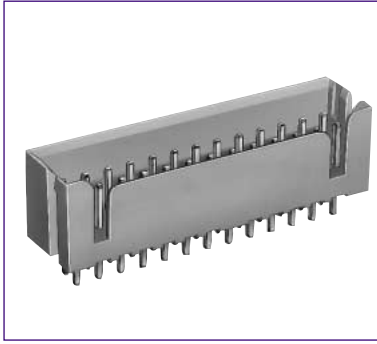
Note 2. Please order the tube packaging products, multiplying the packaging quantity (pieces).

Note 3. The 2 and 3 contact connector contains the concave portion to prevent miss-insertion in the center at one point, which is different from the above figure. In addition, the 4 to 7 contacts connectors have two concave portions at both ends.

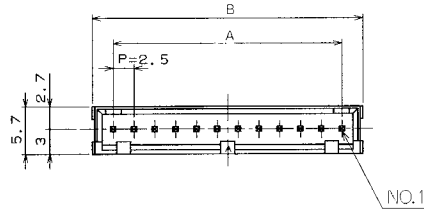
### Applicable Potting Thickness : 6mm



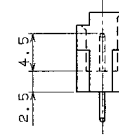
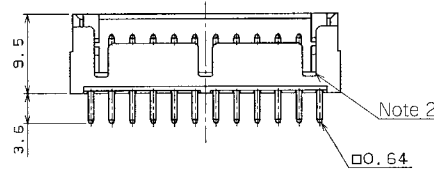
## Single Row Straight Pin Header



K Board Through-hole Diameter:  $\phi 1.1^{+0.1}$



[Specific No.] -\*\* , (\*\*)  
None: Tin plating  
(01) : Gold plating



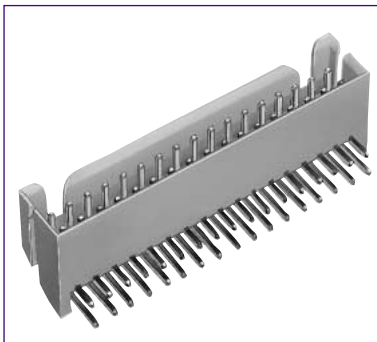
Unit: mm

Product No.	HRS No.	Number of Contacts	A	B	Product No.	HRS No.	Number of Contacts	A	B
DF1B- 2P-2.5DSA(**)	CL541-0225-7-**	2	2.5	7.5	DF1B-11P-2.5DSA(**)	CL541-0234-8-**	11	25	30
DF1B- 3P-2.5DSA(**)	CL541-0226-0-**	3	5	10	DF1B-12P-2.5DSA(**)	CL541-0235-0-**	12	27.5	32.5
DF1B- 4P-2.5DSA(**)	CL541-0227-2-**	4	7.5	12.5	DF1B-13P-2.5DSA(**)	CL541-0236-3-**	13	30	35
DF1B- 5P-2.5DSA(**)	CL541-0228-5-**	5	10	15	DF1B-14P-2.5DSA(**)	CL541-0237-6-**	14	32.5	37.5
DF1B- 6P-2.5DSA(**)	CL541-0229-8-**	6	12.5	17.5	DF1B-15P-2.5DSA(**)	CL541-0238-9-**	15	35	40
DF1B- 7P-2.5DSA(**)	CL541-0230-7-**	7	15	20	DF1B-16P-2.5DSA(**)	CL541-0239-1-**	16	37.5	42.5
DF1B- 8P-2.5DSA(**)	CL541-0231-0-**	8	17.5	22.5	DF1B-18P-2.5DSA(**)	CL541-0240-0-**	18	42.5	47.5
DF1B- 9P-2.5DSA(**)	CL541-0232-2-**	9	20	25	DF1B-20P-2.5DSA(**)	CL541-0241-3-**	20	47.5	52.5
DF1B-10P-2.5DSA(**)	CL541-0233-5-**	10	22.5	27.5					

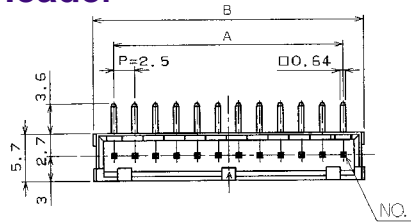
Note 1. The quantity at the specific No. "None" is delivered by the bag unit (100 pcs.) If needed, please order the product per bag.

Note 2. The 2 and 3 contact connector contains the concave portion to prevent miss-insertion in the center at one point, which is different from the above figure. In addition, the 4 to 7 contact connectors have two concave portions at both ends.

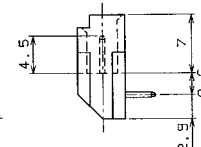
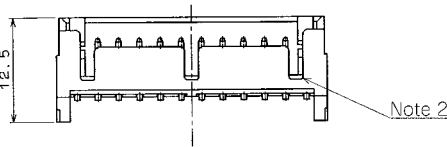
## Single Row Right Angle Pin Header



K Board Through-hole Diameter:  $\phi 1.1^{+0.1}$



[Specific No.] -\*\* , (\*\*)  
None: Tin plating  
(01) : Gold plating



Unit: mm

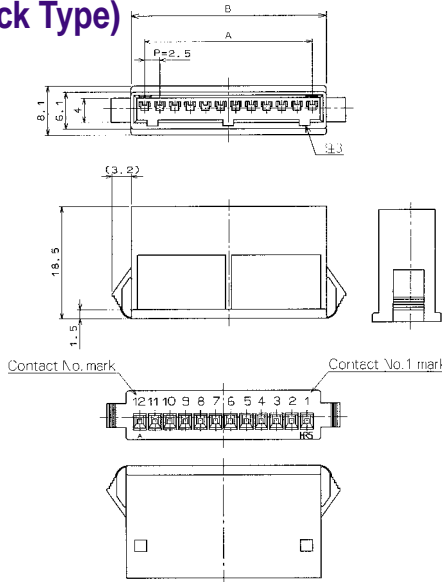
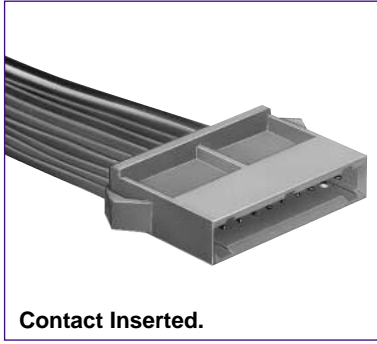
Product No.	HRS No.	Number of Contacts	A	B	Product No.	HRS No.	Number of Contacts	A	B
DF1B- 2P-2.5DS(**)	CL541-0242-6-**	2	2.5	7.5	DF1B-11P-2.5DS(**)	CL541-0251-7-**	11	25	30
DF1B- 3P-2.5DS(**)	CL541-0243-9-**	3	5	10	DF1B-12P-2.5DS(**)	CL541-0252-0-**	12	27.5	32.5
DF1B- 4P-2.5DS(**)	CL541-0244-1-**	4	7.5	12.5	DF1B-13P-2.5DS(**)	CL541-0253-2-**	13	30	35
DF1B- 5P-2.5DS(**)	CL541-0245-4-**	5	10	15	DF1B-14P-2.5DS(**)	CL541-0254-5-**	14	32.5	37.5
DF1B- 6P-2.5DS(**)	CL541-0246-7-**	6	12.5	17.5	DF1B-15P-2.5DS(**)	CL541-0255-8-**	15	35	40
DF1B- 7P-2.5DS(**)	CL541-0247-0-**	7	15	20	DF1B-16P-2.5DS(**)	CL541-0256-0-**	16	37.5	42.5
DF1B- 8P-2.5DS(**)	CL541-0248-2-**	8	17.5	22.5	DF1B-18P-2.5DS(**)	CL541-0257-3-**	18	42.5	47.5
DF1B- 9P-2.5DS(**)	CL541-0249-5-**	9	20	25	DF1B-20P-2.5DS(**)	CL541-0258-6-**	20	47.5	52.5
DF1B-10P-2.5DS(**)	CL541-0250-4-**	10	22.5	27.5					

Note 1. The quantity at the specific No. "None" is delivered by the bag unit (100 pcs.) If needed, please order the product per bag.

Note 2. The 4 and 6 contact connector contains the concave portion to prevent miss-insertion in the center at one point, which is different from the above figure.



## Single Row In-line Plug(Simple Lock Type)



**K** Applicable Socket: DF1B-\*S-2.5R

[Specific No.] -\*\* \*, (\*\* \*)  
None: Tin plating  
(01) : Gold plating

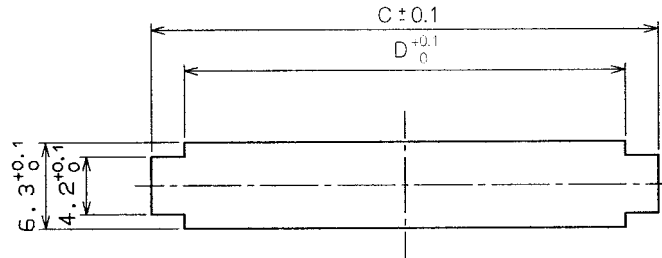
Unit: mm

Product No.	HRS No.	Number of Contacts	A	B	Product No.	HRS No.	Number of Contacts	A	B
DF1BA- 2EP-2.5RC(**)	CL541-0700-9-***	2	2.5	7.1	DF1BA- 8EP-2.5RC**	CL541-0706-5-***	8	17.5	22.1
DF1BA- 3EP-2.5RC(**)	CL541-0701-1-***	3	5	9.6	DF1BA- 9EP-2.5RC**	CL541-0707-8-***	9	20	24.6
DF1BA- 4EP-2.5RC(**)	CL541-0702-4-***	4	7.5	12.1	DF1BA-10EP-2.5RC**	CL541-0708-0-***	10	22.5	27.1
DF1BA- 5EP-2.5RC(**)	CL541-0703-7-***	5	10	14.6	DF1BA-11EP-2.5RC**	CL541-0709-3-***	11	25	29.6
DF1BA- 6EP-2.5RC(**)	CL541-0704-0-***	6	12.5	17.1	DF1BA-12EP-2.5RC**	CL541-0710-2-***	12	27.5	32.1
DF1BA- 7EP-2.5RC(**)	CL541-0705-2-***	7	15	19.6	DF1BA-13EP-2.5RC**	CL541-0711-5-***	13	30	34.6

Note 1.The quantity at the specific No. "None" is delivered by the bag unit (100 pcs.). If needed, please order the product per bag.

Note 2.The 2 contacts connector contains the concave portion to prevent miss-insertion in the center area at one point, which is different from the above figure.In addition, the 3 to 7 contact connectors contain the concave portion at both sides.

## Panel Cutouts



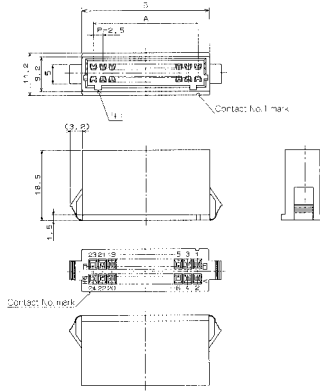
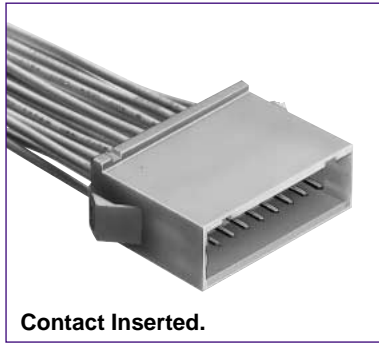
Unit: mm

Applicable Plug	Number of Contacts	C			D
		Panel Board Thickness (Note 1)			
		0.5~1.2	1.3~1.6	1.7~2.0	
DF1BA- 2EP-2.5RC(**)	2	11.2	11.9	12.6	7.3
DF1BA- 3EP-2.5RC(**)	3	13.7	14.4	15.1	9.8
DF1BA- 4EP-2.5RC(**)	4	16.2	16.9	17.6	12.3
DF1BA- 5EP-2.5RC(**)	5	18.7	19.4	20.1	14.8
DF1BA- 6EP-2.5RC(**)	6	21.2	21.9	22.6	17.3
DF1BA- 7EP-2.5RC(**)	7	23.7	24.4	25.1	19.8
DF1BA- 8EP-2.5RC(**)	8	26.2	26.9	27.6	22.3
DF1BA- 9EP-2.5RC(**)	9	28.7	29.4	30.1	24.8
DF1BA-10EP-2.5RC(**)	10	31.2	31.9	32.6	27.3
DF1BA-11EP-2.5RC(**)	11	33.7	34.4	35.1	29.8
DF1BA-12EP-2.5RC(**)	12	36.2	36.9	37.6	32.3
DF1BA-13EP-2.5RC(**)	13	38.7	39.4	40.1	34.8

Note 1.The installation hole size C according to panel board thickness.

Note 2.Fabricate installation holes so that no burr can occur.

## Double Row In-line Plug (Simple Lock Type)



Applicable Socket: DF1B-\*DS-2.5RC

[Specific No.] -\* \*, (\* \*)  
None: 100 pcs. per pack

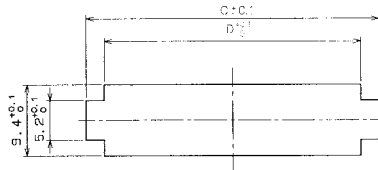
Unit: mm

Product No.	HRS No.	Number of Contacts	A	B	Product No.	HRS No.	Number of Contacts	A	B
DF1BA- 4DEP-2.5RC(**)	CL541-0719-7-***	4	2.5	8.6	DF1BA-20DEP-2.5RC(**)	CL541-0727-5-***	20	22.5	28.6
DF1BA- 6DEP-2.5RC(**)	CL541-0720-6-***	6	5	11.1	DF1BA-22DEP-2.5RC(**)	CL541-0728-8-***	22	25	31.1
DF1BA- 8DEP-2.5RC(**)	CL541-0721-9-***	8	7.5	13.6	DF1BA-24DEP-2.5RC(**)	CL541-0729-0-***	24	27.5	33.6
DF1BA-10DEP-2.5RC(**)	CL541-0722-1-***	10	10	16.1	DF1BA-26DEP-2.5RC(**)	CL541-0730-0-***	26	30	36.1
DF1BA-12DEP-2.5RC(**)	CL541-0723-4-***	12	12.5	18.6	DF1BA-28DEP-2.5RC(**)	CL541-0731-2-***	28	32.5	38.6
DF1BA-14DEP-2.5RC(**)	CL541-0724-7-***	14	15	21.1	DF1BA-30DEP-2.5RC(**)	CL541-0732-5-***	30	35	41.1
DF1BA-16DEP-2.5RC(**)	CL541-0725-0-***	16	17.5	23.6	DF1BA-34DEP-2.5RC(**)	CL541-0734-0-***	34	40	46.1
DF1BA-18DEP-2.5RC(**)	CL541-0726-2-***	18	20	26.1					

Note 1.The quantity at the specific No. "None" is delivered by the bag unit (100 pcs.). If needed, please order the product per bag.

Note 2.The 4 contacts connector contains the concave portion to prevent miss-insertion in the center at one point, which is different from the above figure.

## Panel Cutouts



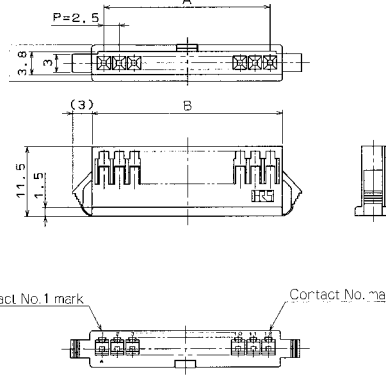
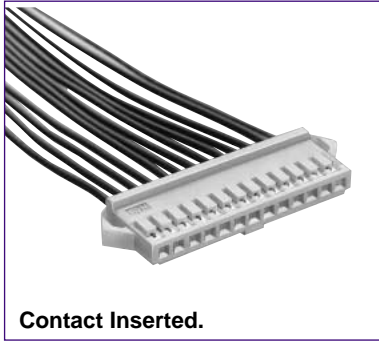
Unit: mm

Applicable Plug	Number of Contacts	C			D
		Panel Board Thickness (Note 1)			
		0.5~1.2	1.3~1.6	1.7~2.0	
DF1BA- 4DEP-2.5RC	4	12.7	13.4	14.1	8.8
DF1BA- 6DEP-2.5RC	6	15.2	15.9	16.6	11.3
DF1BA- 8DEP-2.5RC	8	17.7	18.4	19.1	13.8
DF1BA-10DEP-2.5RC	10	20.2	20.9	21.6	16.3
DF1BA-12DEP-2.5RC	12	22.7	23.4	24.1	18.8
DF1BA-14DEP-2.5RC	14	25.2	25.9	26.6	21.3
DF1BA-16DEP-2.5RC	16	27.7	28.4	29.1	23.8
DF1BA-18DEP-2.5RC	18	30.2	30.9	31.6	26.3
DF1BA-20DEP-2.5RC	20	32.7	33.4	34.1	28.8
DF1BA-22DEP-2.5RC	22	35.2	35.9	36.6	31.3
DF1BA-24DEP-2.5RC	24	37.7	38.4	39.1	33.8
DF1BA-26DEP-2.5RC	26	40.2	40.9	41.6	36.3
DF1BA-28DEP-2.5RC	28	42.7	43.4	44.1	38.8
DF1BA-30DEP-2.5RC	30	45.2	45.9	46.6	41.3
DF1BA-34DEP-2.5RC	34	50.2	50.9	51.6	46.3

Note 1.The installation hole size C according to panel board thickness.

Note 2.Fabricate installation holes so that no burr can occur.

## Single Row In-line Socket (Full Lock Type)



**K** Applicable Socket: DF1B-\*DEP-2.5RC

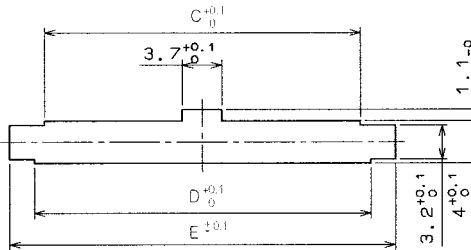
[Specific No.] -\* \*, (\* \*)  
None: 100 pcs. per pack

Unit: mm

Product No.	HRS No.	Number of Contacts	A	B	Product No.	HRS No.	Number of Contacts	A	B
DF1B- 2ES-2.5RC	CL541-0320-8-	2	2.5	6.5	DF1B- 8ES-2.5RC	CL541-0326-4-	8	17.5	21.5
DF1B- 3ES-2.5RC	CL541-0321-0-	3	5	9	DF1B- 9ES-2.5RC	CL541-0327-7-	9	20	24
DF1B- 4ES-2.5RC	CL541-0322-3-	4	7.5	11.5	DF1B-10ES-2.5RC	CL541-0328-0-	10	22.5	26.5
DF1B- 5ES-2.5RC	CL541-0323-6-	5	10	14	DF1B-11ES-2.5RC	CL541-0329-2-	11	25	29
DF1B- 6ES-2.5RC	CL541-0324-9-	6	12.5	16.5	DF1B-12ES-2.5RC	CL541-0330-1-	12	27.5	31.5
DF1B- 7ES-2.5RC	CL541-0325-1-	7	15	19	DF1B-13ES-2.5RC	CL541-0331-4-	13	30	34

Note 1.The quantity at the specific No. "None" is delivered by the bag unit (100 pcs.). If needed, please order the product per bag.

## Panel Cutouts



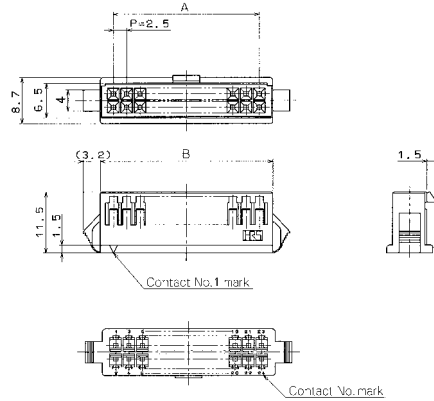
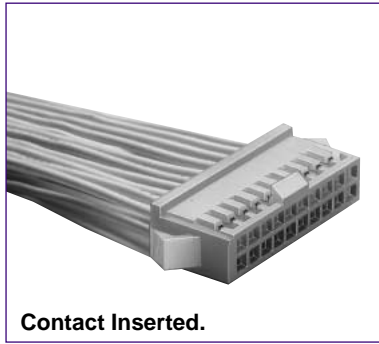
Unit: mm

Applicable Plug	Number of Contacts	C	D	E		
				Panel Board Thickness (Note 1)		
				0.5~1.2	1.3~1.6	1.7~2.0
DF1B- 2ES-2.5RC	2	4.7	6.7	10.8	11.3	12
DF1B- 3ES-2.5RC	3	7.2	9.2	13.3	13.8	14.5
DF1B- 4ES-2.5RC	4	9.7	11.7	15.8	16.3	17
DF1B- 5ES-2.5RC	5	12.2	14.2	18.3	18.8	19.5
DF1B- 6ES-2.5RC	6	14.7	16.7	20.8	21.3	22
DF1B- 7ES-2.5RC	7	17.2	19.2	23.3	23.8	24.5
DF1B- 8ES-2.5RC	8	19.7	21.7	25.8	26.3	27
DF1B- 9ES-2.5RC	9	22.2	24.2	28.3	28.8	29.5
DF1B-10ES-2.5RC	10	24.7	26.7	30.8	31.3	32
DF1B-11ES-2.5RC	11	27.2	29.2	33.3	33.8	34.5
DF1B-12ES-2.5RC	12	29.7	31.7	35.8	36.3	37
DF1B-13ES-2.5RC	13	32.2	34.2	38.3	38.8	39.5

Note 1.The installation hole size C will be changed according to panel board thickness.

Note 2.Fabricate installation holes so that no burr can occur.

## Double Row In-line Socket (Full Lock Type)



Applicable Socket: DF1B-\*EP-2.5RC

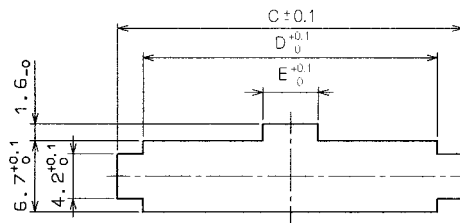
[Specific No.] -\* \*, (\* \*)  
None: 100 pcs. per pack

Unit: mm

Product No.	HRS No.	Number of Contacts	A	B	Product No.	HRS No.	Number of Contacts	A	B
DF1B-10DES-2.5RC(**)	CL541-0351-1-*	10	10	15	DF1B-24DES-2.5RC(**)	CL541-0357-8-*	24	27.5	32.5
DF1B-12DES-2.5RC(**)	CL541-0352-4-*	12	12.5	17.5	DF1B-26DES-2.5RC(**)	CL541-0358-0-*	26	30	35
DF1B-14DES-2.5RC(**)	CL541-0353-7-*	14	15	20	DF1B-28DES-2.5RC(**)	CL541-0359-3-*	28	32.5	37.5
DF1B-16DES-2.5RC(**)	CL541-0354-0-*	16	17.5	22.5	DF1B-30DES-2.5RC(**)	CL541-0360-2-*	30	35	40
DF1B-18DES-2.5RC(**)	CL541-0346-1-*	18	20	25	DF1B-32DES-2.5RC(**)	CL541-0361-5-*	32	37.5	42.5
DF1B-20DES-2.5RC(**)	CL541-0355-2-*	20	22.5	27.5	DF1B-34DES-2.5RC(**)	CL541-0362-8-*	34	40	45
DF1B-22DES-2.5RC(**)	CL541-0356-5-*	22	25	30					

Note 1. The quantity at the specific No. "None" is delivered by the bag unit (100 pcs.). If needed, please order the product per bag.

## Panel Cutouts



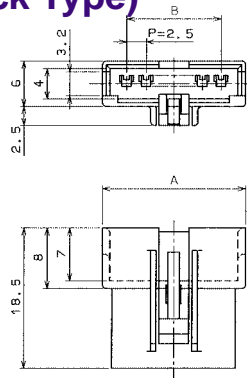
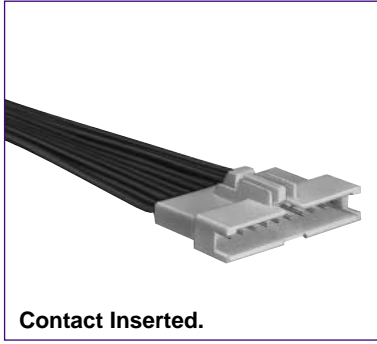
Unit: mm

Applicable Plug	Number of Contacts	C			D	E
		Panel Board Thickness (Note 1)				
		0.5~1.2	1.3~1.6	1.7~2.0		
DF1B-10DES-2.5RC(**)	10	19.1	19.8	20.5	15.2	3.7
DF1B-12DES-2.5RC(**)	12	21.6	22.3	23	17.7	3.7
DF1B-14DES-2.5RC(**)	14	24.1	24.8	25.5	20.2	3.7
DF1B-16DES-2.5RC(**)	16	26.6	27.3	28	22.7	3.7
DF1B-18DES-2.5RC(**)	18	29.1	29.8	30.5	25.2	3.7
DF1B-20DES-2.5RC(**)	20	31.6	32.3	33	27.7	5.2
DF1B-22DES-2.5RC(**)	22	34.1	34.8	35.5	30.2	5.2
DF1B-24DES-2.5RC(**)	24	36.6	37.3	38	32.7	5.2
DF1B-26DES-2.5RC(**)	26	39.1	39.8	40.5	35.2	5.2
DF1B-28DES-2.5RC(**)	28	41.6	42.3	43	37.7	5.2
DF1B-30DES-2.5RC(**)	30	44.1	44.8	45.5	40.2	5.2
DF1B-32DES-2.5RC(**)	32	46.6	47.3	48	42.7	5.2
DF1B-34DES-2.5RC(**)	34	49.1	49.8	50.5	45.2	5.2

Note 1. The installation hole size C according to panel board thickness.

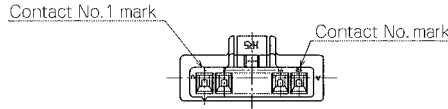
Note 2. Fabricate installation holes so that no burr can occur.

## Single Row In-line Plug (Full Lock Type)



**K** Applicable Socket: DF1B-\*ES-2.5RC

[Specific No.] -\* \*, (\* \*)  
None: 100 pcs. per pack

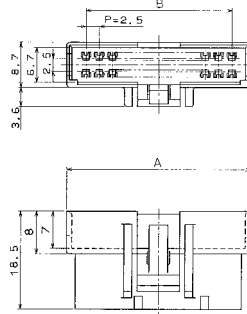
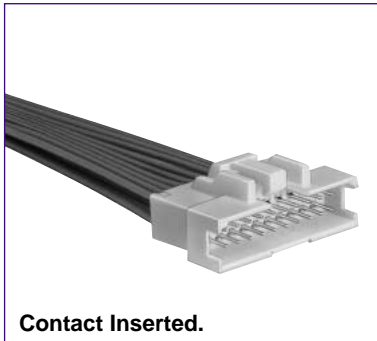


Unit: mm

Product No.	HRS No.	Number of Contacts	A	B	Product No.	HRS No.	Number of Contacts	A	B
DF1B- 2EP-2.5RC(**)	CL541-0332-7-**	2	8.9	2.5	DF1B- 8EP-2.5RC(**)	CL541-0338-3-**	8	23.9	17.5
DF1B- 3EP-2.5RC(**)	CL541-0333-0-**	3	11.4	5	DF1B- 9EP-2.5RC(**)	CL541-0339-6-**	9	26.4	20
DF1B- 4EP-2.5RC(**)	CL541-0334-2-**	4	13.9	7.5	DF1B-10EP-2.5RC(**)	CL541-0340-5-**	10	28.9	22.5
DF1B- 5EP-2.5RC(**)	CL541-0335-5-**	5	16.4	10	DF1B-11EP-2.5RC(**)	CL541-0341-8-**	11	31.4	25
DF1B- 6EP-2.5RC(**)	CL541-0336-8-**	6	18.9	12.5	DF1B-12EP-2.5RC(**)	CL541-0342-0-**	12	33.9	27.5
DF1B- 7EP-2.5RC(**)	CL541-0337-0-**	7	21.4	15	DF1B-13EP-2.5RC(**)	CL541-0343-3-**	13	36.4	30

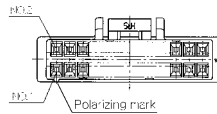
Note 1. The quantity at the specific No. "None" is delivered by the bag unit (100 pcs.). If needed, please order the product per bag.

## Double Row In-line Plug (Full Lock Type)



**K** Applicable Socket: DF1B-\*DES-2.5RC

[Specific No.] -\* \*, (\* \*)  
None: 100 pcs. per pack

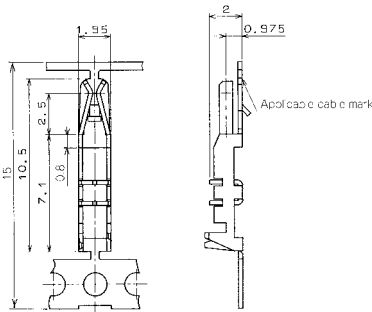


Unit: mm

Product No.	HRS No.	Number of Contacts	A	B	Product No.	HRS No.	Number of Contacts	A	B
DF1B-10DEP-2.5RC(**)	CL541-0366-9-**	10	17.2	10	DF1B-24DEP-2.5RC(**)	CL541-0372-1-**	24	34.7	27.5
DF1B-12DEP-2.5RC(**)	CL541-0367-1-**	12	19.7	12.5	DF1B-26DEP-2.5RC(**)	CL541-0373-4-**	26	37.2	30
DF1B-14DEP-2.5RC(**)	CL541-0368-4-**	14	22.2	15	DF1B-28DEP-2.5RC(**)	CL541-0374-7-**	28	39.7	32.5
DF1B-16DEP-2.5RC(**)	CL541-0369-7-**	16	24.7	17.5	DF1B-30DEP-2.5RC(**)	CL541-0375-0-**	30	42.2	35
DF1B-18DEP-2.5RC(**)	CL541-0350-9-**	18	27.2	20	DF1B-32DEP-2.5RC(**)	CL541-0376-2-**	32	44.7	37.5
DF1B-20DEP-2.5RC(**)	CL541-0370-6-**	20	29.7	22.5	DF1B-34DEP-2.5RC(**)	CL541-0377-5-**	34	47.2	40
DF1B-22DEP-2.5RC(**)	CL541-0371-9-**	22	32.2	25					

Note 1. The quantity at the specific No. "None" is delivered by the bag unit (100 pcs.). If needed, please order the product per bag.

## ■ ID Contact for Socket



Unit: mm

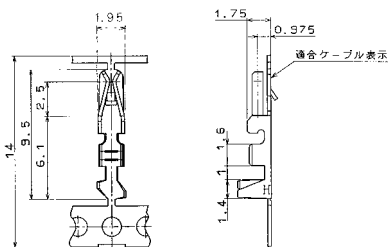
Product No.	HRS No.	Applicable Cable Indication	Applicable Cable				Packaging Type	Quantity	Finish	
			AWG	UL Style	Wire Construction	Jacket Diameter				
DF1B-R24F(**)	CL541-0217-9**	24	AWG 24	1061	11 cores./0.16mm	0.9~1.39mm	Reel	10000	Tin plating	
DF1B-R24(**)	CL541-0220-3**						Bag	100		
DF1B-R26F(**)	CL541-0218-1**	26	AWG 26	1061	7 cores./0.16mm	0.9~1.39mm	Reel	10000		
DF1B-R26(**)	CL541-0221-6**						Bag	100		
DF1B-R28F(**)	CL541-0219-4**	28	AWG 28	1061	7 cores./0.127mm	0.9~1.39mm	Reel	10000		
DF1B-R28(**)	CL541-0222-9**						Bag	100		
DF1B-R24FA(**)	CL541-0261-0**	24	AWG 24	1061	11 cores./0.16mm	0.9~1.39mm	Reel	10000		Gold plating
DF1B-R24A(**)	CL541-0264-9**						Bag	100		
DF1B-R26FA(**)	CL541-0262-3**	26	AWG 26	1061	7 cores./0.16mm	0.9~1.39mm	Reel	10000		
DF1B-R26A(**)	CL541-0265-1**						Bag	100		
DF1B-R28FA(**)	CL541-0263-6**	28	AWG 28	1061	7 cores./0.127mm	0.9~1.39mm	Reel	10000		
DF1B-R28A(**)	CL541-0266-4**						Bag	100		

### K ID Contact Extraction Tool DF-C-PO (A)

Note 1.The applicable cable conductor is the tin plated annealing copper wire.

Note 2.If other cables are used instead of the applicable cable, cotact Hirose sales department.

## ■ Crimping Contact for Socket



### K Applicable Cable (Tin Plated Annealing Copper Wire)

Conductor Size (Wire construction)
AWG20 (21cores/0.18mm)
AWG22 (17cores/0.16mm)
AWG24 (11cores/0.16mm)
AWG26 (7cores/0.16mm)
AWG28 (7cores/0.127mm)
AWG30 (7cores/0.1mm)

### K Recommended Cable

UL1061, UL1007

### K Strip Length

2.0~2.5mm

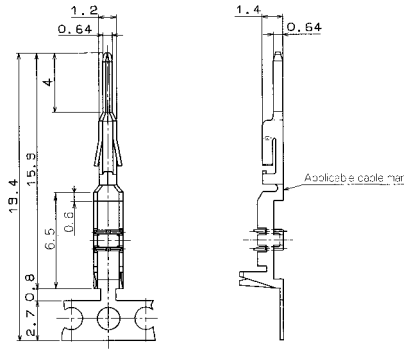
Note:If other cables are used instead of the applicable cable, consult Hirose sales department.

Unit: mm

Product No.	HRS No.	Applicable Cable Indication	Applicable Cable		Packaging Type	Quantity	Finish
			AWG	Jacket Diameter			
DF1B-2022SCF(**)	CL541-0223-1**	20	AWG 20~	1.2~1.9mm	Reel	10000	Tin plating
DF1B-2022SC(**)	CL541-0224-4**	22	AWG 22				
DF1B-2428SCF(**)	CL541-0678-1**	24	AWG 24~	0.9~1.5mm	Reel	10000	
DF1B-2428SC(**)	CL541-0679-4**	28	AWG 28				
DF1B-30SCF(**)	CL541-0682-9**	30	AWG 30	0.6~1.2mm	Reel	10000	
DF1B-30SC(**)	CL541-0683-1**				Bag	100	
DF1B-2022SCFA(**)	CL541-0662-1**	20	AWG 20~	1.2~1.9mm	Reel	10000	Gold plating
DF1B-2022SCA(**)	CL541-0663-4**	22	AWG 22				
DF1B-2428SCFA(**)	CL541-0680-3**	24	AWG 24~	0.9~1.5mm	Reel	10000	
DF1B-2428SCA(**)	CL541-0681-6**	28	AWG 28				
DF1B-30SCFA(**)	CL541-0684-4**	30	AWG 30	0.6~1.2mm	Reel	10000	
DF1B-30SCA(**)	CL541-0685-7**				Bag	100	

### K Crimping Contact Extraction Tool DF-C-PO (B)

## ID Contact for Plug



Unit: mm

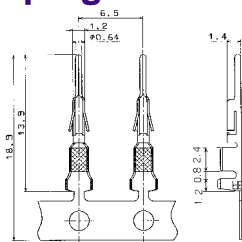
Product No.	HRS No.	Applicable Cable Indication	Applicable Cable				Packaging Type	Quantity	Finish	
			AWG	UL Style	Wire structure	Jacket Diameter				
DF1B-24PRF(**)	CL541-0666-2**	24	AWG 24	1061	11 pcs./0.16mm	0.9~1.39mm	Reel	10000	Tin plating	
DF1B-24PR(**)	CL541-0667-5**						Bag	100		
DF1B-26PRF(**)	CL541-0668-8**	26	AWG 26	1061	7 pcs./0.16mm	0.9~1.39mm	Reel	10000		
DF1B-26PR(**)	CL541-0669-0**						Bag	100		
DF1B-28PRF(**)	CL541-0670-0**	28	AWG 28	1061	7 pcs./0.127mm	0.9~1.39mm	Reel	10000		
DF1B-28PR(**)	CL541-0671-2**						Bag	100		
DF1B-24PRFB(**)	CL541-0672-5**	24	AWG 24	1061	11 pcs./0.16mm	0.9~1.39mm	Reel	10000		Gold plating
DF1B-24PRB(**)	CL541-0673-8**						Bag	100		
DF1B-26PRFB(**)	CL541-0674-0**	26	AWG 26	1061	7 pcs./0.16mm	0.9~1.39mm	Reel	10000		
DF1B-26PRB(**)	CL541-0675-3**						Bag	100		
DF1B-28PRFB(**)	CL541-0676-6**	28	AWG 28	1061	7 pcs./0.127mm	0.9~1.39mm	Reel	10000		
DF1B-28PRB(**)	CL541-0677-9**						Bag	100		

### K ID Contact Extraction Tool DF-C-PO (C)

Note 1.The applicable cable conductor is the tin plated annealing copper wire.

Note 2.If other cables are used instead of the applicable cable, contact Hirose sales department.

## Crimping Contact for Plug



### K Applicable Cable (Tin Plated Annealing Copper Wire)

Conductor Size (Contact wire construction)
AWG20 (21 pieces/0.18mm)
AWG22 (17 pieces/0.16mm)
AWG24 (11 pieces/0.16mm)
AWG26 (7 pieces/0.16mm)
AWG28 (7 pieces/0.127mm)
AWG30 (7 pieces/0.1mm)

### K Recommended Cable

UL1061, UL1007

### K Strip Length

3.0~3.7mm

Note:If other cables are used instead of the applicable cable, consult Hirose sales department.

Unit: mm

Product No.	HRS No.	Applicable Cable		Packaging Type	Quantity	Treatment	
		AWG	Jacket Diameter				
DF1B-2022PCF(**)	CL541-0259-9**	AWG 20~	1.2~1.9mm	Reel	10000	Tin plating	
DF1B-2022PC(**)	CL541-0260-8**	AWG 22		Bag	100		
DF1B-2428PCF(**)	CL541-0664-7**	AWG 24~	0.9~1.5mm	Reel	10000		
DF1B-2428PC(**)	CL541-0665-0**	AWG 28		Bag	100		
DF1B-30PCF(**)	CL541-0686-0**	AWG 30	0.6~1.2mm	Reel	10000		
DF1B-30PC(**)	CL541-0687-2**			Bag	100		
DF1B-2022PCFB(**)	CL541-0690-7**	AWG 20~	1.2~1.9mm	Reel	10000		Gold plating
DF1B-2022PCB(**)	CL541-0691-0**	AWG 22		Bag	100		
DF1-PD2428SCFB(**)	CL541-0660-6**	AWG 24~	0.9~1.5mm	Reel	10000		
DF1-PD2428SCB(**)	CL541-0661-9**	AWG 28		Bag	100		
DF1B-30PCFB(**)	CL541-0688-5**	AWG 30	0.6~1.2mm	Reel	10000		
DF1B-30PCB(**)	CL541-0689-8**			Bag	100		

### K Crimping Contact Extraction Tool DF-C-PO (C)

## ◆ Applicable Tool



[Press Main Unit and Applicator]



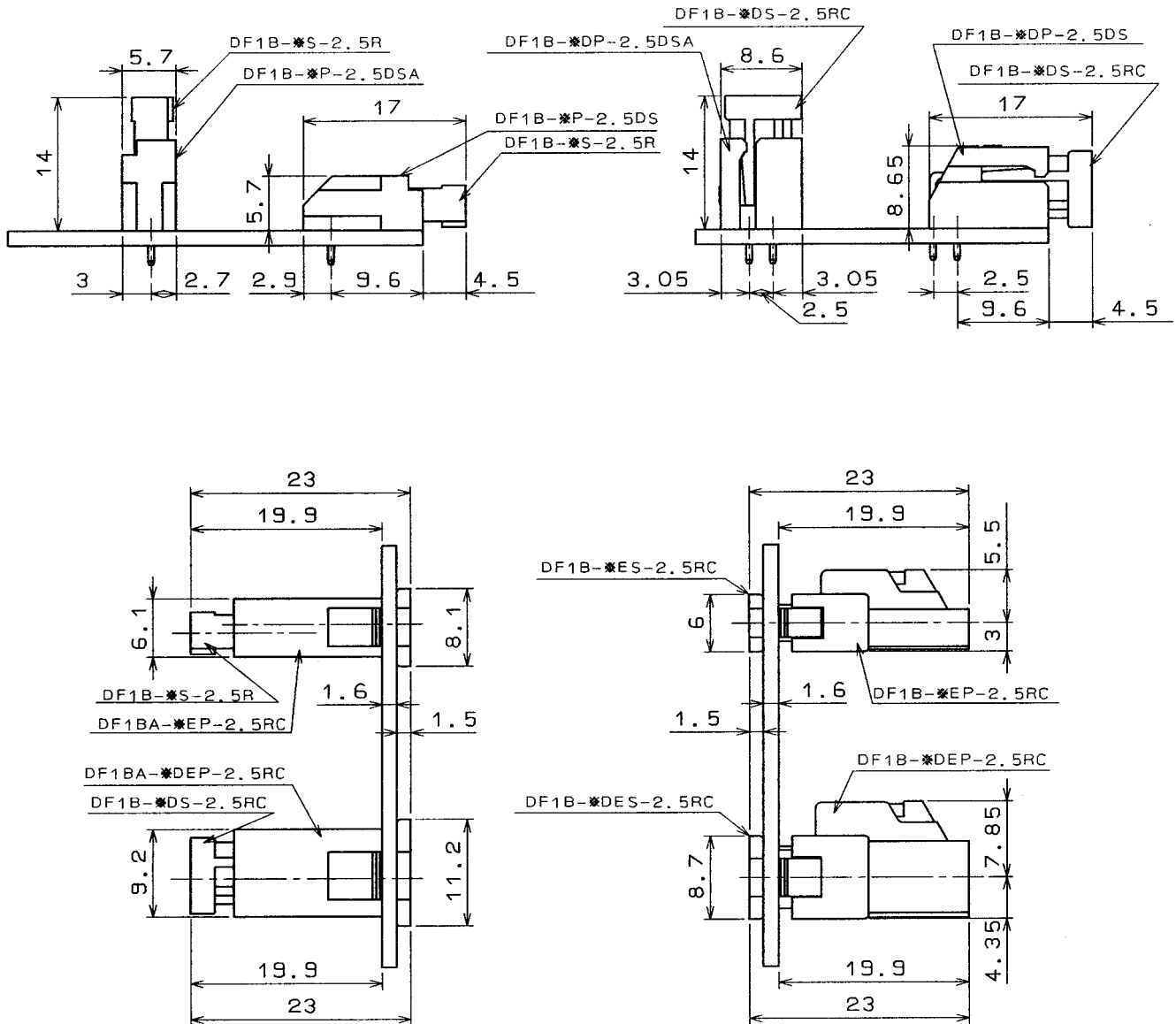
[Manual Crimping Tool]

Connection Type	Type	Product No.	HRS No.	Applicable Contacts
ID	Applicator	AP105-DF1B-R	CL901-4507-4	DF1B-R**F/FA **=24,26,28
		AP105-DF1B-PR	CL901-4536-2	DF1B-**PRF/PRFB**=24,26,28
	Manual ID tool	DF1B-T2428HR	CL550-0171-0	DF1B-R**/A **=24,26,28
		DF1B-T2428PHR	CL550-0221-7	DF1B-**PR/PRB **=24,26,28
Crimping	Applicator	AP105-DF1B-2022S	CL901-4510-9	DF1B-2022SCF/SCFA
		AP105-DF1B-2428S	CL901-4518-0	DF1B-2428SCF/SCFA
		AP105-DF1B-30S	CL901-4517-8	DF1B-30SCF/SCFA
		AP105-DF1B-2022P	CL901-4509-0	DF1B-2022PCF/PCFB
		AP105-DF1B-2428P	CL901-4521-5	DF1B-2428PCF,DF1-PD2428SCF/SCFB
		AP105-DF1B-30P	CL901-4519-3	DF1B-30PCF/PCFB
	Manual crimping tool	DF1B-TA2022SHC	CL550-0182-7	DF1B-2022SC/SCA
		DF1B-TA2428SHC	CL550-0209-1	DF1B-2428SC/SCA
		DF1B-TA30SHC	CL550-0211-3	DF1B-30SC/SCA
		DF1B-TA2022PHC	CL550-0183-0	DF1B-2022PC/PCB
		DF1B-TA2428PHC	CL550-0224-5	DF1B-2428PC,DF1-PD2428SCB
		DF1B-TA30PHC	CL550-0210-0	DF1B-30PC/PCB
Press Main Unit	CM-105	CL901-0005-4	_____	
Extraction Tool	DF-C-PO(A)	CL550-0170-8	DF1B-R**F	
	DF-C-PO(B)	CL550-0179-2	DF1B-****SCF	
	DF-C-PO(C)	CL550-0198-7	DF1B-****PC,DF1B-**PRF	

Note: If a trouble has occurred due to tools which are not designated by Hirose, Hirose won't guarantee any product



## ◆ Applicable Tool



## ◆ Precautions for Use

1. Recommended Soldering Condition	<ul style="list-style-type: none"> <li>■ Flow Condition with Automatic Solder Machine Soldering temperature: <math>250 \pm 5^\circ\text{C}</math>, Soldering time: Within 3 seconds</li> <li>■ Manual Soldering Condition Soldering iron temperature: <math>250 \pm 5^\circ\text{C}</math>, Soldering time: Within 2 seconds</li> </ul>
2. Cleaning Condition	Refer to the "Nylon Connector Instruction Manual".
3. Connection Condition	Refer to the "Nylon Connector Instruction Manual".
4. Cautions	<ul style="list-style-type: none"> <li>■ The color phase of this product is slightly different from that of the formed product according to the manufacturing lot and future storage conditions, but the difference doesn't affect the performance.</li> </ul>