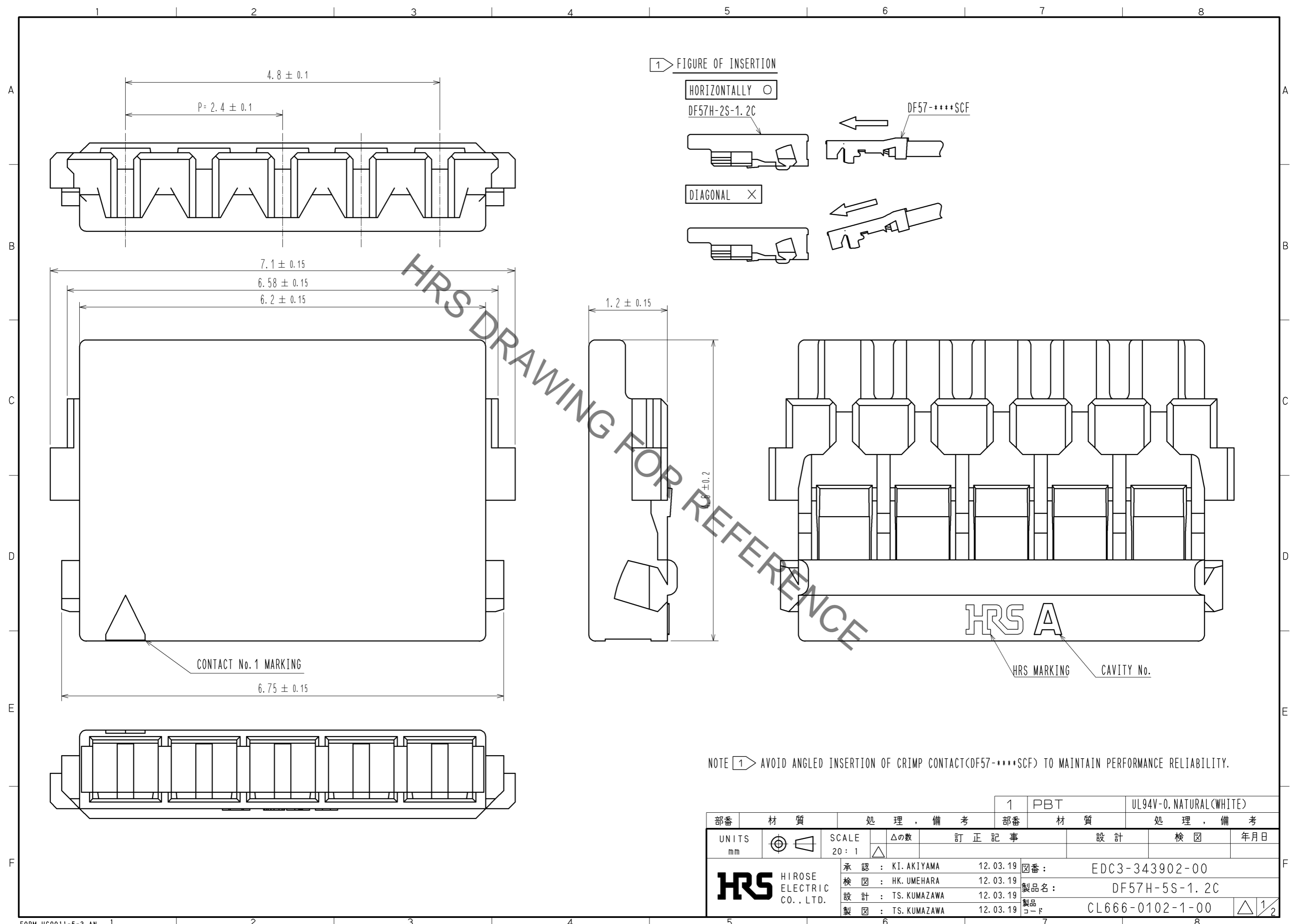


Dec.1.2019 Copyright 2019 HIROSE ELECTRIC CO., LTD. All Rights Reserved.
In case of consideration for using Automotive equipment / device which demand high reliability, kindly contact our sales window correspondents.



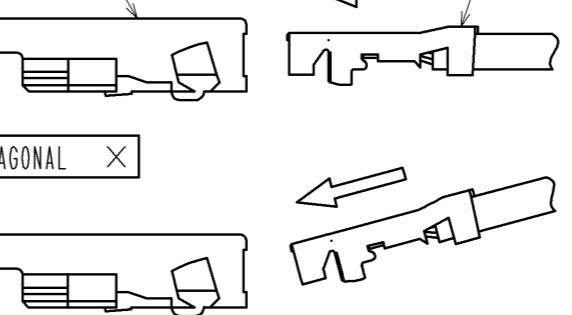
1 FIGURE OF INSERTION

HORIZONTALLY ○

DF57H-2S-1.2C

DIAGONAL ×

DF57-****SCF



1.2 ± 0.15

6.8 ± 0.2

HRS A

HRS MARKING

CAVITY No.

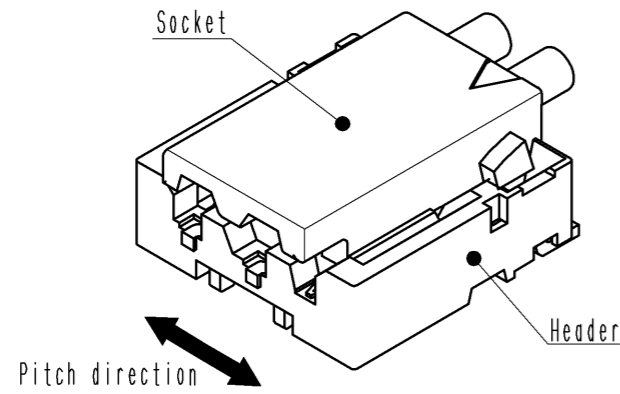
NOTE 1 AVOID ANGLED INSERTION OF CRIMP CONTACT(DF57-****SCF) TO MAINTAIN PERFORMANCE RELIABILITY.

UNITS mm		SCALE 20:1		△の数		訂正記事		設計		検図		年月日	
HRS HIROSE ELECTRIC CO., LTD.		承認: KI. AKIYAMA 12.03.19		検図: HK. UMEHARA 12.03.19		設計: TS. KUMAZAWA 12.03.19		製図: TS. KUMAZAWA 12.03.19		1 PBT		UL94V-0, NATURAL(WHITE)	
		部番		材質		処理, 備考		部番		材質		処理, 備考	
		1		PBT		UL94V-0, NATURAL(WHITE)		図番:		EDC3-343902-00		製品名:	
								製品名:		DF57H-5S-1.2C		製品コード:	
								製品コード:		CL666-0102-1-00		△ 1/2	

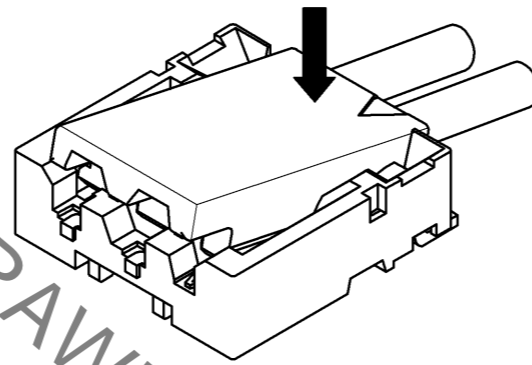
DF57 Series Mating / Unmating Operation Instruction

Mating

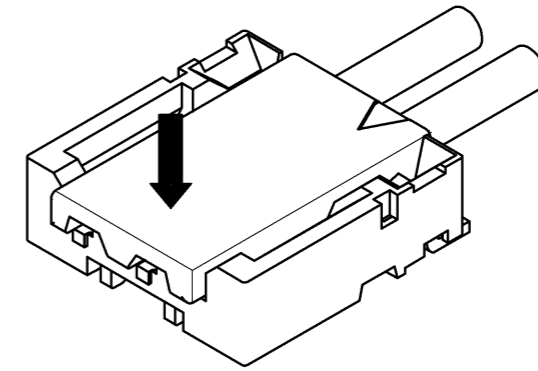
① By positioning the convexity of the socket sides to the header concavity, align the centers of the socket and the header in pitch direction.



② Slightly press the socket down at cable side to tilted angle.

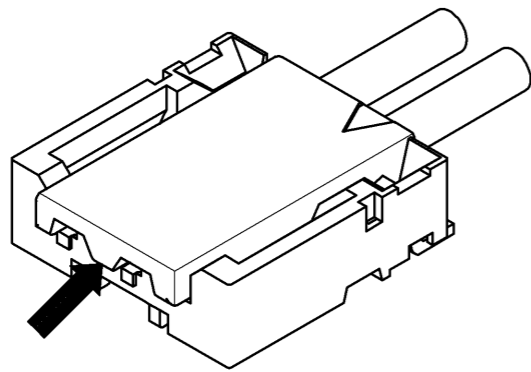


③ Press down at the lever side with stabilizing the cable side to insert. Mating completes.

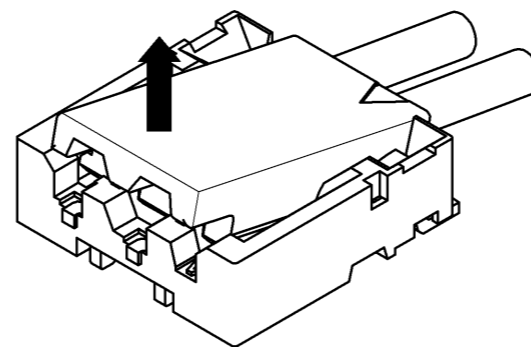


Unmating

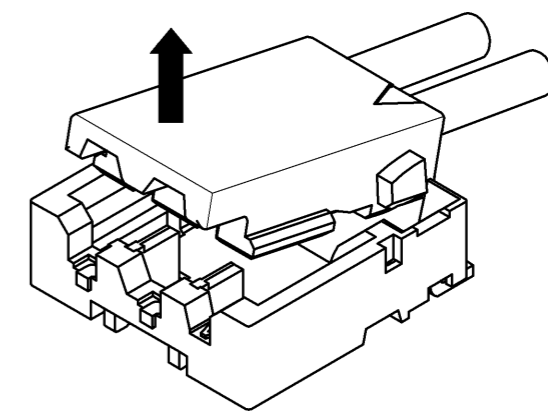
① Hook the lever with finger nail.



② Lift up to the upper direction and friction lock is released.



③ Lift up to the upper direction and positive lock is released. Removal completes.



HRS DRAWING FOR REFERENCE

HRS	DRAWING NO.	EDC3-343902-00
	PART NO.	DF57H-5S-1.2C
	CODE NO.	CL666-0102-1-00
		△ 2/2

Dec.1.2019 Copyright 2019 HIROSE ELECTRIC CO., LTD. All Rights Reserved. In case of consideration for using Automotive equipment / device which demand high reliability, kindly contact our sales window correspondents.