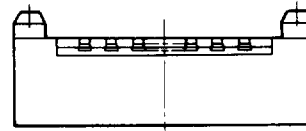
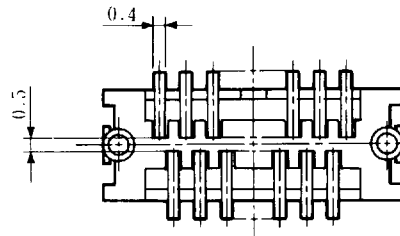
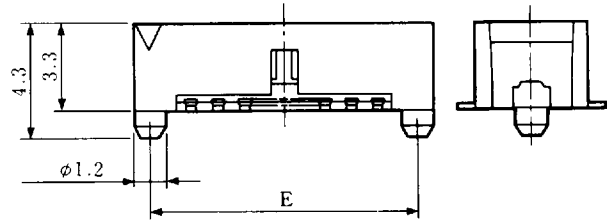
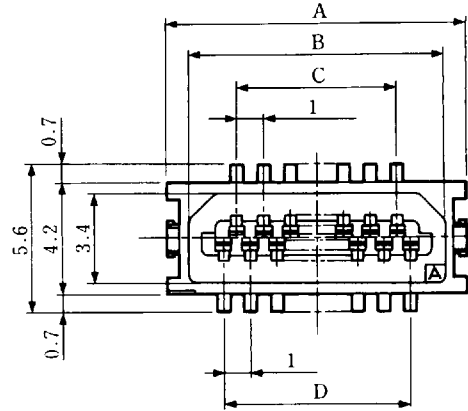
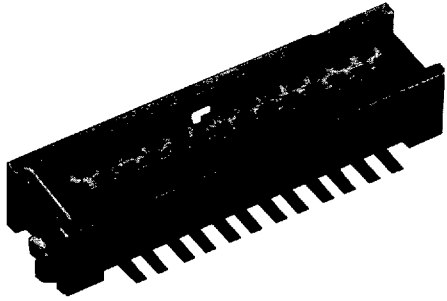


PIN HEADER

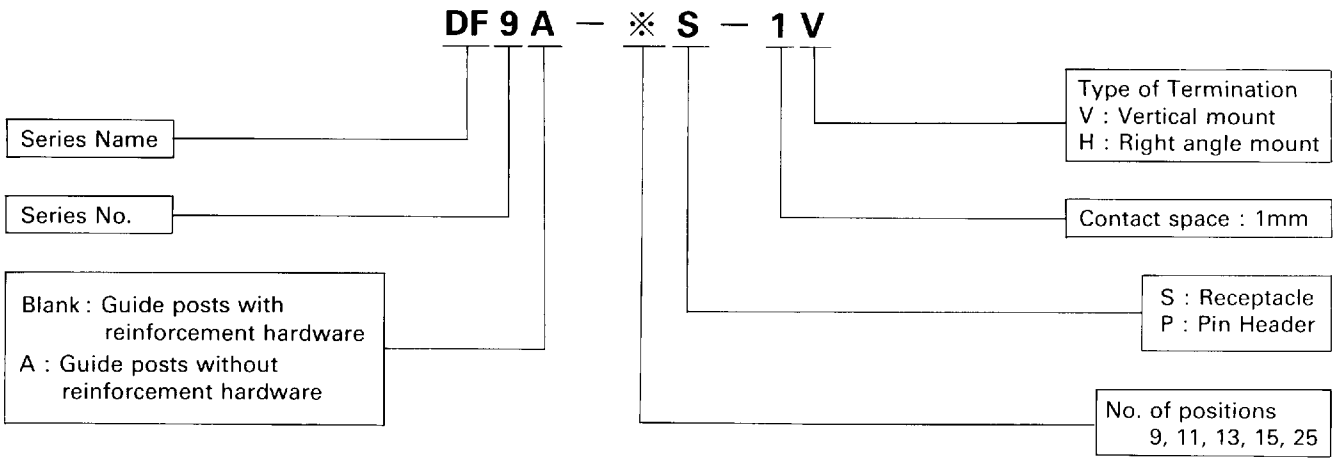


Unit: mm

HRS No.	Part No.	No. of Pin	A	B	C	D	E
CL540-0016-0	DF9A-9P-1V	9	8.3	6.6	3.0	4.0	7.1
CL540-0017-7	DF9A-11P-1V	11	9.3	7.6	4.0	5.0	8.1
CL540-0018-6	DF9A-13P-1V	13	10.3	8.6	5.0	6.0	9.1
CL540-0019-9	DF9A-15P-1V	15	11.3	9.6	6.0	7.0	10.1
CL540-0020-8	DF9A-17P-1V	17	12.3	10.6	7.0	8.0	11.1
CL540-0021-0	DF9A-19P-1V	19	13.3	11.6	8.0	9.0	12.1
CL540-0022-3	DF9A-21P-1V	21	14.3	12.6	9.0	10.0	13.1
CL540-0023-6	DF9A-23P-1V	23	15.3	13.6	10.0	11.0	14.1
CL540-0024-9	DF9A-25P-1V	25	16.3	14.6	11.0	12.0	15.1

■ ORDERING FORMAT

● RECEPTACLE / PIN HEADER



■ ELECTRICAL

Item	Specification
Current rating	0.1A
Voltage rating	150VAC
Insulation resistance	More than 500 mega-ohms at 100 VDC
Contact resistance	Less than 50 mm-ohms at 0.1A DC

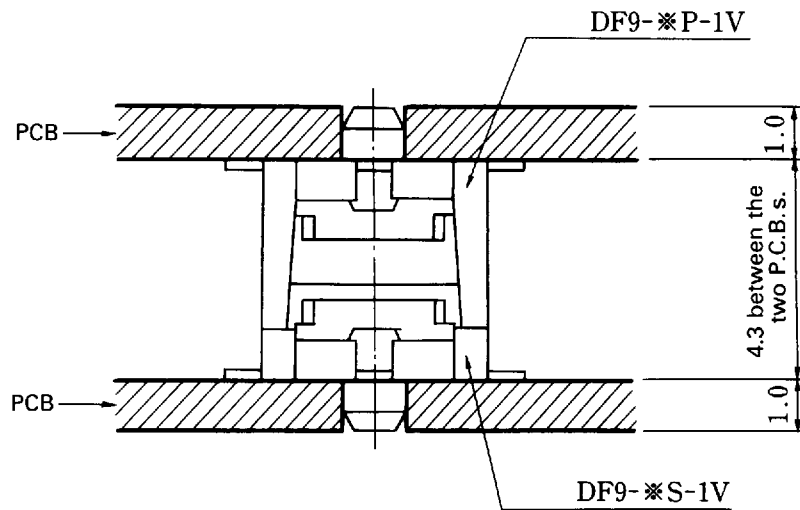
■ TEMPERATURE RATING

245 to 260 degrees centigrade for more than 10 seconds. Rated for V.P.S., IR, and Heat blow soldering methods.

■ MATERIAL

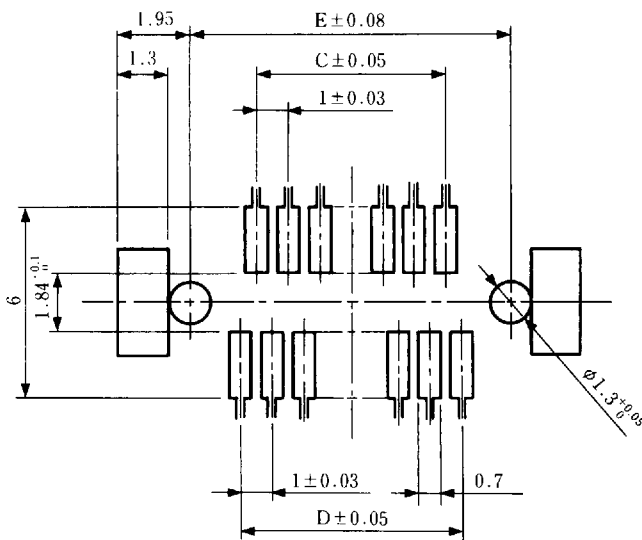
Item	Specification
Insulator	Poly-amide (UL94V-O)
Contact	Phosphor Bronze, Tin / Lead or Gold plating
Hardware	Brass, Tin plated

■ VIEW AT MATING



■ DIMENSIONAL SPEC OF P.C.B.

● DF9



● DF9A

