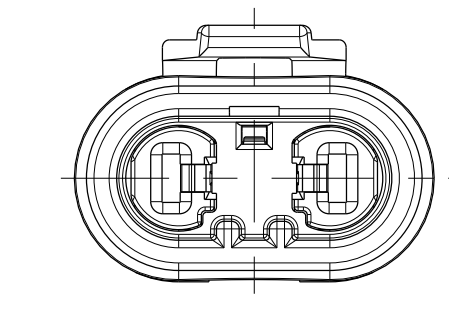
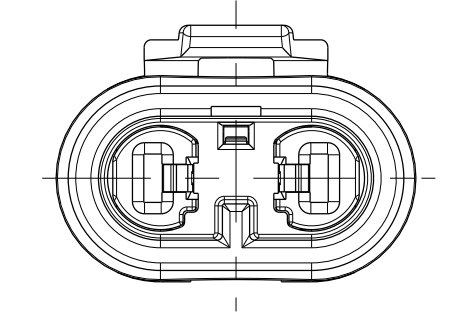
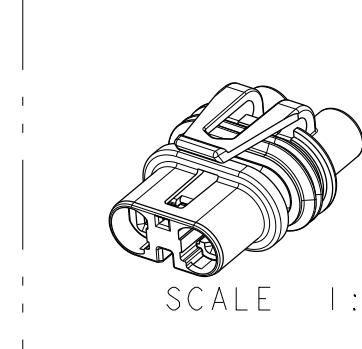
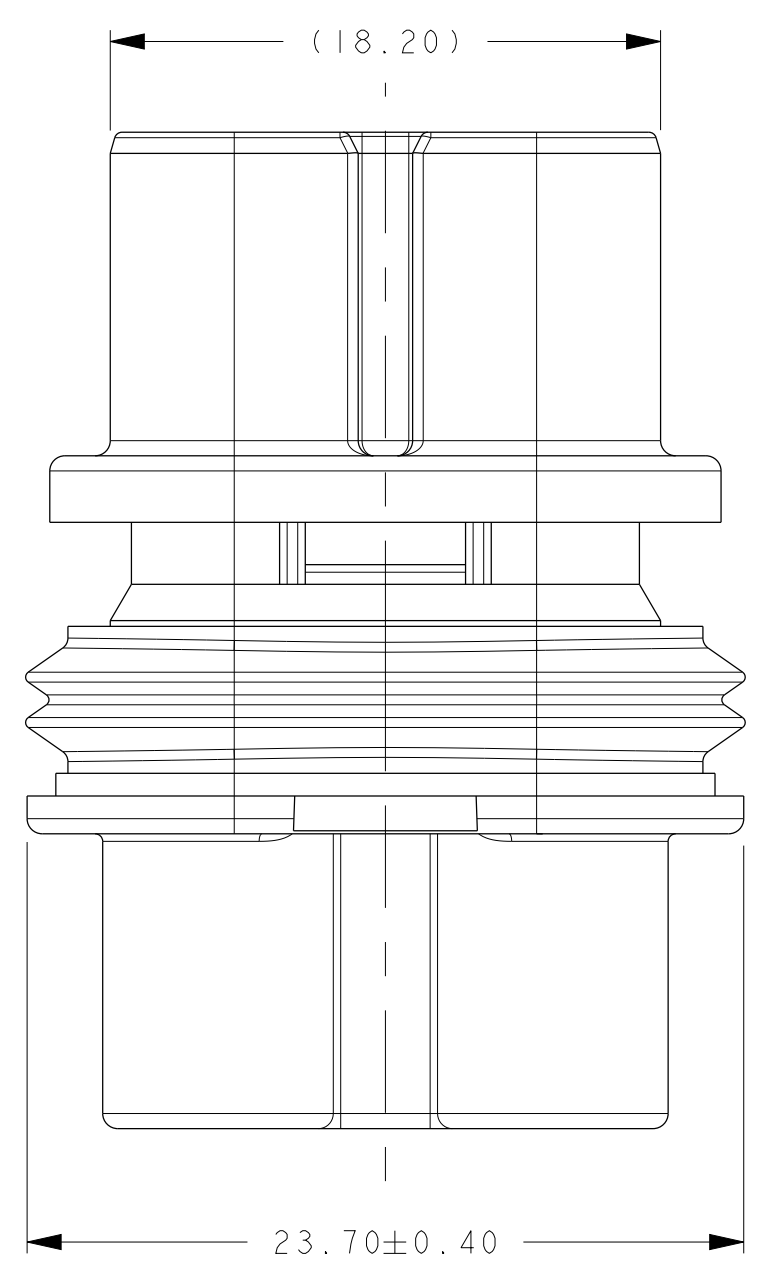
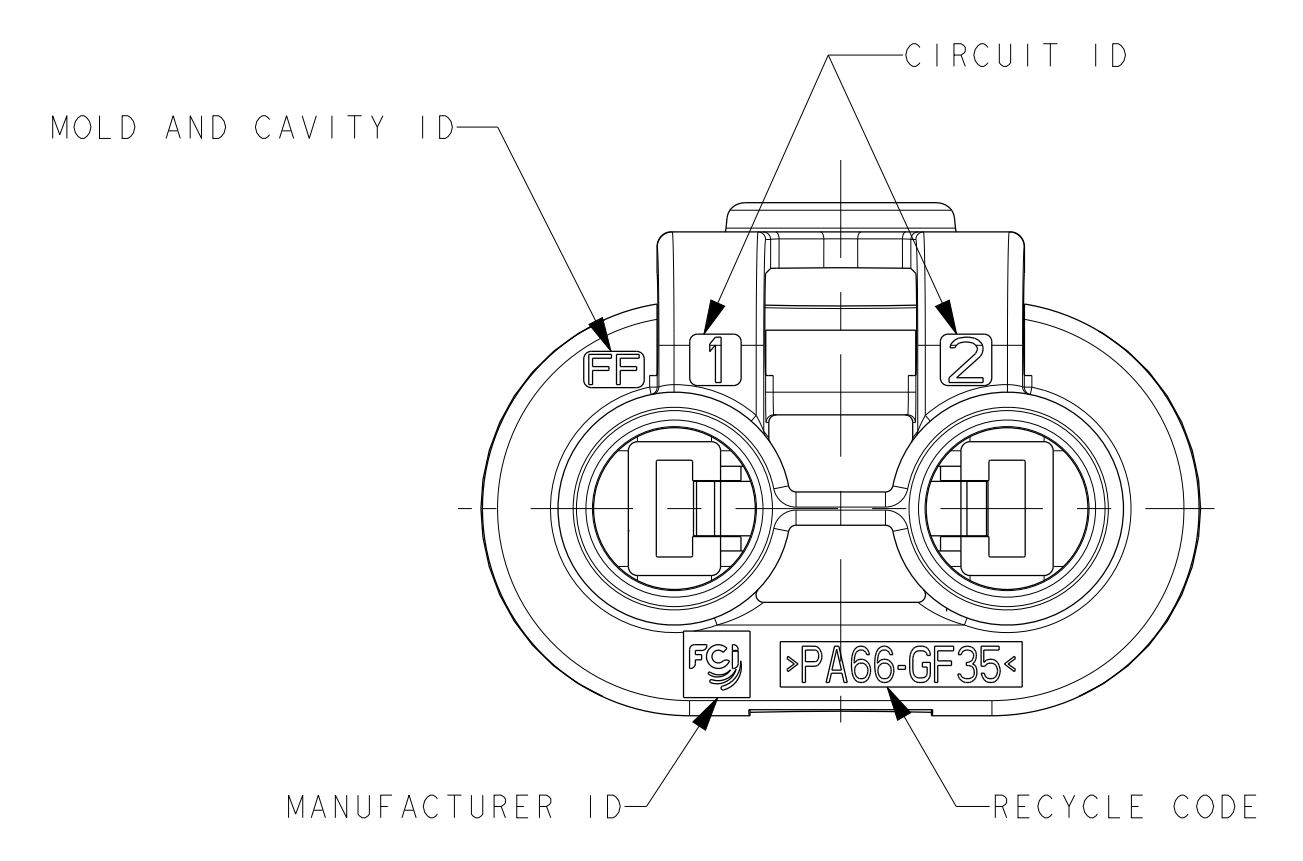
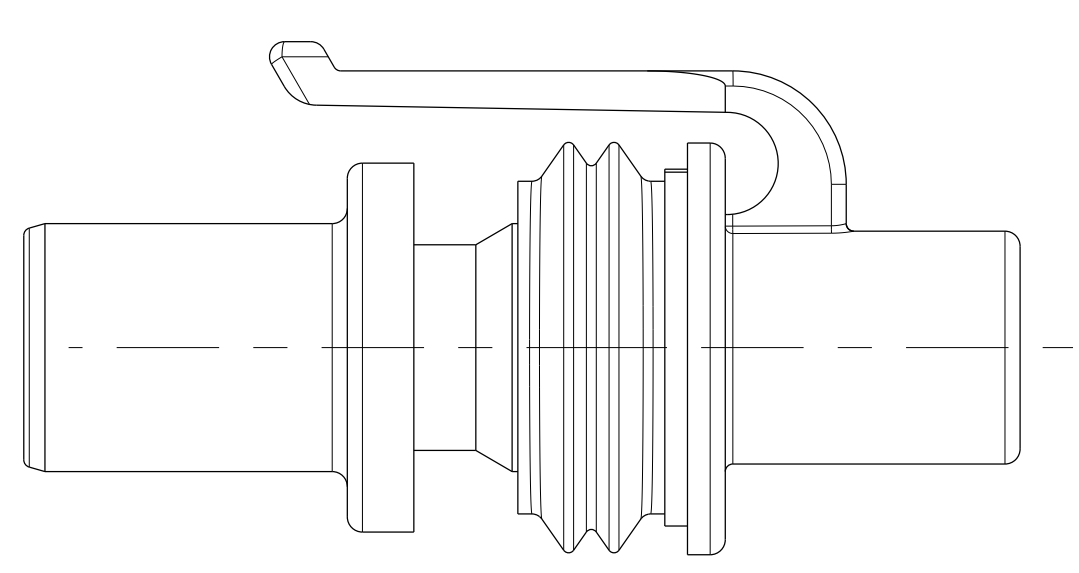
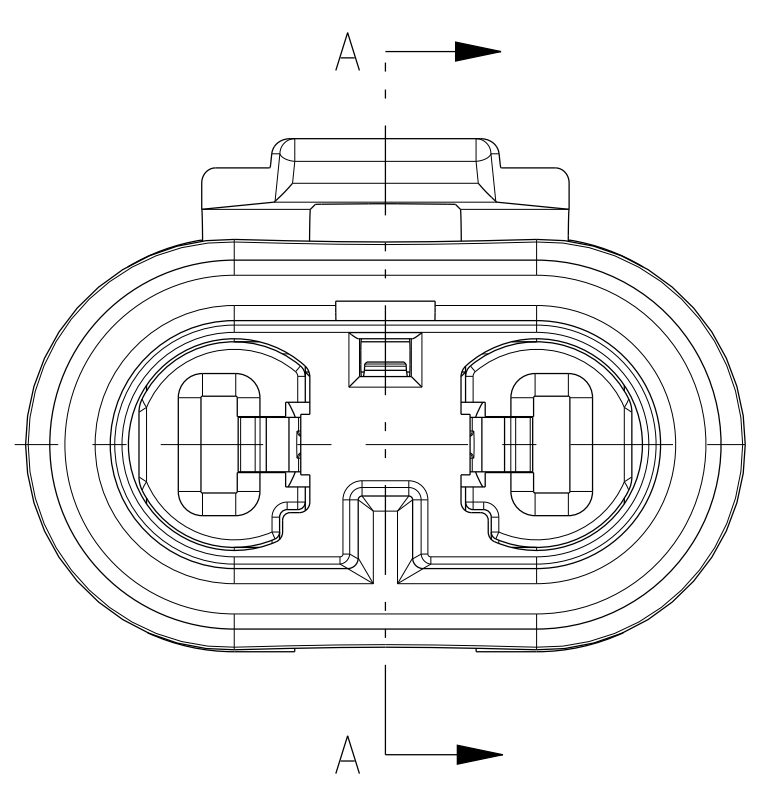
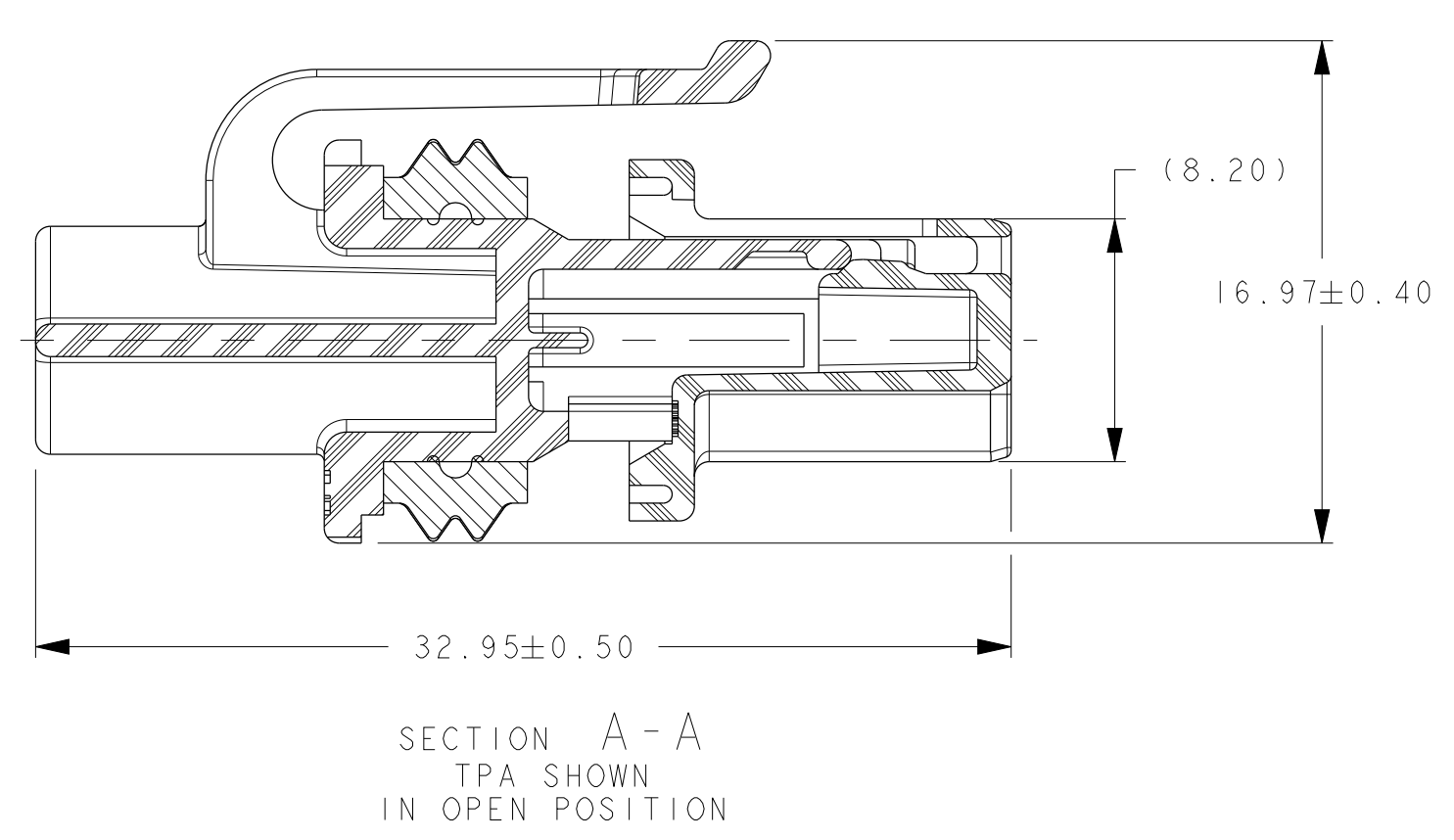
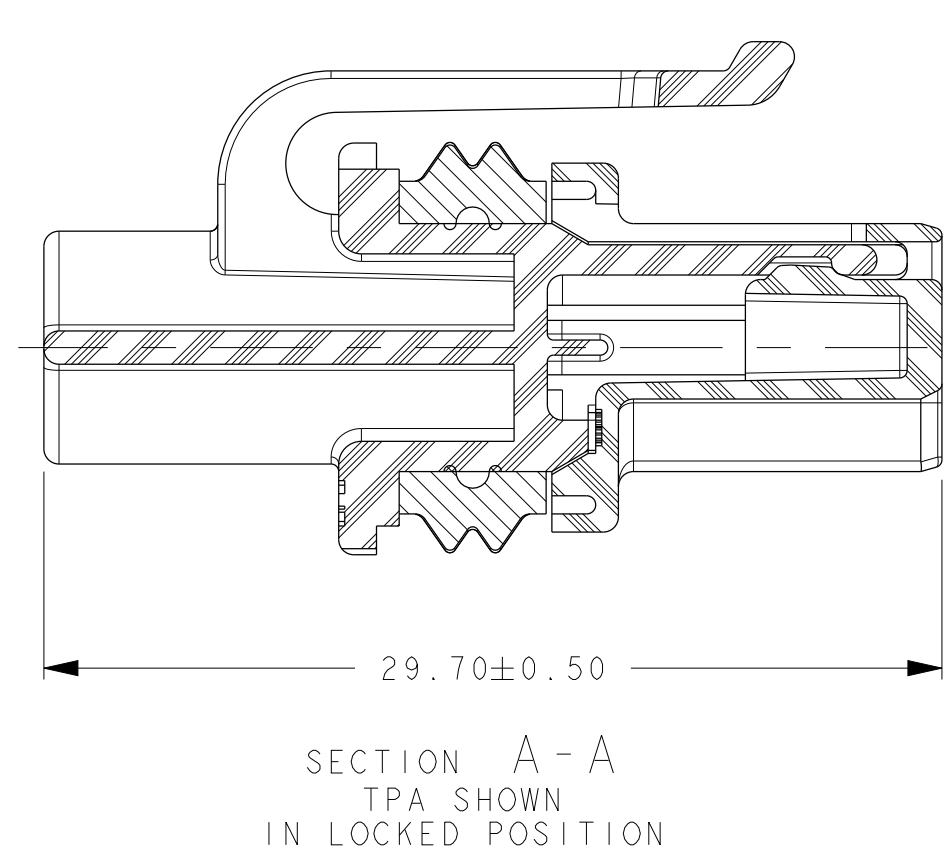
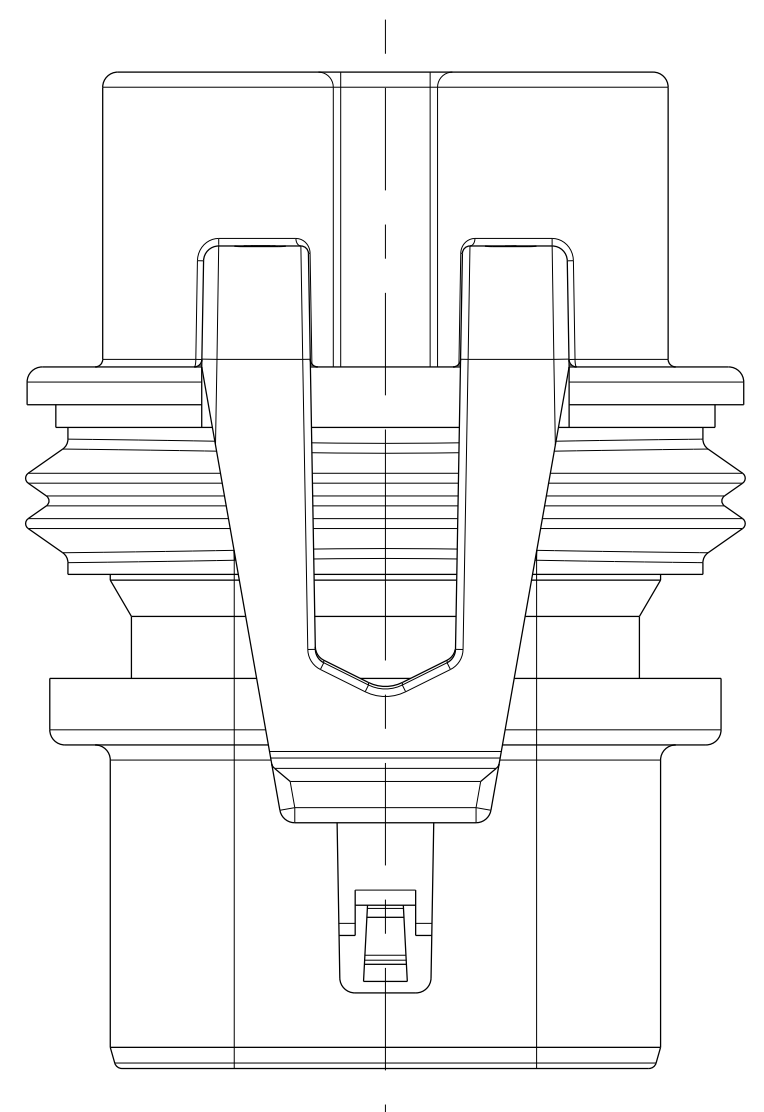


COMPONENTS LIST							
CONNECTOR PART NUMBER	CONFIGURATION	NHTSA DEFINITION (FOR REFERENCE ONLY)	CEI 60061-1 STANDARD (FOR REFERENCE ONLY)	PART NUMBERS			
				#1 TPA	#1 TPA COLOR	#2 HOUSING (BLACK)	#3 SEAL (BLUE)
F412210	HIR2 (9012) HB4 (9006) HB4A (9006XS)	NHTSA-1998-3397-0003 NHTSA-1998-3397-0013 NHTSA-1998-3397-0001	7004-32-2	F612210	DARK GRAY	F512210	240M041
				F908310	LT GRAY		
	HB3 (9005) HB3A (9005XS) HIR1 (9011) H12 (9055) H10 (9145)	NHTSA-1998-3397-0012 NHTSA-1998-3397-0001 NHTSA-1998-3397-0002 ---- ----	7004-31-2	F257210			

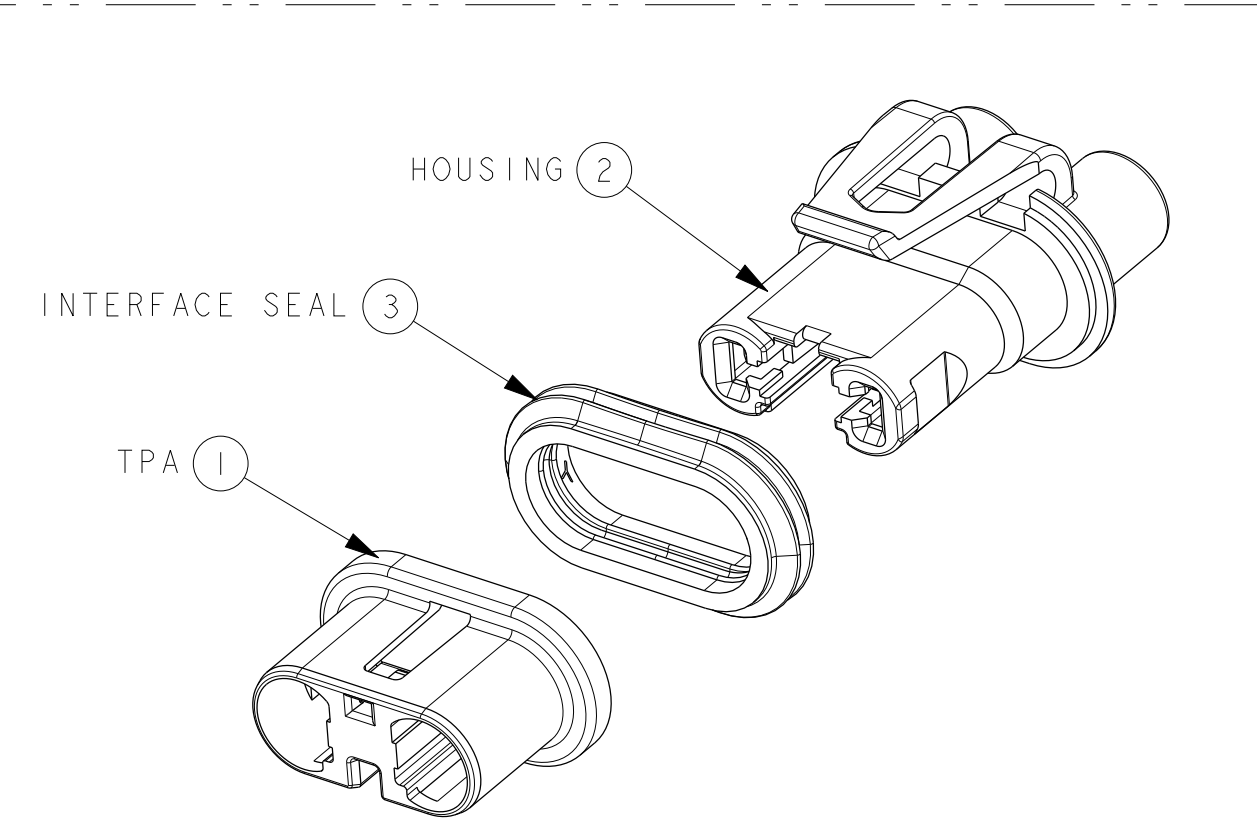
APPLICABLE COMPONENTS									
ITEM DESCRIPTION	PLATING OR COLOR	FORD COMP PART NUMBER	SUPPLIER	FCI / SUPPLIER PART NUMBER	GRIP CODE	WIRE SIZE	WIRE INSULATION DIAMETER RANGE	MATERIAL	
APEX 2.8 FEMALE TERMINAL	SILVER	-	FCI	F820310	14	14 AWG 1.50-2.50mm <sup>2</sup>	2.20mm-3.00mm	COPPER ALLOY	
2.80mm SYSTEM CABLE SEAL ROUND	BLUE	8U5T-14603-NA	FCI (OSR)	F576000	-	14 AWG 1.50-2.0mm <sup>2</sup>	2.20mm-2.80mm	SILICONE	
2.80mm SYSTEM CABLE SEAL ROUND	YELLOW	BU5T-10C930-HA	FCI	60994034	-	2.5mm <sup>2</sup>	2.70mm-3.00mm	SILICONE	



POLARIZATION OPTIONS



- NOTES UNLESS OTHERWISE SPECIFIED:
- BULB HEATING EFFECT IN LIGHTING APPLICATIONS MUST BE CONSIDERED BY THE SPECIFYING PARTY AS TO APPROPRIATE WIRE, CABLE SEAL AND TERMINAL SELECTION AND FOR EACH LIGHTING SYSTEM'S VALIDATION TESTING. USE OF LARGEST CONDUCTOR WIRE WITH 150°C RATING IS STRONGLY RECOMMENDED IN ALL BULB OR OTHER SELF-HEATING APPLICATIONS.
  - TEST METHOD PER: GMW3191 V1 / S3 / T4 (150°C) MATED WITH SILVER PLATED TERMINAL PHILIPS HIR2 BULB PN# 928207417922 (GM PN# 13587719) UNPOWERED (BULB HEATING EFFECT NOT INCLUDED) WITH THE FOLLOWING EXCEPTIONS:
    - GMW3191 4.29 SUBMERSION: @185°C
    - GMW3191 4.21 THERMAL AGING: CONNECTOR @150°C, BULB ENVELOPE @100°C, 2000 HOURS, 9012HIR2 BULB POWERED @13.0VDC
    - SEAL TESTING TO: USCAR-2 REV 5 SEC W 125°C (PRESSURE/VACUUM STAND ALONE)
  - CONNECTOR TO BE USED WITH THE FOLLOWING RANGE OF WIRE SIZES AND TYPES:
    - WIRE SIZES: 1.50mm<sup>2</sup> - 2.50mm<sup>2</sup> AND 14 AWG
    - OUTSIDE DIAMETER: 2.20MM MIN O.D. TO 3.00MM MAX O.D.
    - TYPE/STANDARD: MS-9502, ES-AUST-1A348-AA Class 4, ISO6722 Class D
    - TEMP RATING: 150°C MINIMUM
    - CONTACT FCI ENGINEERING REGARDING USE OF OTHER WIRE SIZES OR TYPES. SEE NOTE #1.
  - SEE FCI DRAWING CI15004-CUST FOR TERMINAL CRIMPING REQUIREMENTS.
  - CONNECTOR IS MATE COMPATIBLE WITH BULBS/INTERFACES WHICH CONFORM TO THE STANDARDS SHOWN IN THE CHART.
  - ANNUAL QUALITY REQUIREMENTS: IT IS PERMISSIBLE TO PERFORM CONTINUOUS CONFORMANCE PER FCI SPECIFICATION AQA-001 INSTEAD OF ANNUAL LAYOUT AND ANNUAL PV REQUIREMENTS OF QS-9000 SECTION 2 AND SAE/USCAR-2.



NOTES		NOTE #2 REVISED	
EON 12-01208 WAS A1 SIZE FORMAT			
CHART ADDED CONFIGURATION AND NHTSA DEFINITION NUMBERS TO COMPONENTS LIST			
REV	DATE	DESCRIPTION	BY
1	12/01/2008	ISSUE FOR PRODUCTION	FCI
2	12/01/2008	REVISION TO ADD CONFIGURATION AND NHTSA DEFINITION NUMBERS TO COMPONENTS LIST	FCI
3	12/01/2008	REVISION TO ADD CIRCUIT ID AND RECYCLE CODE TO DRAWING	FCI
4	12/01/2008	REVISION TO ADD MOLD AND CAVITY ID TO DRAWING	FCI
5	12/01/2008	REVISION TO ADD MANUFACTURER ID TO DRAWING	FCI
6	12/01/2008	REVISION TO ADD RECYCLE CODE TO DRAWING	FCI
7	12/01/2008	REVISION TO ADD TPA TO DRAWING	FCI
8	12/01/2008	REVISION TO ADD INTERFACE SEAL TO DRAWING	FCI
9	12/01/2008	REVISION TO ADD HOUSING TO DRAWING	FCI
10	12/01/2008	REVISION TO ADD EXPLODED VIEW TO DRAWING	FCI
11	12/01/2008	REVISION TO ADD SECTION A-A TO DRAWING	FCI
12	12/01/2008	REVISION TO ADD DIMENSIONS TO DRAWING	FCI
13	12/01/2008	REVISION TO ADD TOLERANCES TO DRAWING	FCI
14	12/01/2008	REVISION TO ADD FINISHES TO DRAWING	FCI
15	12/01/2008	REVISION TO ADD MATERIALS TO DRAWING	FCI
16	12/01/2008	REVISION TO ADD PART NUMBERS TO DRAWING	FCI
17	12/01/2008	REVISION TO ADD STANDARD TO DRAWING	FCI
18	12/01/2008	REVISION TO ADD TITLE TO DRAWING	FCI
19	12/01/2008	REVISION TO ADD PART NUMBER TO DRAWING	FCI
20	12/01/2008	REVISION TO ADD DRAWING NUMBER TO DRAWING	FCI
21	12/01/2008	REVISION TO ADD SHEET NUMBER TO DRAWING	FCI
22	12/01/2008	REVISION TO ADD SCALE TO DRAWING	FCI
23	12/01/2008	REVISION TO ADD TITLE BLOCK TO DRAWING	FCI