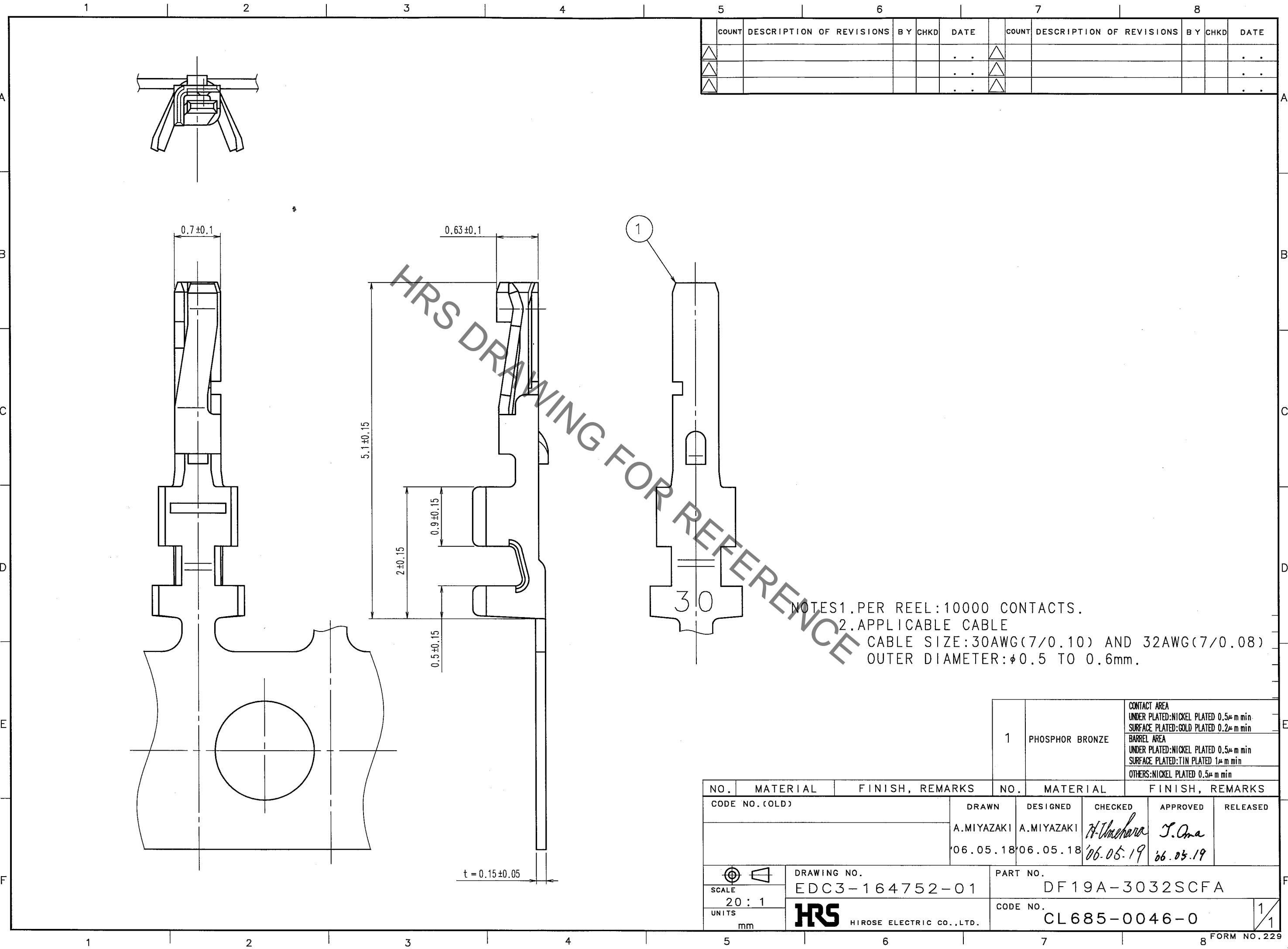


Jun.1.2019 Copyright 2019 HIROSE ELECTRIC CO., LTD. All Rights Reserved.
In case of consideration for using Automotive equipment / device which demand high reliability, kindly contact our sales window correspondents.



COUNT	DESCRIPTION OF REVISIONS	BY	CHKD	DATE	COUNT	DESCRIPTION OF REVISIONS	BY	CHKD	DATE
△				. .	△				. .
△				. .	△				. .
△				. .	△				. .

NOTES
 1. PER REEL: 10000 CONTACTS.
 2. APPLICABLE CABLE
 CABLE SIZE: 30AWG(7/0.10) AND 32AWG(7/0.08)
 OUTER DIAMETER: $\phi 0.5$ TO 0.6 mm.

TO

1	PHOSPHOR BRONZE	CONTACT AREA UNDER PLATED: NICKEL PLATED $0.5 \mu\text{m min}$ SURFACE PLATED: GOLD PLATED $0.2 \mu\text{m min}$
		BARREL AREA UNDER PLATED: NICKEL PLATED $0.5 \mu\text{m min}$ SURFACE PLATED: TIN PLATED $1 \mu\text{m min}$
		OTHERS: NICKEL PLATED $0.5 \mu\text{m min}$

NO.	MATERIAL	FINISH, REMARKS	NO.	MATERIAL	FINISH, REMARKS

CODE NO. (OLD)	DRAWN	DESIGNED	CHECKED	APPROVED	RELEASED
	A.MIYAZAKI	A.MIYAZAKI	<i>H. Umehara</i>	<i>T. Oma</i>	
	'06.05.18	'06.05.18	'06.05.19	'06.05.19	

SCALE	DRAWING NO.	PART NO.
20 : 1	EDC3-164752-01	DF19A-3032SCFA
UNITS	CODE NO.	
mm	CL685-0046-0	