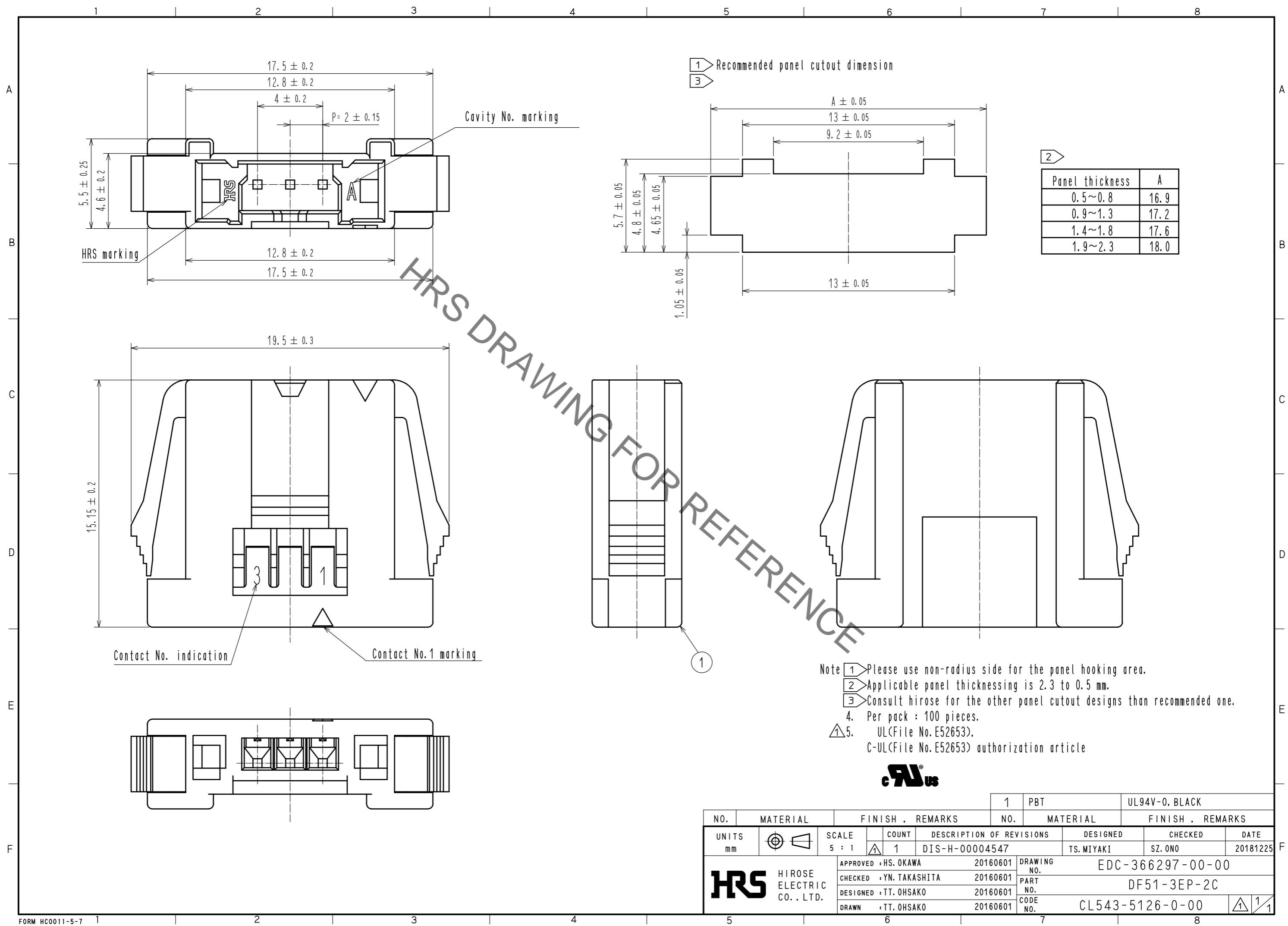


Jun.1.2019 Copyright 2019 HIROSE ELECTRIC CO., LTD. All Rights Reserved.
In case of consideration for using Automotive equipment / device which demand high reliability, kindly contact our sales window correspondents.



- Note
- 1 Please use non-radius side for the panel hooking area.
 - 2 Applicable panel thicknessing is 2.3 to 0.5 mm.
 - 3 Consult hirose for the other panel cutout designs than recommended one.
 4. Per pack : 100 pieces.
 5. UL<File No. E52653>.
C-UL<File No. E52653> authorization article



NO.		MATERIAL		FINISH . REMARKS		NO.		MATERIAL		FINISH . REMARKS	
		1		PBT				UL94V-0. BLACK			
UNITS	mm	SCALE	5 : 1	COUNT	1	DESCRIPTION OF REVISIONS		DESIGNED	TS. MIYAKI	CHECKED	SZ. ONO
						DIS-H-00004547				DATE	
										20181225	
						APPROVED : HS. OKAWA		20160601		DRAWING NO.	
						CHECKED : YN. TAKASHITA		20160601		EDC-366297-00-00	
						DESIGNED : TT. OHSAKO		20160601		PART NO.	
						DRAWN : TT. OHSAKO		20160601		DF51-3EP-2C	
										CODE NO.	
										CL543-5126-0-00	
										1/1	