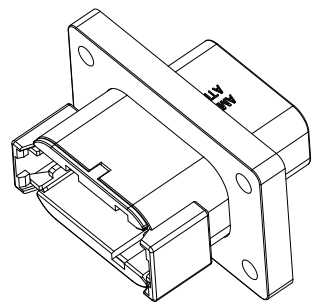
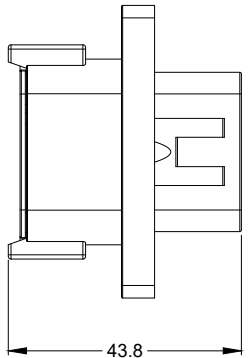
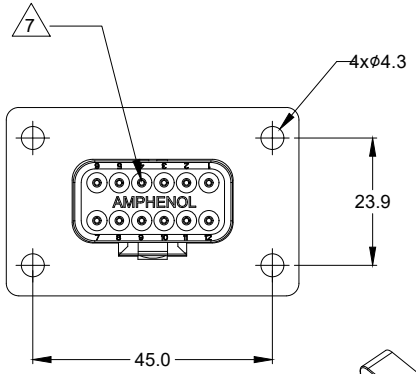
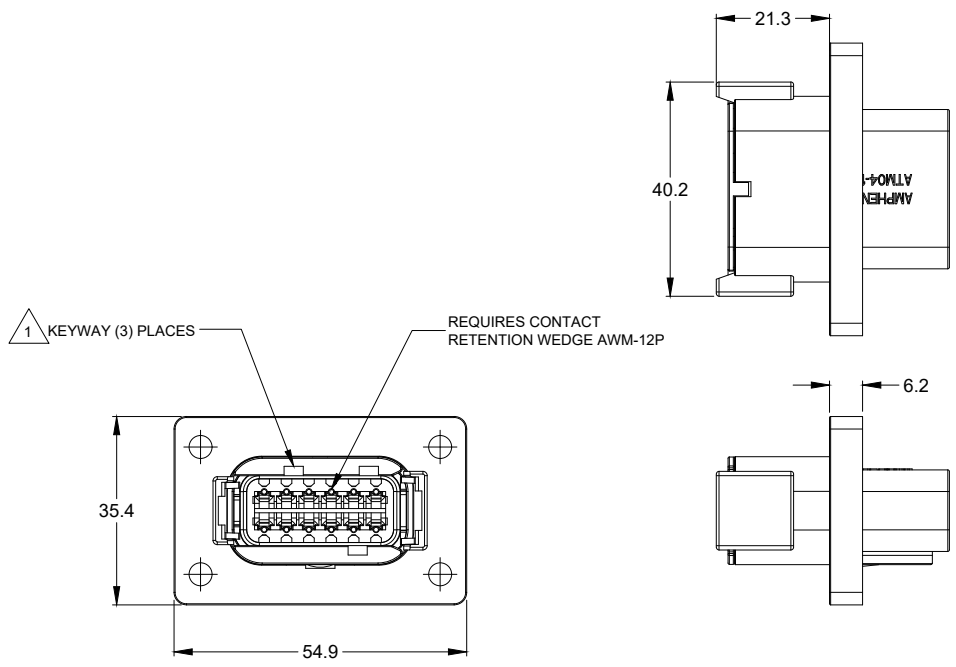


REVISIONS					
REV	ECO	DESCRIPTION	DATE	BY	APPR
A1		RELEASE NUMBER	20/NOV/17	ROOKIE	TOMMY



NOTES: UNLESS OTHERWISE SPECIFIED

1 SEE SHEET 2 FOR KEY ARRANGEMENTS AND COLORS.

2. MATERIAL:
HOUSING: THERMOPLASTIC
SEAL: SILICONE RUBBER

3. MODIFICATIONS: FLANGE

4. SPECIFICATIONS:
4.1 CURRENT RATING: 7.5 AMPS
4.2 OPERATING TEMPERATURE: -55°C TO +125°C.
4.3 DIELECTRIC WITHSTANDING VOLTAGE: LESS THAN 2 MILLIAMPS CURRENT LEAKAGE @ 1500 VOLTS AC.
4.4 INSULATION RESISTANCE: 1000 MEGOHMS MIN @ 25°C.
4.5 MOISTURE RESISTANCE: IP67 (MATED CONDITION)
4.6 MATING CYCLE DURABILITY: 100 CYCLES
4.7 RoHS COMPLIANT

5. MATING PART: ATM06-12SX* PLUG.
(X = A,B,C,D KEYS; * = MODIFICATIONS AND COLORS)

6. ALL DIMENSIONS ARE FOR REFERENCE USE ONLY.

7 CONTACT SIZE AND REAR SEAL WIRE RANGE:

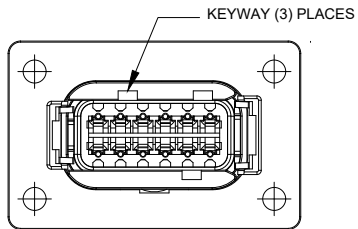
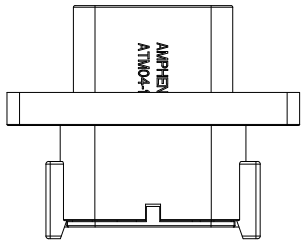
CONTACT SIZE	MIN. INSUL O.D.	MAX. INSUL O.D.	TYPICAL WIRE RANGE
20	1.35 mm (.053 in)	3.05 mm (.120 in)	16 - 22 AWG

QUANTITY	PART NUMBER	DESCRIPTION	ITEM
MATERIALS LIST			
UNLESS OTHERWISE SPECIFIED: 1) All dimensions are in metric(mm). 2) Tolerances are as follows: 1 PL DEC ±0.30 Fractions ±1/64 2 PL DEC ±0.15 Angles ±1° 3 PL DEC ±0.08		SIGNATURES DATE DRAWN: ROOKIE 20/NOV/17 CHECKED: ORION 20/NOV/17 ENGINEER: APPROVAL: TOMMY 20/NOV/17	
MATERIAL SPECIFICATIONS:		CUSTOMER: Sine Systems - www.amphenol-sine.com 44724 Morley Drive Clinton Township, MI 48036	
PROCESS SPECIFICATIONS:		THIS DRAWING IS SUPPLIED FOR INFORMATION ONLY. DESIGN FEATURES, SPECIFICATIONS AND PERFORMANCE DATA SHOWN HEREON ARE THE PROPERTY OF THE AMPHENOL CORPORATION. NO RIGHTS OF REPRODUCTION ARE IMPLIED. ALL DIMENSIONS ARE SUBJECT TO NORMAL MANUFACTURING VARIATIONS.	
NEXT ASSY:		SIZE: B C-	REVISION: A1
		SCALE: NONE	SHEET 1 OF 2

TITLE: RECEPTACLE KEYPED A, 12 PIN, ATM SERIES,PANEL MOUNT
DWG NO.: ATM04-12PX-PM01
REV: A1
SH: 1
OF: 3

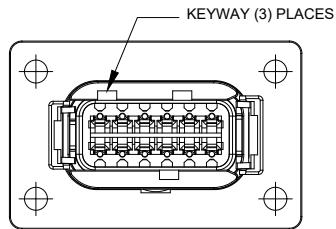
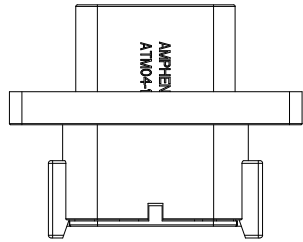
REVISIONS					
REV	ECO	DESCRIPTION	DATE	BY	APPR

KEY A CONFLGURATION
STANDARD COLOR:GREY



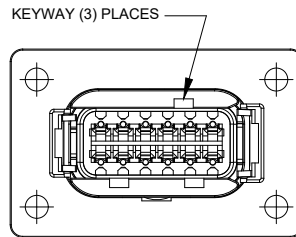
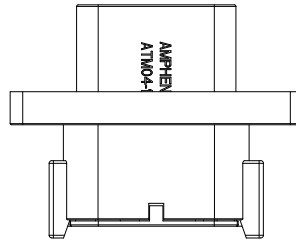
KEY-A CONFIGURATION	
COLOR	PART NUMBER
GREY	ATM04-12PA-PM01

KEY B CONFLGURATION
STANDARD COLOR:BLACK



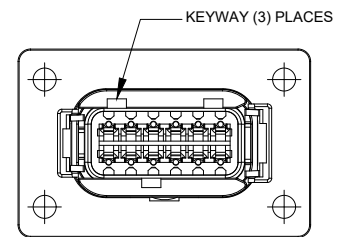
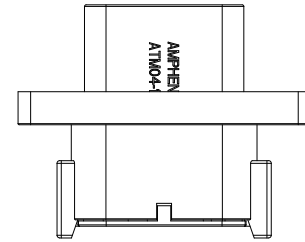
KEY-B CONFIGURATION	
COLOR	PART NUMBER
BLACK	ATM04-12PB-PMGRY

KEY C CONFLGURATION
STANDARD COLOR:GREEN



KEY-C CONFIGURATION	
COLOR	PART NUMBER
GREEN	ATM04-12PC-PM01

KEY D CONFLGURATION
STANDARD COLOR:BROWN

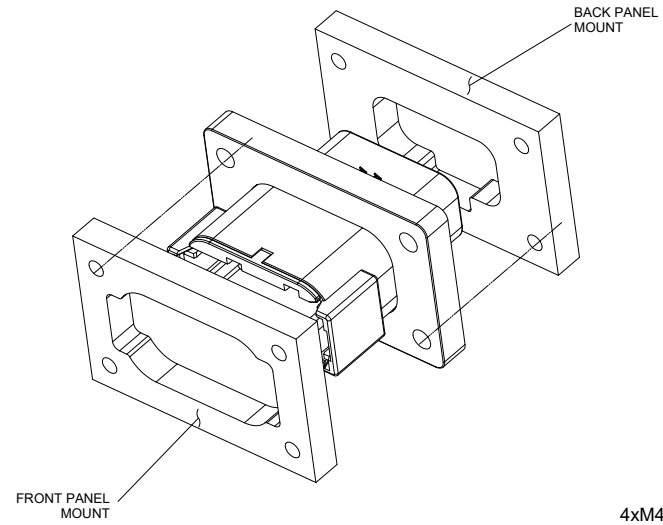


KEY-D CONFIGURATION	
COLOR	PART NUMBER
BROWN	ATM04-12PD-PM01

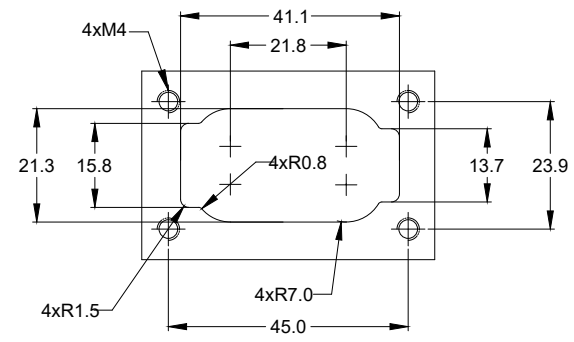
TITLE: RECEPTACLE KEYPED A, 12 PIN, ATM SERIES,PANEL MOUNT
DWG NO.: ATM04-12PX-PM01
REV: A1
SH: 2
OF: 3

PART NUMBER		DESCRIPTION		ITEM																																										
<table border="1"> <thead> <tr> <th>QUANTITY</th> <th colspan="4">MATERIALS LIST</th> </tr> </thead> <tbody> <tr> <td rowspan="4"> <small>UNLESS OTHERWISE SPECIFIED</small> 1) All dimensions are in metric(mm). 2) Tolerances are as follows: 1 PL DEC ±0.30 Fractions ±1/64 2 PL DEC ±0.15 Angles ±1° 3 PL DEC ±0.08 3) Note reference = </td> <td><small>SIGNATURES</small></td> <td><small>DATE</small></td> <td colspan="2" rowspan="4"> <div style="text-align: center;"> <h1>Amphenol</h1> <p>Sine Systems - www.amphenol-sine.com 44724 Morley Drive Clinton Township, MI 48036</p> </div> </td> </tr> <tr> <td><small>DRAWN:</small> ROOKIE</td> <td>20/NOV/17</td> </tr> <tr> <td><small>CHECKED:</small> ORION</td> <td>20/NOV/17</td> </tr> <tr> <td><small>ENGINEER:</small></td> <td></td> </tr> <tr> <td><small>APPROVAL:</small> TOMMY</td> <td>20/NOV/17</td> <td><small>CUSTOMER:</small></td> <td colspan="2">RECEPTACLE, KEYPED, 12 PIN, ATM SERIES,PANEL MOUNT</td> </tr> <tr> <td><small>MATERIAL SPECIFICATIONS:</small></td> <td colspan="2"><small>THIS DRAWING IS SUPPLIED FOR INFORMATION ONLY. DESIGN FEATURES, SPECIFICATIONS AND PERFORMANCE DATA SHOWN HEREON ARE THE PROPERTY OF THE AMPHENOL CORPORATION. NO RIGHTS OF REPRODUCTION ARE IMPLIED. ALL DIMENSIONS ARE SUBJECT TO NORMAL MANUFACTURING VARIATIONS.</small></td> <td><small>SIZE</small></td> <td><small>TYPE</small></td> <td><small>DWG NO.</small></td> <td><small>REVISION</small></td> </tr> <tr> <td><small>PROCESS SPECIFICATIONS:</small></td> <td colspan="2"></td> <td>B</td> <td>C-</td> <td>ATM04-12PX-PM01</td> <td>A1</td> </tr> <tr> <td><small>NEXT ASSY:</small></td> <td colspan="2"></td> <td><small>SCALE</small></td> <td>NONE</td> <td colspan="2"><small>SHEET 1 OF 2</small></td> </tr> </tbody> </table>					QUANTITY	MATERIALS LIST				<small>UNLESS OTHERWISE SPECIFIED</small> 1) All dimensions are in metric(mm). 2) Tolerances are as follows: 1 PL DEC ±0.30 Fractions ±1/64 2 PL DEC ±0.15 Angles ±1° 3 PL DEC ±0.08 3) Note reference =	<small>SIGNATURES</small>	<small>DATE</small>	<div style="text-align: center;"> <h1>Amphenol</h1> <p>Sine Systems - www.amphenol-sine.com 44724 Morley Drive Clinton Township, MI 48036</p> </div>		<small>DRAWN:</small> ROOKIE	20/NOV/17	<small>CHECKED:</small> ORION	20/NOV/17	<small>ENGINEER:</small>		<small>APPROVAL:</small> TOMMY	20/NOV/17	<small>CUSTOMER:</small>	RECEPTACLE, KEYPED, 12 PIN, ATM SERIES,PANEL MOUNT		<small>MATERIAL SPECIFICATIONS:</small>	<small>THIS DRAWING IS SUPPLIED FOR INFORMATION ONLY. DESIGN FEATURES, SPECIFICATIONS AND PERFORMANCE DATA SHOWN HEREON ARE THE PROPERTY OF THE AMPHENOL CORPORATION. NO RIGHTS OF REPRODUCTION ARE IMPLIED. ALL DIMENSIONS ARE SUBJECT TO NORMAL MANUFACTURING VARIATIONS.</small>		<small>SIZE</small>	<small>TYPE</small>	<small>DWG NO.</small>	<small>REVISION</small>	<small>PROCESS SPECIFICATIONS:</small>			B	C-	ATM04-12PX-PM01	A1	<small>NEXT ASSY:</small>			<small>SCALE</small>	NONE	<small>SHEET 1 OF 2</small>	
QUANTITY	MATERIALS LIST																																													
<small>UNLESS OTHERWISE SPECIFIED</small> 1) All dimensions are in metric(mm). 2) Tolerances are as follows: 1 PL DEC ±0.30 Fractions ±1/64 2 PL DEC ±0.15 Angles ±1° 3 PL DEC ±0.08 3) Note reference =	<small>SIGNATURES</small>	<small>DATE</small>	<div style="text-align: center;"> <h1>Amphenol</h1> <p>Sine Systems - www.amphenol-sine.com 44724 Morley Drive Clinton Township, MI 48036</p> </div>																																											
	<small>DRAWN:</small> ROOKIE	20/NOV/17																																												
	<small>CHECKED:</small> ORION	20/NOV/17																																												
	<small>ENGINEER:</small>																																													
<small>APPROVAL:</small> TOMMY	20/NOV/17	<small>CUSTOMER:</small>	RECEPTACLE, KEYPED, 12 PIN, ATM SERIES,PANEL MOUNT																																											
<small>MATERIAL SPECIFICATIONS:</small>	<small>THIS DRAWING IS SUPPLIED FOR INFORMATION ONLY. DESIGN FEATURES, SPECIFICATIONS AND PERFORMANCE DATA SHOWN HEREON ARE THE PROPERTY OF THE AMPHENOL CORPORATION. NO RIGHTS OF REPRODUCTION ARE IMPLIED. ALL DIMENSIONS ARE SUBJECT TO NORMAL MANUFACTURING VARIATIONS.</small>		<small>SIZE</small>	<small>TYPE</small>	<small>DWG NO.</small>	<small>REVISION</small>																																								
<small>PROCESS SPECIFICATIONS:</small>			B	C-	ATM04-12PX-PM01	A1																																								
<small>NEXT ASSY:</small>			<small>SCALE</small>	NONE	<small>SHEET 1 OF 2</small>																																									

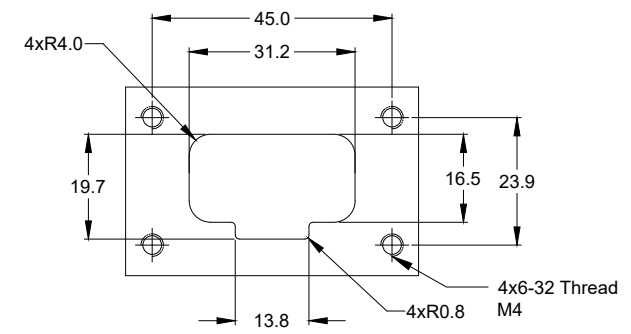
REVISIONS					
REV	ECO	DESCRIPTION	DATE	BY	APPR



FRONT PANEL



BACK PANEL



RECOMMENDED MOUNTING HOLE

TITLE: RECEPTACLE, KEYPED, 12 PIN, ATM SERIES, PANEL MOUNT
 DWG NO.: ATM04-12PX-PM01
 REV: A1
 SH: 3
 OF: 3

QUANTITY	PART NUMBER	DESCRIPTION	ITEM
MATERIALS LIST			
UNLESS OTHERWISE SPECIFIED 1) All dimensions are in metric(mm). 2) Tolerances are as follows: 1 PL DEC ±0.30 Fractions ±1/64 2 PL DEC ±0.15 Angles ±1° 3 PL DEC ±0.08 3) Note reference =		SIGNATURES DRAWN: ROOKIE 20/NOV/17 CHECKED: ORION 20/NOV/17 ENGINEER: APPROVAL: TOMMY 20/NOV/17 CUSTOMER:	DATE 20/NOV/17 20/NOV/17 20/NOV/17
MATERIAL SPECIFICATIONS: PROCESS SPECIFICATIONS: NEXT ASSY:		Amphenol Sine Systems - www.amphenol-sine.com 44724 Morley Drive Clinton Township, MI 48036 RECEPTACLE, KEYPED, 12 PIN, ATM SERIES, PANEL MOUNT THIS DRAWING IS SUPPLIED FOR INFORMATION ONLY. DESIGN FEATURES, SPECIFICATIONS AND PERFORMANCE DATA SHOWN HEREON ARE THE PROPERTY OF THE AMPHENOL CORPORATION. NO RIGHTS OF REPRODUCTION ARE IMPLIED. ALL DIMENSIONS ARE SUBJECT TO NORMAL MANUFACTURING VARIATIONS.	
		SIZE: B C- SCALE: NONE	DWG NO.: ATM04-12PX-PM01 REVISION: A1 SHEET 1 OF 2