



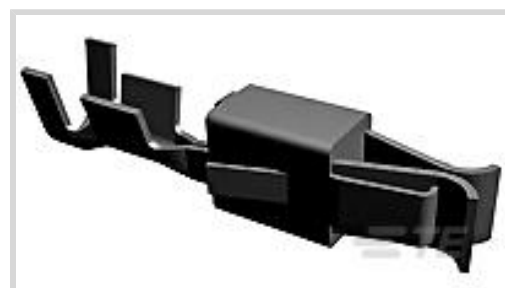
AMP | Junior Power Timer

TE Internal #: 928876-1

Automotive Terminals, Receptacle, Mating Tab Width 2.8 mm [.11 in], Tab Thickness .031 in [.8 mm], 20 – 17 AWG Wire Size, Junior Power Timer

[View on TE.com >](#)

Terminals & Splices > Automotive Terminals > TIMER, RECEPTACLE AND TAB



Terminal Type: **Receptacle**

Mating Tab Width: **2.8 mm [.11 in]**

Mating Tab Thickness: **.8 mm [.031 in]**

Terminal Transmits: **0 – 24 A (Low Power)**

Wire Size: **20 – 17 AWG**

[All TIMER, RECEPTACLE AND TAB \(344\)](#)

Features

Product Type Features

| | |
|-------------------------|---------------|
| Sealable | No |
| Primary Locking Feature | Locking Lance |

Contact Features

| | |
|------------------------|------------------|
| Contact Size | 2.8mm |
| Contact Fabrication | Stamped & Formed |
| Typical Current Rating | 15 A |
| Crimp Type | F-Crimp |
| Terminal Type | Receptacle |
| Mating Tab Width | 2.8 mm[.11 in] |
| Mating Tab Thickness | .8 mm[.031 in] |

Termination Features

| | |
|------------------------------------|-------|
| Termination Method to Wire & Cable | Crimp |
| Product Terminates To | Wire |

Dimensions

| | |
|--------------------------|--------------------------------|
| Wire Size | .5 – 1 mm ² |
| Wire Size Search | 17 AWG, 18 AWG, 19 AWG, 20 AWG |
| Wire Insulation Diameter | 2 – 2.7 mm[.079 – .106 in] |



Usage Conditions

| | |
|-----------------------------|--|
| Insulation Option | Uninsulated |
| Operating Temperature (Max) | 80 °C, 85 °C, 90 °C, 100 °C, 105 °C [176 °F] [185 °F][194 °F][212 °F][221 °F] |
| Operating Temperature Range | -55 – 105 °C [-67 – 221 °F] |

Operation/Application

| | |
|------------------------------------|--------|
| Compatible With Wire Base Material | Copper |
|------------------------------------|--------|

Industry Standards

| | |
|-----------------|--|
| Agency/Standard | DIN 72 551 Part 6, DIN ISO 6722 part 3 |
|-----------------|--|

Packaging Features

| | |
|--------------------|------|
| Packaging Method | Reel |
| Packaging Quantity | 4000 |

Other

| | |
|--------------------|----------------------|
| Terminal Transmits | 0 – 24 A (Low Power) |
|--------------------|----------------------|

Product Compliance

[For compliance documentation, visit the product page on TE.com>](#)

| | |
|---|--|
| EU RoHS Directive 2011/65/EU | Compliant |
| EU ELV Directive 2000/53/EC | Compliant |
| China RoHS 2 Directive MIIT Order No 32, 2016 | No Restricted Materials Above Threshold |
| EU REACH Regulation (EC) No. 1907/2006 | Current ECHA Candidate List: JUNE 2022 (224) Candidate List Declared Against: JAN 2022 (223) SVHC > Threshold: Not Yet Reviewed |
| Halogen Content | Low Halogen - Br, Cl, F, I < 900 ppm per homogenous material. Also BFR/CFR/PVC Free |
| Solder Process Capability | Not applicable for solder process capability |

Product Compliance Disclaimer

This information is provided based on reasonable inquiry of our suppliers and represents our current actual knowledge based on the information they provided. This information is subject to change. The part numbers that TE has identified as EU RoHS compliant have a maximum concentration of 0.1% by weight in homogenous materials for lead, hexavalent chromium, mercury, PBB, PBDE, DBP, BBP, DEHP, DIBP, and 0.01% for cadmium, or qualify for an exemption to these limits as defined in the Annexes of Directive 2011/65/EU (RoHS2). Finished electrical and electronic equipment products will be CE marked as required by Directive 2011/65/EU. Components may not be CE marked. Additionally, the part

numbers that TE has identified as EU ELV compliant have a maximum concentration of 0.1% by weight in homogenous materials for lead, hexavalent chromium, and mercury, and 0.01% for cadmium, or qualify for an exemption to these limits as defined in the Annexes of Directive 2000/53/EC (ELV). Regarding the REACH Regulation, the information TE provides on SVHC in articles for this part number is based on the latest European Chemicals Agency (ECHA) 'Guidance on requirements for substances in articles' posted at this URL: <https://echa.europa.eu/guidance-documents/guidance-on-reach>

Compatible Parts



TE Part # 4-1579007-3
EXTRACTION TOOL KIT



TE Part # 1-1579007-6
EXTRACTION TOOL



TE Part # 2305570-1
TERMINAL CUTTER, SIDE FEED



TE Part # CAT-T4827-CH8172
TIMER, CONNECTOR HOUSING



TE Part # 2-2151220-1
OCEAN_2.0_APPLICATOR-S-080F130F-001-0199



TE Part # 2-2151220-2
OCEAN_2.0_APPLICATOR-E-080F130FA



TE Part # 2151220-1
OCEAN_2.0_APPLICATOR-S-080F130F-001-0199



TE Part # 2151220-2
OCEAN_2.0_APPLICATOR-E-080F130FA



TE Part # 7-2151220-1
OCEAN_2.0_APPLICATOR-S-080F130F



TE Part # 7-2151220-2
OCEAN_2.0_APPLICATOR-E-080F130FA



TE Part # 7-2151220-7
OCEAN_2.0_SPARE_PART_KIT-080F130F



TE Part # 539674-2
MATRIZE JPT

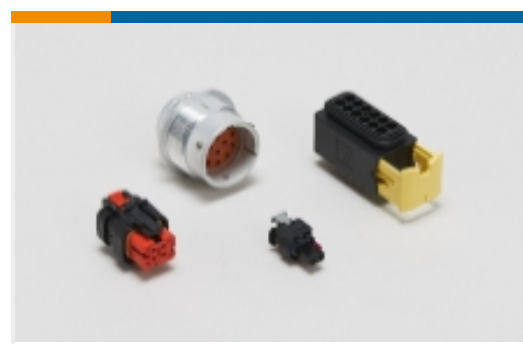


TE Part # 966237-1
JPT GEH KOMPL 26P

Also in the Series | [Junior Power Timer](#)



Automotive Connector Caps & Covers (5)



Automotive Housings(225)



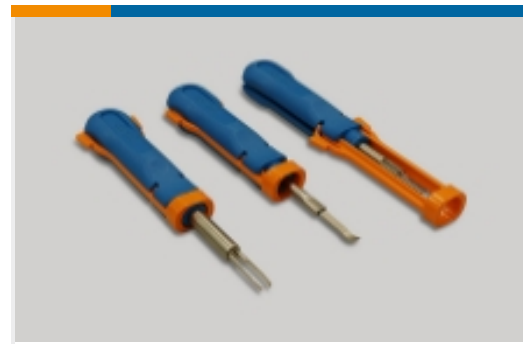
Automotive Seals & Cavity Plugs(10)



Automotive Terminals(82)



Busbars & Terminals(1)



Insertion & Extraction Tools(9)



Module Components(6)



Other Automotive Connector Accessories(1)



PCB Headers & Receptacles(1)

Customers Also Bought



TE Part #4-1825059-2
ADF08STTR04=DIP S,FLUSH,SMT-GW



TE Part #926984-1
STD TIMER CONTACT



TE Part #7-1393211-1
T92P7D22-24



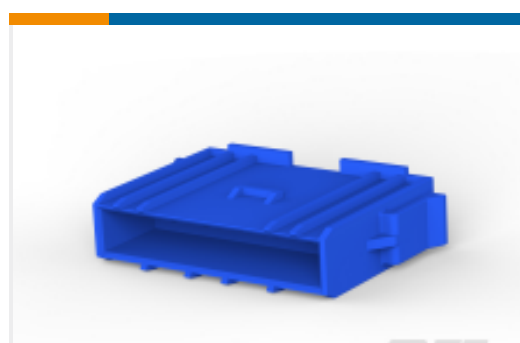
TE Part #2-1630024-1
HSC250 R47 5%



TE Part #1534415-7
DUOPL POW FEM CON7P



TE Part #1217264-1
RCPT 090 CLSTR PIN 22-14



TE Part #2120050-1
FF HOUSING 6P NYLON BLUE



TE Part #6-1241967-8
FF 8POS TAB HSG NYLON BLUE

Documents



Product Drawings

JUN-POW-TIM KONT

English

CAD Files

Customer View Model

[ENG_CVM_928876-1_A2.3d_igs.zip](#)

English

Customer View Model

[ENG_CVM_928876-1_A2.3d_stp.zip](#)

English

Customer View Model

[ENG_CVM_928876-1_A2.2d_dxf.zip](#)

English

3D PDF

English

By downloading the CAD file I accept and agree to the [Terms and Conditions](#) of use.

Datasheets & Catalog Pages

Timer Interconnection System

English

Product Specifications

Product Specification

English

Agency Approvals

VDE Certificate

English