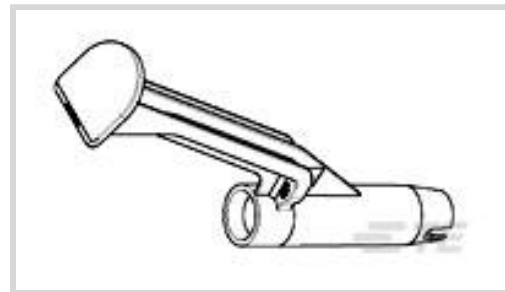




Connectors > Automotive Connectors > Connector Housings



Connector & Housing Type: **Housing for Female Terminals**

Mating Tab Width: **.64 mm, 1.5 mm [.025 in, .059 in]**

Connector System: **Wire-to-Board, Wire-to-Device**

Number of Positions: **1**

Sealable: **Yes**

Features

Product Type Features

Connector & Housing Shape	Circular
Connector & Housing Type	Housing for Female Terminals
Connector System	Wire-to-Board, Wire-to-Device
Sealable	Yes
Hybrid Connector	No
Primary Locking Feature	On the Terminal

Configuration Features

Number of Positions	1
Number of Rows	1

Body Features

Cable Exit Angle	90°
Body Material	PBT
Primary Product Color	Black

Contact Features

Contact Size	4mm
Contact Type	Receptacle
Mating Tab Width	.64 mm, 1.5 mm [.025 in][.059 in]

Mechanical Attachment



Mounting Feature	Without
Terminal Position Assurance	No
Strain Relief	With
Mating Alignment Type	Polarization Slot
Mating Alignment	With

Dimensions

Product Width	14.5 mm[.571 in]
Product Length	41 mm[1.614 in]
Product Height	83.5 mm[3.287 in]

Usage Conditions

Operating Temperature (Max)	70 °C, 75 °C, 80 °C, 85 °C, 90 °C, 100 °C [158 °F][167 °F][176 °F][185 °F][194 °F][212 °F]
Operating Temperature Range	-40 – 100 °C[-40 – 212 °F]

Operation/Application

Circuit Application	Signal
---------------------	--------

Industry Standards

UL Flammability Rating	UL 94HB
------------------------	---------

Packaging Features

Packaging Method	Box
------------------	-----

Other

Serviceable	No
Connector Position Assurance Capable	No

Product Compliance

[For compliance documentation, visit the product page on TE.com>](#)

EU RoHS Directive 2011/65/EU	Compliant
EU ELV Directive 2000/53/EC	Compliant
China RoHS 2 Directive MIIT Order No 32, 2016	No Restricted Materials Above Threshold
EU REACH Regulation (EC) No. 1907/2006	Current ECHA Candidate List: JUNE 2022 (224) Candidate List Declared Against: JAN 2022 (223) SVHC > Threshold:

Not Yet Reviewed

Halogen Content

Low Halogen - Br, Cl, F, I < 900 ppm per homogenous material. Also BFR/CFR/PVC Free

Solder Process Capability

Not reviewed for solder process capability

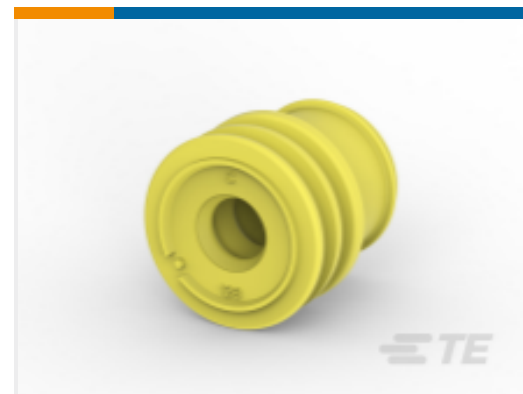
Product Compliance Disclaimer

This information is provided based on reasonable inquiry of our suppliers and represents our current actual knowledge based on the information they provided. This information is subject to change. The part numbers that TE has identified as EU RoHS compliant have a maximum concentration of 0.1% by weight in homogenous materials for lead, hexavalent chromium, mercury, PBB, PBDE, DBP, BBP, DEHP, DIBP, and 0.01% for cadmium, or qualify for an exemption to these limits as defined in the Annexes of Directive 2011/65/EU (RoHS2). Finished electrical and electronic equipment products will be CE marked as required by Directive 2011/65/EU. Components may not be CE marked. Additionally, the part numbers that TE has identified as EU ELV compliant have a maximum concentration of 0.1% by weight in homogenous materials for lead, hexavalent chromium, and mercury, and 0.01% for cadmium, or qualify for an exemption to these limits as defined in the Annexes of Directive 2000/53/EC (ELV). Regarding the REACH Regulation, the information TE provides on SVHC in articles for this part number is based on the latest European Chemicals Agency (ECHA) 'Guidance on requirements for substances in articles' posted at this URL: <https://echa.europa.eu/guidance-documents/guidance-on-reach>

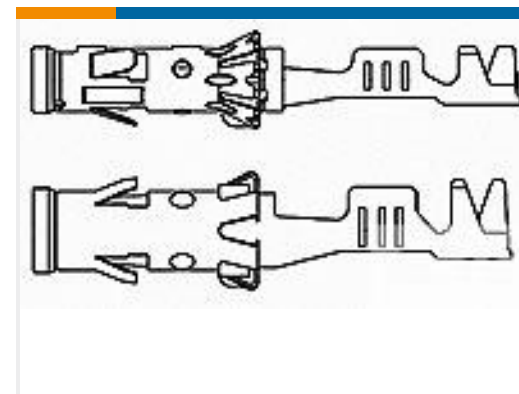
Compatible Parts



TE Part # 963244-1
EINZELDRAHTDICHTUNG



TE Part # 963245-1
EINZELLEIT-DICHTUNG



TE Part # 962956-1
4MM BUCHS-KONTAKT

Also in the Series | Round Connector System



Automotive Connector Caps & Covers (5)



Automotive Housings(16)



Automotive Seals & Cavity Plugs(3)



Automotive Terminals(74)



Insertion & Extraction Tools(8)

Customers Also Bought

TE Part #1-1718624-2
2 POS HSG AMP MCP 2.8 ASSYTE Part #1564724-1
AMP MCP, SFC, RECEPTACLETE Part #1-1718888-1
2POS, MCON 1.2 LL REC SEALEDTE Part #284716-6
6 POS. MT-II REC. CONNECTORTE Part #284844-8
AMP MCP, SEALED CONNECTOR
HOUSINGTE Part #1-1801175-6
2W RECEPTACLE HP CONNECTOR
BROWNTE Part #284818-2
1 WAYS CONNECTOR F.GLOW PLUG
- RED VERS.TE Part #282079-3
AMP SUPERSEAL 1.5 SERIES 1P PL

Documents

Product Drawings

1W HSG DIESEL GLOW PLUG

English

CAD Files

Customer View Model

[ENG_CVM_CVM_953631-1_A.2d_dxf.zip](#)

English

3D PDF

3D

Customer View Model

[ENG_CVM_CVM_953631-1_A.3d_igs.zip](#)

English

Customer View Model

[ENG_CVM_CVM_953631-1_A.3d_stp.zip](#)

English

By downloading the CAD file I accept and agree to the [Terms and Conditions](#) of use.



Product Specifications

Product Specification

French

Instruction Sheets

Instruction Sheet (non U.S.)

French