

# Product Data Sheet

Power Terminals pitch 5.08 x 7.62 mm,  
Part No. 910-60050

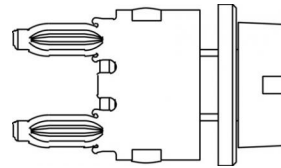
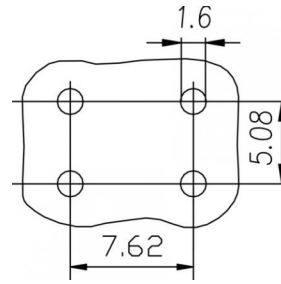
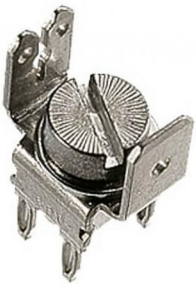


Illustration similar



Press-fit



Power



Rugged

- thread M5
- termination length 4.5 mm



» to product on [www.ept.de](http://www.ept.de)



» to product group Power Terminals

# Product Data Sheet

Power Terminals pitch 5.08 x 7.62 mm,  
Part No. 910-60050



---

## Technical Specifications

### Basics

---

|                             |                 |
|-----------------------------|-----------------|
| Termination Technology      | Press-fit       |
| Termination Length          | 4.5 mm          |
| Operating Temperature Range | -55°C to +125°C |

### Material

---

|                  |              |
|------------------|--------------|
| Contact Material | Copper alloy |
| Plating          | Sn           |

### Mechanical

---

|       |                |
|-------|----------------|
| Pitch | 5.08 x 7.62 mm |
|-------|----------------|

### Electrical

---

|                     |                            |
|---------------------|----------------------------|
| Operational Current | 20° 45A, 70° 30A, 100° 25A |
|---------------------|----------------------------|

### Processing

---

|                       |        |
|-----------------------|--------|
| Thread                | M5     |
| Max. Fastening Torque | 1.3 Nm |

### Approval / Compliance

---

|             |                |
|-------------|----------------|
| Environment | RoHS compliant |
|-------------|----------------|

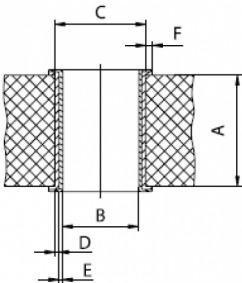
# Product Data Sheet

Power Terminals pitch 5.08 x 7.62 mm,  
Part No. 910-60050



## Hole Specifications

Plated through-hole according to IEC 60352-5



| Material               | imm. Sn printed circuit boards |
|------------------------|--------------------------------|
| <b>Nominal Hole</b>    | <b>Ø 1.6 mm</b>                |
| <b>A PCB Thickness</b> | min 2.9 mm                     |
| <b>B Plated Hole</b>   | Ø 1.6 +0.09 / -0.06 mm         |
| <b>C Drill Hole</b>    | 1.75 ±0.025 mm                 |
| <b>D Cu Plating</b>    | min. 25 µm                     |
| <b>E Surface</b>       | imm. Sn plating, max. 1.5 µm   |
| <b>F Annular Ring</b>  | min. 0.1 mm                    |

| Material               | Ni, Au printed circuit boards                       |
|------------------------|---|
| <b>Nominal Hole</b>    | <b>Ø 1.6 mm</b>                                     |
| <b>A PCB Thickness</b> | min 2.9 mm  |
| <b>B Plated Hole</b>   | Ø 1.6 +0.09 / -0.06 mm                              |
| <b>C Drill Hole</b>    | 1.75 ±0.025 mm                                      |
| <b>D Cu Plating</b>    | min. 25 µm  |
| <b>E Surface</b>       | Ni, Au plating, 0.05 - 0.2 µm Au over 2.5 - 5 µm Ni |
| <b>F Annular Ring</b>  | min. 0.1 mm   |

| Material               | HAL Sn printed circuit boards |
|------------------------|-------------------------------|
| <b>Nominal Hole</b>    | <b>Ø 1.6 mm</b>               |
| <b>A PCB Thickness</b> | min 2.9 mm                    |
| <b>B Plated Hole</b>   | Ø 1.6 +0.09 / -0.06 mm        |
| <b>C Drill Hole</b>    | 1.75 ±0.025 mm                |
| <b>D Cu Plating</b>    | min. 25 µm                    |
| <b>E Surface</b>       | HAL Sn, 5 - 15 µm             |
| <b>F Annular Ring</b>  | min. 0.1 mm                   |

# Product Data Sheet

Power Terminals pitch 5.08 x 7.62 mm,  
Part No. 910-60050

---



## Drawings

Component data in 2D and 3D format you can download here:

[» PDF](#)

[» 3D IGES](#)

[» 3D STEP](#)

[» 3D PDF](#)