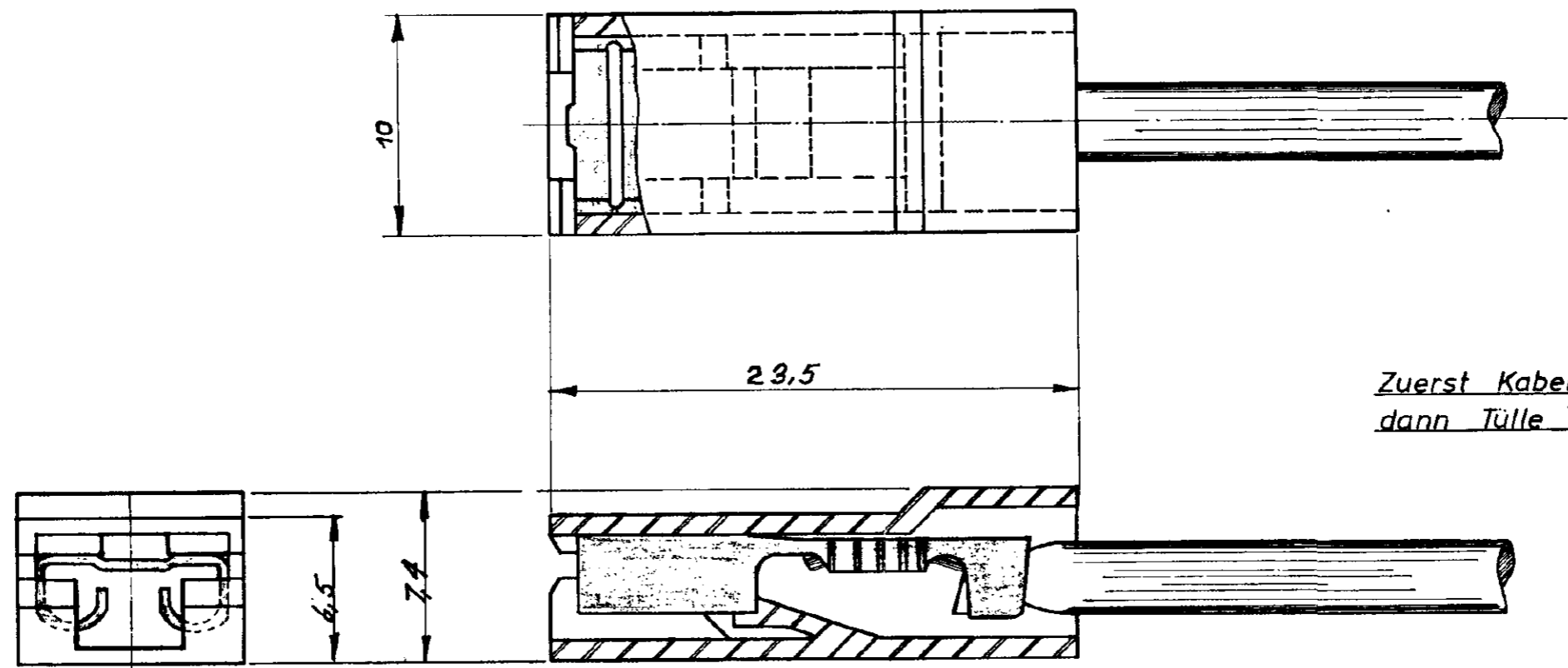


|   |          |                      |                     |         |           |
|---|----------|----------------------|---------------------|---------|-----------|
| △ | OBSOLETE | <del>925-068-3</del> | Thermopl. Polyester | natur   | UL 94 V-0 |
|   | OBSOLETE | <del>925-068-2</del> | Polyamid 6.6        | schwarz | UL 94 V-2 |



Zuerst Kabelschuh anschlagen,  
dann Tülle aufstecken.

Zeichnung geschützt durch  
© Copyright 1967  
TEAMP DEUTSCHLAND GmbH  
Alle Rechte vorbehalten

△ OBSOLETE PARTS: OBSOLETE CIS STREAMLINING PER D.RENAUD/D.SINISI

|   |          |                      |                    |       |           |
|---|----------|----------------------|--------------------|-------|-----------|
| △ | OBSOLETE | <del>925-068-1</del> | Polypropylen (PPH) | natur | UL 94 V-2 |
|   |          | 925-068-0            | Polyamid 6.6       | natur |           |
|   |          | Nummer               | Werkstoff          | Farbe |           |

**American Projection**

| LTR | REVISION RECORD           | DR | CHK | DATE    |
|-----|---------------------------|----|-----|---------|
| C2  | ECR-10-026307             | KK | HMR | 11FEB11 |
| C1  | REVISED PER ECO-09-026444 | KK | AEG | NOV09   |
| C   | -3 Thermopl. Polyester    | KK |     | 4-77    |
| B   | -1 Polypropylen added     | KK |     | 10/74   |
| A   | DIMENSION                 | KK |     | 7-67    |

| NUMBER | REQUIRED PER ASSEMBLY | DESCRIPTION |
|--------|-----------------------|-------------|
|        |                       |             |

© 1967 BY TE INCORPORATED. ALL RIGHTS RESERVED.  
TE PRODUCTS COVERED BY PATENTS AND/OR PATENTS PENDING.

**CUSTOMER COPY REFERENCE ONLY**

DR 1-6-67 Kuhlmann

CHK

DE

MATERIAL AND FINISH

**TE** TE Connectivity

CLASS

WIRE - RANGE - INSULATION

TYPE

TOLERANCE EXCEPT AS NOTED ± .015 ± 1° 0'

SCALE 4:1

LOC A1

NO B

NO 925058

REV C2

NAME ISOLIERTÜLLE FÜR 250 SERIE FASTON

TOLERANZ ± 0,2 mm

DIMENSIONS IN INCHES. DO NOT SCALE PRINT.

PRINT DIST