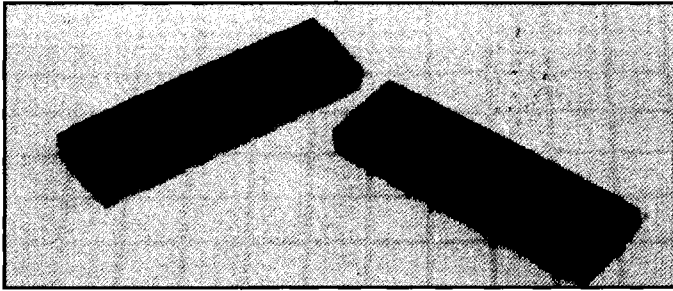


.100" (2.54mm) SIL Crimp Receptacles



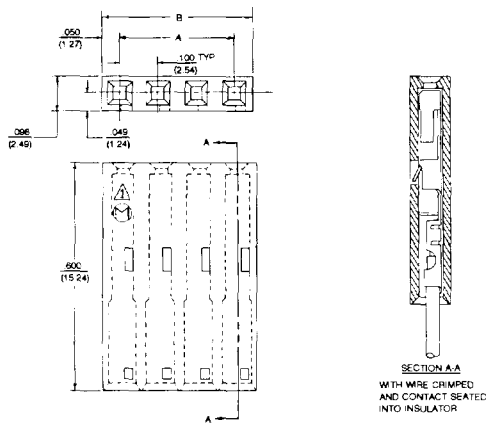
Side by Side and End to End Stackable



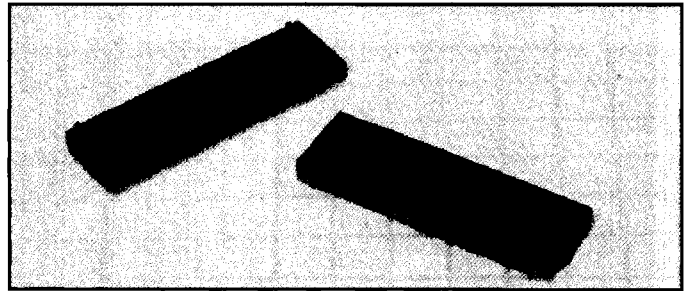
PART NUMBER CODING

9300-0XX

NO. OF POSITIONS
2 - 40



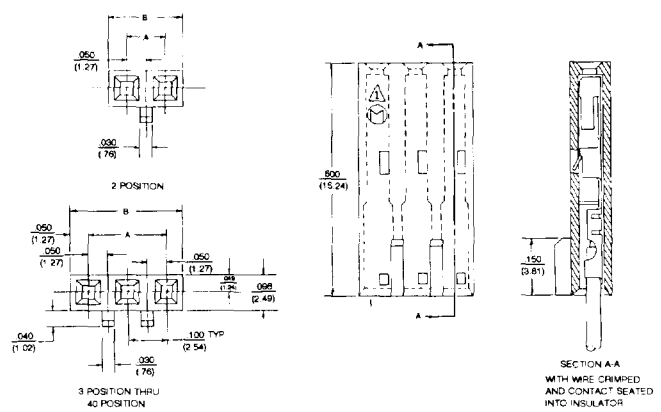
With Back Polarizing Ribs



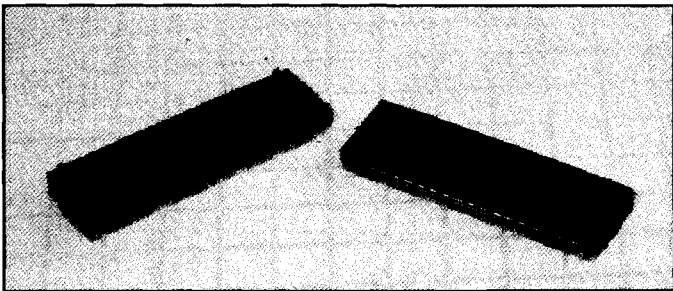
PART NUMBER CODING

9300-1XX

NO. OF POSITIONS
2 - 40



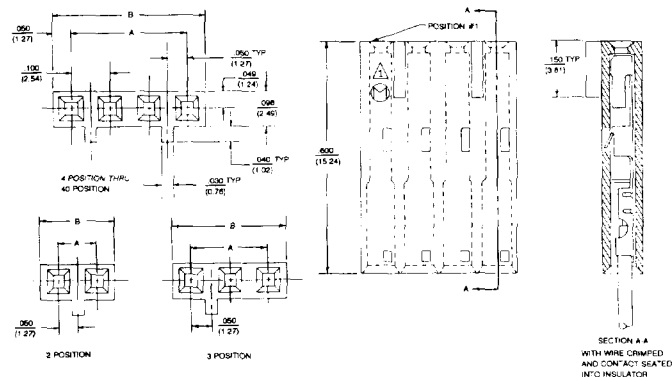
With Front Polarizing Ribs



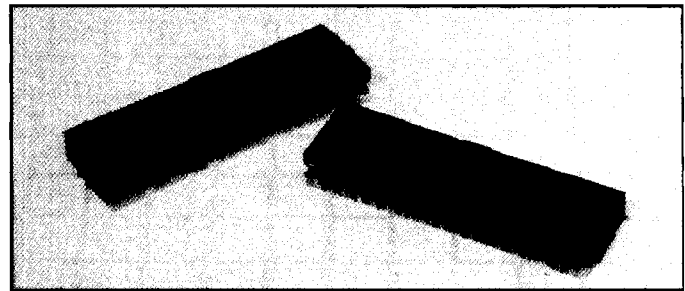
PART NUMBER CODING

9300-2XX

NO. OF POSITIONS
2 - 40



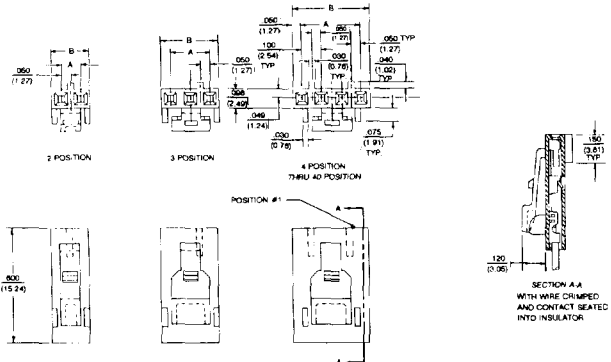
With Polarizing and Locking Latch



PART NUMBER CODING

9300-3XX

NO. OF POSITIONS
2 - 40



Note: Dim. A & B - see page 3B

These housings accept 940X - 6XX crimp terminals