

928343-5 ✓ ACTIVE

RAST | RAST 5 IDC Connectors

TE Internal #: 928343-5

Housing, Receptacle, Wire-to-Wire, 5 Position, 5 mm [.197 in]

Centerline, Crimp, 1 Row, Natural, Mating Retention, Wire & Cable,

RAST 5 IDC Connectors

[View on TE.com >](#)



Connectors > PCB Connectors > Wire-to-Board Connectors > Wire-to-Board Connector Assemblies & Housings



Connector Product Type: **Housing**

Connector & Housing Type: **Receptacle**

Connector System: **Wire-to-Wire**

Number of Positions: **5**

Centerline (Pitch): **5 mm [.197 in]**

Features

Product Type Features

Connector Product Type	Housing
Connector & Housing Type	Receptacle
Connector System	Wire-to-Wire
Sealable	No
Connector & Contact Terminates To	Wire & Cable

Configuration Features

Keying & Polarized Rib Location	1a/5b
Number of Positions	5
Number of Rows	1

Termination Features

Termination Method to Wire & Cable	Crimp
------------------------------------	-------

Mechanical Attachment

Locking Latch Between Cavity Number	2&3
Strain Relief	Without



Panel Mount Feature	Without
PCB Mount Retention	Without
Mating Retention Type	Latch
Mating Retention	With
Connector Mounting Type	Cable Mount (Free-Hanging)

Housing Features

Housing Material	PA 6.6
Centerline (Pitch)	5 mm [.197 in]
Housing Color	Natural

Dimensions

Connector Length	25 mm [.984 in]
Connector Height	12.2 mm [.48 in]

Usage Conditions

Operating Temperature Range	-55 – 105 °C [-67 – 221 °F]
-----------------------------	-----------------------------

Operation/Application

Circuit Application	Power & Signal
---------------------	----------------

Industry Standards

RAST Version	None
Glow Wire Rating	Standard Part - Not Glow Wire
UL Flammability Rating	UL 94V-2

Packaging Features

Packaging Quantity	2000
Packaging Method	Bag

Other

Comment	Tab Housing uses FASTIN-FASTON .250 series Tabs.
---------	--

Product Compliance

[For compliance documentation, visit the product page on TE.com>](#)

EU RoHS Directive 2011/65/EU	Compliant
EU ELV Directive 2000/53/EC	Compliant
China RoHS 2 Directive MIIT Order No 32, 2016	No Restricted Materials Above Threshold



EU REACH Regulation (EC) No. 1907/2006

Current ECHA Candidate List: JUNE 2022 (224)

Candidate List Declared Against: JAN 2022 (223)

SVHC > Threshold:
Not Yet Reviewed

Halogen Content

Low Halogen - Br, Cl, F, I < 900 ppm per homogenous material. Also BFR/CFR/PVC Free

Solder Process Capability

Not applicable for solder process capability

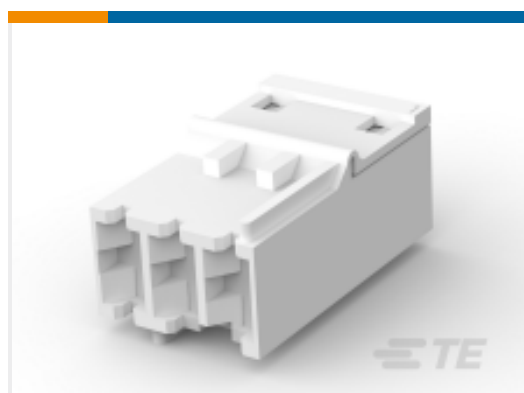
Product Compliance Disclaimer

This information is provided based on reasonable inquiry of our suppliers and represents our current actual knowledge based on the information they provided. This information is subject to change. The part numbers that TE has identified as EU RoHS compliant have a maximum concentration of 0.1% by weight in homogenous materials for lead, hexavalent chromium, mercury, PBB, PBDE, DBP, BBP, DEHP, DIBP, and 0.01% for cadmium, or qualify for an exemption to these limits as defined in the Annexes of Directive 2011/65/EU (RoHS2). Finished electrical and electronic equipment products will be CE marked as required by Directive 2011/65/EU. Components may not be CE marked. Additionally, the part numbers that TE has identified as EU ELV compliant have a maximum concentration of 0.1% by weight in homogenous materials for lead, hexavalent chromium, and mercury, and 0.01% for cadmium, or qualify for an exemption to these limits as defined in the Annexes of Directive 2000/53/EC (ELV). Regarding the REACH Regulation, the information TE provides on SVHC in articles for this part number is based on the latest European Chemicals Agency (ECHA) 'Guidance on requirements for substances in articles' posted at this URL: <https://echa.europa.eu/guidance-documents/guidance-on-reach>

Compatible Parts



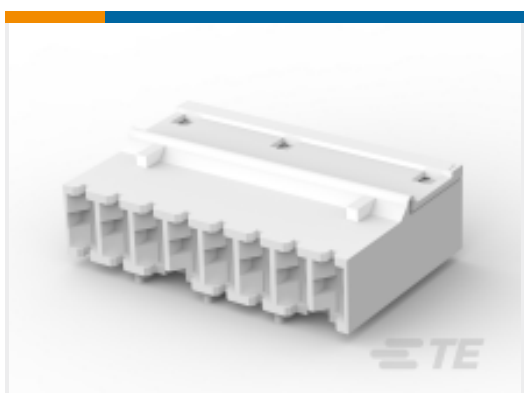
TE Part # 928343-4
STD TIMER GEH 4P



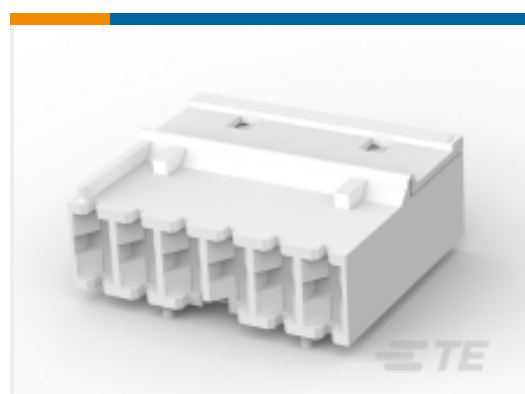
TE Part # 928343-3
STD-TIMER GEH 3P



TE Part # 928343-2
STD-TIM GEH 2P



TE Part # 928343-8
STD-TIMER GEH 8P



TE Part # 928343-6
STD-TIM GEH 6P



TE Part # 2-928343-8
STD-TIMER GEH 8P



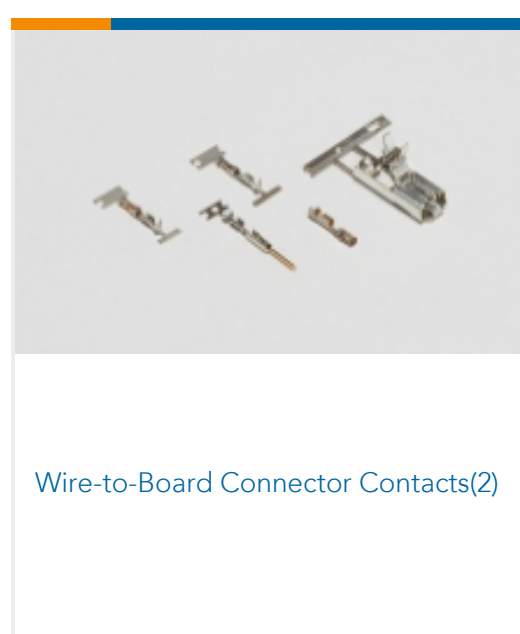
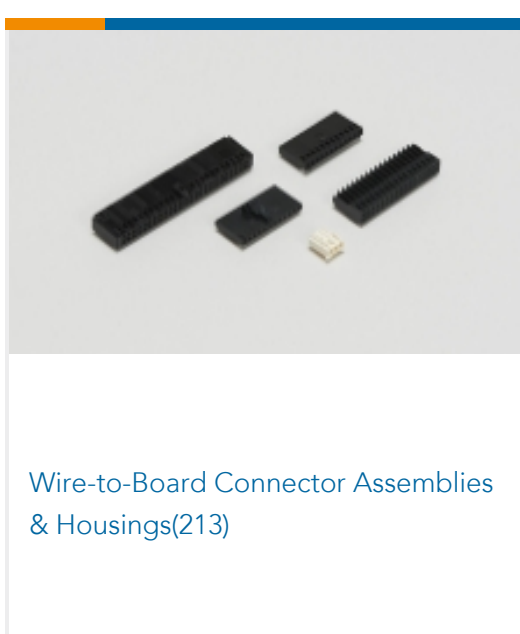
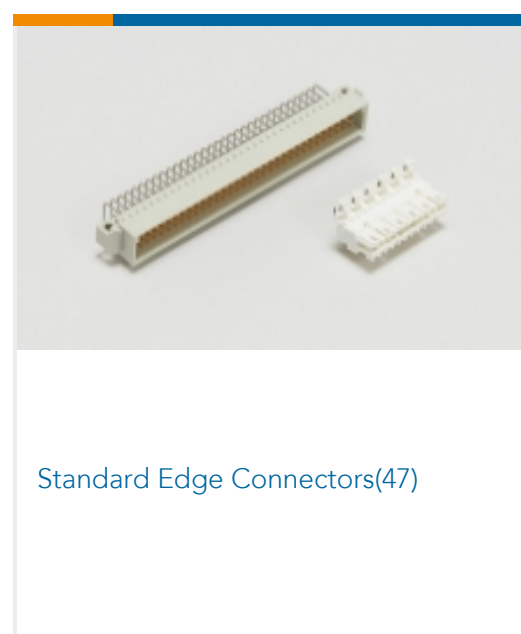
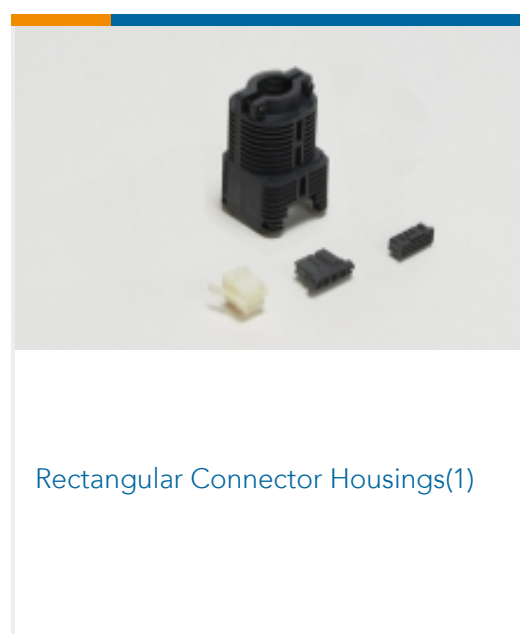
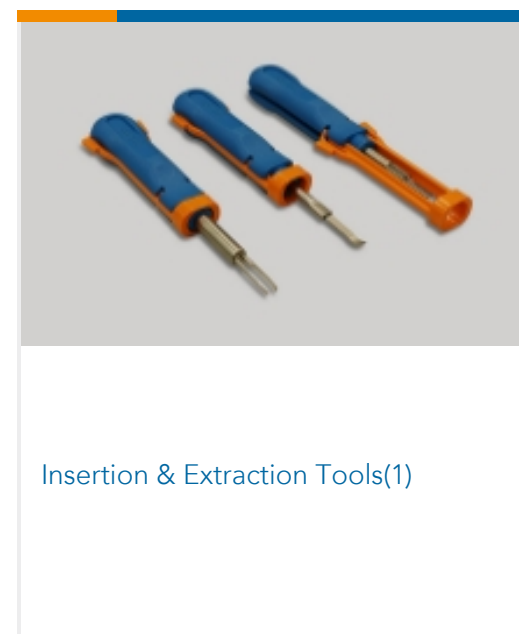
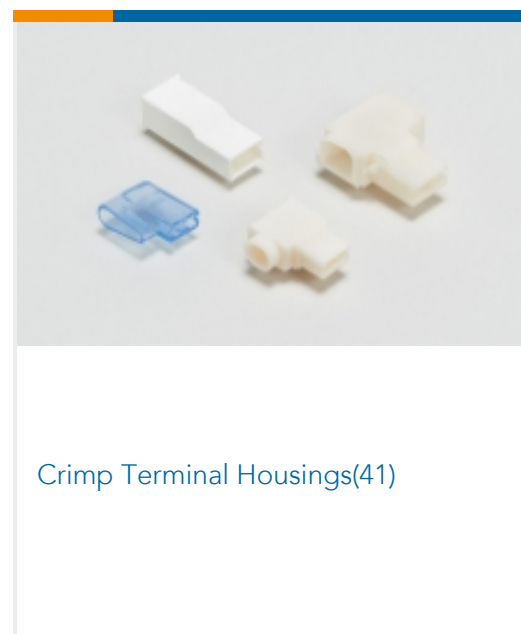
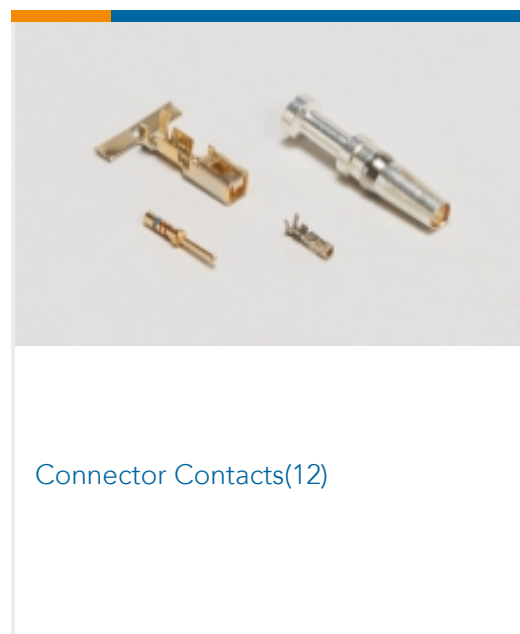
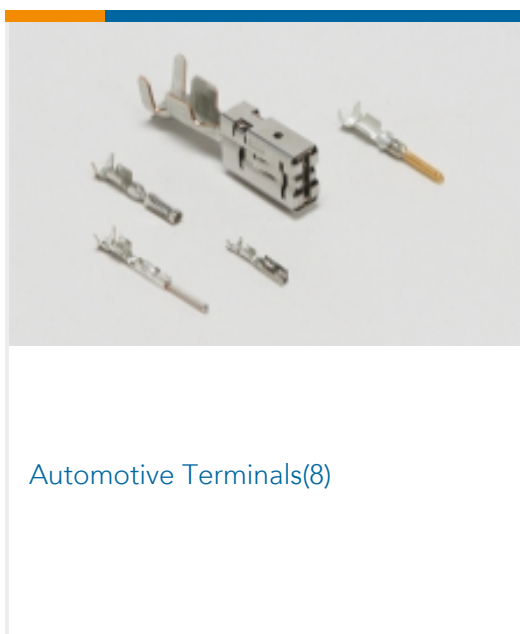
TE Part # 1-928343-1
STANDARD TIMER HOUSING



TE Part # 1-928343-2
STANDARD TIMER HOUSING



Also in the Series | RAST 5 IDC Connectors



Customers Also Bought



TE Part #321235
RECEPT, FASTON SPLICE 22-10



TE Part #178481-1
UP 3.96 4P PLUG HSG NATRL



TE Part #928962-4
FF 250 TAB 17-13 AWG .016 TPBR



TE Part #1971845-3
3P, RAST 5 Tab Header, THV



TE Part #1971845-5
5P, RAST 5 Tab Header, THV



TE Part #344261-1
13 WAY TAB ANTI-BACKOUT



TE Part #293011-1
5 POS. FASTIN-FASTON CONN. TAB HOUSING R



TE Part #928344-7
7P STD-TIMER GEH



TE Part #284985-1
7 POS. FASTIN-FASTON CONN. TAB HSG, RAST



TE Part #1320928-6
STRIP GUIDE

Documents

Product Drawings

5P STD-TIMER GEH

English

CAD Files

3D PDF

3D

Customer View Model

[ENG_CVM_CVM_928343-5_B.2d_dxf.zip](#)

English

Customer View Model

[ENG_CVM_CVM_928343-5_B.3d_igs.zip](#)

English

Customer View Model

[ENG_CVM_CVM_928343-5_B.3d_stp.zip](#)

English

By downloading the CAD file I accept and agree to the [Terms and Conditions](#) of use.

Datasheets & Catalog Pages



[1654742_HOUSEHOLD_APPLIANCES_RAST5](#)

English

[Product Environmental Compliance](#)

[TE Material Declaration](#)

English