



Connectors > Automotive Connectors > Connector Housings



Connector & Housing Type: **Housing for Female Terminals**

Mating Tab Width: **.64 mm, 1.5 mm [ .025 in, .059 in ]**

Connector System: **Wire-to-Board, Wire-to-Device**

Number of Positions: **1**

Sealable: **No**

## Features

### Product Type Features

Connector & Housing Shape	Circular
Connector & Housing Type	Housing for Female Terminals
Connector System	Wire-to-Board, Wire-to-Device
Sealable	No
Hybrid Connector	No
Primary Locking Feature	On the Terminal

### Configuration Features

Number of Positions	1
Number of Rows	1

### Body Features

Cable Exit Angle	90°
Body Material	PBT
Primary Product Color	Black

### Contact Features

Contact Size	4mm
Contact Type	Receptacle
Mating Tab Width	.64 mm, 1.5 mm [.025 in][.059 in]

### Mechanical Attachment



Mounting Feature	Without
Terminal Position Assurance	No
Strain Relief	With
Mating Alignment Type	Polarization Slot
Mating Alignment	With
Connector Mounting Type	Cable Mount (Free-Hanging)

### Dimensions

Product Width	62.5 mm[2.461 in]
Product Length	25 mm[.984 in]
Product Height	10 mm[.394 in]

### Usage Conditions

Operating Temperature (Max)	70 °C, 75 °C, 80 °C, 85 °C, 90 °C, 100 °C [158 °F][167 °F][176 °F][185 °F][194 °F][212 °F]
Operating Temperature Range	-40 – 100 °C[-40 – 212 °F]

### Operation/Application

Circuit Application	Signal
---------------------	--------

### Industry Standards

UL Flammability Rating	UL 94HB
------------------------	---------

### Packaging Features

Packaging Method	Box
------------------	-----

### Other

Serviceable	No
Connector Position Assurance Capable	No

### Product Compliance

[For compliance documentation, visit the product page on TE.com>](#)

EU RoHS Directive 2011/65/EU	Compliant
EU ELV Directive 2000/53/EC	Compliant
China RoHS 2 Directive MIIT Order No 32, 2016	No Restricted Materials Above Threshold
EU REACH Regulation (EC) No. 1907/2006	Current ECHA Candidate List: JUNE 2022 (224) Candidate List Declared Against: JAN 2021 (211)

SVHC > Threshold:  
Not Yet Reviewed

Halogen Content

Low Halogen - Br, Cl, F, I < 900 ppm per homogenous material. Also BFR/CFR/PVC Free

Solder Process Capability

Not reviewed for solder process capability

Product Compliance Disclaimer

This information is provided based on reasonable inquiry of our suppliers and represents our current actual knowledge based on the information they provided. This information is subject to change. The part numbers that TE has identified as EU RoHS compliant have a maximum concentration of 0.1% by weight in homogenous materials for lead, hexavalent chromium, mercury, PBB, PBDE, DBP, BBP, DEHP, DIBP, and 0.01% for cadmium, or qualify for an exemption to these limits as defined in the Annexes of Directive 2011/65/EU (RoHS2). Finished electrical and electronic equipment products will be CE marked as required by Directive 2011/65/EU. Components may not be CE marked. Additionally, the part numbers that TE has identified as EU ELV compliant have a maximum concentration of 0.1% by weight in homogenous materials for lead, hexavalent chromium, and mercury, and 0.01% for cadmium, or qualify for an exemption to these limits as defined in the Annexes of Directive 2000/53/EC (ELV). Regarding the REACH Regulation, the information TE provides on SVHC in articles for this part number is based on the latest European Chemicals Agency (ECHA) 'Guidance on requirements for substances in articles' posted at this URL: <https://echa.europa.eu/guidance-documents/guidance-on-reach>

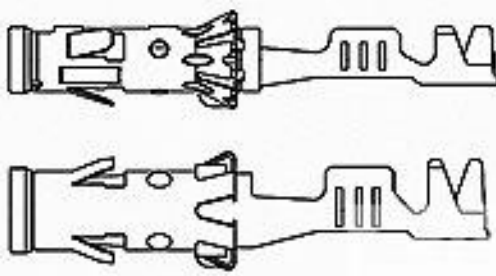
### Compatible Parts



TE Part # 963244-1  
EINZELDRAHTDICHTUNG




TE Part # 963245-1  
EINZELLEIT-DICHTUNG




TE Part # 962956-1  
4MM BUCHS-KONTAKT


### Also in the Series | Round Connector System




Automotive Connector Caps & Covers (5)



Automotive Housings(16)



Automotive Seals & Cavity Plugs(3)

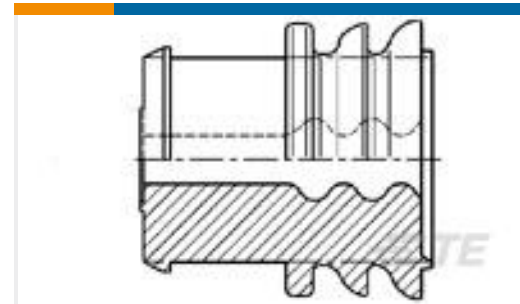
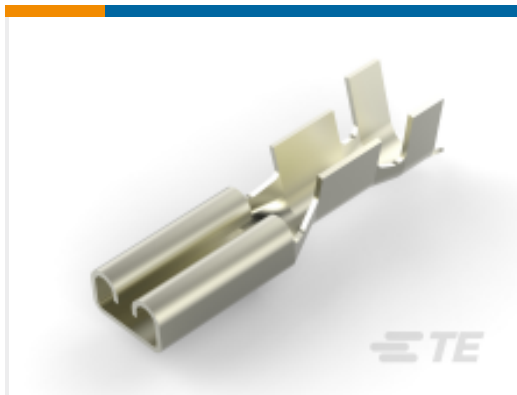
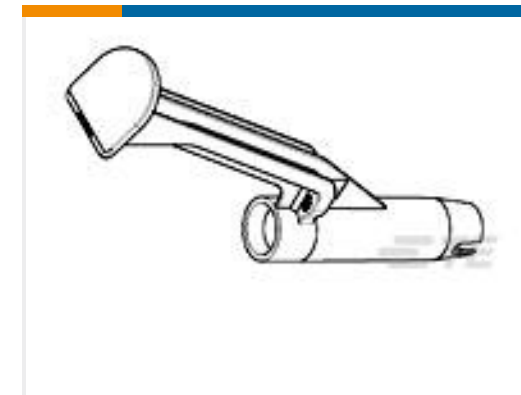


Automotive Terminals(74)



Insertion &amp; Extraction Tools(8)

## Customers Also Bought

TE Part #160655-2  
FASTON 110 REC 20-15 AWG PTPBTE Part #963245-1  
EINZELLEIT-DICHTUNGTE Part #1379662-2  
TH/.025 CONNECTOR SYSTEM,  
HOUSINGTE Part #2137299-8  
PACKAGE COMPONENT FOR 32P  
MIXETE Part #969176-1  
FF STECKHUELSE2,8TE Part #1801431-1  
RCPT CONT, 8MM NG1+, MAXIFUSE,  
2.5-4 MM2TE Part #1801619-1  
RELAY 70A HOLDERTE Part #953631-1  
1W HSG DIESEL GLOW PLUGTE Part #1544340-4  
STRAIGHT RING TERMINAL DIA 6,5

## Documents

### Product Drawings

[1W HSG FOR DIESEL PLUG](#)

English

### CAD Files

[Customer View Model](#)

[ENG\\_CVM\\_CVM\\_953318-2\\_D.2d\\_dxf.zip](#)

English

[3D PDF](#)



3D

Customer View Model

[ENG\\_CVM\\_CVM\\_953318-2\\_D.3d\\_igs.zip](#)

English

Customer View Model

[ENG\\_CVM\\_CVM\\_953318-2\\_D.3d\\_stp.zip](#)

English

By downloading the CAD file I accept and agree to the [Terms and Conditions](#) of use.

---

### Product Specifications

[Product Specification](#)

French

---

### Product Environmental Compliance

[Product Compliance](#)

English

[Product Compliance](#)

English

---

### Instruction Sheets

[Instruction Sheet \(non U.S.\)](#)

French