

**METRIC**

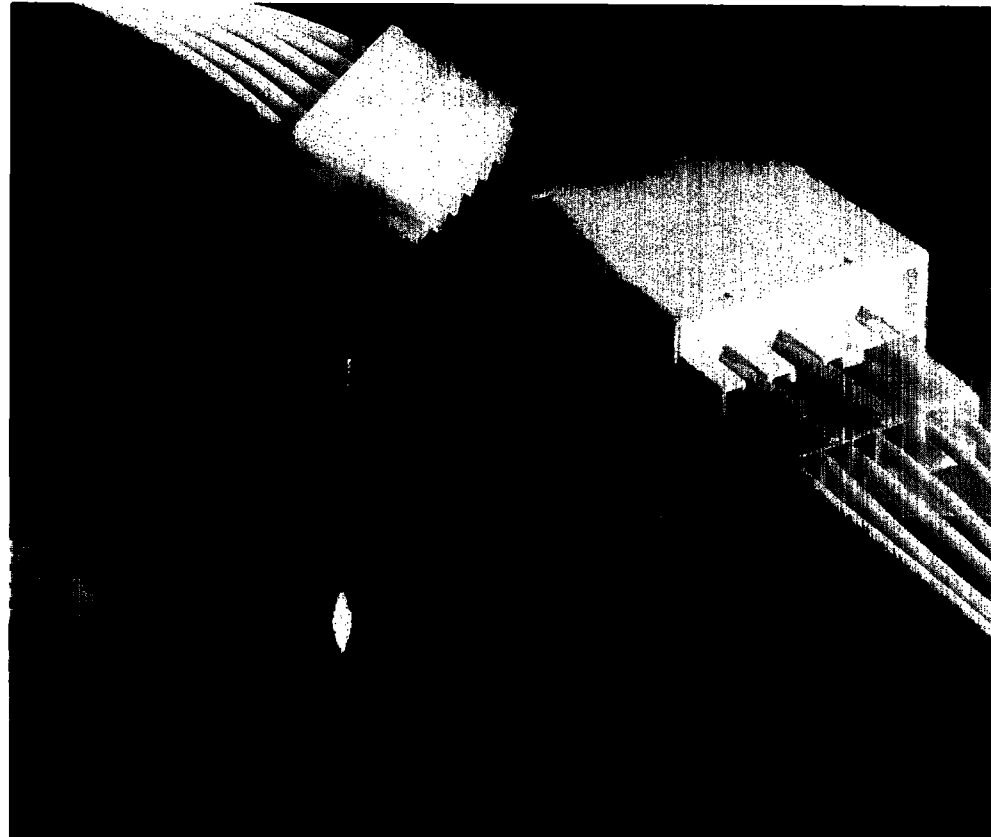
## AMP Standard-Timer and AMP Multifitting Connectors in In-Line Mating Technology

### Product Facts

- **Standard-Timer Housings and Contacts (crimp, snap-in)**
  - Housings available in 2 to 12 positions
  - Wire size ranges: 0.5-1.0, 0.75-1.5, and 1.0-2.5 mm<sup>2</sup>
  - Wire insulation diameter range: 2.0-3.3 mm [.079-.130]
  - Current carrying capacity up to 16A
  - Keying, Locking Latch and Polarization available
- **Multifitting Connectors (insulation displacement contacts)**
  - 2 to 12 positions
  - Wire size range: 0.5-0.75 mm<sup>2</sup>
  - Current carrying capacity up to 6A
  - Keying, Locking Latch and Polarization available
  - Wire insulation diameter range: 2.0-2.5 mm [.079 to .098]

### Approvals

- **Both Standard-Timer Connectors and AMP Multifitting Connectors are tested by VDE according to DIN VDE 0627/9.91, VDE-Reg.- No. 5129 and 3993, respectively**
- **Recognized under the Component Program of Underwriters Laboratories Inc., File No. E28476**



AMP Standard-Timer Connectors and AMP Multifitting Connectors represent modern interconnection technology with crimp snap-in or insulation displacement versions. They find applications in small motors, liquid pumps, automatic waterlevel regulators, relays or push-button switches. The selection of both connector systems allows you to find the optimal solution to your interconnection needs.

The AMP Standard Timer Connectors were designed for various applications in household appliances and automobiles.

They meet industry requirements, for example

multiple position connectors, secure connection even at inclined mating, as well as a sturdy contact design.

AMP Standard-Power-Timer contacts, for use with Standard-Timer housings, are suitable for high density and high current carrying requirements.

The modular connector system incorporates modern in-line mating technology on a 5 mm [.197] centerline, 2- to 12 positions, rowable with no loss of spacing and a variety of keying possibilities.

The AMP Multifitting Connector System was developed by AMP for economic and efficient cable harness production using newly developed AMP application tooling. This

connector system uses insulation displacement contacts: AMP Multifitting Connectors.

This system is suitable for termination of 0.5-0.75 mm<sup>2</sup> leads. The housing cover has two special functions providing reliable strain relief by independent locking in the housing, as well as allowing a 90° or 180° wire exit.

AMP Multifitting Connectors are fed into the machine from reels, saving time and money.

The new modular component connecting devices, 6.3 mm [.250 Series] or 4.8 mm [.187 Series] tabs are terminated quickly and easily.

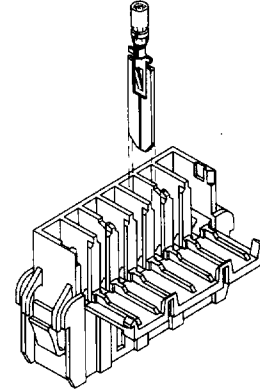
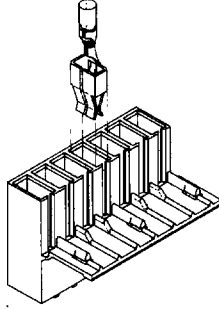
**METRIC**

**Standard-Timer Housings**  
5.0 mm [.197] Centerline

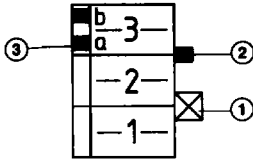
**Standard-Timer Housing**  
(with Interior Locking Device)

**Tab Housing**

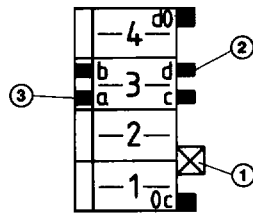
Mates with—Tab Housing



Keying Plan  
from Mating Direction  
of Standard-Timer Housing



Part No. 927740, 928343



Part No. 928151, 928344, 928423

No. of Positions	Color	Standard-Timer Housings			Part Number	RAST 5 Version	Mates with Tab Housing Part Number
		① Locking Latch between Cavity No.	② Keying Ribs between or at Cavity No.	③ Polarization Ribs go through to Hinge at Cavity No.			
2	natural	1 + 2	—	2 b	927740-2	—	—
	black	1 + 2	—	—	2-927740-2	—	—
	grey	—	1 + 2	2 b	4-927740-2	—	927742-2
	natural	1 + 2	1 0c/2 d0	1 b/2 a	928151-2	02—A	—
	black	1 + 2	10 c	1 a/2 b	2-928151-2	02—B	—
	brown	1 + 2	2 d0	1 a/1 b/2 b	3-928151-2	02—H	—
	turquoise	1 + 2	10 c/2 d0	1 b	4-928151-2	02—Q	—
	violet	1 + 2	2 d0	1 b/2 a/2 b	5-928151-2	02—G	—
	green	1 + 2	2 d0	1 a/2 b	6-928151-2	02—E	—
	black	1 + 2	2 d0	1 b/2 a/2 b	7-928151-2	(02—G)	—
	grey	1 + 2	1 0c	1 a/2 b	8-928151-2	(02—B)	—
	red	1 + 2	1 0c	1 b/2 b	9-928151-2	(02—I)	—
pink	1 + 2	1 0c	1 b/2 a	928423-2	02—O	—	
orange	1 + 2	1 0c	1 b/2 b	2-928423-2	02—I	—	
3	natural	1 + 2	2 + 3	1 a	927740-3	—	927742-3
	black	1 + 2	2 + 3	2 b	2-927740-3	—	—
	grey	1 + 2	2 + 3	3 a	3-927740-3	—	—
4	natural	2 + 3	3 + 4	3 b	927740-4	—	927742-4
	black	2 + 3	3 + 4	4 a	2-927740-4	—	—
5	natural	1 + 2/3 + 4	3 c/4 d0	1 b	928151-4	04—A	—
	grey	1 + 2/3 + 4	4 d0	1 a/4 b	3-928151-4	04—C	—
	natural	2 + 3	3 + 4	1 a/5 b	928343-5	—	927742-5
6	black	3 + 4	4 + 5	4 b	2-928343-5	—	—
	natural	3 + 4	1 + 2/4 + 5	6 b	927740-6	—	927742-6
	black	1 + 2/4 + 5	2 + 3	1 b	2-927740-6	—	—
7	natural	1 + 2/5 + 6	3 c/4 d	—	928151-6	06—A/S	—
	black	1 + 2/5 + 6	2 + 3/4 + 5/6 + 7	—	9-927740-7	—	2-927742-7
	natural	1 + 2/5 + 6	3 c/4 d/7 c	—	928151-7	07—A/S	—
	natural	1 + 2/5 + 6	2 + 3/4 + 5/6 + 7	—	928343-7	—	928309-7
	black	1 + 2/5 + 6	2 + 3/6 + 7	1 b	2-928343-7	—	—
8	natural	1 + 2/5 + 6	3 0 c/4 d0/7 0c	1 a/6 b	928344-7	—	928309-7
	natural	1 + 2/5 + 6	2 + 3/4 + 5/6 + 7	—	927740-8	—	928309-8
	black	1 + 2/5 + 6	2 + 3/6 + 7	—	2-927740-8	—	928230-8
9	grey	2 + 3/7 + 8	1 + 2/3 + 4/6 + 7	8 b	3-927740-8	—	—
	natural	5 + 6	2 + 3	1 b	927740-9	—	—
	brown	1 + 2/8 + 9	3 c	1 b/9 b	928151-9	—	—
11	natural	5 + 6	2 + 3	1 b/11 b	1-927740-1	—	—
12	natural	1 + 2/10 + 11	8 + 9	8 b	1-927740-2	—	—

Note: Order crimp, snap-in contacts separately, see Page 6037.

Blade-Type Connectors  
AMP Standard-Timer and AMP Multifitting Connectors in In-Line Mating Technology

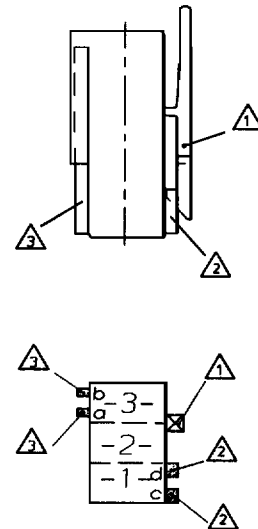
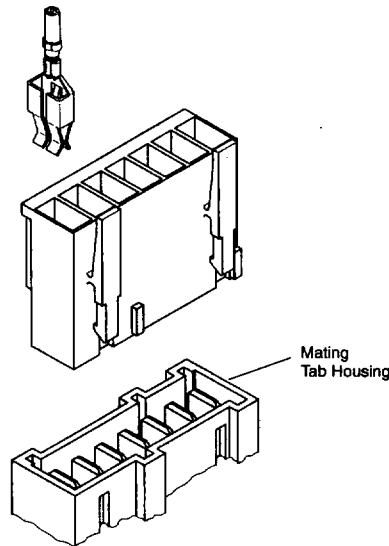
**Standard-Timer Housings**  
(Continued)  
5.0 mm [.197] Centerline

**METRIC**

**Standard-Timer Housing  
(with Exterior Locking Device)**

**Keying Plan  
from Side-View and Mating Direction  
of Standard-Timer Housings**

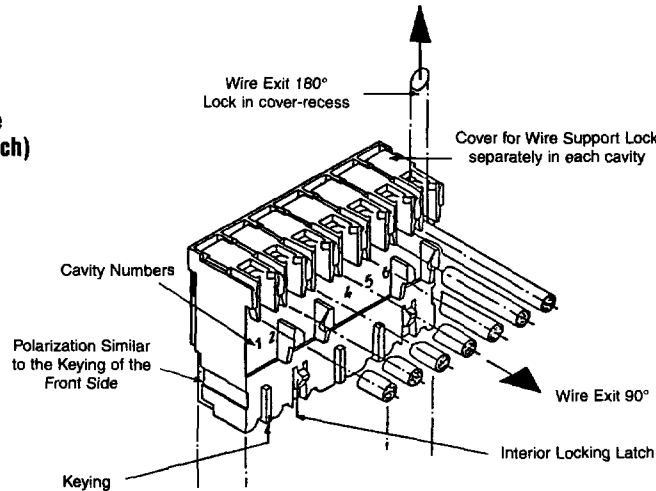
Mates with—Tab Housing



No of Positions	Color	Standard-Timer Housings			Part Number	RAST 5 Version
		① Locking Latch between Cavity No.	② Keying Ribs at Cavity No.	③ Polarization Ribs at Cavity No.		
2	black	1 + 2	1 c	1 a/2 b	928247-2	02—B
	pink	1 + 2	1 c	1 b/2 a	2-928247-2	02—O
	orange	1 + 2	1 c	1 b/2 b	3-928247-2	02—I
	yellow-green	1 + 2	1 c	1 a/2 a	4-928247-2	02—K
	green	1 + 2	2 d	1 a/2 b	5-928247-2	02—E
	natural	1 + 2	1 c/2 d	1 b/2 a	6-928247-2	02—A
	purple	1 + 2	1 c/2 d	2 b	7-928247-2	02—P
3	yellow	2 + 3	1 d/3 d	3 b	928247-3	—
4	grey	1 + 2/3 + 4	4 d	1 a/4 b	928247-4	04—C
	white	1 + 2/3 + 4	4 d	1 a/3 a	2-928247-4	04—F
	violet	1 + 2/3 + 4	2 d	2 a/4 b	3-928247-4	04—G
5	black	1 + 2/4 + 5	2 d	2 b	2-928247-5	05—B
	blue	1 + 2/4 + 5	3 d	1 a/4 a	3-928247-5	05—D
	yellow	1 + 2/3 + 4	5 c/5 d	3 b	4-928247-5	—
6	grey	1 + 2/5 + 6	4 c	1 b/6 a	928247-6	06—C
	blue	1 + 2/5 + 6	4 d	2 b/6 b	2-928247-6	06—D
	green	1 + 2/5 + 6	4 d	1 a/6 b	3-928247-6	06—E
	yellow	1 + 2/5 + 6	3 c	1 b/6 a	4-928247-6	—
	brown	1 + 2/5 + 6	3 c	—	5-928247-6	—
7	grey	1 + 2/6 + 7	3 d/7 d	5 b	928247-7	07—C
	yellow	2 + 3/7 + 8	2 c/8 d	5 a	928247-9	—
9	blue	1 + 2/6 + 7	3 d/7 d	5 b	2-928247-9	09—D
	brown	3 + 4/7 + 8	6 c	3 b/8 a	3-928247-9	—
10	brown	3 + 4/8 + 9	3 c/9 d	1 b	1-928247-0	—
11	yellow	3 + 4/8 + 9	3 c/9 d	1 b/11 b	1-928247-1	11—B
	blue	3 + 4/7 + 8	3 c/9 d	1 b/11 b	2-928247-1	—

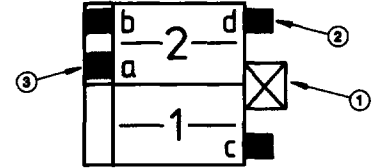
### AMP Multifitting Connectors

5.0 mm [.197] Centerline  
(with Interior Locking Latch)



**METRIC**

Keying Plan from Mating Direction of Connector



#### Insulation Displacement Connectors

No. of Positions	Color	Keying			Part Number (for 6 A)	RAST 5 Version	Mates with Tab Housing Part Number
		① Locking Latch between Cavity No.	② Keying Ribs at Cavity No.	③ Polarization Ribs at Cavity No.			
2	natural	1 + 2	1 c/2 d	1 b/2 a	828353-2	02-A	—
	black	1 + 2	1 c	1 a/2 b	2-828353-2	02-B	—
	grey	1 + 2	1 c/2 d	2 a	3-828353-2	02-C	—
	blue	1 + 2	1 c	1 a/1 b	4-828353-2	02-D	—
	green	1 + 2	2 d	1 a/2 b	5-828353-2	02-E	—
	yellow	1 + 2	—	2 b	6-828353-2	02-L	—
	violet	1 + 2	2 d	1 b/2 a/2 b	7-828353-2	02-G	—
	brown	1 + 2	2 d	1 a/1 b/2 b	8-828353-2	02-H	—
	orange	1 + 2	1 c	1 b/2 b	9-828353-2	02-I	—
	beige	1 + 2	2 d	1 a/1 b	829212-2	02-N	—
	pink	1 + 2	1 c	1 b/2 a	2-829212-2	02-O	—
	purple	1 + 2	1 c/2 d	2 b	3-829212-2	02-P	—
	turquoise	1 + 2	1 c/2 d	1 b	4-829212-2	02-Q	—
	3	natural	1 + 2	1 c/2 d	1 b	828353-3	03-A
black		2 + 3	1 d/2 c	2 b/3 b	2-828353-3	03-B	—
grey		1 + 2	1 c	1 b/3 a	3-828353-3	03-C	—
blue		1 + 2	3 c	1 a	4-828353-3	03-D	927742-3
green		1 + 2	3 d	1 a/1 b	5-828353-3	03-E	—
brown		1 + 2	2 d	2 b	6-828353-3	03-H	927742-3
violet		1 + 2	1 c	1 a/3 a	7-828353-3	03-G	—
orange		1 + 2	2d	1 a	8-828353-3	—	—
natural		1 + 2	1 c	1 a	9-828353-3	—	—
4		natural	1 + 2/3 + 4	3 c/4 d	1 b	828353-4	04-A
	grey	1 + 2/3 + 4	4 d	1 a/4 b	2-828353-4	04-C	—
	blue	2 + 3	3 d	3 b	3-828353-4	04-D	927742-4
	green	1 + 2/3 + 4	2 d/3 c	1 a/3 a	5-828353-4	04-E	—
5	natural	2 + 3	1 c/3 d	1 a/5 b	828353-5	05-A	927742-5
	black	1 + 2/4 + 5	2 d	2 b	2-828353-5	05-B	—
	natural	1 + 2/4 + 5	2 d	2 b	9-828353-5	—	—
6	natural	1 + 2/4 + 5	3 c/6 d	1 b	828353-6	06-A	—
	black	1 + 2/4 + 5	3 c	1 b	2-828353-6	06-B	—
7	natural	1 + 2/5 + 6	3 c/4 d/7 c	—	828353-7	07-A	927742-7
	black	1 + 2/5 + 6	3 c/7 c	1 a/4 a	2-828353-7	—	—
8	grey	2 + 3/7 + 8	2 c/3 d/7 c	8 b	828353-8	08-C	—
	natural	1 + 2/7 + 8	2 d	—	2-828353-8	—	—
9	natural	5 + 6	3 c	1 b	828353-9	09-A	—
	black	4 + 5	3 c/6 d	1 b	2-828353-9	09-B	—
10	natural	5 + 6	3 c	1 b	1-828353-0	10-A	—
11	natural	5 + 6	3 c	1 b/11 b	1-828353-1	11-A	—

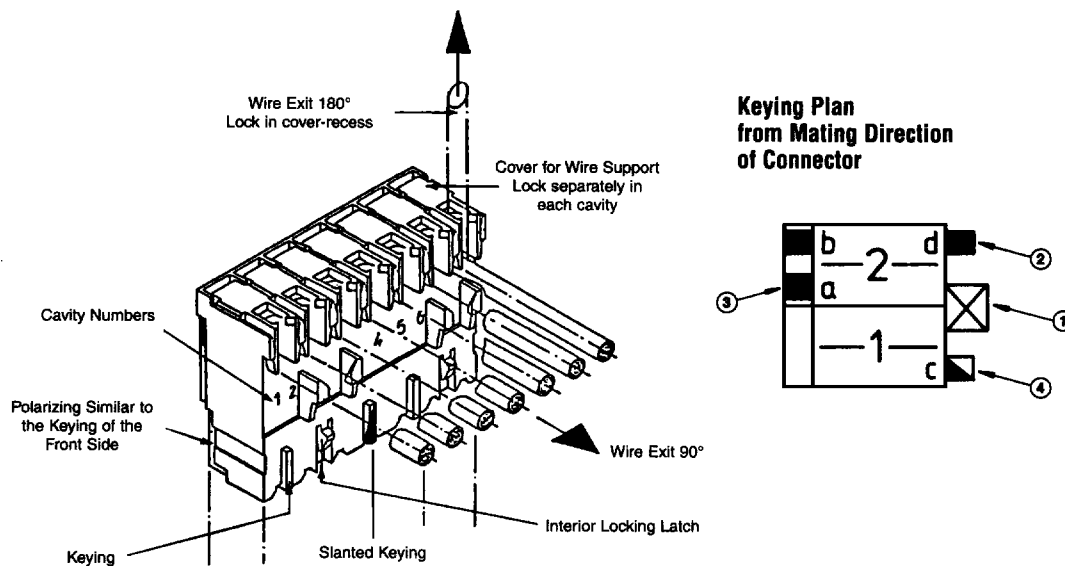
6 Blade-Type Connectors AMP Standard-Timer and AMP Multifitting Connectors in In-Line Mating Technology

**METRIC**

## AMP Multifitting Connectors

(Continued)

### 5.0 mm [.197] Centerline (Motor Connector)



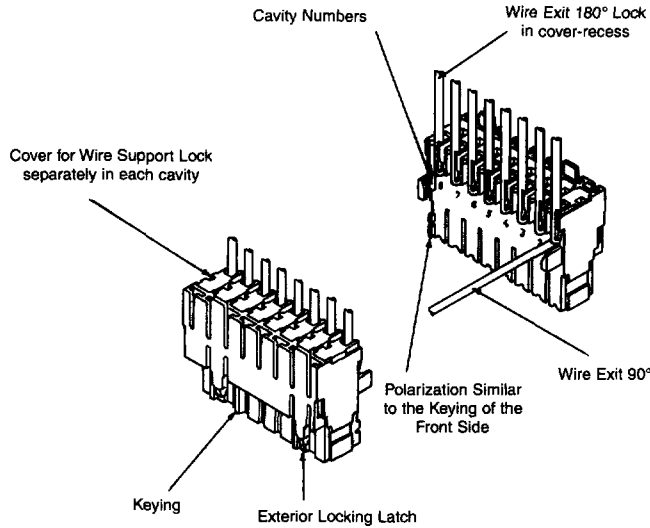
No. of Positions	Color	Insulation Displacement Connectors				Part Number (for 6 A)	RAST 5 Version	Mates with Tab Housing Part Number
		① Locking Latch between Cavity No.	② Keying Ribs at Cavity No.	③ Polarization Ribs at Cavity No.	④ Slanted Keying			
2	natural	—	—	2 b	2 c	829343-2	02—L/S	927742-2
6	natural	1 + 2/5 + 6	3 c	1 a/6 b	4 d	829343-6	06—A/S	928309-7
	natural	1 + 2/5 + 6	—	6 b	4 d	2-829343-6	—	—
7	natural	1 + 2/5 + 6	3 c/7 c	—	4 d	829343-7	07—A/S	928309-7

**METRIC**

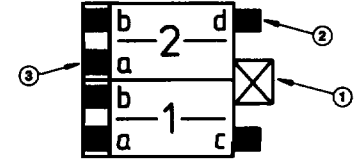
**AMP Multifitting  
Connectors**

(Continued)

**5.0 mm [.197] Centerline  
(with Exterior Locking)**



**Keying Plan  
from Mating Direction  
of Connector**

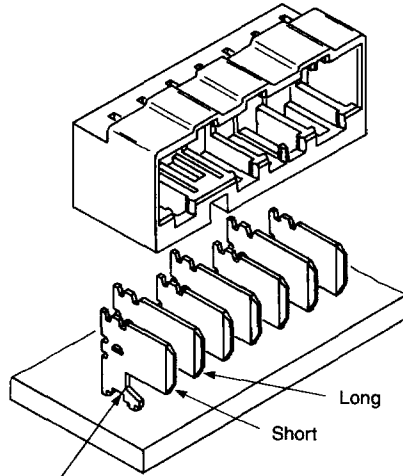


6 Blade-Type Connectors AMP Standard-Timer and AMP Multifitting Connectors in In-Line Mating Technology

No. of Positions	Color	Insulation Displacement Connectors			Part Number	RAST 5 Version
		① Locking Latch between Cavity No.	② Keying Ribs at Cavity No.	③ Polarization Ribs at Cavity No.		
2	natural	1 + 2	1 c	variable	828348-2	—
	blue	1 + 2	1 c/2 d	variable	2-828348-2	—
	grey	1 + 2	2 d	variable	3-828348-2	—
	violet	1 + 2	2 d	variable	8-828348-2	—
	black	1 + 2	1 c	1 a/2 b	2-829532-2	02—B
	blue	1 + 2	1 c	1 a/1 b	4-829532-2	02—D
	green	1 + 2	2 d	1 a/2 b	5-829532-2	02—E
	orange	1 + 2	1 c	1 b/2 b	9-829532-2	02—I
	beige	1 + 2	2 d	1 a/1 b	8-829532-2	02—N
3	natural	2 + 3	1 d/2 c	variable	828348-3	—
	blue	2 + 3	2 c	variable	2-828348-3	—
	grey	2 + 3	1 c/3 d	variable	3-828348-3	—
	green	1 + 2	3 d	variable	4-828348-3	—
	yellow	2 + 3	1 d/3 d	variable	5-828348-3	—
	brown	1 + 2	2 d	variable	9-828348-3	—
	natural	1 + 2	1 c/2 d	1 b	829532-3	03—A
	violet	1 + 2	1 c	1 a/3 a	7-829532-3	03—G
	natural	1 + 2	2 d	1 b	8-829532-3	—
4	natural	1 + 2/3 + 4	2 d	variable	828348-4	—
	blue	1 + 2/3 + 4	4 d	variable	2-828348-4	—
	grey	1 + 2/3 + 4	3 c	variable	3-828348-4	—
	yellow	1 + 2/3 + 4	2 d	variable	5-828348-4	—
	green	1 + 2	2 d	variable	6-828348-4	—
	violet	1 + 2/3 + 4	3 c	variable	8-828348-4	—
5	natural	1 + 2/4 + 5	2 d/3 d/4 c/5 d	variable	828348-5	—
	blue	1 + 2/4 + 5	3 c	variable	2-828348-5	—
	grey	1 + 2/4 + 5	3 d	variable	3-828348-5	—
	orange	1 + 2/4 + 5	3 c	variable	7-828348-5	—
6	natural	1 + 2/5 + 6	4 c/4 d	variable	828348-6	—
	blue	1 + 2/5 + 6	3 c/6 d	variable	2-828348-6	—
	grey	2 + 3/4 + 5	1 d/6 c	variable	3-828348-6	—
7	natural	1 + 2/5 + 6	2 d/6 d	variable	828348-7	—
	blue	2 + 3/6 + 7	5 c	variable	2-828348-7	—
	beige	1 + 2/5 + 6	2 d, 6 d	variable	5-828348-7	—
8	natural	1 + 2/7 + 8	2 d/3 c/6 d/7 c	variable	828348-8	—
	blue	1 + 2/7 + 8	3 c/6 d	variable	2-828348-8	—
11	natural	3 + 4/7 + 8	3 c/9 d	variable	1-828348-1	—

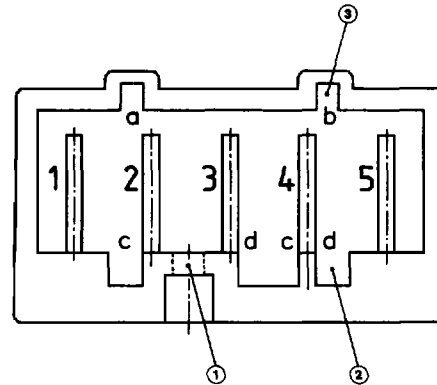
**METRIC**

**AMP Multifitting Connectors**  
(Continued)  
5.0 mm [.197] Centerline



Solder Tabs 6.3 x 0.8 mm [.250 Series]  
Part No. 964016-2 (long)  
Part No. 964017-2 (short)

**Keying Plan from Mating Direction of Tab Header Housing**



**Tab Header Housings**

No. of Positions	Tab Header Housings			Part Number
	① Locking Window between Cavity No.	② Keying Slot at Cavity No.	③ Polarization Slot at Cavity No.	
2	1 + 2	1 c/2 d	2 a	928492-2
7	1 + 2/4 + 5/6 + 7	3 c/5 d/6 c	1 a/4 a/5 b/6 a/7b	928492-7
9	1 + 2/4 + 5/6 + 7/8 + 9	2 d/6 c/7 d/9 d	2 b/6 a/6 b/7 a/8 a/9 b	928492-9
12	1 + 2/4 + 5/8 + 9/11 + 12	1 c/5 d/ 9d	1 a/2 b/5 b/9 b	1-928492-2

Note: Order Solder Tabs separately, see above.

**Pc Board Tabs**  
6.3 x 0.8 mm [.250 Series]  
Part No. 928814-4

**Standard-Timer Contacts and Standard-Power-Timer Contacts**



Description	Style	Wire Size Range (mm <sup>2</sup> )	Material	Finish	Part Number
Standard-Timer	A	0.5-1.5	Brass	tin plated	926005-1 <sup>1</sup>
	B	1.0-2.5	Brass	tin plated	926006-1 <sup>1</sup>
	C	0.5-1.0	Brass	tin plated	928820-1
		0.5-1.5	Brass	tin plated	926965-1 <sup>1</sup>
Standard-Power-Timer	D	>1.0-2.5 (FLK Ins.)	Copper Iron	tin plated	927833-1
		>1.02.5 (FLR Ins.)	Copper Iron	tin plated	927837-1

<sup>1</sup>Strip Form

**FASTIN-FASTON Tabs**  
6.3 mm [.250 Series]



Style	Wire Size Range (mm <sup>2</sup> )	Material	Finish	Part Number
E	0.3-0.8	Brass	tin plated	60294-2
F	0.1-0.6	Brass	tin plated	141051-2

Note: For Magnet Wire Diameter 0.36-0.87 mm

6  
Blade-Type Connectors  
AMP Standard-Timer and AMP Multifitting Connectors in In-Line Mating Technology