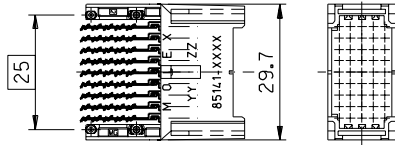
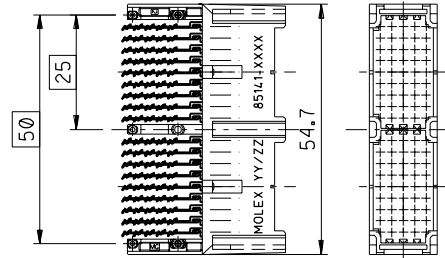


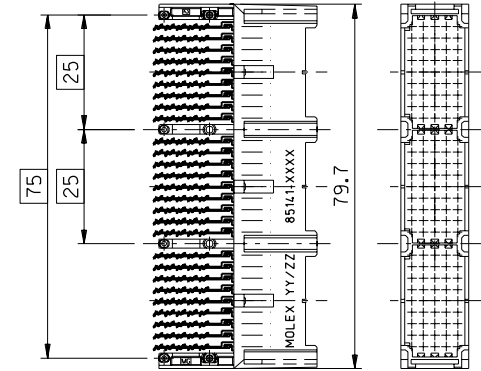
1 SU M 1:1



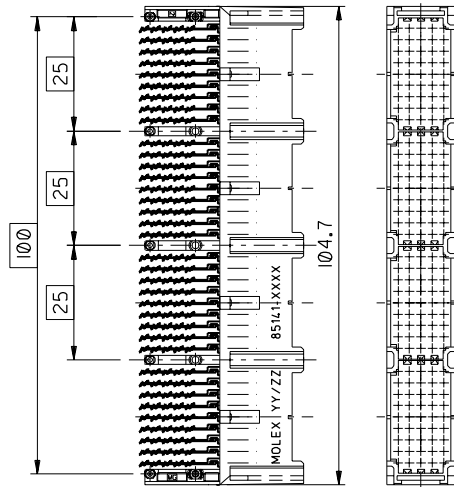
2 SU M 1:1



3 SU M 1:1

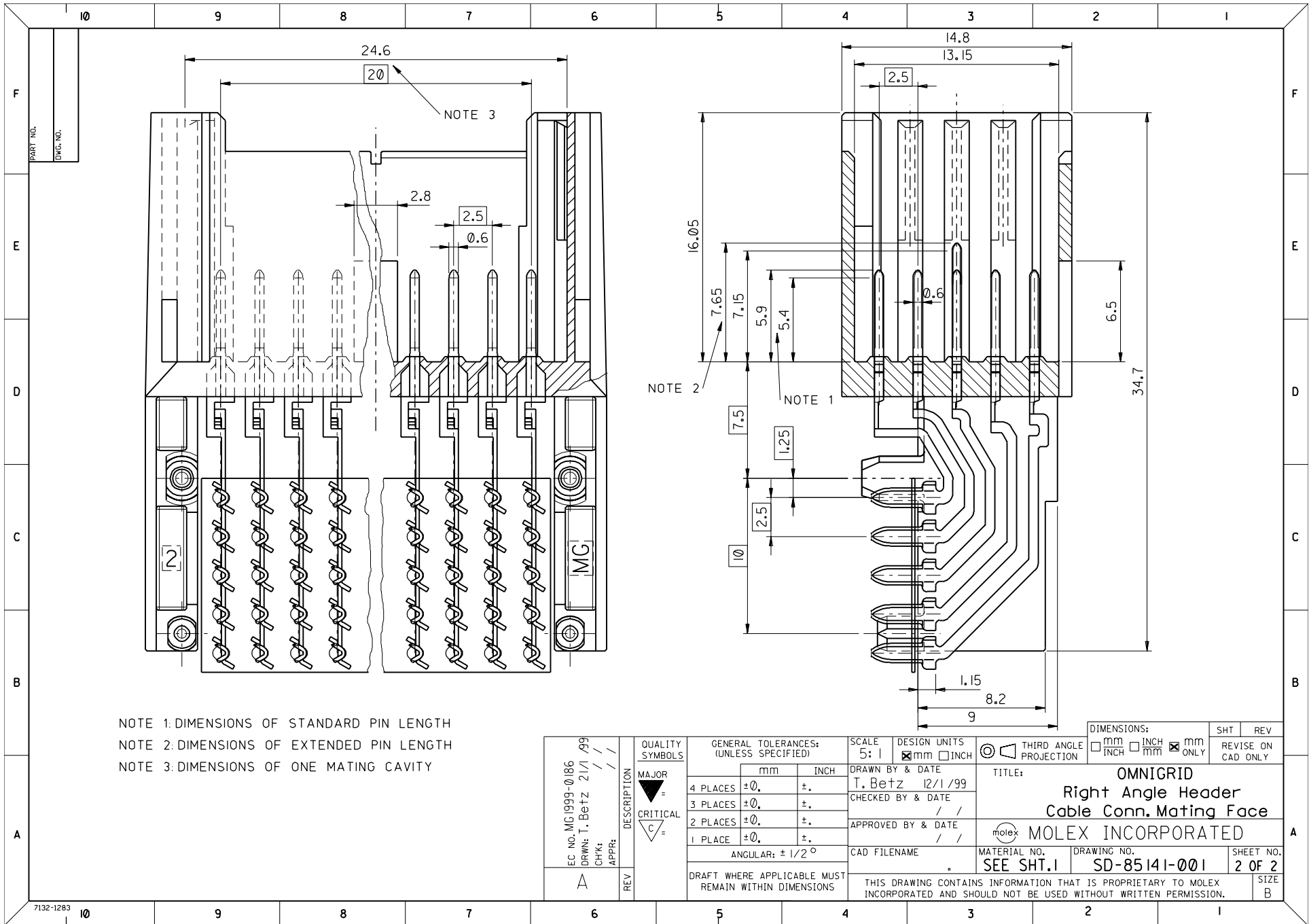


4 SU M 1:1



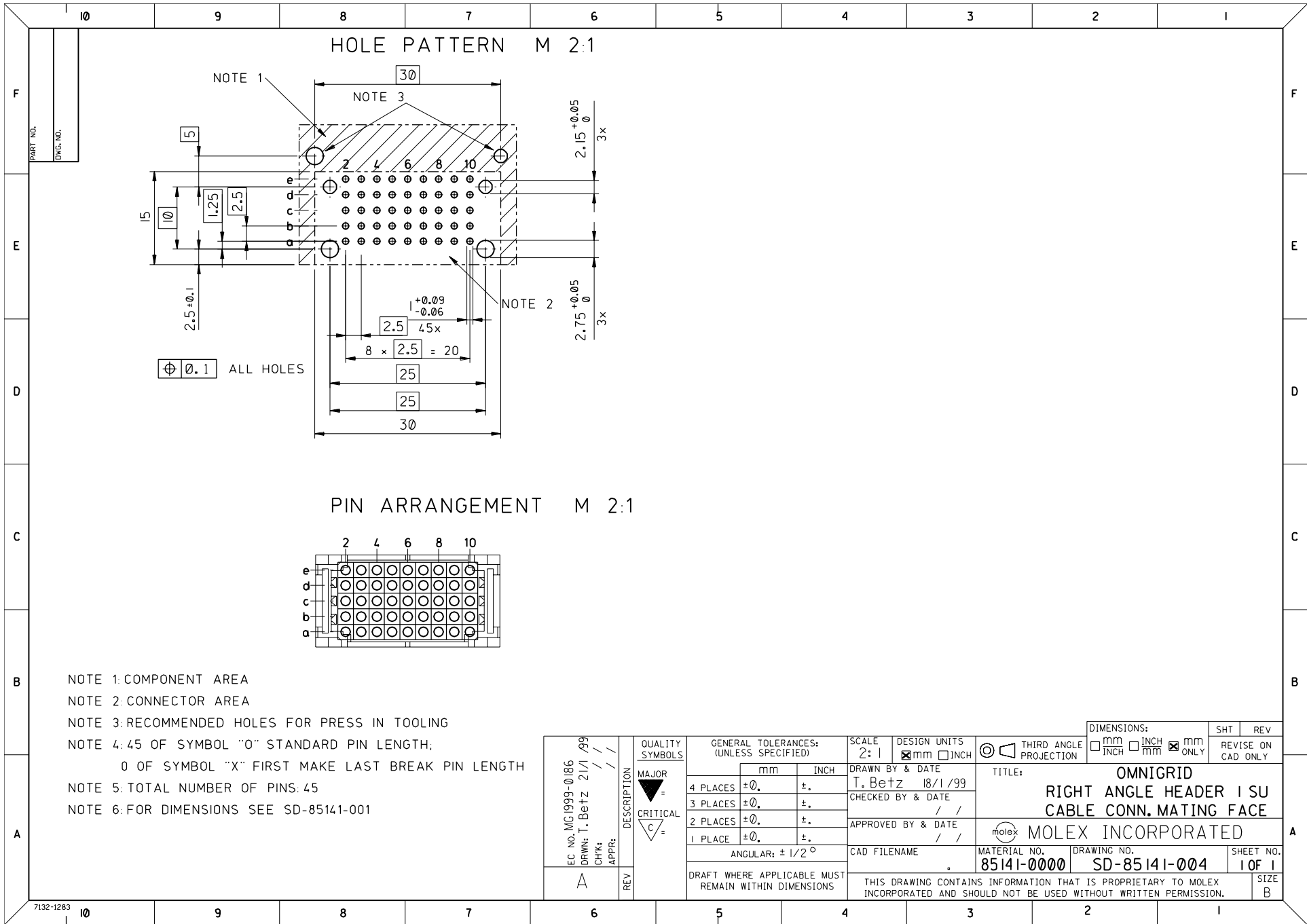
- Note 1: Labeling: 85141-XXXX = material number, YY/ZZ = Year/Week
- Note 2: For material numbers of parts see individual drawing of part
- Note 3: For dimensions see SD-85141-001 sheet 2
- Note 4: For pin arrangement and drilling pattern see individual drawing of part
- Note 5: Housing material: Polycarbonate; Contact material Phosphorbronze
- Note 6: Termination area SnPb plated
- Note 7: Mating pin area Au plated, performance level 1
- Note 8: Mating face to mate with OMNIGRID cable connector

EC NO. MC1999-0186 DRWN: T. Betz 2/1/99 CHK: / / / APPR: / / /	DESCRIPTION MAJOR = CRITICAL = C =	QUALITY SYMBOLS	GENERAL TOLERANCES: (UNLESS SPECIFIED)		SCALE 1:1	DESIGN UNITS <input checked="" type="checkbox"/> mm <input type="checkbox"/> INCH	THIRD ANGLE PROJECTION 	DIMENSIONS: <input type="checkbox"/> mm <input type="checkbox"/> INCH <input checked="" type="checkbox"/> mm ONLY	SHT REV	
			4 PLACES ±0. ±. 3 PLACES ±0. ±. 2 PLACES ±0. ±. 1 PLACE ±0. ±. ANGULAR: ± 1/2°	DRAWN BY & DATE T. Betz 12/1/99	TITLE: OMNIGRID Right Angle Header Cable Conn. Mating Face			APPROVED BY & DATE / /	MATERIAL NO. See Note 2	DRAWING NO. SD-85141-001
A	REV	DRAFT WHERE APPLICABLE MUST REMAIN WITHIN DIMENSIONS	CAD FILENAME				THIS DRAWING CONTAINS INFORMATION THAT IS PROPRIETARY TO MOLEX INCORPORATED AND SHOULD NOT BE USED WITHOUT WRITTEN PERMISSION.			SIZE B



NOTE 1: DIMENSIONS OF STANDARD PIN LENGTH
 NOTE 2: DIMENSIONS OF EXTENDED PIN LENGTH
 NOTE 3: DIMENSIONS OF ONE MATING CAVITY

EC NO. MC1999-0186 DRWN: T. Betz 2/1/99 CHK: / / APPR: / /	QUALITY SYMBOLS MAJOR = CRITICAL = C =	GENERAL TOLERANCES: (UNLESS SPECIFIED)		SCALE 5: 1	DESIGN UNITS <input checked="" type="checkbox"/> mm <input type="checkbox"/> INCH	THIRD ANGLE PROJECTION	DIMENSIONS: <input type="checkbox"/> mm <input type="checkbox"/> INCH <input checked="" type="checkbox"/> mm ONLY	SHT REV
		mm INCH	DRAWN BY & DATE T. Betz 12/1/99	TITLE: OMNIGRID Right Angle Header Cable Conn. Mating Face		CHECKED BY & DATE / /	APPROVED BY & DATE / /	MATERIAL NO. SEE SHT.1
REV A	DESCRIPTION / / / /	ANGULAR: ± 1/2°		CAD FILENAME	MOLEX INCORPORATED	THIS DRAWING CONTAINS INFORMATION THAT IS PROPRIETARY TO MOLEX INCORPORATED AND SHOULD NOT BE USED WITHOUT WRITTEN PERMISSION.	SIZE B	



- NOTE 1: COMPONENT AREA
 NOTE 2: CONNECTOR AREA
 NOTE 3: RECOMMENDED HOLES FOR PRESS IN TOOLING
 NOTE 4: 45 OF SYMBOL "O" STANDARD PIN LENGTH;
 O OF SYMBOL "X" FIRST MAKE LAST BREAK PIN LENGTH
 NOTE 5: TOTAL NUMBER OF PINS: 45
 NOTE 6: FOR DIMENSIONS SEE SD-85141-001

EC NO. MC1999-0186 DRWN: T. Betz 21/1/99 CHK: / / / APPR: / / / A	DESCRIPTION MAJOR = CRITICAL = C =	GENERAL TOLERANCES: (UNLESS SPECIFIED)		SCALE 2:1	DESIGN UNITS <input checked="" type="checkbox"/> mm <input type="checkbox"/> INCH	THIRD ANGLE PROJECTION	DIMENSIONS: <input type="checkbox"/> mm <input type="checkbox"/> INCH <input checked="" type="checkbox"/> mm ONLY	SHT REV	
		4 PLACES ±0. ±. 3 PLACES ±0. ±. 2 PLACES ±0. ±. 1 PLACE ±0. ±. ANGULAR: ± 1/2°	DRAWN BY & DATE T. Betz 18/1/99	TITLE: OMNIGRID RIGHT ANGLE HEADER 1 SU CABLE CONN. MATING FACE		CHECKED BY & DATE / /	APPROVED BY & DATE / /	MOLEX INCORPORATED	
DRAFT WHERE APPLICABLE MUST REMAIN WITHIN DIMENSIONS	CAD FILENAME		MATERIAL NO. 85141-0000	DRAWING NO. SD-85141-004	SHEET NO. 1 OF 1		THIS DRAWING CONTAINS INFORMATION THAT IS PROPRIETARY TO MOLEX INCORPORATED AND SHOULD NOT BE USED WITHOUT WRITTEN PERMISSION.		SIZE B