



M-01

# 91 SEALED SERIES

## Features

The 91 sealed connector series (RS type) is a new, improved connector that integrates the conventional 58 sealed series (W type) and the 62 sealed series (Z type).

This series consists of a 090 type classified according to terminal size, supporting use in a variety of control circuits and low power circuits.

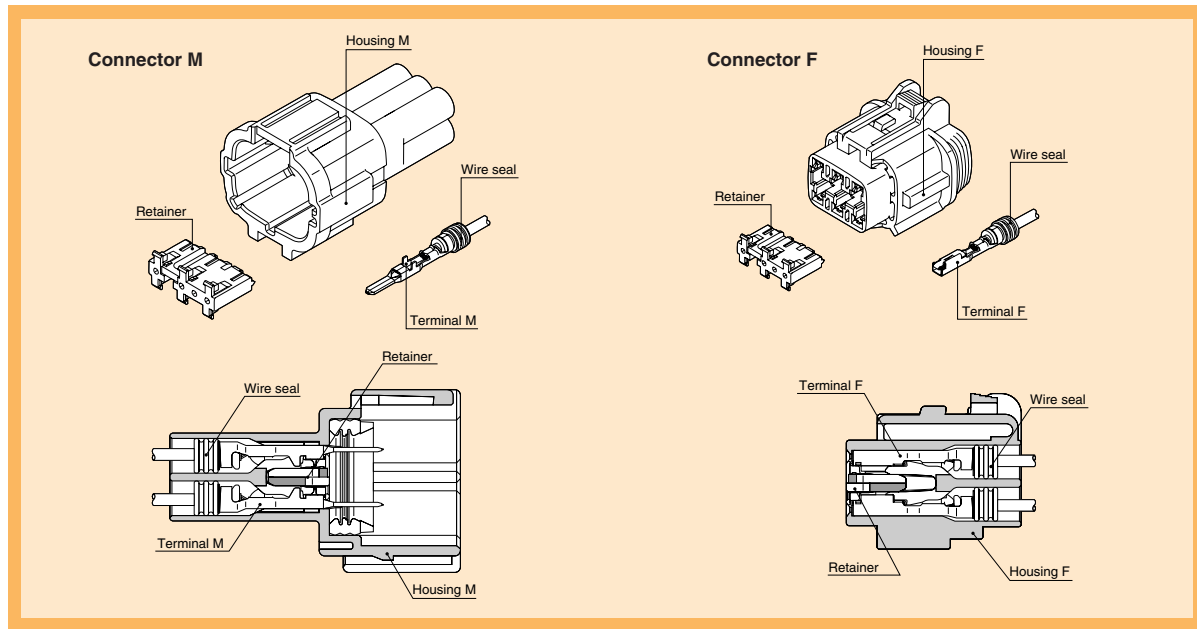
- Semi-engagement detectable connectors and multi-way & light insertion connectors are available.
- The RS-standard type connectors adopt an inertia locking system to prevent semi-engagement (this system is not incorporated in some connectors).  
\*Please contact our sales representative for product numbers.
- The RS-BD and E-BD type connectors feature a semi-engagement detection & locking system that uses a spring to return a semi-engaged connector back to the disengaged position.

# 91 SEALED SERIES

090(2.3 mm) / STANDARD RS

090 terminal size sealed connector for connector seal M integrates both the former W type of 58 Sealed Series and the former Z type of 62 Sealed Series.

## Structure

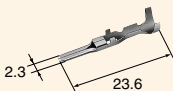


M-02

## Terminal (UNIT: mm)

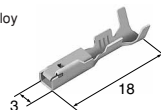
|                               |            |
|-------------------------------|------------|
| Cable size (mm <sup>2</sup> ) | 0.3~0.5    |
| Material                      | Brass      |
| Surface treatment             | Tin-plated |
| Reel (piece)                  | 3500       |
| Thickness (mm)                | 0.25       |

(Tab thickness : 0.64)



**M(8100-3803)**

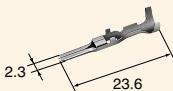
|                               |                             |
|-------------------------------|-----------------------------|
| Cable size (mm <sup>2</sup> ) | 0.3~0.5                     |
| Material                      | Heat resistant copper alloy |
| Surface treatment             | Tin-plated                  |
| Reel (piece)                  | 3500                        |
| Thickness (mm)                | 0.25                        |



**F(8100-3807)**

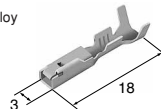
|                               |             |
|-------------------------------|-------------|
| Cable size (mm <sup>2</sup> ) | 0.3~0.5     |
| Material                      | Brass       |
| Surface treatment             | Gold-plated |
| Reel (piece)                  | 3500        |
| Thickness (mm)                | 0.25        |

(Tab thickness : 0.64)



**M(8100-3805)**

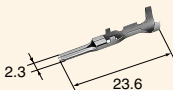
|                               |                             |
|-------------------------------|-----------------------------|
| Cable size (mm <sup>2</sup> ) | 0.3~0.5                     |
| Material                      | Heat resistant copper alloy |
| Surface treatment             | Gold-plated                 |
| Reel (piece)                  | 3500                        |
| Thickness (mm)                | 0.25                        |



**F(8100-3809)**

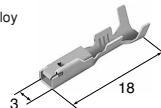
|                               |            |
|-------------------------------|------------|
| Cable size (mm <sup>2</sup> ) | 0.85~1.25  |
| Material                      | Brass      |
| Surface treatment             | Tin-plated |
| Reel (piece)                  | 3500       |
| Thickness (mm)                | 0.25       |

(Tab thickness : 0.64)



**M(8100-3804)**

|                               |                             |
|-------------------------------|-----------------------------|
| Cable size (mm <sup>2</sup> ) | 0.85~1.25                   |
| Material                      | Heat resistant copper alloy |
| Surface treatment             | Tin-plated                  |
| Reel (piece)                  | 3500                        |
| Thickness (mm)                | 0.25                        |



**F(8100-3808)**

090  
RS (S)

090  
RS (M)

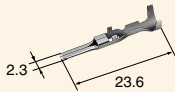
# 91 SEALED SERIES

090(2.3 mm) / STANDARD RS

090  
RS (M)

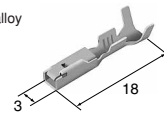
|                               |             |
|-------------------------------|-------------|
| Cable size (mm <sup>2</sup> ) | 0.85~1.25   |
| Material                      | Brass       |
| Surface treatment             | Gold-plated |
| Reel (piece)                  | 3500        |
| Thickness (mm)                | 0.25        |

(Tab thickness : 0.64)



**M(8100-3806)**

|                               |                             |
|-------------------------------|-----------------------------|
| Cable size (mm <sup>2</sup> ) | 0.85~1.25                   |
| Material                      | Heat-resistant copper alloy |
| Surface treatment             | Gold-plated                 |
| Reel (piece)                  | 3500                        |
| Thickness (mm)                | 0.25                        |

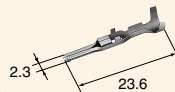


**F(8100-3810)**

090  
RS (L)

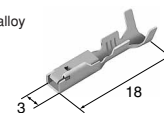
|                               |            |
|-------------------------------|------------|
| Cable size (mm <sup>2</sup> ) | 2.0        |
| Material                      | Brass      |
| Surface treatment             | Tin-plated |
| Reel (piece)                  | 3500       |
| Thickness (mm)                | 0.25       |

(Tab thickness : 0.64)



**M(8100-4172)**

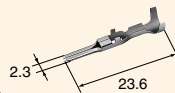
|                               |                             |
|-------------------------------|-----------------------------|
| Cable size (mm <sup>2</sup> ) | 2.0                         |
| Material                      | Heat-resistant copper alloy |
| Surface treatment             | Tin-plated                  |
| Reel (piece)                  | 3500                        |
| Thickness (mm)                | 0.25                        |



**F(8100-4174)**

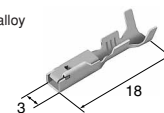
|                               |             |
|-------------------------------|-------------|
| Cable size (mm <sup>2</sup> ) | 2.0         |
| Material                      | Brass       |
| Surface treatment             | Gold-plated |
| Reel (piece)                  | 3500        |
| Thickness (mm)                | 0.25        |

(Tab thickness : 0.64)



**M(8100-4173)**

|                               |                             |
|-------------------------------|-----------------------------|
| Cable size (mm <sup>2</sup> ) | 2.0                         |
| Material                      | Heat-resistant copper alloy |
| Surface treatment             | Gold-plated                 |
| Reel (piece)                  | 3500                        |
| Thickness (mm)                | 0.25                        |



**F(8100-4175)**

M-03

## Wire seals (UNIT: mm)

Material / Silicone

● The wire seals are common to M and F.

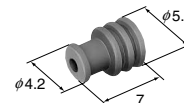
090  
RS

|                               |                                |
|-------------------------------|--------------------------------|
| Cable size (mm <sup>2</sup> ) | (AVSS / 0.3) (CAVUS / 0.3~0.5) |
| Cable overall diameter (mm)   | 1.0~1.4                        |
| Color                         | Orange                         |



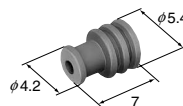
US Type **(7165-0474)**

|                               |                                       |
|-------------------------------|---------------------------------------|
| Cable size (mm <sup>2</sup> ) | (AVSS / 0.5~0.85) (CAVUS / 0.85~1.25) |
| Cable overall diameter (mm)   | 1.5~1.9                               |
| Color                         | Light Blue                            |



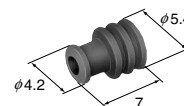
S Type **(7165-0473)**

|                               |               |
|-------------------------------|---------------|
| Cable size (mm <sup>2</sup> ) | (AVSS / 1.25) |
| Cable overall diameter (mm)   | 2.0~2.4       |
| Color                         | Violet        |



M Type **(7165-0472)**

|                               |              |
|-------------------------------|--------------|
| Cable size (mm <sup>2</sup> ) | (AVSS / 2.0) |
| Cable overall diameter (mm)   | 2.5~2.9      |
| Color                         | Light Green  |



L Type **(7165-0471)**

# 91 SEALED SERIES

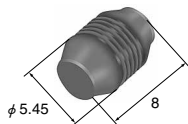
090(2.3 mm) / STANDARD RS

## Dummy plugs (UNIT: mm)

- Dummy plugs are common to M and F.
- Dummy plugs are used to blind unused terminal holes.

090  
RS

|          |          |
|----------|----------|
| Material | Silicone |
| Color    | Blue     |



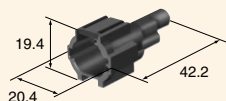
(7165-1131)

## Housing (UNIT: mm)

Material / P.B.T.

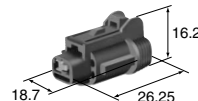
1way

|                        |      |
|------------------------|------|
| Ref: Terminal part No. | M-02 |
| Ref: Wire seal No.     | M-03 |
| Ref: Dummy plug No.    | M-04 |



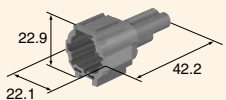
Retainer No. (6918-1773) **M(6188-0551)** RS 01 MB

|                        |      |
|------------------------|------|
| Ref: Terminal part No. | M-02 |
| Ref: Wire seal No.     | M-03 |
| Ref: Dummy plug No.    | M-04 |



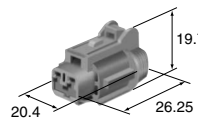
Retainer No. (6918-1773) **F(6185-0862)** RS 01 FB

|                        |      |
|------------------------|------|
| Ref: Terminal part No. | M-02 |
| Ref: Wire seal No.     | M-03 |
| Ref: Dummy plug No.    | M-04 |



Retainer No. (6918-1774) **M(6188-0554)** RS 02 MGY

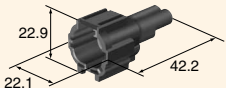
|                        |      |
|------------------------|------|
| Ref: Terminal part No. | M-02 |
| Ref: Wire seal No.     | M-03 |
| Ref: Dummy plug No.    | M-04 |



Retainer No. (6918-1774) **F(6185-0867)** RS 02 FGY

2way

|                        |      |
|------------------------|------|
| Ref: Terminal part No. | M-02 |
| Ref: Wire seal No.     | M-03 |
| Ref: Dummy plug No.    | M-04 |



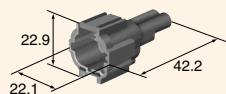
Retainer No. (6918-1774) **M(6188-0552)** RS 02 MB

|                        |      |
|------------------------|------|
| Ref: Terminal part No. | M-02 |
| Ref: Wire seal No.     | M-03 |
| Ref: Dummy plug No.    | M-04 |



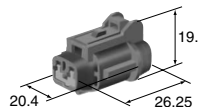
Retainer No. (6918-1774) **F(6185-0865)** RS 02 FB

|                        |      |
|------------------------|------|
| Ref: Terminal part No. | M-02 |
| Ref: Wire seal No.     | M-03 |
| Ref: Dummy plug No.    | M-04 |



Retainer No. (6918-1774) **M(6188-0553)** RS 02 MBR  
**M(6188-0663)** RS 02 MBR-DGY

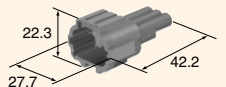
|                        |      |
|------------------------|------|
| Ref: Terminal part No. | M-02 |
| Ref: Wire seal No.     | M-03 |
| Ref: Dummy plug No.    | M-04 |



Retainer No. (6918-1774) **F(6185-0866)** RS 02 FBR  
**F(6185-1101)** RS 02 FBR-DGY

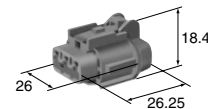
3way

|                        |      |
|------------------------|------|
| Ref: Terminal part No. | M-02 |
| Ref: Wire seal No.     | M-03 |
| Ref: Dummy plug No.    | M-04 |



Retainer No. (6918-1775) **M(6188-0556)** RS 03 MGY

|                        |      |
|------------------------|------|
| Ref: Terminal part No. | M-02 |
| Ref: Wire seal No.     | M-03 |
| Ref: Dummy plug No.    | M-04 |



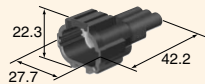
Retainer No. (6918-1775) **F(6185-0869)** RS 03 FGY

# 91 SEALED SERIES

090(2.3 mm) / STANDARD RS

3way

Ref: Terminal part No. M-02  
Ref: Wire seal No. M-03  
Ref: Dummy plug No. M-04



Retainer No. (6918-1775) **M(6188-0555)** RS 03 MB

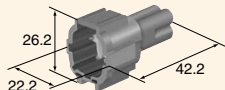
Ref: Terminal part No. M-02  
Ref: Wire seal No. M-03  
Ref: Dummy plug No. M-04



Retainer No. (6918-1775) **F(6185-0868)** RS 03 FB

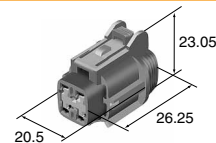
4way

Ref: Terminal part No. M-02  
Ref: Wire seal No. M-03  
Ref: Dummy plug No. M-04



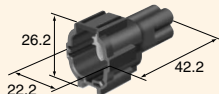
Retainer No. (6918-1776) **M(6188-0558)** RS 04 MGY

Ref: Terminal part No. M-02  
Ref: Wire seal No. M-03  
Ref: Dummy plug No. M-04



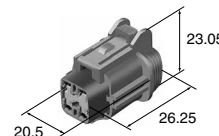
Retainer No. (6918-1776) **F(6185-1171)** RS 04 FGY-PR

Ref: Terminal part No. M-02  
Ref: Wire seal No. M-03  
Ref: Dummy plug No. M-04



Retainer No. (6918-1776) **M(6188-0557)** RS 04 MB

Ref: Terminal part No. M-02  
Ref: Wire seal No. M-03  
Ref: Dummy plug No. M-04

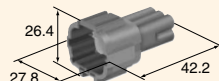


Retainer No. (6918-1776) **F(6185-1169)** RS 04 FB-PR

M-05

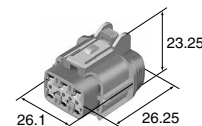
6way

Ref: Terminal part No. M-02  
Ref: Wire seal No. M-03  
Ref: Dummy plug No. M-04



Retainer No. (6918-1779) **M(6188-0560)** RS 06 MGY

Ref: Terminal part No. M-02  
Ref: Wire seal No. M-03  
Ref: Dummy plug No. M-04



Retainer No. (6918-1779) **F(6185-1175)** RS 06 FGY-PR

Ref: Terminal part No. M-02  
Ref: Wire seal No. M-03  
Ref: Dummy plug No. M-04



Retainer No. (6918-1779) **M(6188-0559)** RS 06 MB

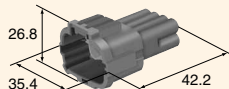
Ref: Terminal part No. M-02  
Ref: Wire seal No. M-03  
Ref: Dummy plug No. M-04



Retainer No. (6918-1779) **F(6185-1173)** RS 06 FB-PR

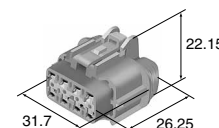
8way

Ref: Terminal part No. M-02  
Ref: Wire seal No. M-03  
Ref: Dummy plug No. M-04



Retainer No. (6918-1780) **M(6188-0738)** RS 08 MGY-PR

Ref: Terminal part No. M-02  
Ref: Wire seal No. M-03  
Ref: Dummy plug No. M-04



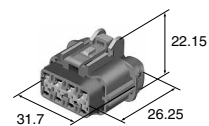
Retainer No. (6918-1780) **F(6185-1179)** RS 08 FGY-PR

Ref: Terminal part No. M-02  
Ref: Wire seal No. M-03  
Ref: Dummy plug No. M-04



Retainer No. (6918-1780) **M(6188-0736)** RS 08 MB-PR

Ref: Terminal part No. M-02  
Ref: Wire seal No. M-03  
Ref: Dummy plug No. M-04



Retainer No. (6918-1780) **F(6185-1177)** RS 08 FB-PR

\*Detail dimensions for mounting portion of the bracket are specified in the official drawing. Please contact our sales staff.

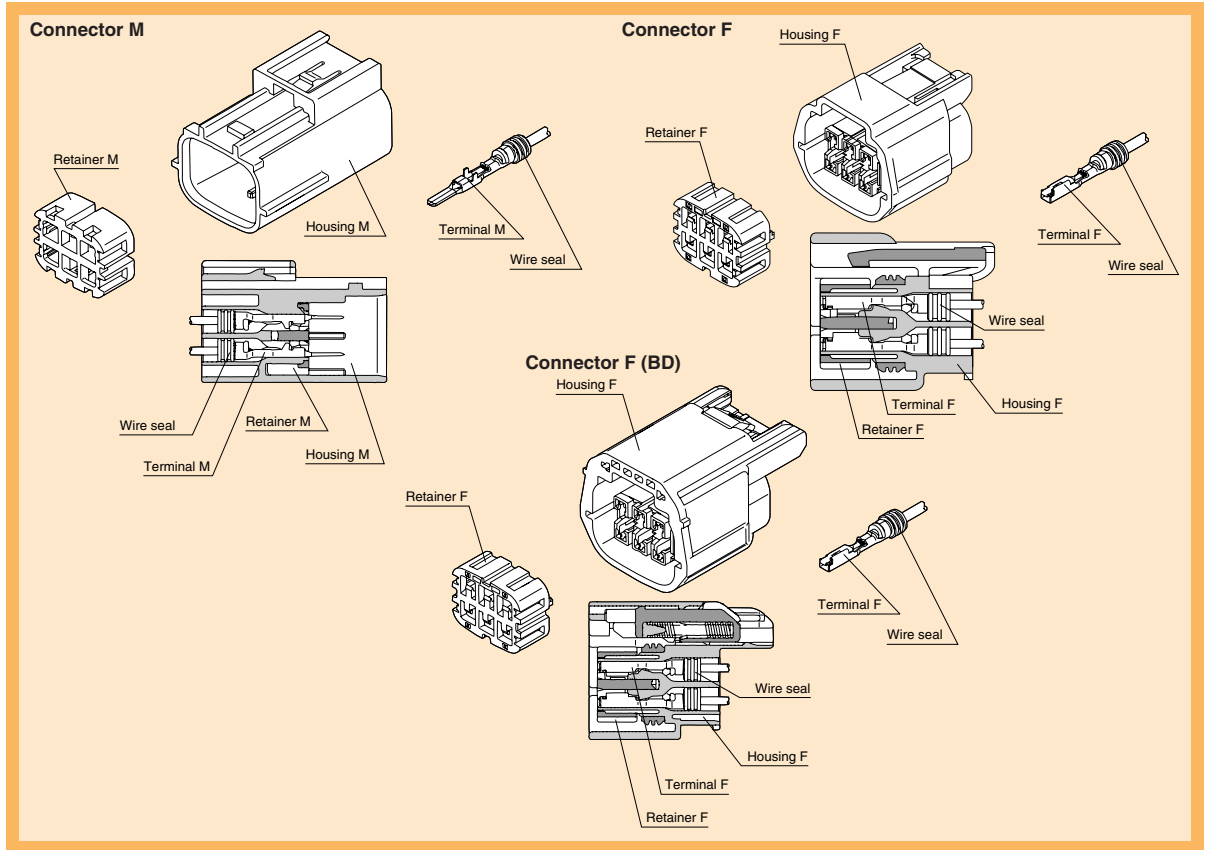
# 91 SEALED SERIES

090(2.3 mm) / STANDARD RS, RS-BD

090 terminal size sealed connector for connector seal F.

Inertia lock and spring go no-go systems (BD) are set up for connector F.

## Structure



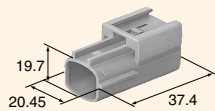
M-06

## Housing (UNIT: mm)

Material / P.B.T.

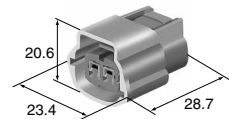
- Ref: Terminal part No. M-02
- Ref: Wire seal No. M-03
- Ref: Dummy plug No. M-04

2way



Retainer No. (6918-1653) **M(6181-0515)** RS 02 MSB  
**M(6181-0670)** RS 02 MSB-B

- Ref: Terminal part No. M-02
- Ref: Wire seal No. M-03
- Ref: Dummy plug No. M-04



Retainer No. (6918-1651) **F(6189-0951)** RS 02 FSB  
**F(6189-1107)** RS 02 FSB-B

- Ref: Terminal part No. M-02
- Ref: Wire seal No. M-03
- Ref: Dummy plug No. M-04



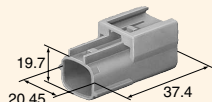
Retainer No. (6918-1651) **F(6189-0760)** RS 02 FSB-BD

# 91 SEALED SERIES

090(2.3 mm) / STANDARD RS, RS-BD

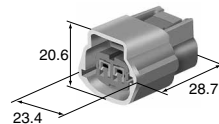
2way

Ref: Terminal part No. M-02  
 Ref: Wire seal No. M-03  
 Ref: Dummy plug No. M-04



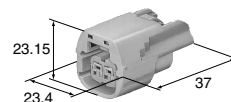
Retainer No. (6918-1653) **M(6181-0532)** RS 02 MLGY

Ref: Terminal part No. M-02  
 Ref: Wire seal No. M-03  
 Ref: Dummy plug No. M-04



Retainer No. (6918-1651) **F(6189-0950)** RS 02 FLGY

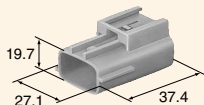
Ref: Terminal part No. M-02  
 Ref: Wire seal No. M-03  
 Ref: Dummy plug No. M-04



Retainer No. (6918-1651) **F(6189-0816)** RS 02 FLGY-BD

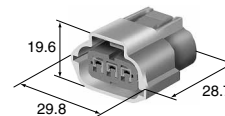
3way

Ref: Terminal part No. M-02  
 Ref: Wire seal No. M-03  
 Ref: Dummy plug No. M-04



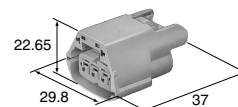
Retainer No. (6918-1654) **M(6181-0516)** RS 03 MSB  
**M(6181-0671)** RS 03 MSB-GY

Ref: Terminal part No. M-02  
 Ref: Wire seal No. M-03  
 Ref: Dummy plug No. M-04



Retainer No. (6918-1652) **F(6189-0928)** RS 03 FSB  
**F(6189-1104)** RS 03 FSB-GY

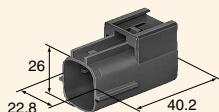
Ref: Terminal part No. M-02  
 Ref: Wire seal No. M-03  
 Ref: Dummy plug No. M-04



Retainer No. (6918-1652) **F(6189-0761)** RS 03 FSB-BD

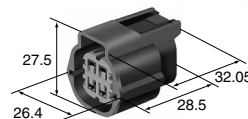
4way

Ref: Terminal part No. M-02  
 Ref: Wire seal No. M-03  
 Ref: Dummy plug No. M-04



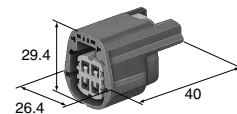
Retainer No. (6918-1598) **M(6181-0513)** RS 04 MG  
**M(6181-0668)** RS 04 MG-GY

Ref: Terminal part No. M-02  
 Ref: Wire seal No. M-03  
 Ref: Dummy plug No. M-04



Retainer No. (6918-1599) **F(6189-0929)** RS 04 FG  
**F(6189-1105)** RS 04 FG-GY

Ref: Terminal part No. M-02  
 Ref: Wire seal No. M-03  
 Ref: Dummy plug No. M-04



Retainer No. (6918-1599) **F(6189-0802)** RS 04 FG-BD

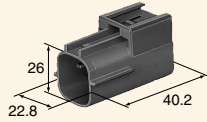
M-07

# 91 SEALED SERIES

090(2.3 mm) / STANDARD RS, RS-BD

4way

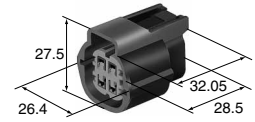
Ref: Terminal part No. M-02  
 Ref: Wire seal No. M-03  
 Ref: Dummy plug No. M-04



**M(6181-0514)** RS 04 ML  
**M(6181-0669)** RS 04 ML-B

Retainer No. (6918-1598)

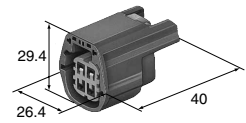
Ref: Terminal part No. M-02  
 Ref: Wire seal No. M-03  
 Ref: Dummy plug No. M-04



**F(6189-0930)** RS 04 FL  
**F(6189-1106)** RS 04 FL-B

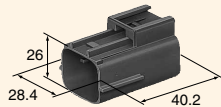
Retainer No. (6918-1599)

Ref: Terminal part No. M-02  
 Ref: Wire seal No. M-03  
 Ref: Dummy plug No. M-04



Retainer No. (6918-1599) **F(6189-0796)** RS 04 FL-BD

Ref: Terminal part No. M-02  
 Ref: Wire seal No. M-03  
 Ref: Dummy plug No. M-04



**M(6181-0511)** RS 06 MG  
**M(6181-0665)** RS 06 MG-DGY

Retainer No. (6918-1600)

Ref: Terminal part No. M-02  
 Ref: Wire seal No. M-03  
 Ref: Dummy plug No. M-04



**F(6189-0766)** RS 06 FG  
**F(6189-1102)** RS 06 FG-DGY

Retainer No. (6918-1601)

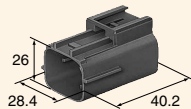
Ref: Terminal part No. M-02  
 Ref: Wire seal No. M-03  
 Ref: Dummy plug No. M-04



Retainer No. (6918-1601) **F(6189-0797)** RS 06 FG-BD

6way

Ref: Terminal part No. M-02  
 Ref: Wire seal No. M-03  
 Ref: Dummy plug No. M-04



**M(6181-0536)** RS 06 ML  
**M(6181-0664)** RS 06 ML-B

Retainer No. (6918-1600)

Ref: Terminal part No. M-02  
 Ref: Wire seal No. M-03  
 Ref: Dummy plug No. M-04



**F(6189-0847)** RS 06 FL  
**F(6189-1103)** RS 06 FL-B

Retainer No. (6918-1601)

Ref: Terminal part No. M-02  
 Ref: Wire seal No. M-03  
 Ref: Dummy plug No. M-04



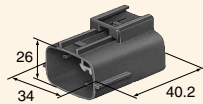
Retainer No. (6918-1601) **F(6189-0818)** RS 06 FL-BD



# 91 SEALED SERIES

090(2.3 mm) / STANDARD RS, RS-BD

Ref: Terminal part No. M-02  
 Ref: Wire seal No. M-03  
 Ref: Dummy plug No. M-04

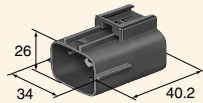


**M(6181-0512)** RS 08 MG  
**M(6181-0667)** RS 08 MG-GY

Retainer No. (6918-1602)

8way

Ref: Terminal part No. M-02  
 Ref: Wire seal No. M-03  
 Ref: Dummy plug No. M-04



**M(6181-0522)** RS 08 ML  
**M(6181-0666)** RS 08 ML-B

Retainer No. (6918-1602)

Ref: Terminal part No. M-02  
 Ref: Wire seal No. M-03  
 Ref: Dummy plug No. M-04



**F(6189-0954)** RS 08 FG  
**F(6189-1108)** RS 08 FG-GY

Retainer No. (6918-1603)

Ref: Terminal part No. M-02  
 Ref: Wire seal No. M-03  
 Ref: Dummy plug No. M-04



Retainer No. (6918-1603) **F(6189-0798)** RS 08 FG-BD

Ref: Terminal part No. M-02  
 Ref: Wire seal No. M-03  
 Ref: Dummy plug No. M-04



**F(6189-0955)** RS 08 FL  
**F(6189-1109)** RS 08 FL-B

Retainer No. (6918-1603)

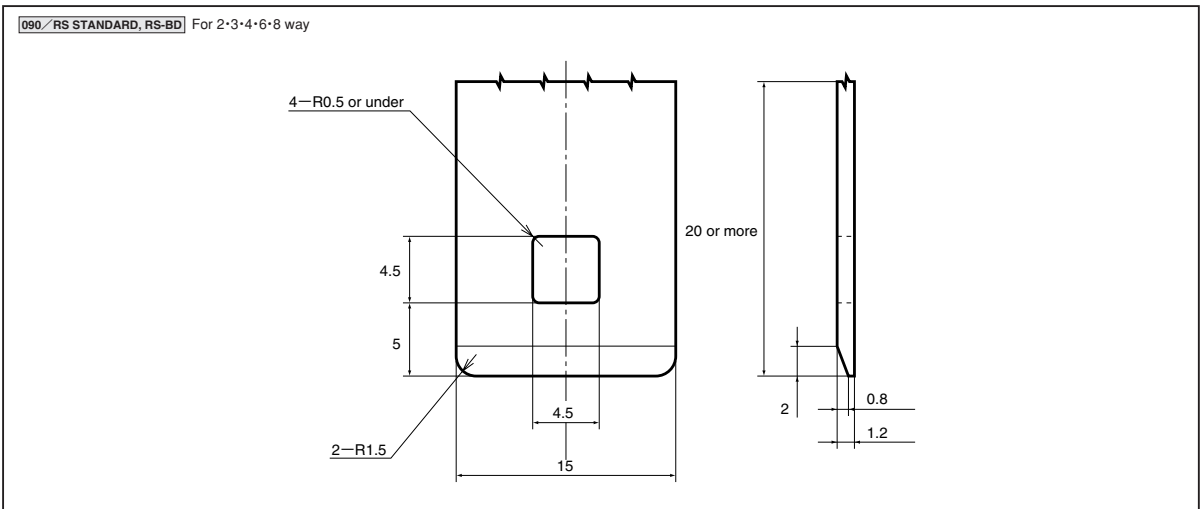
Ref: Terminal part No. M-02  
 Ref: Wire seal No. M-03  
 Ref: Dummy plug No. M-04



Retainer No. (6918-1603) **F(6189-0770)** RS 08 FL-BD

M-09

## ▶▶ Bracket for attaching (UNIT: mm) ◀◀



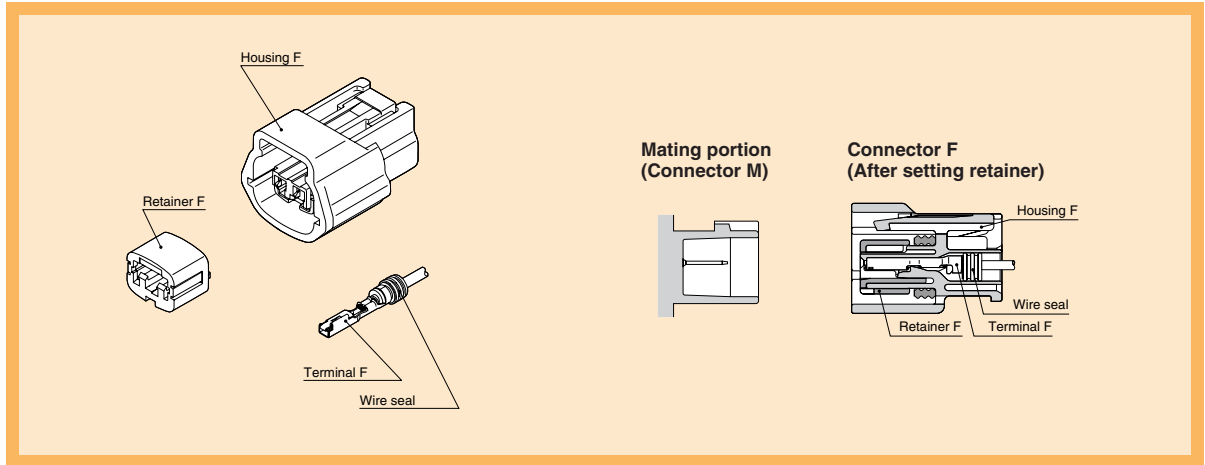
Note) The dimensions as shown here are reference dimensions and detail dimensions for mounting portion of the bracket are specified in the official drawing. Please contact our sales staff.

# 91 SEALED SERIES

090(2.3 mm) / E-RS

090 terminal size sealed connector for direct connection to mating devices.

## Structure



M-10

## Terminal

●Ref: 090 Terminal List (Page M-02)

## Wire seals

●Ref: 090 Wire seal List (Page M-03)

## Dummy plugs

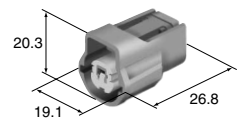
●Ref: 090 Dummy plug List (Page M-04)

## Housing (UNIT: mm)

Material / P.B.T.

1way

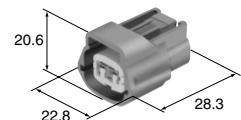
|                        |      |
|------------------------|------|
| Ref: Terminal part No. | M-02 |
| Ref: Wire seal No.     | M-03 |
| Ref: Dummy plug No.    | M-04 |



Retainer No. (6918-1636) **F(6098-2329)** E01FGY-RS

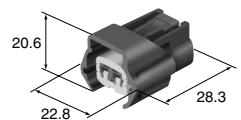
2way

|                        |      |
|------------------------|------|
| Ref: Terminal part No. | M-02 |
| Ref: Wire seal No.     | M-03 |
| Ref: Dummy plug No.    | M-04 |



Retainer No. (6918-1594) **F(6189-0772)** E02FGY-RS

|                        |      |
|------------------------|------|
| Ref: Terminal part No. | M-02 |
| Ref: Wire seal No.     | M-03 |
| Ref: Dummy plug No.    | M-04 |



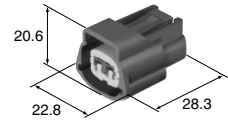
Retainer No. (6918-1594) **F(6189-0773)** E02FB-RS

# 91 SEALED SERIES

090(2.3 mm)/E-RS

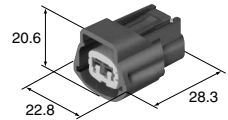
2way

Ref: Terminal part No. M-02  
 Ref: Wire seal No. M-03  
 Ref: Dummy plug No. M-04



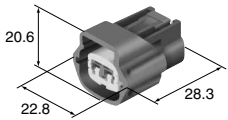
**F(6189-0774)** E 02 FBR-RS  
**F(6189-1093)** E 02 FBR-RS-GY  
 Retainer No. (6918-1594)

Ref: Terminal part No. M-02  
 Ref: Wire seal No. M-03  
 Ref: Dummy plug No. M-04



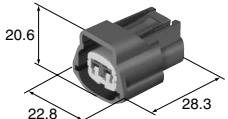
**F(6189-0775)** E 02 FG-RS  
**F(6189-1094)** E 02 FG-RS-LGY  
 Retainer No. (6918-1594)

Ref: Terminal part No. M-02  
 Ref: Wire seal No. M-03  
 Ref: Dummy plug No. M-04



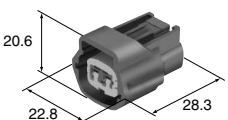
**F(6189-0776)** E 02 FR-RS  
**F(6189-1095)** E 02 FR-RS-GY  
 Retainer No. (6918-1594)

Ref: Terminal part No. M-02  
 Ref: Wire seal No. M-03  
 Ref: Dummy plug No. M-04



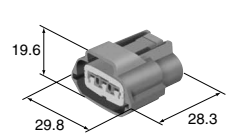
**F(6189-0777)** E 02 FL-RS  
**F(6189-1096)** E 02 FL-RS-LGY  
 Retainer No. (6918-1594)

Ref: Terminal part No. M-02  
 Ref: Wire seal No. M-03  
 Ref: Dummy plug No. M-04



**F(6189-0778)** E 02 FPU-RS  
**F(6189-1097)** E 02 FPU-RS-B  
 Retainer No. (6918-1594)

Ref: Terminal part No. M-02  
 Ref: Wire seal No. M-03  
 Ref: Dummy plug No. M-04



**F(6189-0779)** E 03 FGY-RS  
 Retainer No. (6918-1595)

Ref: Terminal part No. M-02  
 Ref: Wire seal No. M-03  
 Ref: Dummy plug No. M-04



**F(6189-0780)** E 03 FBR-RS  
**F(6189-1098)** E 03 FBR-RS-B  
 Retainer No. (6918-1595)

3way

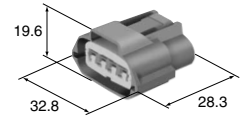
M-11

# 91 SEALED SERIES

090(2.3 mm) / E-RS

4way

Ref: Terminal part No. M-02  
 Ref: Wire seal No. M-03  
 Ref: Dummy plug No. M-04



Retainer No. (6918-1596) **F(6189-0781)** E 04 FGY-RS

Ref: Terminal part No. M-02  
 Ref: Wire seal No. M-03  
 Ref: Dummy plug No. M-04

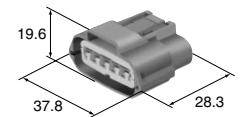


Retainer No. (6918-1596) **F(6189-0782)** E 04 FBR-RS  
**F(6189-1099)** E 04 FGY-RS-LGY

M-12

5way

Ref: Terminal part No. M-02  
 Ref: Wire seal No. M-03  
 Ref: Dummy plug No. M-04



Retainer No. (6918-1604) **F(6189-0848)** E 05 FGY-RS

Ref: Terminal part No. M-02  
 Ref: Wire seal No. M-03  
 Ref: Dummy plug No. M-04



Retainer No. (6918-1604) **F(6189-0783)** E 05 FBR-RS  
**F(6189-1100)** E 05 FBR-RS-B

6way

Ref: Terminal part No. M-02  
 Ref: Wire seal No. M-03  
 Ref: Dummy plug No. M-04



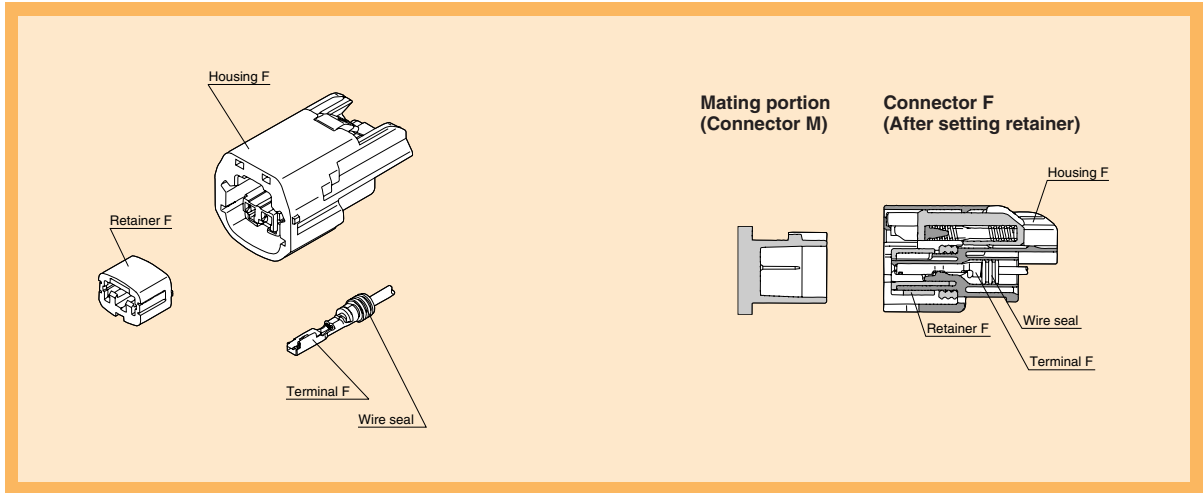
Retainer No. (6918-1597) **F(6189-0784)** E 06 FGY-RS

# 91 SEALED SERIES

090(2.3 mm)/E-BD

090 terminal size sealed connector with CPA(Connector position assurance) mechanism for direct connection to mating devices.

## Structure



M-13

## Terminal

●Ref: 090 Terminal List (Page M-02)

## Wire seals

●Ref: 090 Wire seal List (Page M-03)

## Dummy plugs

●Ref: 090 Dummy plug List (Page M-04)

## Housing (UNIT: mm)

Material/P.B.T.

2way

Ref: Terminal part No. M-02  
 Ref: Wire seal No. M-03  
 Ref: Dummy plug No. M-04



Retainer No. (6918-1594) **F(6189-0786)** E 02 FGY-BD

Ref: Terminal part No. M-02  
 Ref: Wire seal No. M-03  
 Ref: Dummy plug No. M-04



Retainer No. (6918-1594) **F(6189-0787)** E 02 FB-BD

# 91 SEALED SERIES

090(2.3 mm) / E-BD

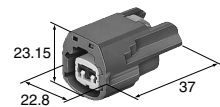
2way

Ref: Terminal part No. M-02  
Ref: Wire seal No. M-03  
Ref: Dummy plug No. M-04



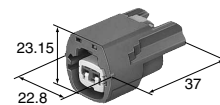
Retainer No. (6918-1594) **F(6189-0788)** E 02 FBR-BD

Ref: Terminal part No. M-02  
Ref: Wire seal No. M-03  
Ref: Dummy plug No. M-04



Retainer No. (6918-1594) **F(6189-0789)** E 02 FG-BD

Ref: Terminal part No. M-02  
Ref: Wire seal No. M-03  
Ref: Dummy plug No. M-04



Retainer No. (6918-1594) **F(6189-0790)** E 02 FR-BD

Ref: Terminal part No. M-02  
Ref: Wire seal No. M-03  
Ref: Dummy plug No. M-04



Retainer No. (6918-1594) **F(6189-0799)** E 02 FL-BD

Ref: Terminal part No. M-02  
Ref: Wire seal No. M-03  
Ref: Dummy plug No. M-04



Retainer No. (6918-1594) **F(6189-0800)** E 02 FPU-BD

Ref: Terminal part No. M-02  
Ref: Wire seal No. M-03  
Ref: Dummy plug No. M-04



Retainer No. (6918-1595) **F(6189-0791)** E 03 FGY-BD

Ref: Terminal part No. M-02  
Ref: Wire seal No. M-03  
Ref: Dummy plug No. M-04



Retainer No. (6918-1595) **F(6189-0792)** E 03 FBR-BD

3way

# 91 SEALED SERIES

090(2.3 mm) / E-BD

4way

Ref: Terminal part No. M-02  
Ref: Wire seal No. M-03  
Ref: Dummy plug No. M-04



Retainer No. (6918-1596) **F(6189-0793)** E 04 FGY-BD

Ref: Terminal part No. M-02  
Ref: Wire seal No. M-03  
Ref: Dummy plug No. M-04



Retainer No. (6918-1596) **F(6189-0794)** E 04 FBR-BD

5way

Ref: Terminal part No. M-02  
Ref: Wire seal No. M-03  
Ref: Dummy plug No. M-04



Retainer No. (6918-1604) **F(6189-0815)** E 05 FGY-BD

Ref: Terminal part No. M-02  
Ref: Wire seal No. M-03  
Ref: Dummy plug No. M-04



Retainer No. (6918-1604) **F(6189-0801)** E 05 FBR-BD

6way

Ref: Terminal part No. M-02  
Ref: Wire seal No. M-03  
Ref: Dummy plug No. M-04



Retainer No. (6918-1597) **F(6189-0795)** E 06 FGY-BD

M-15

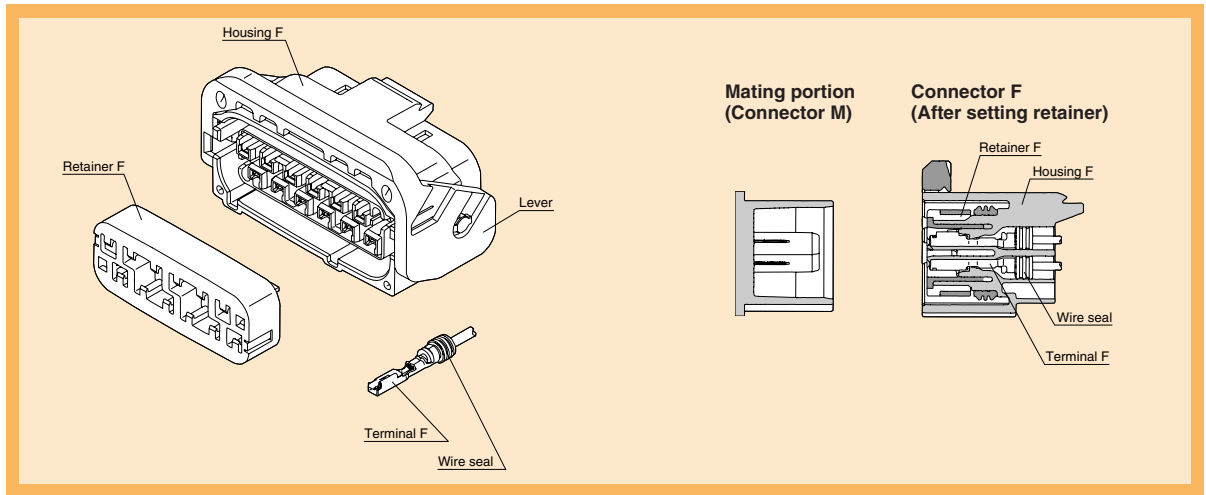
# 91 SEALED SERIES

090(2.3 mm)/RS FOR DIRECT CONNECTION TO MATING DEVICES

The sealed connectors for direct connection to mating devices have staggered terminal arrangement for improved assembly of mating devices.

The 12 way connector features a lever engagement mechanism to reduce the engagement force.

## Structure



M-16

## Terminal

●Ref: 090 Terminal List (Page M-02)

## Wire seals

●Ref: 090 Wire seal List (Page M-03)

## Dummy plugs

●Ref: 090 Dummy plug List (Page M-04)

## Housing (UNIT: mm)

Material/P.B.T.

8way

Ref: Terminal part No. M-02  
Ref: Wire seal No. M-03  
Ref: Dummy plug No. M-04



Retainer No. (6918-1607)

**F(6189-0727)**

RS 08 FGY-1V

12way

Ref: Terminal part No. M-02  
Ref: Wire seal No. M-03  
Ref: Dummy plug No. M-04



Retainer No. (6918-1605)

**F(6189-0725)**

RS 12 FGY