

DL SEALED SERIES

0-01

Features

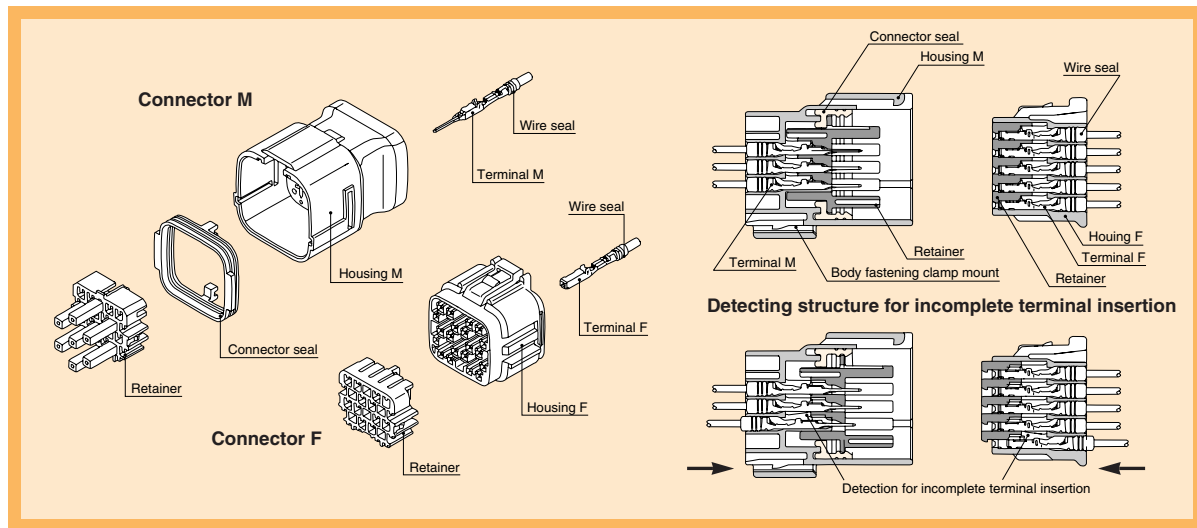
The DL sealed connector series has a mechanism that detects when terminals are not inserted completely.

This series consists of 040, 090, and 305 types (040, 090, and 187 types for the hybrid model) classified according to terminal size, covering an extensive array of applications from signal to power circuits.

- The connector mechanism only allows the retainer to be set when the terminal is completely inserted.
- These connectors can be directly secured to a bracket on the car body.
- In addition, an extra clip can be attached to the connector to secure it to the car body.

A compact sealed connector with TPA(Terminal position assurance) mechanism.

Structure



Terminal (UNIT: mm)

※For terminal selection, please contact our sales staff.

Cable size (mm ²)	0.3~0.5
Material	Brass
Surface treatment	Tin-plated
Reel (piece)	5000
Thickness (mm)	0.25

(Tab thickness : 0.64)

M(8100-2566)

Cable size (mm ²)	0.3~0.5
Material	Heat-resistant copper alloy
Surface treatment	Tin-plated
Reel (piece)	5000
Thickness (mm)	0.2

F(8100-1466)

Cable size (mm ²)	0.3~0.5
Material	Brass
Surface treatment	Gold-plated
Reel (piece)	5000
Thickness (mm)	0.25

(Tab thickness : 0.64)

M(8100-2616)

Cable size (mm ²)	0.3~0.5
Material	Heat-resistant copper alloy
Surface treatment	Gold-plated
Reel (piece)	5000
Thickness (mm)	0.2

F(8100-1501)

Cable size (mm ²)	0.75, 0.85~1.25
Material	Brass
Surface treatment	Tin-plated
Reel (piece)	5000
Thickness (mm)	0.25

(Tab thickness : 0.64)

M(8100-2567)

Cable size (mm ²)	0.75, 0.85~1.25
Material	Heat-resistant copper alloy
Surface treatment	Tin-plated
Reel (piece)	5000
Thickness (mm)	0.2

F(8100-1467)

Cable size (mm ²)	0.75, 0.85~1.25
Material	Brass
Surface treatment	Gold-plated
Reel (piece)	5000
Thickness (mm)	0.25

(Tab thickness : 0.64)

M(8100-2615)

Cable size (mm ²)	0.75, 0.85~1.25
Material	Heat-resistant copper alloy
Surface treatment	Gold-plated
Reel (piece)	5000
Thickness (mm)	0.2

F(8100-1502)

※Surface treatment of gold-plated is available to meet your needs.
Thick size is for the time being now.

DL SEALED SERIES

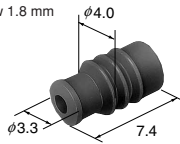
040(1.0 mm) / STANDARD

Wire seals (UNIT: mm)

- The wire seals are common to M and F.
- Please use silicon wire seal, when using AEX cable.

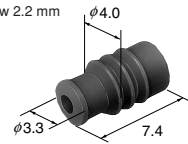
040

Cable overall diameter (mm)	Over than 1.4 mm below 1.8 mm
Material	Silicone
Color	Reddish Brown



S Type (7165-0547)

Cable overall diameter (mm)	Over than 1.8 mm below 2.2 mm
Material	Silicone
Color	Blue



M Type (7165-0548)

040

Cable overall diameter (mm)	Over than 1.3 mm below 2.2 mm
Material	Silicone
Color	Reddish Brown



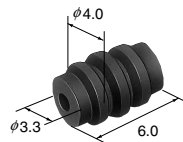
(7165-0386)

Dummy plugs (UNIT: mm)

- Dummy plugs are common to M and F.
- Dummy plugs are used to blind unused terminal holes.

040

Material	N.B.R.
Color	Black



(7165-0432)

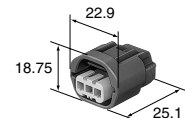
0-03

Housing (UNIT: mm)

Material / P.B.T.

3way

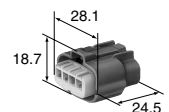
Ref: Terminal part No.	O-02
Ref: Wire seal No.	O-03
Ref: Dummy plug No.	O-03
Color	Gray



F(6189-0734)

4way

Ref: Terminal part No.	O-02
Ref: Wire seal No.	O-03
Ref: Dummy plug No.	O-03
Color	Dark Gray



F(6189-0551)

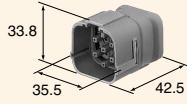
DL SEALED SERIES

040(1.0 mm) / STANDARD

20way

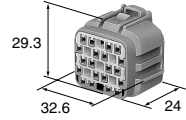
Ref: Terminal part No.	O-02
Ref: Wire seal No.	O-03
Ref: Dummy plug No.	O-03
Color	Gray
Note	O-18

Bracket Clamp : TYPE1



M(6188-0494)

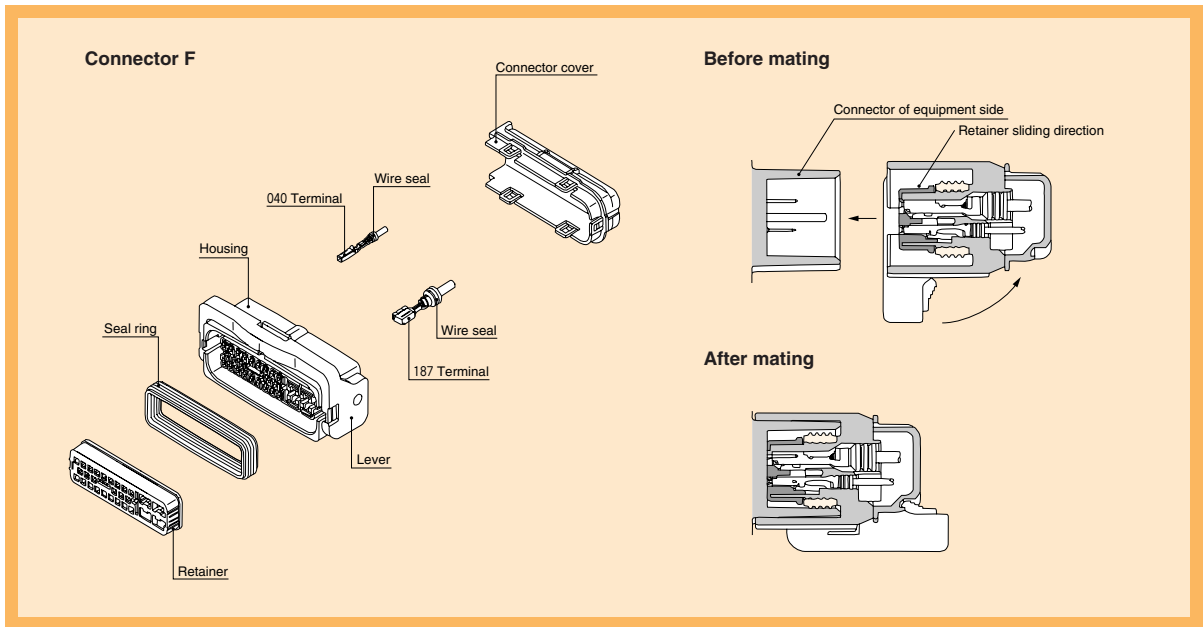
Ref: Terminal part No.	O-02
Ref: Wire seal No.	O-03
Ref: Dummy plug No.	O-03
Color	Gray



F(6189-0714)

0-04

Structure



Terminal

- Ref: 040 Terminal List (Page O-02), 187 Terminal List (Page O-14)

0-05

Wire seals

- Ref: 040 Wire seal List (Page O-03)
- Ref: 187 Wire seal List (Page B-18)
- The wire seals are common to M and F.

Dummy plugs

- Ref: 040 Dummy plug List (Page O-03), 187 Dummy Plug List (Page O-14)
- Dummy plugs are common to M and F

DL SEALED SERIES

040, 187(1.0 mm, 4.8 mm)/HYBRID

Housing (UNIT: mm)

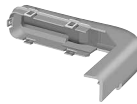
Material / P.B.T.

No. of way : () corresponds to 040, 187, in order from left to right.

20way
(16+4)

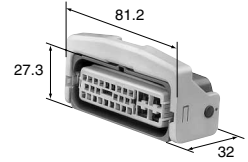


Left side Cover No. (6911-1927) Right side Cover No. (6911-0687)



Special shape Cover No. (6911-2396)

Ref: Terminal part No.	[040] O-02 [187] O-14
Ref: Wire seal No.	[040] O-03 [187] B-18
Ref: Dummy plug No.	[040] O-03 [187] O-14
Color	Black

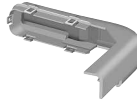


F(6189-6968)

28way
(24+4)

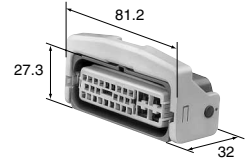


Left side Cover No. (6911-1927) Right side Cover No. (6911-0687)



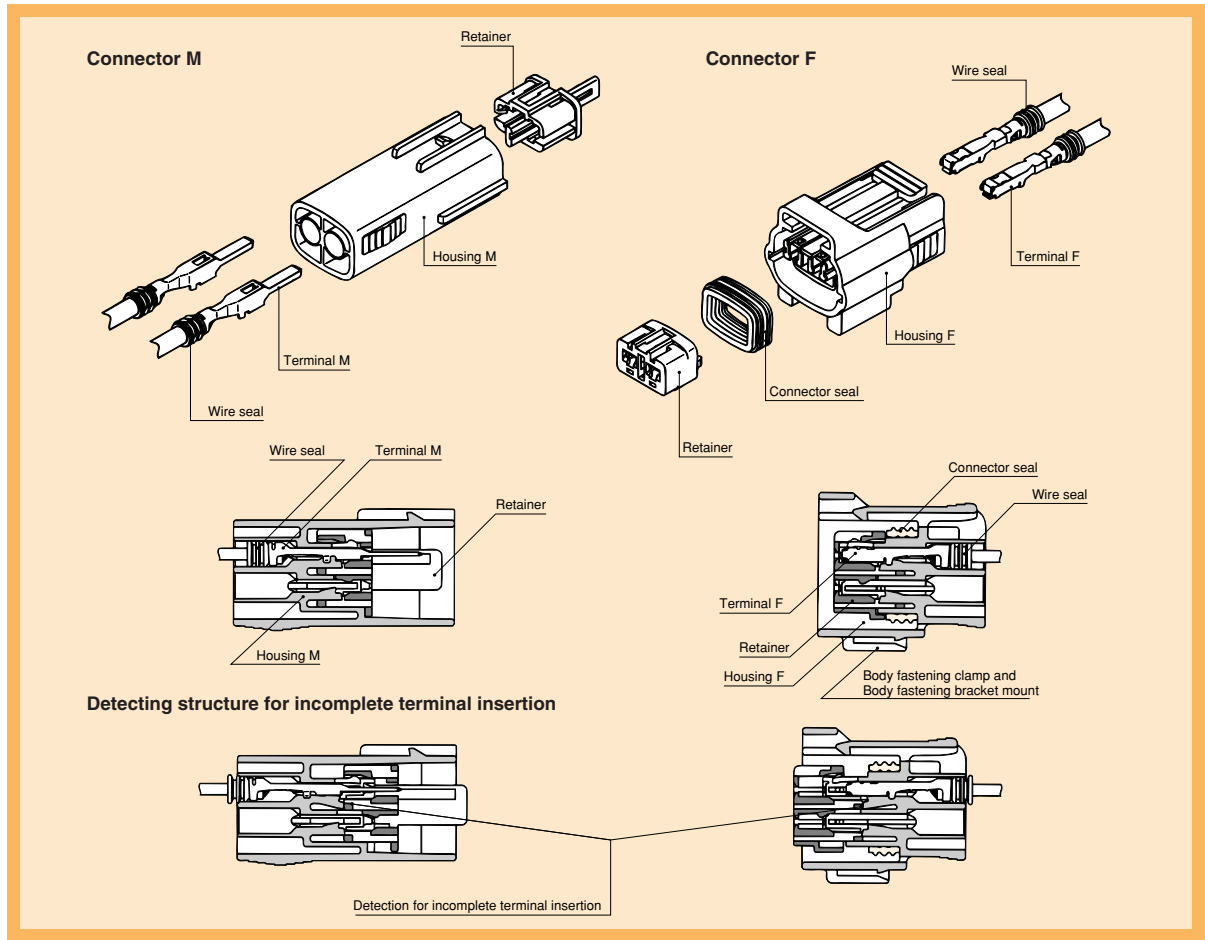
Special shape Cover No. (6911-2396)

Ref: Terminal part No.	[040] O-02 [187] O-14
Ref: Wire seal No.	[040] O-03 [187] B-18
Ref: Dummy plug No.	[040] O-03 [187] O-14
Color	Gray



F(6189-6967)

Structure



0-07

Terminal (UNIT: mm)

※ For terminal selection, please contact our sales staff.

Cable size (mm ²)	0.3~0.5
Material	Brass
Surface treatment	Tin-plated
Reel (piece)	4000
Thickness (mm)	0.3 (Tab thickness : 0.64)

M(8230-4472)

Cable size (mm ²)	0.3~0.5
Material	Heat-resistant copper alloy
Surface treatment	Tin-plated
Reel (piece)	4000
Thickness (mm)	0.25

F(8100-1427)

Cable size (mm ²)	0.3~0.5
Material	Brass
Surface treatment	Gold-plated
Reel (piece)	4000
Thickness (mm)	0.3 (Tab thickness : 0.64)

M(1500-0159)

Cable size (mm ²)	0.3~0.5
Material	Heat-resistant copper alloy
Surface treatment	Gold-plated
Reel (piece)	4000
Thickness (mm)	0.25

F(8100-1458)

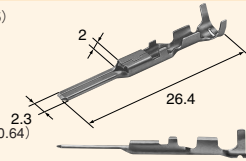
090
(S)

DL SEALED SERIES

090(2.3 mm) / STANDARD

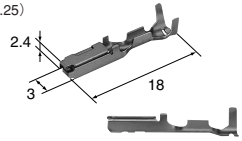
090
(M)

Cable size (mm ²)	0.75, 0.85~(1.25)
Material	Brass
Surface treatment	Tin-plated
Reel (piece)	3500
Thickness (mm)	0.3 (Tab thickness : 0.64)



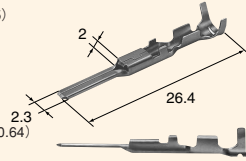
M(8230-4562)

Cable size (mm ²)	0.75, 0.85~(1.25)
Material	Heat-resistant copper alloy
Surface treatment	Tin-plated
Reel (piece)	3500
Thickness (mm)	0.25



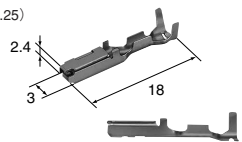
F(8100-1429)

Cable size (mm ²)	0.75, 0.85~(1.25)
Material	Brass
Surface treatment	Gold-plated
Reel (piece)	3500
Thickness (mm)	0.3 (Tab thickness : 0.64)



M(1500-0169)

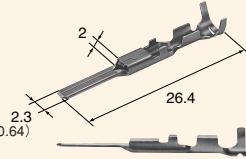
Cable size (mm ²)	0.75, 0.85~(1.25)
Material	Heat-resistant copper alloy
Surface treatment	Gold-plated
Reel (piece)	3500
Thickness (mm)	0.25



F(8100-1460)

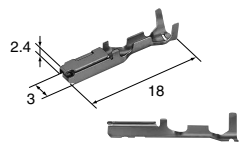
090
(L)

Cable size (mm ²)	1.25~2.0
Material	Brass
Surface treatment	Tin-plated
Reel (piece)	3500
Thickness (mm)	0.3 (Tab thickness : 0.64)



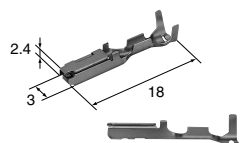
M(8230-4552)

Cable size (mm ²)	1.25~2.0
Material	Heat-resistant copper alloy
Surface treatment	Tin-plated
Reel (piece)	3500
Thickness (mm)	0.25



F(8100-1428)

Cable size (mm ²)	1.25~2.0
Material	Heat-resistant copper alloy
Surface treatment	Gold-plated
Reel (piece)	3500
Thickness (mm)	0.25



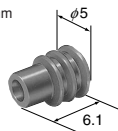
F(8100-1459)

0-08

Wire seals (UNIT: mm)

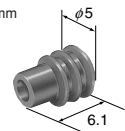
● The wire seals are common to M and F.

Cable overall diameter (mm)	Over than 1.1 mm below 1.5 mm
Material	N.B.R.
Color	Red



SS Type (7165-0210)

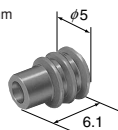
Cable overall diameter (mm)	Over than 1.5 mm below 2.0 mm
Material	N.B.R.
Color	Blue



S Type (7165-0118)

090

Cable overall diameter (mm)	Over than 2.0 mm below 2.9 mm
Material	N.B.R.
Color	Brown



M Type (7165-0119)

DL SEALED SERIES

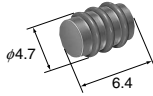
090(2.3 mm) / STANDARD

Dummy plugs (UNIT: mm)

- Dummy plugs are common to M and F terminal.
- Dummy plugs are used to blind unused terminal holes.

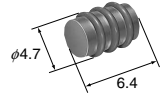
090

Material	N.B.R.
Color	Brown



(7161-9787)

Material	Silicone
Color	Green



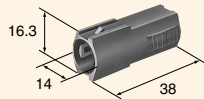
(7165-0193)

Housing (UNIT: mm)

Material / P.B.T. or Low water absorption Nylon

1way

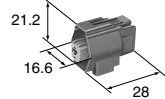
Ref: Terminal part No.	O-07
Ref: Wire seal No.	O-08
Ref: Dummy plug No.	O-09
Color	Dark Gray



M(6195-0240)

Ref: Terminal part No.	O-07
Ref: Wire seal No.	O-08
Ref: Dummy plug No.	O-09
Color	Dark Gray
Note	O-18

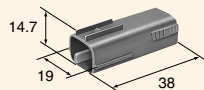
Bracket Clamp : TYPE2



F(6195-0066)

2way

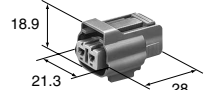
Ref: Terminal part No.	O-07
Ref: Wire seal No.	O-08
Ref: Dummy plug No.	O-09
Color	Dark Gray



M(6195-0006)

Ref: Terminal part No.	O-07
Ref: Wire seal No.	O-08
Ref: Dummy plug No.	O-09
Color	Dark Gray
Note	O-18

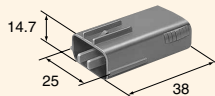
Bracket Clamp : TYPE2



F(6195-0003)

3way

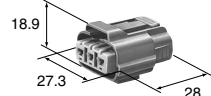
Ref: Terminal part No.	O-07
Ref: Wire seal No.	O-08
Ref: Dummy plug No.	O-09
Color	Dark Gray



M(6195-0012)

Ref: Terminal part No.	O-07
Ref: Wire seal No.	O-08
Ref: Dummy plug No.	O-09
Color	Dark Gray
Note	O-18

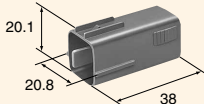
Bracket Clamp : TYPE2



F(6195-0009)

4way

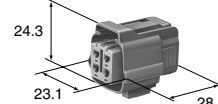
Ref: Terminal part No.	O-07
Ref: Wire seal No.	O-08
Ref: Dummy plug No.	O-09
Color	Dark Gray



M(6195-0018)

Ref: Terminal part No.	O-07
Ref: Wire seal No.	O-08
Ref: Dummy plug No.	O-09
Color	Dark Gray
Note	O-18

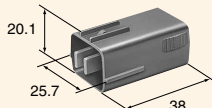
Bracket Clamp : TYPE2



F(6195-0015)

6way

Ref: Terminal part No.	O-07
Ref: Wire seal No.	O-08
Ref: Dummy plug No.	O-09
Color	Dark Gray



M(6195-0024)

Ref: Terminal part No.	O-07
Ref: Wire seal No.	O-08
Ref: Dummy plug No.	O-09
Color	Dark Gray
Note	O-18

Bracket Clamp : TYPE2



F(6195-0021)

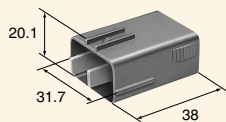
O-09

DL SEALED SERIES

090(2.3 mm) / STANDARD

8way

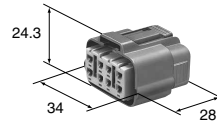
Ref: Terminal part No.	O-07
Ref: Wire seal No.	O-08
Ref: Dummy plug No.	O-09
Color	Dark Gray



M(6195-0054)

Ref: Terminal part No.	O-07
Ref: Wire seal No.	O-08
Ref: Dummy plug No.	O-09
Color	Dark Gray
Note	O-18

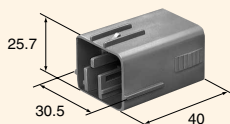
Bracket Clamp : TYPE2



F(6195-0051)

10way

Ref: Terminal part No.	O-07
Ref: Wire seal No.	O-08
Ref: Dummy plug No.	O-09
Color	Light Gray



M(6195-0167)

Ref: Terminal part No.	O-07
Ref: Wire seal No.	O-08
Ref: Dummy plug No.	O-09
Color	Light Gray
Note	O-18

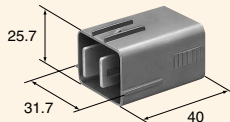
Bracket Clamp : TYPE2



F(6195-0164)

12way

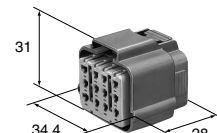
Ref: Terminal part No.	O-07
Ref: Wire seal No.	O-08
Ref: Dummy plug No.	O-09
Color	Dark Gray



M(6195-0152)

Ref: Terminal part No.	O-07
Ref: Wire seal No.	O-08
Ref: Dummy plug No.	O-09
Color	Dark Gray
Note	O-18

Bracket Clamp : TYPE2



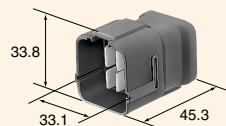
F(6195-0149)

0-10

16way

Ref: Terminal part No.	O-07
Ref: Wire seal No.	O-08
Ref: Dummy plug No.	O-09
Color	Dark Gray
Note	O-18

Bracket Clamp : TYPE1



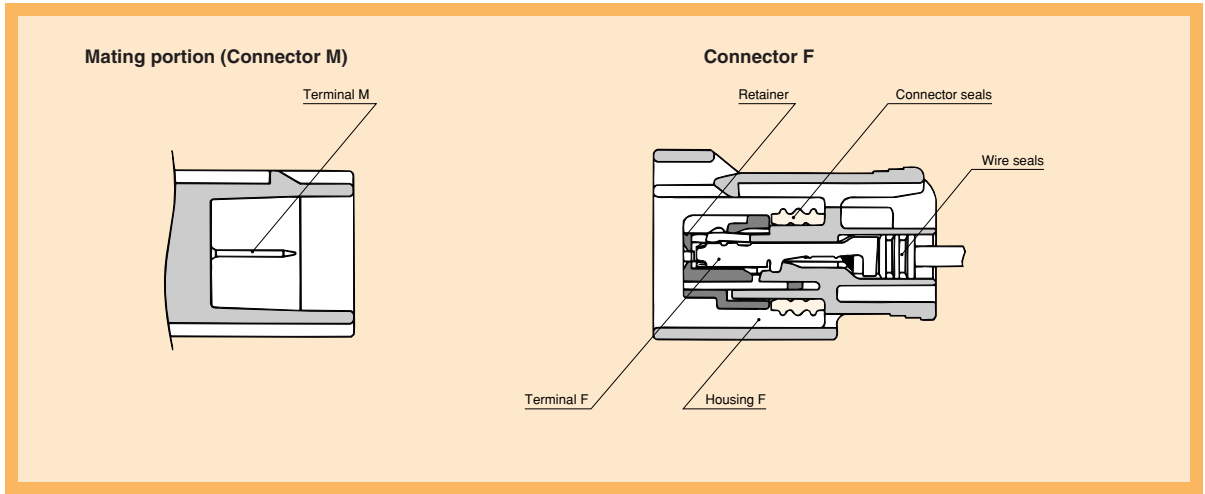
M(6188-0495)

Ref: Terminal part No.	O-07
Ref: Wire seal No.	O-08
Ref: Dummy plug No.	O-09
Color	Dark Gray



F(6189-0715)

Structure

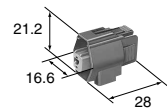


Housing (UNIT: mm)

Material / P.B.T.

1way

Ref: Terminal part No.	O-07
Ref: Wire seal No.	O-08
Ref: Dummy plug No.	O-09
Color	Dark Gray



F(6195-0066)

0-11

2way
(Special shape)

Ref: Terminal part No.	O-07
Ref: Wire seal No.	O-08
Ref: Dummy plug No.	O-09
Color	Dark Gray



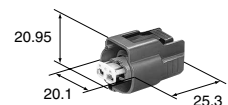
F(6195-0041)

Ref: Terminal part No.	O-07
Ref: Wire seal No.	O-08
Ref: Dummy plug No.	O-09
Color	Dark Gray



F(6195-0043)

Ref: Terminal part No.	O-07
Ref: Wire seal No.	O-08
Ref: Dummy plug No.	O-09
Color	Black



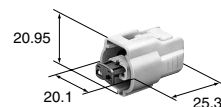
F(6195-0062)

DL SEALED SERIES

090(2.3 mm)/DIRECT CONNECTION TO MATING DEVICES

2way
(Special shape)

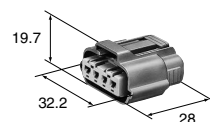
Ref: Terminal part No.	O-07
Ref: Wire seal No.	O-08
Ref: Dummy plug No.	O-09
Color	Natural



F(6195-0064)

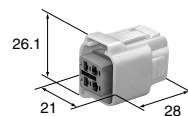
4way

Ref: Terminal part No.	O-07
Ref: Wire seal No.	O-08
Ref: Dummy plug No.	O-09
Color	Dark Gray



F(6195-0030)

Ref: Terminal part No.	O-07
Ref: Wire seal No.	O-08
Ref: Dummy plug No.	O-09
Color	Natural

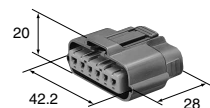


F(6195-0032)

0-12

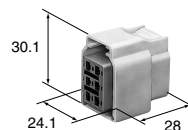
6way

Ref: Terminal part No.	O-07
Ref: Wire seal No.	O-08
Ref: Dummy plug No.	O-09
Color	Dark Gray



F(6195-0035)

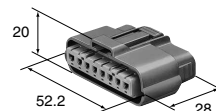
Ref: Terminal part No.	O-07
Ref: Wire seal No.	O-08
Ref: Dummy plug No.	O-09
Color	Natural



F(6195-0157)

8way

Ref: Terminal part No.	O-07
Ref: Wire seal No.	O-08
Ref: Dummy plug No.	O-09
Color	Dark Gray



F(6195-0038)

DL SEALED SERIES

090(2.3 mm) / HEAT-RESISTANT

These connectors are used closest to the engine where the ambient temperature is the highest.
Also special copper alloy terminals with high heat resistance last a long life.

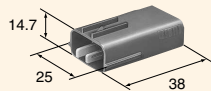
Housing (UNIT: mm)

Material / Low water absorption Nylon

※For terminal selection, please contact our sales staff.

3way

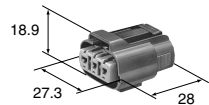
Ref: Terminal part No.	O-07
Ref: Wire seal No.	O-08
Ref: Dummy plug No.	O-09
Color	Dark Brown



M(6195-0243)

Ref: Terminal part No.	O-07
Ref: Wire seal No.	O-08
Ref: Dummy plug No.	O-09
Color	Dark Brown
Note	O-18

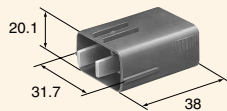
Bracket Clamp : TYPE2



F(6195-0247)

8way

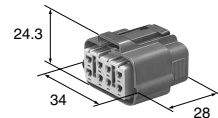
Ref: Terminal part No.	O-07
Ref: Wire seal No.	O-08
Ref: Dummy plug No.	O-09
Color	Dark Brown



M(6195-0245)

Ref: Terminal part No.	O-07
Ref: Wire seal No.	O-08
Ref: Dummy plug No.	O-09
Color	Dark Brown
Note	O-18

Bracket Clamp : TYPE2



F(6195-0249)

DL SEALED SERIES

090, 187(2.3 mm, 4.8 mm)/HYBRID

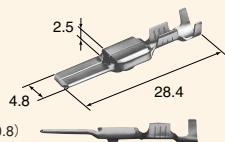
Terminal (UNIT: mm)

●Ref: 090 Terminal List (Page O-07)

※For terminal selection, please contact our sales staff.

187
(S)

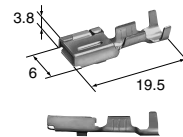
Cable size (mm ²)	0.3~0.5
Material	Brass
Surface treatment	Tin-plated
Reel (piece)	3000
Thickness (mm)	0.4



M(8100-0463)

(Tab thickness : 0.8)

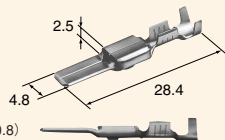
Cable size (mm ²)	0.3~0.5
Material	Heat-resistant copper alloy
Surface treatment	Tin-plated
Reel (piece)	2500
Thickness (mm)	0.4



F(8100-0661)

187
(M)

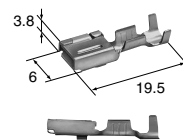
Cable size (mm ²)	0.5~1.25
Material	Brass
Surface treatment	Tin-plated
Reel (piece)	3000
Thickness (mm)	0.4



M(8100-0464)

(Tab thickness : 0.8)

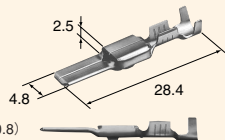
Cable size (mm ²)	0.5~1.25
Material	Heat-resistant copper alloy
Surface treatment	Tin-plated
Reel (piece)	2500
Thickness (mm)	0.4



F(8100-0660)

187
(L)

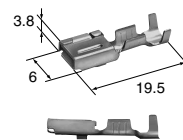
Cable size (mm ²)	2.0~3.0
Material	Brass
Surface treatment	Tin-plated
Reel (piece)	2500
Thickness (mm)	0.4



M(8100-0465)

(Tab thickness : 0.8)

Cable size (mm ²)	2.0~3.0
Material	Heat-resistant copper alloy
Surface treatment	Tin-plated
Reel (piece)	2000
Thickness (mm)	0.4



F(8100-0468)

0-14

Wire seals

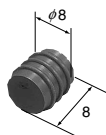
- The wire seals are common to M and F.
- Please use silicone wire seal, when using AEX cable.
- Ref: 090 Wire seal List (Page O-08)
- Ref: 187 Wire seal List (Page B-18)

Dummy plugs (UNIT: mm)

- Dummy plugs are common to M and F terminal.
- Dummy plugs are used to blind unused terminal holes.
- Ref: 090 Dummy plug List (page O-09)

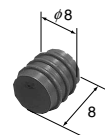
187

Material	N.B.R.
Color	Dark Gray



(7165-0145)

Material	Silicone
Color	Green



(7165-0195)

DL SEALED SERIES

090, 187(2.3 mm, 4.8 mm)/HYBRID

Housing (UNIT: mm)

Material/P.B.T.

No. of way: () corresponds to 090, 187, in order from left to right.

※For terminal selection, please contact our sales staff.

4way
(2+2)

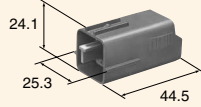
Ref: Terminal part No. [090] O-07
[187] O-14

Ref: Wire seal No. [090] O-08
[187] B-18

Ref: Dummy plug No. [090] O-09
[187] O-14

Color Dark Gray

M(6195-0072)



Ref: Terminal part No. [090] O-07 [187] O-14

Ref: Wire seal No. [090] O-08 [187] B-18

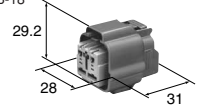
Ref: Dummy plug No. [090] O-09
[187] O-14

Color Dark Gray

Note O-18

Bracket Clamp : TYPE2

F(6195-0069)



4way
(2+2)
(Special shape)

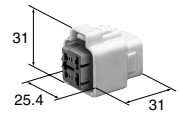
Ref: Terminal part No. [090] O-07
[187] O-14

Ref: Wire seal No. [090] O-08
[187] B-18

Ref: Dummy plug No. [090] O-09
[187] O-14

Color Natural

F(6195-0074)



9way
(7+2)

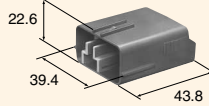
Ref: Terminal part No. [090] O-07
[187] O-14

Ref: Wire seal No. [090] O-08
[187] B-18

Ref: Dummy plug No. [090] O-09
[187] O-14

Color Dark Gray

M(6195-0173)



Ref: Terminal part No. [090] O-07 [187] O-14

Ref: Wire seal No. [090] O-08 [187] B-18

Ref: Dummy plug No. [090] O-09
[187] O-14

Color Dark Gray

Note O-18

Bracket Clamp : TYPE2

F(6195-0170)



9way
(7+2)
(Special shape)

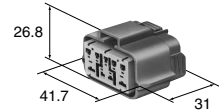
Ref: Terminal part No. [090] O-07
[187] O-14

Ref: Wire seal No. [090] O-08
[187] B-18

Ref: Dummy plug No. [090] O-09
[187] O-14

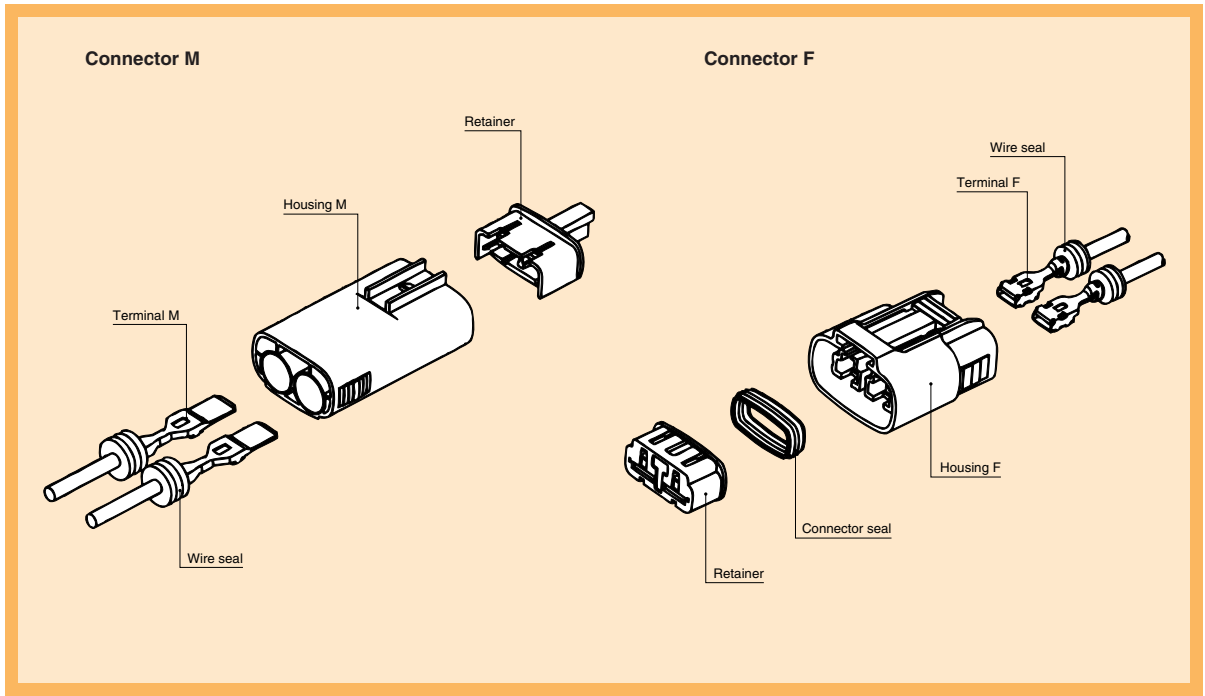
Color Black

F(6195-0238)



0-15

Structure



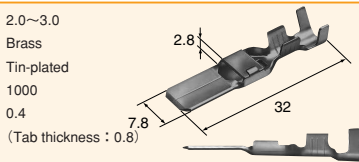
0-16

Terminal (UNIT: mm)

※For terminal selection, please contact our sales staff.

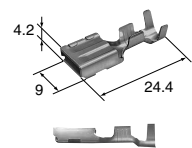
305
(M)

Cable size (mm ²)	2.0~3.0
Material	Brass
Surface treatment	Tin-plated
Reel (piece)	1000
Thickness (mm)	0.4



M(8100-0499)

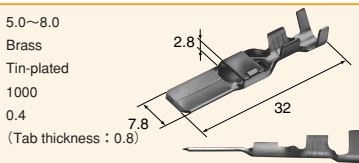
Cable size (mm ²)	2.0~3.0
Material	Heat-resistant copper alloy
Surface treatment	Tin-plated
Reel (piece)	1000
Thickness (mm)	0.4



F(8100-0498)

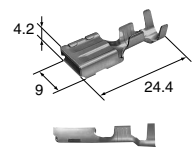
305
(L)

Cable size (mm ²)	5.0~8.0
Material	Brass
Surface treatment	Tin-plated
Reel (piece)	1000
Thickness (mm)	0.4



M(8100-0798)

Cable size (mm ²)	5.0~8.0
Material	Heat-resistant copper alloy
Surface treatment	Tin-plated
Reel (piece)	1000
Thickness (mm)	0.4



F(8100-0797)

DL SEALED SERIES

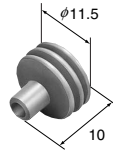
305(7.8 mm) / STANDARD

Wire seals (UNIT: mm)

●The wire seals are common to M and F.

305

Cable overall diameter (mm)	2.9~3.8
Material	N.B.R
Color	Gray



M Type (7165-0132)

Cable overall diameter (mm)	4.4~5.8
Material	N.B.R
Color	Black



L Type (7165-0133)

Dummy plugs (UNIT: mm)

- Dummy plugs are common to M and F terminal.
- Dummy plugs are used to blind unused terminal holes.

305

Material	N.B.R.
Color	Black



(7165-0180)

Housing (UNIT: mm)

Material / P.B.T.
Color / Dark Gray

1way

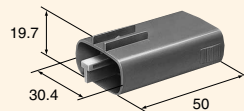
Ref: Terminal part No.	O-16
Ref: Wire seal No.	O-17
Ref: Dummy plug No.	O-17



F(6195-0155)

2way

Ref: Terminal part No.	O-16
Ref: Wire seal No.	O-17
Ref: Dummy plug No.	O-17



M(6195-0057)

Ref: Terminal part No.	O-16
Ref: Wire seal No.	O-17
Ref: Dummy plug No.	O-17
Note	O-18

Bracket Clamp : TYPE2



F(6195-0060)

O-17



▶▶ Body fastening clamp (UNIT: mm) ◀◀

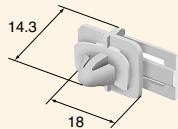
040 standard type, 090 standard type, heat resistant type, hybrid type and 305 standard type connectors, the clamp can be installed.

※The detail dimensions for the mounting portion are specified in drawing

Material / P.B.T.

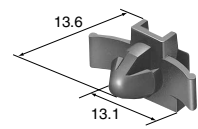
Note) Before using the product, please contact our sales staff.

Color	Natural
Thickness (mm)	t=0.6~1.6
hole size	φ7.0



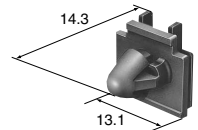
TYPE 1 (6810-2653)

Color	Dark Gray
Thickness (mm)	t=0.6~2.0
hole size	7.2×10.2



Note) TYPE 2 (6810-0805) (CLIP LA0167C11)

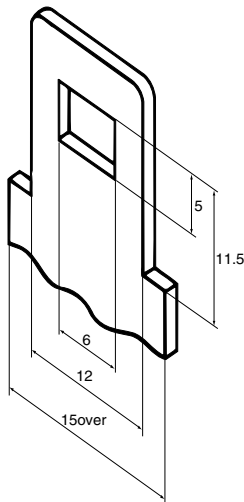
Color	Brown
Thickness (mm)	t=0.7~2.0
hole size	7.2×10.2



TYPE 2 (6810-1584) (CLIP 71-102-BR)

▶▶ Bracket for attaching (UNIT: mm) ◀◀

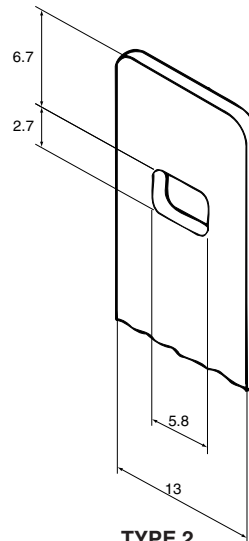
040 / STANDARD	For 20way
090 / STANDARD	For 16way



TYPE 1

t = 1.2mm

090 / STANDARD	For 1·2·3·4·6·8·12way
090 / HEAT RESISTANT	For 3·8way
090, 189 / HYBRID	For 4(2+2)way 9(7+2)way
305 / STANDARD	For 1·2way



TYPE 2

t = 1.2mm

Bracket for fixing the body 040 standard type, 090 standard type, heat resistant type, hybrid type and 305 standard type connectors can be installed directly on the bracket on the body as necessary.

Note) Bracket plate thickness : t=1.2mm

The dimensions as shown here are reference dimensions and detail dimensions for mounting portion of the bracket are specified in the official drawing.

Insert the bracket directly into the mount for the body fastening clamp which is provided on the connector.