

794993-1 ✓ ACTIVE

MATE-N-LOK | Universal MATE-N-LOK

TE Internal #: 794993-1

Rectangular Connector Seals, Interface Seal, Wire-to-Wire, -55 – 105 °C [-67 – 221 °F], Universal MATE-N-LOK

[View on TE.com >](#)



Connectors > Rectangular Connectors > Rectangular Connector Accessories > Rectangular Connector Seals



Connector Seal Type: **Interface Seal**

Connector System: **Wire-to-Wire**

Operating Temperature Range: **-55 – 105 °C [-67 – 221 °F]**

## Features

### Product Type Features

Accessory Color	Black
Product Type	Accessory
Wire/Cable Type	Discrete Wire
Connector Seal Type	Interface Seal
Connector System	Wire-to-Wire

### Body Features

Material	Silicone Foam
----------	---------------

### Usage Conditions

Operating Temperature Range	-55 – 105 °C[-67 – 221 °F]
-----------------------------	----------------------------

### Operation/Application

For Use With	Universal MATE-N-LOK Sealed Connectors
--------------	----------------------------------------

### Packaging Features

Packaging Method	Package
Packaging Quantity	1000

## Product Compliance

[For compliance documentation, visit the product page on TE.com>](#)

EU RoHS Directive 2011/65/EU	Compliant
EU ELV Directive 2000/53/EC	Out of Scope
China RoHS 2 Directive MIIT Order No 32, 2016	No Restricted Materials Above Threshold
EU REACH Regulation (EC) No. 1907/2006	Current ECHA Candidate List: JUNE 2022 (224) Candidate List Declared Against: JUL 2021 (219) SVHC > Threshold: Not Yet Reviewed
Halogen Content	Low Halogen - Br, Cl, F, I < 900 ppm per homogenous material. Also BFR/CFR/PVC Free
Solder Process Capability	Not applicable for solder process capability

#### Product Compliance Disclaimer

This information is provided based on reasonable inquiry of our suppliers and represents our current actual knowledge based on the information they provided. This information is subject to change. The part numbers that TE has identified as EU RoHS compliant have a maximum concentration of 0.1% by weight in homogenous materials for lead, hexavalent chromium, mercury, PBB, PBDE, DBP, BBP, DEHP, DIBP, and 0.01% for cadmium, or qualify for an exemption to these limits as defined in the Annexes of Directive 2011/65/EU (RoHS2). Finished electrical and electronic equipment products will be CE marked as required by Directive 2011/65/EU. Components may not be CE marked. Additionally, the part numbers that TE has identified as EU ELV compliant have a maximum concentration of 0.1% by weight in homogenous materials for lead, hexavalent chromium, and mercury, and 0.01% for cadmium, or qualify for an exemption to these limits as defined in the Annexes of Directive 2000/53/EC (ELV). Regarding the REACH Regulation, the information TE provides on SVHC in articles for this part number is based on the latest European Chemicals Agency (ECHA) 'Guidance on requirements for substances in articles' posted at this URL: <https://echa.europa.eu/guidance-documents/guidance-on-reach>

## Compatible Parts

 <p>TE Part # 640583-3 06P UMNL HDR ASSY R/A 94VO LF</p>	 <p>TE Part # 926307-3 6P UN-MNL AUFN-GEH</p>	 <p>TE Part # 643234-1 06P UMNL HDR ASSY R/A 94VO</p>	 <p>TE Part # 640585-1 06P UMNL PLUG HSG V2 NATL</p>
-------------------------------------------------------------------------------------------------------------------------------------------------	--------------------------------------------------------------------------------------------------------------------------------------	------------------------------------------------------------------------------------------------------------------------------------------------	-----------------------------------------------------------------------------------------------------------------------------------------------




TE Part # 926307-1  
6P UNIV.M-N-L.CAP



TE Part # 640583-1  
06P UMNL HDR ASSY R/A 94VO



TE Part # 641831-1  
06P UMNL PIN HDR ASSY 94VO



TE Part # 770262-3  
06P UMNL SOK HDR ASSY 94VO LF



TE Part # 643407-1  
06P UMNL PIN HDR ASSY POL NATL



TE Part # 640581-1  
06P UMNL PLUG HSG



TE Part # 643408-1  
06P UMNL PIN HDR ASSY POL 94VO



TE Part # 640587-1  
06P UMNL HDR ASSY R/A V2



TE Part # 794785-1  
04P UMNL INTERFACE SEAL



TE Part # 641832-1  
06P UMNL PIN HDR ASSY V2 NATL



TE Part # 3-643234-0  
06P UMNL HDR ASSY R/A 94VO LF



TE Part # 1-640415-0  
UMNL KEYING PLUG V0




TE Part # 2029383-1  
06P UMNL-II FRONT2RR FOAM SPCR




TE Part # 2029442-1  
06P UMNL-II TPA FOAM SPACER


Also in the Series | **Universal MATE-N-LOK**



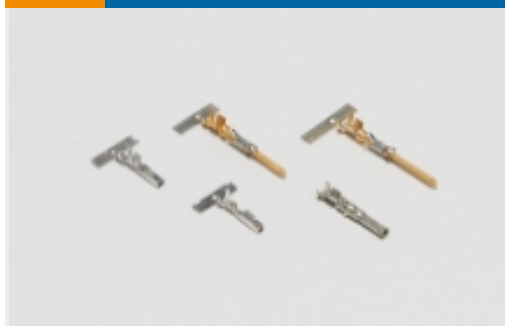
Circular Power Connectors(2)



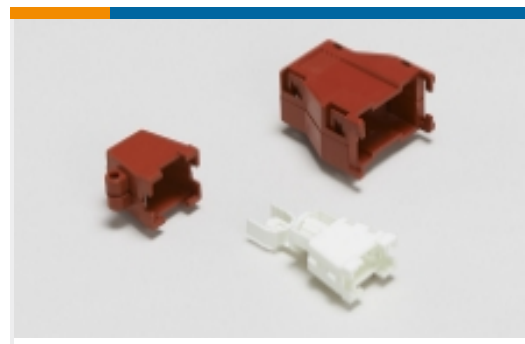
Connector Contacts(11)



Insertion & Extraction Tools(4)



Power Contacts(207)



Rectangular Boots & Strain Relief(35)



Rectangular Connector Adapters(7)



Rectangular Connector Hardware(1)



Rectangular Connector Housings(2)



Rectangular Connector Keying Plugs(3)



Rectangular Connector Locking(4)



Rectangular Connector Seals(26)



Rectangular Power Connectors(729)

### Customers Also Bought



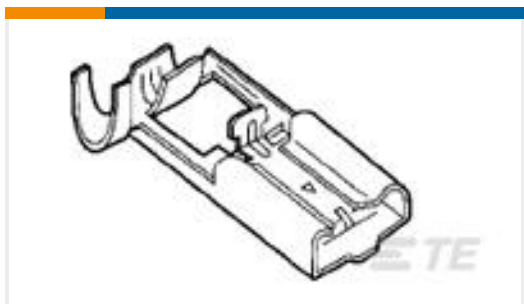
TE Part #1-1971906-6  
 HEADER ASSY 12POS,KEYING-A,  
 NEW GIC3.3



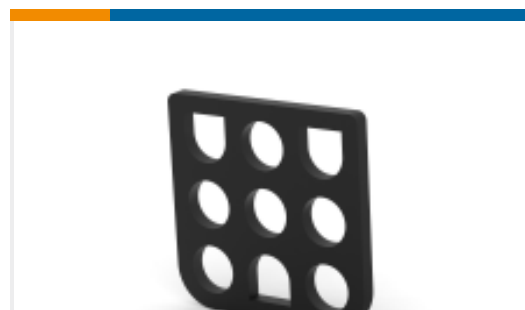
TE Part #794096-1  
 06P UMNL PLUG



TE Part #770336-1  
 04P .093 COMM P&S PLUG .250CL



TE Part #900318-1  
 PL 312 FLAG REC 20-18AWG 0.32X24.  
 9 PTPBR



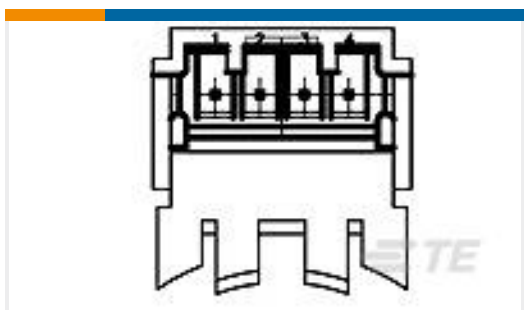
TE Part #794994-1  
 09P UMNL BLACK INTERFACE SEAL



TE Part #1-1971906-4  
 HEADER ASSY 8POS,KEYING-A,NEW  
 GIC3.3



TE Part #1376478-5  
 2.5MM SIGNAL MATE CONN HEADER



TE Part #1473585-1  
 I/O THROUGH CONNECTOR ASS'Y  
 4P



TE Part #1977104-2  
 STV04=4 POS SIP SWITCH

### Documents



**Product Drawings**

**06P UMNL BLACK INTERFACE SEAL**

English

---

**CAD Files**

**3D PDF**

3D

**Customer View Model**

[ENG\\_CVM\\_CVM\\_794993-1\\_C.2d\\_dxf.zip](#)

English

**Customer View Model**

[ENG\\_CVM\\_CVM\\_794993-1\\_C.3d\\_igs.zip](#)

English

**Customer View Model**

[ENG\\_CVM\\_CVM\\_794993-1\\_C.3d\\_stp.zip](#)

English

**Customer View Model**

[ENG\\_CVM\\_794993-1\\_E.3d\\_igs.zip](#)

English

**Customer View Model**

[ENG\\_CVM\\_794993-1\\_E.3d\\_stp.zip](#)

English

**Customer View Model**

[ENG\\_CVM\\_794993-1\\_E.2d\\_dxf.zip](#)

English

**3D PDF**

3D

By downloading the CAD file I accept and agree to the [Terms and Conditions](#) of use.

---

**Datasheets & Catalog Pages**

**SOFT\_SHELL\_PIN\_AND\_SOCKET\_CONNECTORS\_CATALOG**

English

---

**Product Environmental Compliance**

[MD\\_794993-1\\_04192018210\\_dmtec](#)

English

[MD\\_794993-1\\_04192018210\\_dmtec](#)

English