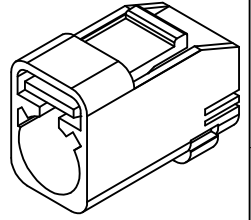


MATERIALS AND FINISHES

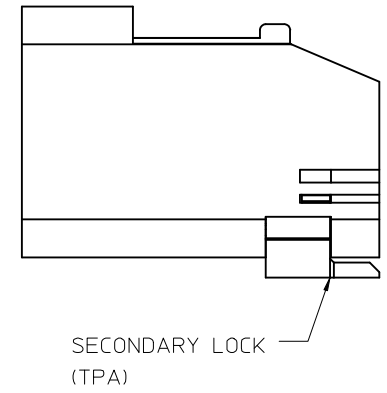
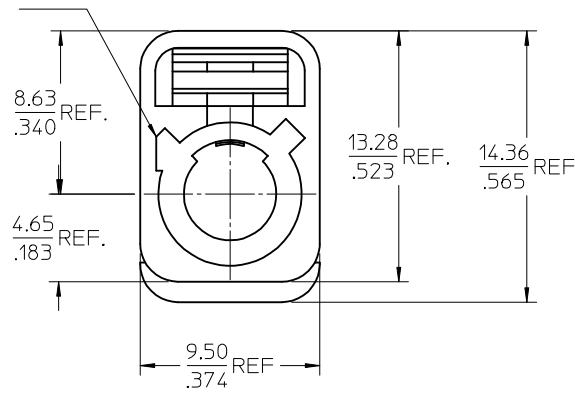
OUTER CASING: NYLON 66 OR EQUIVALENT  
 KEYING: SEE TABLE  
 COLOR: SEE TABLE



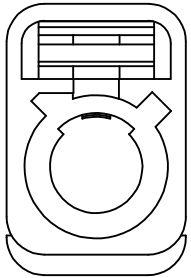
NOTES:

- 250 PCS (89618-37XX) PER ZIPLOCK BAG.  
 NOTICE: THE BAG MUST BE COMPLETELY SEALED.
- STORAGE CONDITIONS:  
 TEMPERATURE -10° TO 40°C HUMIDITY <75%

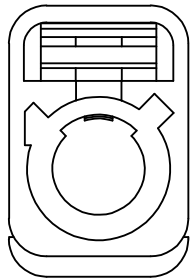
FAKRA  
 CONNECTOR  
 KEYING  
 CODE B SHOWN



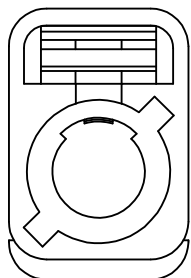
ADDED NOTES PER RF15-E102 EC NO: URF2015-0316 DRWNLIN 2015/01/26 CHKD: APPR: YCHENG 2015/02/03	QUALITY SYMBOLS	GENERAL TOLERANCES (UNLESS SPECIFIED)	DIMENSION STYLE	SCALE	DESIGN UNITS	THIRD ANGLE PROJECTION
	▽=0	mm INCH	MM/IN	5:1	METRIC	
	▽=0	4 PLACES ± --- ± ---	DRAWN BY DATE	TITLE SUB ASSY SHROUD WITH SECONDARY LOCKING		
	▽=0	3 PLACES ± --- ± ---	EL IN 2013/11/07			
	▽=0	2 PLACES ± --- ± ---	CHECKED BY DATE	DOCUMENT NO. SD-89618-373 SHEET NO. 1 OF 2		
	1 PLACE ± --- ± ---	JUDY 2013/11/07				
	0 PLACE ± --- ± ---	APPROVED BY DATE	MATERIAL NO. SEE SHEET 2			
		MHUANG 2014/04/16				
		ANGULAR ± 2 °	THIS DRAWING CONTAINS INFORMATION THAT IS PROPRIETARY TO MOLEX INCORPORATED AND SHOULD NOT BE USED WITHOUT WRITTEN PERMISSION			
		DRAFT WHERE APPLICABLE MUST REMAIN WITHIN DIMENSIONS				



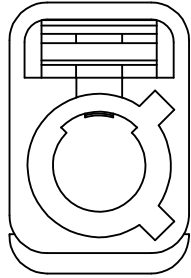
CODE A



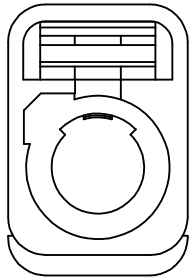
CODE B



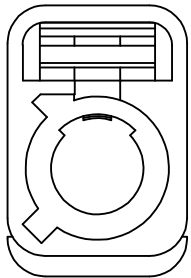
CODE C



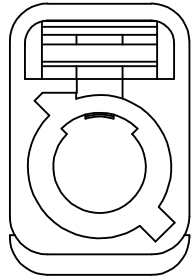
CODE D



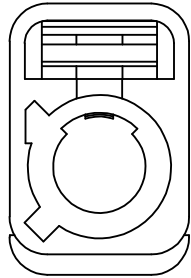
CODE E



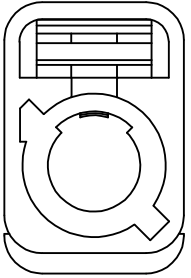
CODE F



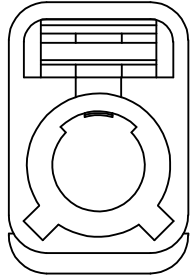
CODE G



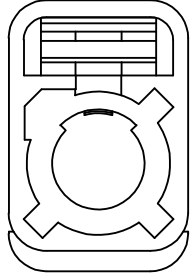
CODE H



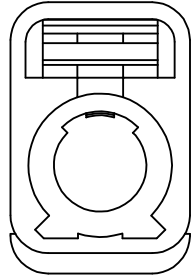
CODE I



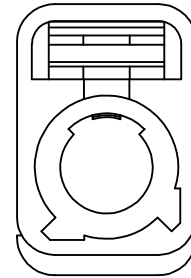
CODE K



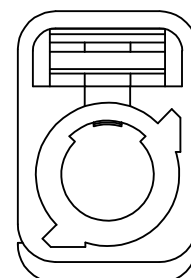
CODE Z



CODE L



CODE M



CODE N

N	PASTEL GREEN	89618-3743
M	PASTEL ORANGE	89618-3742
L	CARMINE RED	89618-3741
Z	WATER BLUE	89618-3740
K	CURRY YELLOW	89618-3739
I	BEIGE	89618-3738
H	VIOLET	89618-3737
G	GRAY	89618-3736
F	BROWN	89618-3735
E	GREEN	89618-3734
D	BORDEAUXVIOLET	89618-3733
C	BLUE	89618-3732
B	CREAM WHITE	89618-3731
A	BLACK	89618-3730
KEYING CODE	COLOR	PART NO.

SEE SHEET 1  
 EC NO: URF2015-0316  
 DRWNLIN 2015/01/26  
 CHKD:  
 APPR: YCHENG 2015/02/03

REV	DESCRIPTION
A1	

QUALITY SYMBOLS	GENERAL TOLERANCES (UNLESS SPECIFIED)
	mm INCH
	4 PLACES ± --- ± ---
	3 PLACES ± --- ± ---
	2 PLACES ± --- ± ---
	1 PLACE ± --- ± ---
	0 PLACE ± --- ± ---
	ANGULAR ± 2°
	DRAFT WHERE APPLICABLE MUST REMAIN WITHIN DIMENSIONS

DIMENSION STYLE	
MM/IN	
DRAWN BY	DATE
EL IN	2013/11/07
CHECKED BY	DATE
JUDY	2013/11/07
APPROVED BY	DATE
MHUANG	2014/04/16
MATERIAL NO.	
SEE TABLE	

SCALE	DESIGN UNITS	THIRD ANGLE PROJECTION
5:1	METRIC	
TITLE		
SUB ASSY SHROUD WITH SECONDARY LOCKING		
molex		
DOCUMENT NO.	SHEET NO.	
SD-89618-373	2 OF 2	
THIS DRAWING CONTAINS INFORMATION THAT IS PROPRIETARY TO MOLEX INCORPORATED AND SHOULD NOT BE USED WITHOUT WRITTEN PERMISSION		

MATERIALS AND FINISHES

BODY: BRASS  
PLATED: NICKEL

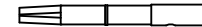
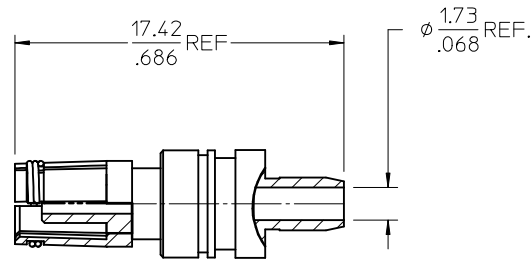
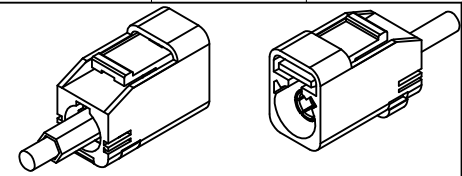
CENTER CONTACT: PHOSPOR BRONZE  
PLATED: GOLD

CRIMP TUBE: BRASS  
PLATED: NICKEL

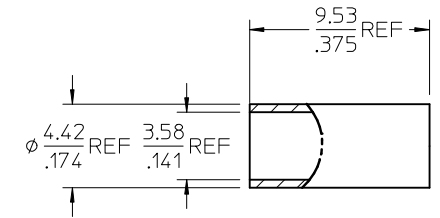
OUTER CASING: NYLON 66 OR EQUIVALENT  
KEYING: SEE TABLE  
COLOR: SEE TABLE

INSULATOR: PP

PACKAGING BY POLYBAG M00 1K

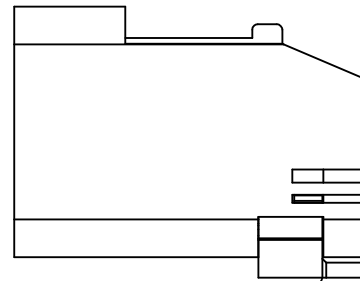
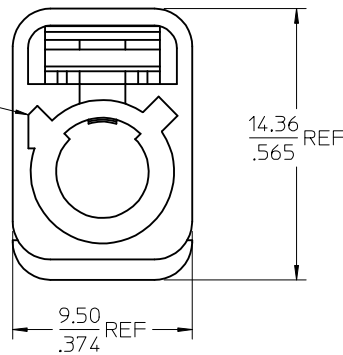


CENTER CONTACT  
PART NO.: 89538-0781

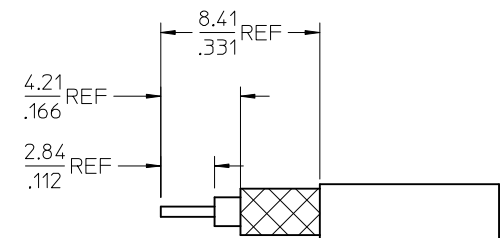


CRIMP TUBE  
PART NO.: 89684-9012

FAKRA  
CONNECTOR  
KEYING  
CODE B SHOWN



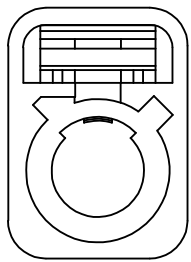
SECONDARY LOCK  
(TPA)



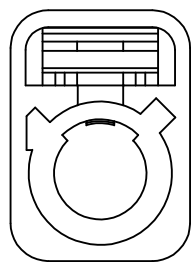
PART # SEE SHEET 2

AS-73597-045	ASSYMBLY INSTRUCTIONS
PS-89675-331	PRODUCT SPECIFICATION
DIN 72594-1	INTERFACE SPECIFICATION
SPECIFICATION	DESCRIPTION

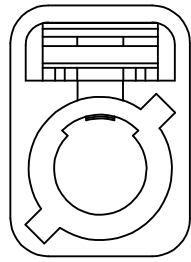
CHG NEW RELEASE PDR: 2017/05/23 ECN: 017-0393 DRAWN: YCHENG 2017/05/19 CHKD: APPR: YCHENG 2017/05/24	DESCRIPTION REV	QUALITY SYMBOLS	GENERAL TOLERANCES (UNLESS SPECIFIED)	DIMENSION STYLE	SCALE	DESIGN UNITS	THIRD ANGLE PROJECTION	
		$\nabla = 0$ $\nabla = 0$ $\nabla = 0$	mm    INCH 4 PLACES ± --- ± --- 3 PLACES ± --- ± --- 2 PLACES ± --- ± --- 1 PLACE ± --- ± --- 0 PLACE ± --- ± ---	MM/IN	5:1	METRIC	TITLE SMB PLUG FAKRA II STR. FOR RD316 500HM	
			ANGULAR ± 2°	DRAWN BY	DATE	mox SD-73403-781		
			DRAFT WHERE APPLICABLE MUST REMAIN WITHIN DIMENSIONS	CHECKED BY	DATE	DOCUMENT NO. SD-73403-781		
				APPROVED BY	DATE	SHEET NO. 1 OF 3		
				THIS DRAWING CONTAINS INFORMATION THAT IS PROPRIETARY TO MOLEX INCORPORATED AND SHOULD NOT BE USED WITHOUT WRITTEN PERMISSION				



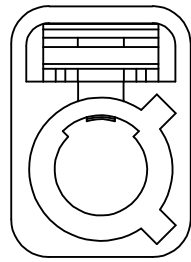
CODE A



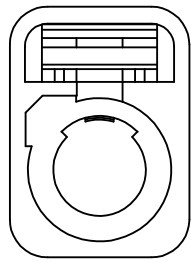
CODE B



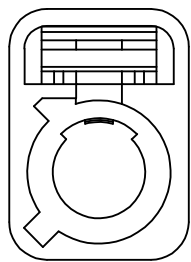
CODE C



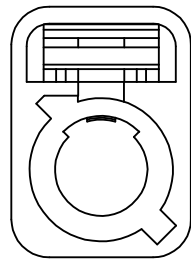
CODE D



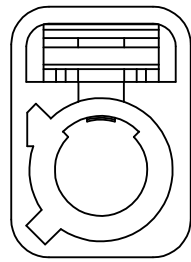
CODE E



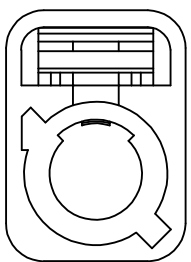
CODE F



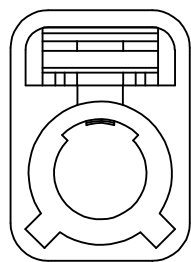
CODE G



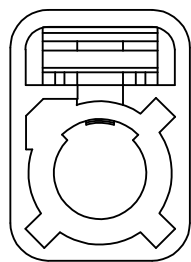
CODE H



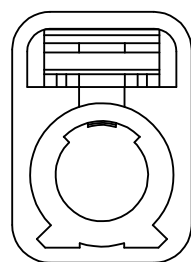
CODE I



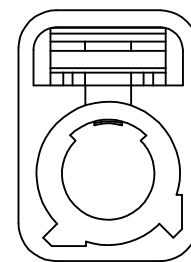
CODE K



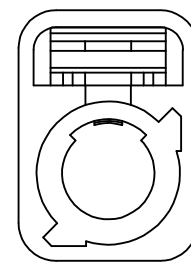
CODE Z



CODE L



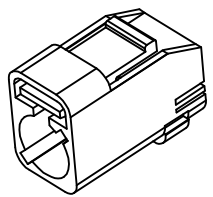
CODE M



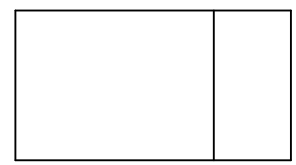
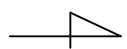
CODE N

N	PASTEL GREEN	73403-7823
M	PASTEL ORANGE	73403-7822
L	CARMINE RED	73403-7821
Z	WATER BLUE	73403-7820
K	CURRY YELLOW	73403-7819
I	BEIGE	73403-7818
H	VIOLET	73403-7817
G	GRAY	73403-7816
F	BROWN	73403-7815
E	GREEN	73403-7814
D	BORDEAUXVIOLET	73403-7813
C	BLUE	73403-7812
B	CREAM WHITE	73403-7811
A	BLACK	73403-7810
KEYING CODE	COLOR	PART NO.

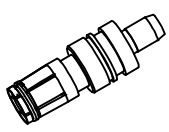
SEE SHEET 1 EC NO: URF2017-0393 DRAWN: YCHENG 2017/05/19 CHKD: APPR: YCHENG 2017/05/24 REV:	QUALITY SYMBOLS ▽=0 ▽=0 ▽=0	GENERAL TOLERANCES (UNLESS SPECIFIED) <table border="1"> <tr> <td></td> <td>mm</td> <td>INCH</td> </tr> <tr> <td>4 PLACES</td> <td>± ---</td> <td>± ---</td> </tr> <tr> <td>3 PLACES</td> <td>± ---</td> <td>± ---</td> </tr> <tr> <td>2 PLACES</td> <td>± ---</td> <td>± ---</td> </tr> <tr> <td>1 PLACE</td> <td>± ---</td> <td>± ---</td> </tr> <tr> <td>0 PLACE</td> <td>± ---</td> <td>± ---</td> </tr> </table>		mm	INCH	4 PLACES	± ---	± ---	3 PLACES	± ---	± ---	2 PLACES	± ---	± ---	1 PLACE	± ---	± ---	0 PLACE	± ---	± ---	DIMENSION STYLE MM/IN DRAWN BY: YCHENG DATE: 2017/05/16 CHECKED BY: DATE: APPROVED BY: YCHENG DATE: 2017/05/24	SCALE: 5:1 DESIGN UNITS: METRIC THIRD ANGLE PROJECTION	TITLE: SMB PLUG FAKRA II STR. FOR RD316 500HM DOCUMENT NO. SD-73403-781 SHEET NO. 2 OF 3
		mm	INCH																				
	4 PLACES	± ---	± ---																				
	3 PLACES	± ---	± ---																				
2 PLACES	± ---	± ---																					
1 PLACE	± ---	± ---																					
0 PLACE	± ---	± ---																					
ANGULAR ± 2° DRAFT WHERE APPLICABLE MUST REMAIN WITHIN DIMENSIONS		MATERIAL NO. SEE TABLE	THIS DRAWING CONTAINS INFORMATION THAT IS PROPRIETARY TO MOLEX INCORPORATED AND SHOULD NOT BE USED WITHOUT WRITTEN PERMISSION																				



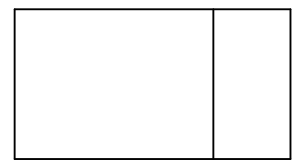
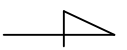
P/N:89618-373X



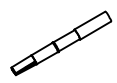
250 PCS SET PER BAG



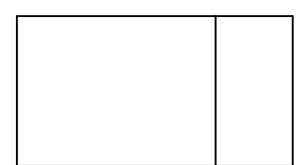
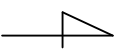
P/N:89618-350X



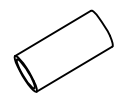
250 PCS SET PER BAG



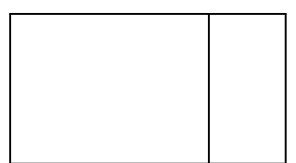
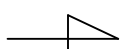
P/N:89538-0781



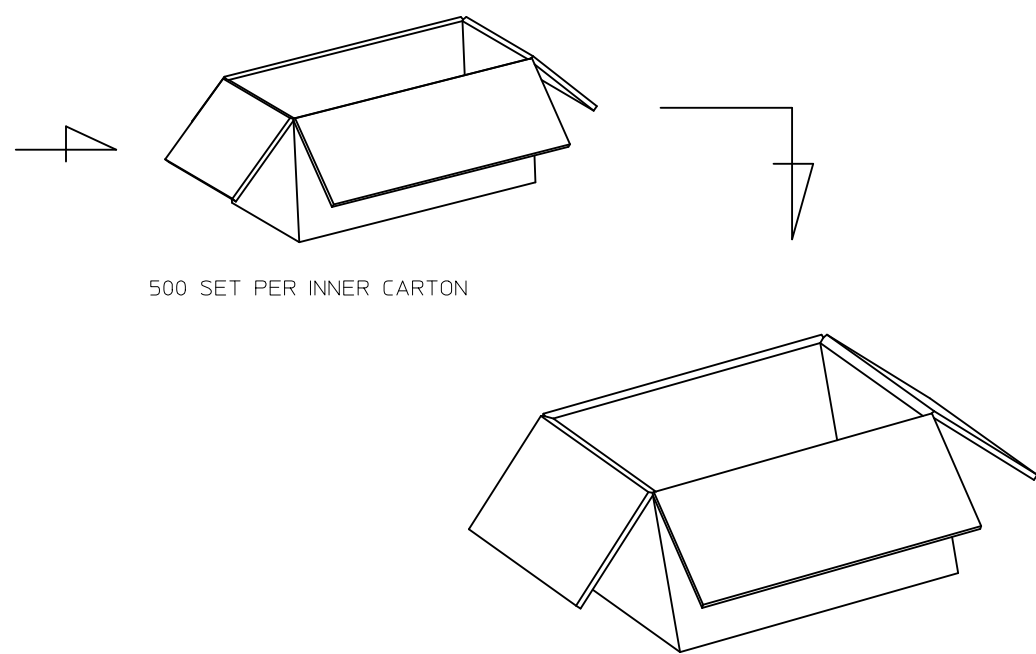
250 PCS SET PER BAG



P/N:89684-9012



250 PCS SET PER BAG



CHG:SEE SHEET 1 EC NO: URF2017-0393 DRAWN:YCHENG 2017/05/19 CHKD: APPR:YCHENG	QUALITY SYMBOLS	GENERAL TOLERANCES (UNLESS SPECIFIED)		DIMENSION STYLE	SCALE	DESIGN UNITS	THIRD ANGLE PROJECTION
		mm	INCH	MM/IN	2.5:1	METRIC	
		DRAFT WHERE APPLICABLE MUST REMAIN WITHIN DIMENSIONS		DRAWN BY	DATE	TITLE	
		ANGULAR ± 2°		YCHENG	2017/05/16	SMB PLUG FAKRA II STR. FOR RD316 500HM	
	MATERIAL NO.		CHECKED BY	DATE	APPROVED BY		DATE
	SIZE		YCHENG	2017/05/24	YCHENG		2017/05/24
REV	SEE TABLE		DOCUMENT NO.		SD-73403-781		SHEET NO.
A	C		THIS DRAWING CONTAINS INFORMATION THAT IS PROPRIETARY TO MOLEX INCORPORATED AND SHOULD NOT BE USED WITHOUT WRITTEN PERMISSION				3 OF 3