

Vertical PC Board Pin Headers

Product Specification:

Centerline spacing—.163 [4.14]

Material:

Housing—Nylon, white

Flammability Rating—UL94V-0

Contacts—Brass

Solder tail diameter .039 [1.00]

Related Product Data:

Performance Characteristics—
page 9050

Technical Documents: pages 9050
and 9080

Product Specification

108-1693 Mini-Universal MATE-N-LOK 2
Connectors

108-1694 Mini-Universal MATE-N-LOK 2
Headers

Mating Connectors:

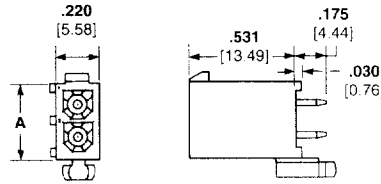
Mini-Universal MATE-N-LOK 2

Plug Housings— pages 9053 and
9054

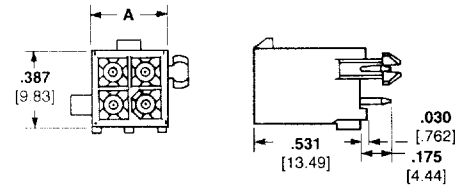
Mini-Universal MATE-N-LOK

Plug Housings— pages 9061 and
9062

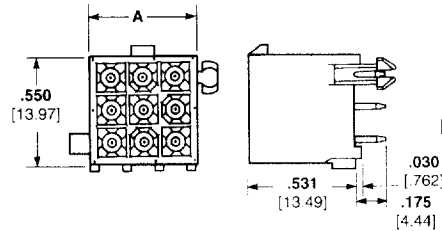
2 and 3 Circuit, In-Line



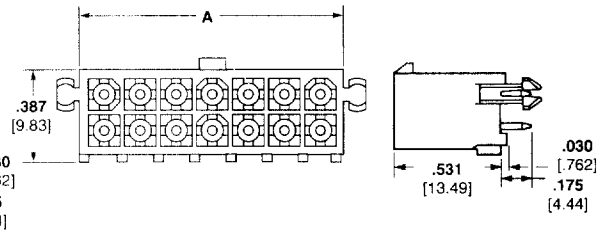
4, 6, 8, 10 and 12 Circuit, Double Row



9, 12 and 15 Circuit, Matrix



14, 16, 18, 20, 22 and 24 Circuit, Double Row



Number of Circuits	Style	A Dim.	Pin Finish	Vertical Pin Header Part Numbers		Mates with Plug Housing Part Numbers (Using Socket Contacts)	
				With Drain Holes	Without Drain Holes	Mini-UMNL	Mini-UMNL 2
2	In-Line	.387 9.83	Tin-Lead ¹	770166-1	770872-1	172165-1	794184-1
			Duplex ²	770166-2	770872-2		
3	In-Line	.550 13.97	Tin-Lead ¹	770170-1	770873-1	172166-1	794186-1
			Duplex ²	770170-2	770873-2		
4	Dual Row	.387 9.83	Tin-Lead ¹	770174-1	770874-1	172167-1	794188-1
			Duplex ²	770174-2	770874-2		
6	Dual Row	.550 13.97	Tin-Lead ¹	770178-1	770875-1	172168-1	794190-1
			Duplex ²	770178-2	770875-2		
8	Dual Row	.713 18.11	Tin-Lead ¹	794065-1	794073-1	770579-1	794192-1
			Duplex ²	794065-2	794073-2		
9	Matrix	.551 14.00	Tin-Lead ¹	770182-1	770876-1	172169-1	794194-1
			Duplex ²	770182-2	770876-2		
10	Dual Row	.877 22.28	Tin-Lead ¹	770743-1	770858-1	770580-1	794196-1
			Duplex ²	770743-2	770858-2		
12	Dual Row	1.039 26.39	Tin-Lead ¹	794066-1	770621-1	770581-1	794198-1
			Duplex ²	794066-2	770621-2		
12	Matrix	.713 18.11	Tin-Lead ¹	770186-1	794040-1	172170-1	794200-1
			Duplex ²	770186-2	794040-2		
14	Dual Row	1.202 30.53	Tin-Lead ¹	794067-1	794074-1	770582-1	794202-1
			Duplex ²	794067-2	794074-2		
15	Matrix	.877 22.28	Tin-Lead ¹	770190-1	770859-1	172171-1	794204-1
			Duplex ²	770190-2	770859-2		
16	Dual Row	1.365 34.67	Tin-Lead ¹	794068-1	794075-1	770583-1	794206-1
			Duplex ²	794068-2	794075-2		
18	Dual Row	1.528 38.81	Tin-Lead ¹	794069-1	794076-1	770584-1	794208-1
			Duplex ²	794069-2	794076-2		
20	Dual Row	1.691 42.95	Tin-Lead ¹	794070-1	794077-1	770585-1	794210-1
			Duplex ²	794070-2	794077-2		
22	Dual Row	1.854 47.09	Tin-Lead ¹	794071-1	794078-1	770586-1	794212-1
			Duplex ²	794071-2	794078-2		
24	Dual Row	2.017 51.23	Tin-Lead ¹	794072-1	794079-1	770587-1	794214-1
			Duplex ²	794072-2	794079-2		

¹ Tin-Lead Finish—Plated with .000150 [.00381] min. tin-lead over .000050 [.00127] min. nickel underplate on entire contact.

² Duplex Finish—Plated with .000030 [.000762] min. gold in mating area and matte tin-lead on solder tail end over .000050 [.00127] min. nickel underplate on entire contact.

For complete product information, order Catalog 82181

Pin and Socket Connectors