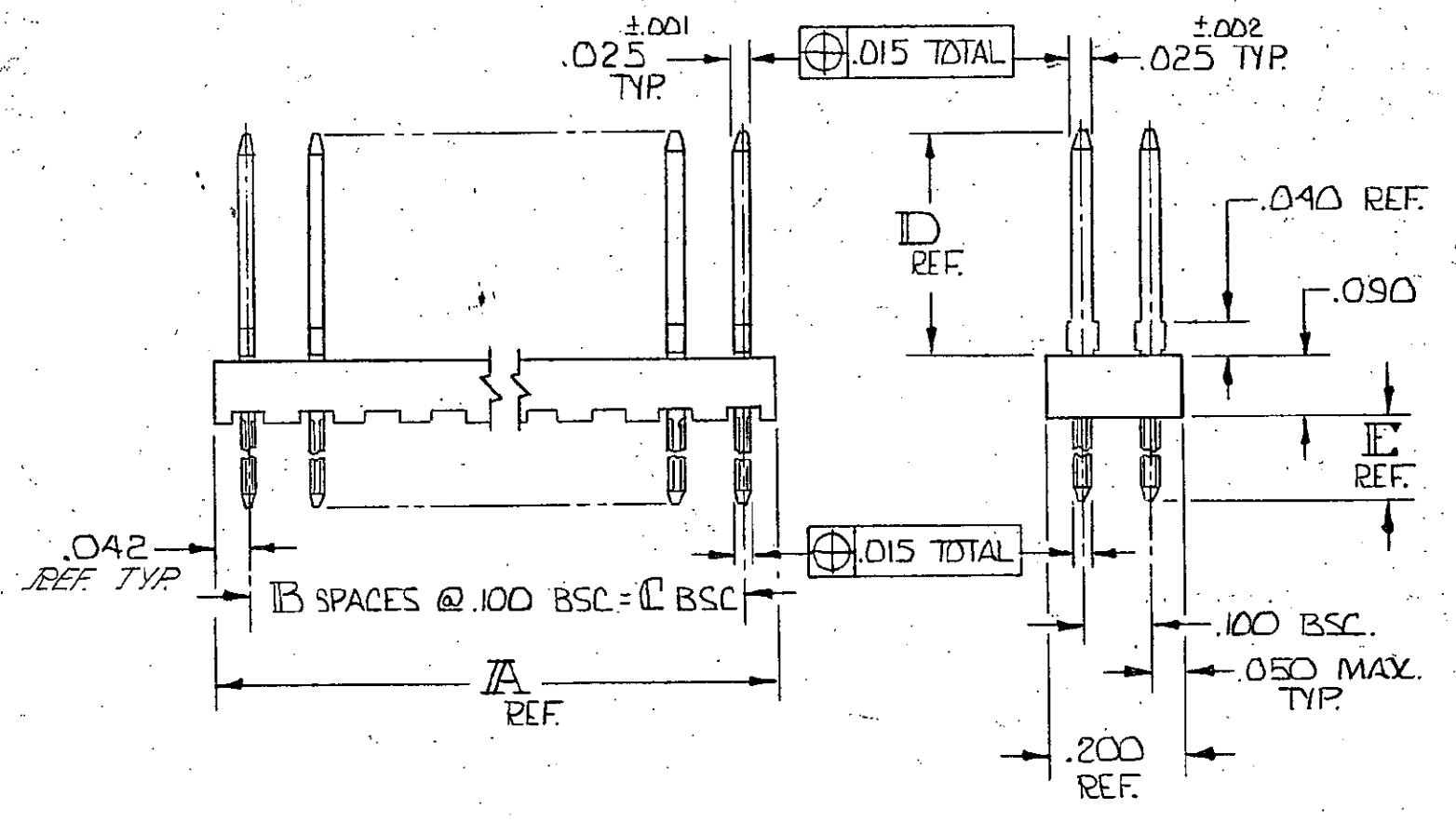
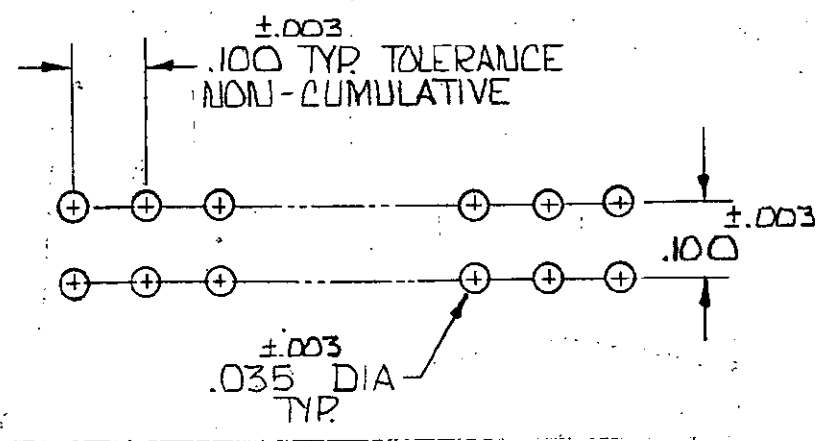


© COPYRIGHT 1975, 81 BY AMP INCORPORATED, HARRISBURG, PA.  
 ALL INTERNATIONAL RIGHTS RESERVED. AMP INCORPORATED PRODUCTS  
 COVERED BY U. S. AND FOREIGN PATENTS AND/OR PATENTS PENDING.

REVISIONS					
REV	ZONE	LTR	DESCRIPTION	DATE	APPROVED
✓		C	REVISED PARTS TO SPARKED POSTS EEN 1480 - DIM	7-20-71	
✓		A	ADDED NOTE 1 EEN 2762	10-5-78	BAW
✓		B	REV PER EEN 3976	6-18-81	DF
✓		B	REV EEN 4237	11-16-89	SD
✓		B	REV LOC & DIST AD-4171	11-27-89	BF
✓		C	REV PER AD-5159	7-15-91	RF
✓		D	REV PER AD-6037	12-30-91	RF
✓		E	REV PER 0010-1355-93	1-25-94	JK
✓		F	EC, 0010-1362-93	9/25/95	TH



1. TRUE POSITION TOLERANCE OF POST TIPS APPLIES WHEN HEADERS ARE HELD FLAT AGAINST PRINTED CIRCUIT BOARD.  
 △ OBSOLETE PART NUMBER



RECOMMENDED HOLE LAYOUT

	.125	.318	3.900	39	3.984	80	4-87543-0
			3.800	38	3.884	78	3-△ -9
			3.700	37	3.784	76	3-△ -8
			3.600	36	3.684	74	3-△ -7
			3.500	35	3.584	72	3-△ -6
SUPERSEDED BY 3-103322-5			3.400	34	3.484	70	3- -5
			3.300	33	3.384	68	3-△ -4
SUPERSEDED BY 3-103322-2			3.200	32	3.284	66	3-△ -3
			3.000	30	3.084	62	3-△ -1
SUPERSEDED BY 3-103322-0	.125	.318	2.900	29	2.984	60	3-87543-0
SUPERSEDED BY 2-103322-5			2.800	28	2.884	58	2- -9
			2.700	27	2.784	56	2-△ -8
			2.600	26	2.684	54	2-△ -7
			2.500	25	2.584	52	2-△ -6
			2.400	24	2.484	50	2- -5
			2.300	23	2.384	48	2-△ -4
			2.200	22	2.284	46	2-△ -3
			2.100	21	2.184	44	2-△ -2
SUPERSEDED BY 2-103322-1			2.000	20	2.084	42	2- -1
	.125	.318	1.900	19	1.984	40	2-87543-0
			1.800	18	1.884	38	1-△ -9
			1.700	17	1.784	36	1-△ -8
			1.600	16	1.684	34	1- -7
SUPERSEDED BY 1-103322-6			1.500	15	1.584	32	1- -6
			1.400	14	1.484	30	1- -5
SUPERSEDED BY 1-103322-4			1.300	13	1.384	28	1- -4
			1.200	12	1.284	26	1- -3
SUPERSEDED BY 1-103322-2			1.100	11	1.184	24	1- -2
			1.000	10	1.084	22	1- -1
	.125	.318	.900	9	.984	20	1-87543-0
SUPERSEDED BY 103322-9			.800	8	.884	18	-9
			.700	7	.784	16	-8
			.600	6	.684	14	-7
			.500	5	.584	12	-6
			.400	4	.484	10	-5
			.300	3	.384	8	-4
			.200	2	.284	6	-3
SUPERSEDED BY 103322-2			.100	1	.184	4	-2
	.125	.318	-	-	.084	2	87543-1

UNLESS OTHERWISE SPECIFIED DIMENSIONS ARE IN INCHES. TOLERANCES ON: DECIMALS ±.005 ANGLES ±	CONTRACT NO	AMP INCORPORATED Harrisburg, Pa.
	DR <i>D. J. [Signature]</i> 9/4/75	
MATERIAL HSG. - GLASS FILLED NYLON COLOR: BLACK CONTACT - PHOS. BRONZE	CHK <i>D. J. [Signature]</i> 9-4-75	SIZE CODE IDENT NO DRAWING NO C 00779 87543
FINISH CONTACT 000100 - 000200 BRIGHT TIN-LEAD OVER 000050 NICKEL	APPD <i>Bennett</i> 9/14/75 APPD <i>C. L. [Signature]</i> 9/16/75	SCALE
	DSGN APPD	SHEET 1 of 1
	OTHER APPD	

- [Home](#)
- [Part Number Search](#)
- [Document Search](#)
- [Text Search](#)
- [Alternate Part Search](#)
- [Multiple Part Comparison](#)
- [Alphabetical Search](#)
- [Brand Search](#)
- [Industry Product Search](#)
- [Product Type Search](#)
- [Product Family Search](#)
- [Competitor Cross Reference](#)
- [Lead Free Solutions](#)
- [Help/Glossary](#)

<b>Current Brand View</b>	<a href="#">View All Tyco Electronics Brands</a> Click to activate links to all other products
<b>AMP</b>	

**AMPMODU**  
**.100 & .150 Centerline Through Hole Headers**

**AMP** **1-87543-0** **Active** [Active](#)  
**(Tyco Electronics P/N: 1-87543-0)**

[Search for Parts](#) | [Previous](#) [1] [2](#) [Next](#)

Document links for this part cannot be displayed. Your browser does not support inline frames or is currently configured not to display inline frames. Inline frames are supported in both Internet Explorer 5 and Netscape 6, as well as all later versions of these browsers.

Related Part Information		
General Information	eCommerce	Related Part Information
<a href="#">General Info</a> <a href="#">Sales Info</a> <a href="#">Assembly Subcontractors</a>	<a href="#">Pricing</a> <a href="#">Product Availability</a>	

**Photos & Line Drawings** - The photographs and/or line drawings are representative images of a product for viewing purposes only.

[Product Photo](#)

Searchable Features:	
<b>Brand:</b>	AMP
<b>Header Type:</b>	Standard
<b>No. of Rows:</b>	Dual
<b>No. of Positions:</b>	20
<b>Mount Angle:</b>	Vertical
<b>PCB Retention Feature:</b>	Without
<b>Surface Mount Compatible:</b>	No
<b>Contact Mating Area Plating:</b>	Bright Tin-Lead
<b>Board Standoff:</b>	With
<b>Mounting Ears:</b>	Without

Other Properties:	
<b>Contact Shape:</b>	Square
<b>Post Size (mm [in]):</b>	0.64 [.025]
<b>Centerline, Matrix (mm [in]):</b>	2.54 x 2.54 [.100 x .100]
<b>Contact Material:</b>	Phosphor Bronze
<b>Housing Material:</b>	Thermoplastic
<b>Contact Termination Area Plating:</b>	Nickel
<b>Gender:</b>	Header
<b>Housing Flammability Rating:</b>	UL 94V-0

<b>Panel Attachment:</b>	No
<b>Mating Connector Lock:</b>	Without
<b>High Temperature Housing:</b>	No
<b>High Speed Serial Data Connector:</b>	No
<b>Termination Post Length (mm [in]):</b>	3.18 [0.125]

---

[Copyright](#) and [Privacy Statement](#)

Visit [Tyco International, Ltd.](#)

[Products](#) | [Catalog](#) | [Brands](#) | [Industries](#) | [Commerce](#) | [Supplier](#) | [Customer Service](#) | [About](#) | [Home](#)

- [Home](#)
- [Part Number Search](#)
- [Document Search](#)
- [Text Search](#)
- [Alternate Part Search](#)
- [Multiple Part Comparison](#)
- [Alphabetical Search](#)
- [Brand Search](#)
- [Industry Product Search](#)
- [Product Type Search](#)
- [Product Family Search](#)
- [Competitor Cross Reference](#)
- [Lead Free Solutions](#)
- [Help/Glossary](#)

<b>Current Brand View</b>	<a href="#">View All Tyco Electronics Brands</a> Click to activate links to all other products
<b>AMP</b>	

**AMPMODU**  
**.100 & .150 Centerline Through Hole Headers**

**AMP**    **87543-7**    **Active** [Active](#)  
**(Tyco Electronics P/N: 87543-7)**

[Search for Parts](#) | [Previous](#) [1] [2](#) [Next](#)

Document links for this part cannot be displayed. Your browser does not support inline frames or is currently configured not to display inline frames. Inline frames are supported in both Internet Explorer 5 and Netscape 6, as well as all later versions of these browsers.

Related Part Information		
General Information	eCommerce	Related Part Information
<a href="#">General Info</a> <a href="#">Sales Info</a> <a href="#">Assembly Subcontractors</a>	<a href="#">Pricing</a> <a href="#">Product Availability</a>	

**Photos & Line Drawings** - The photographs and/or line drawings are representative images of a product for viewing purposes only.

[Product Photo](#)

Searchable Features:	
<b>Brand:</b>	AMP
<b>Header Type:</b>	Standard
<b>No. of Rows:</b>	Dual
<b>No. of Positions:</b>	14
<b>Mount Angle:</b>	Vertical
<b>PCB Retention Feature:</b>	Without
<b>Surface Mount Compatible:</b>	No
<b>Contact Mating Area Plating:</b>	Bright Tin-Lead
<b>Board Standoff:</b>	With
<b>Mounting Ears:</b>	Without

Other Properties:	
<b>Contact Shape:</b>	Square
<b>Post Size (mm [in]):</b>	0.64 [.025]
<b>Centerline, Matrix (mm [in]):</b>	2.54 x 2.54 [.100 x .100]
<b>Contact Material:</b>	Phosphor Bronze
<b>Housing Material:</b>	Thermoplastic
<b>Contact Termination Area Plating:</b>	Nickel
<b>Gender:</b>	Header
<b>Housing Flammability Rating:</b>	UL 94V-0

<b>Panel Attachment:</b>	No
<b>Mating Connector Lock:</b>	Without
<b>High Temperature Housing:</b>	No
<b>High Speed Serial Data Connector:</b>	No
<b>Termination Post Length (mm [in]):</b>	3.18 [0.125]

---

[Copyright](#) and [Privacy Statement](#)

Visit [Tyco International, Ltd.](#)

[Products](#) | [Catalog](#) | [Brands](#) | [Industries](#) | [Commerce](#) | [Supplier](#) | [Customer Service](#) | [About](#) | [Home](#)