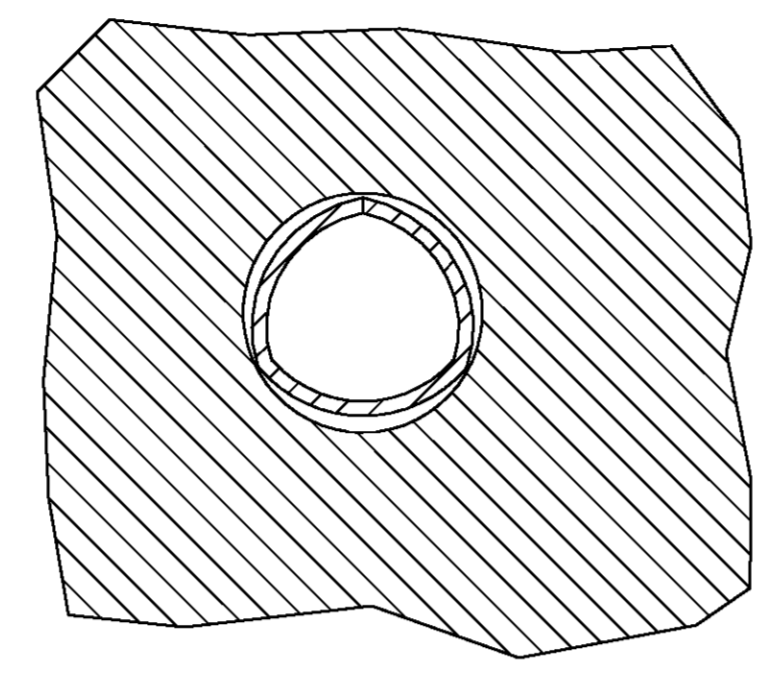
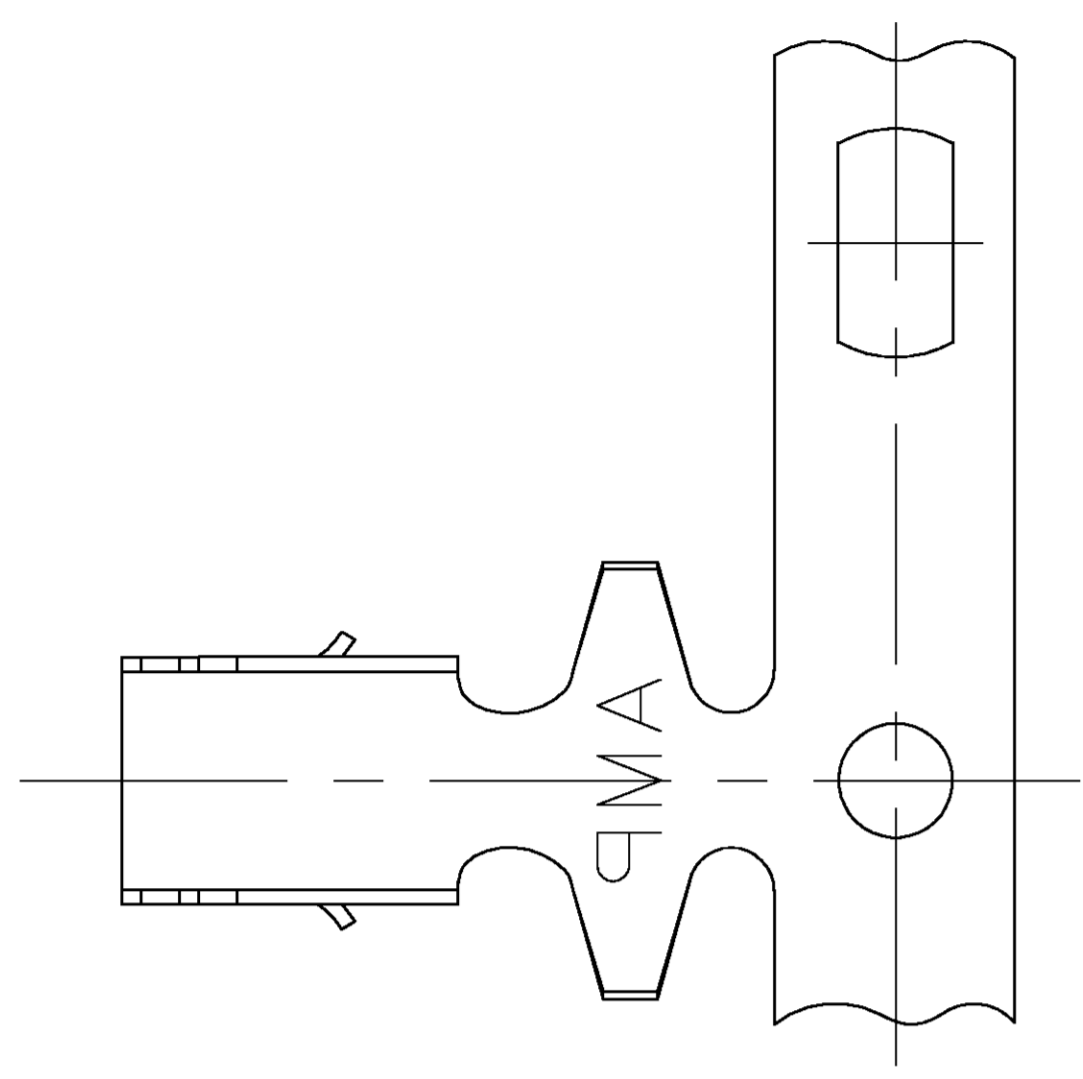
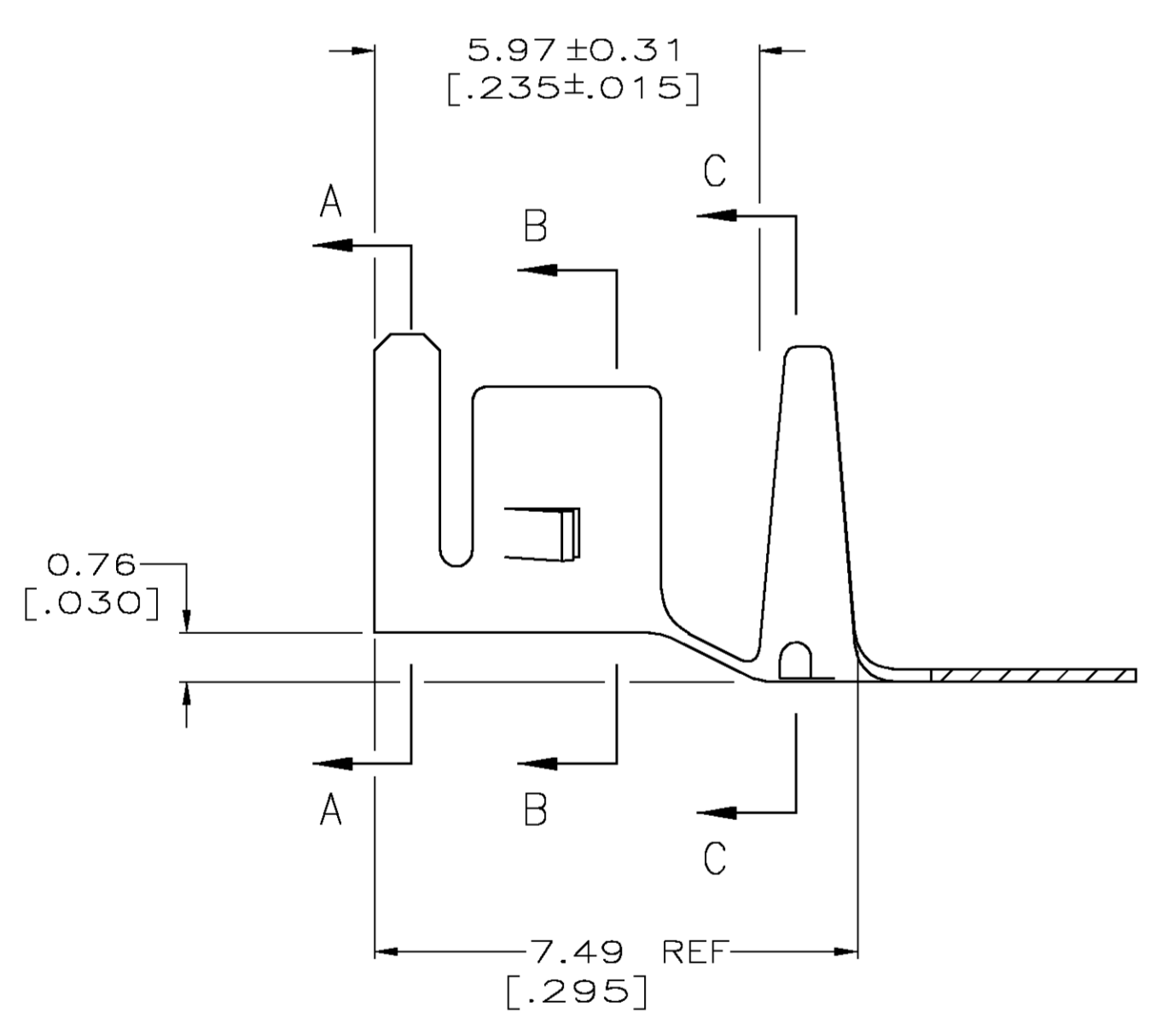


LOC	DIST	REVISIONS					
		REV	PER	ECN	DATE	DWN	APVD
CM	00	C	REV PER	ECN	OG3B-0422-03	22AUG03	SC JE

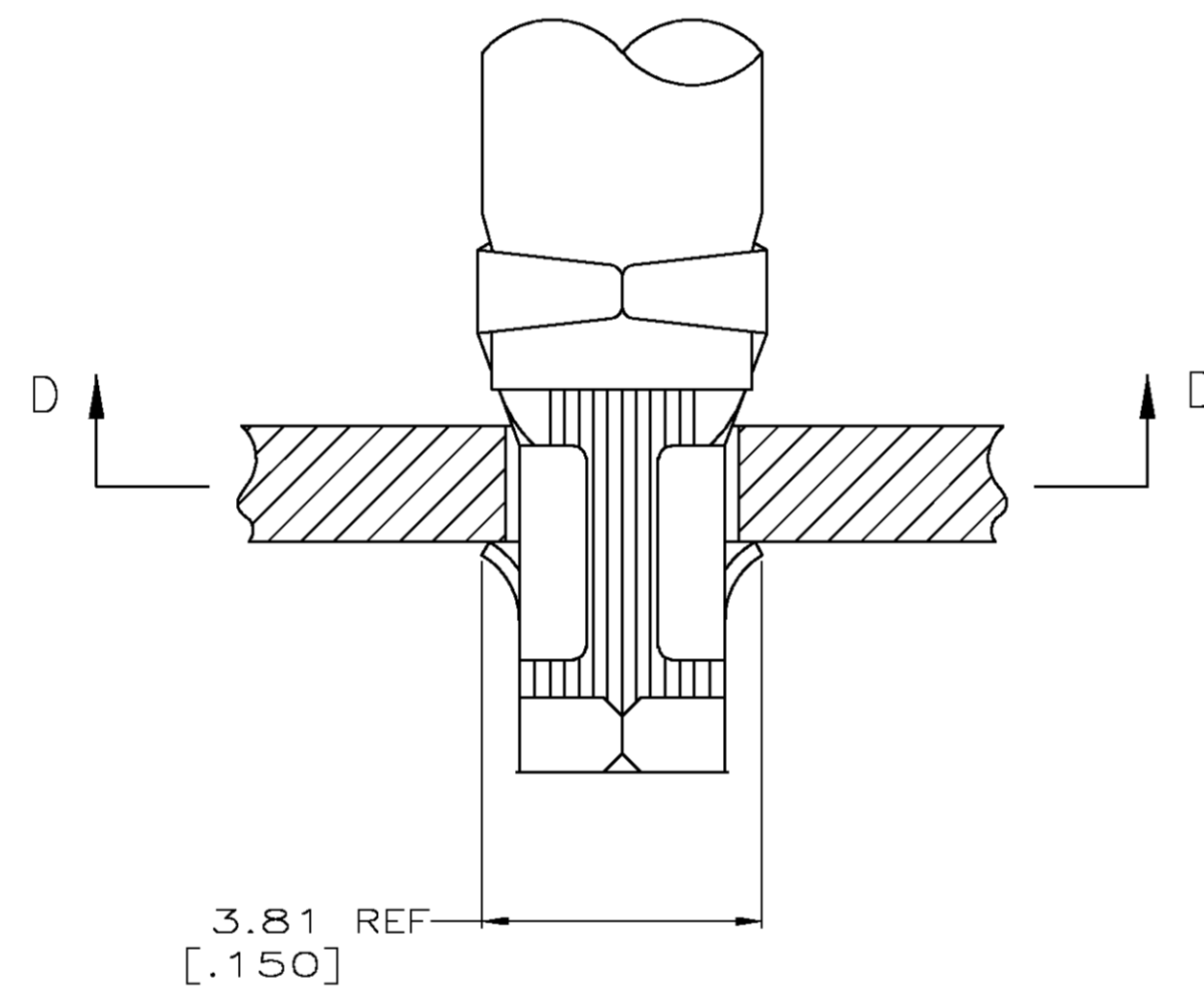


SECTION D-D

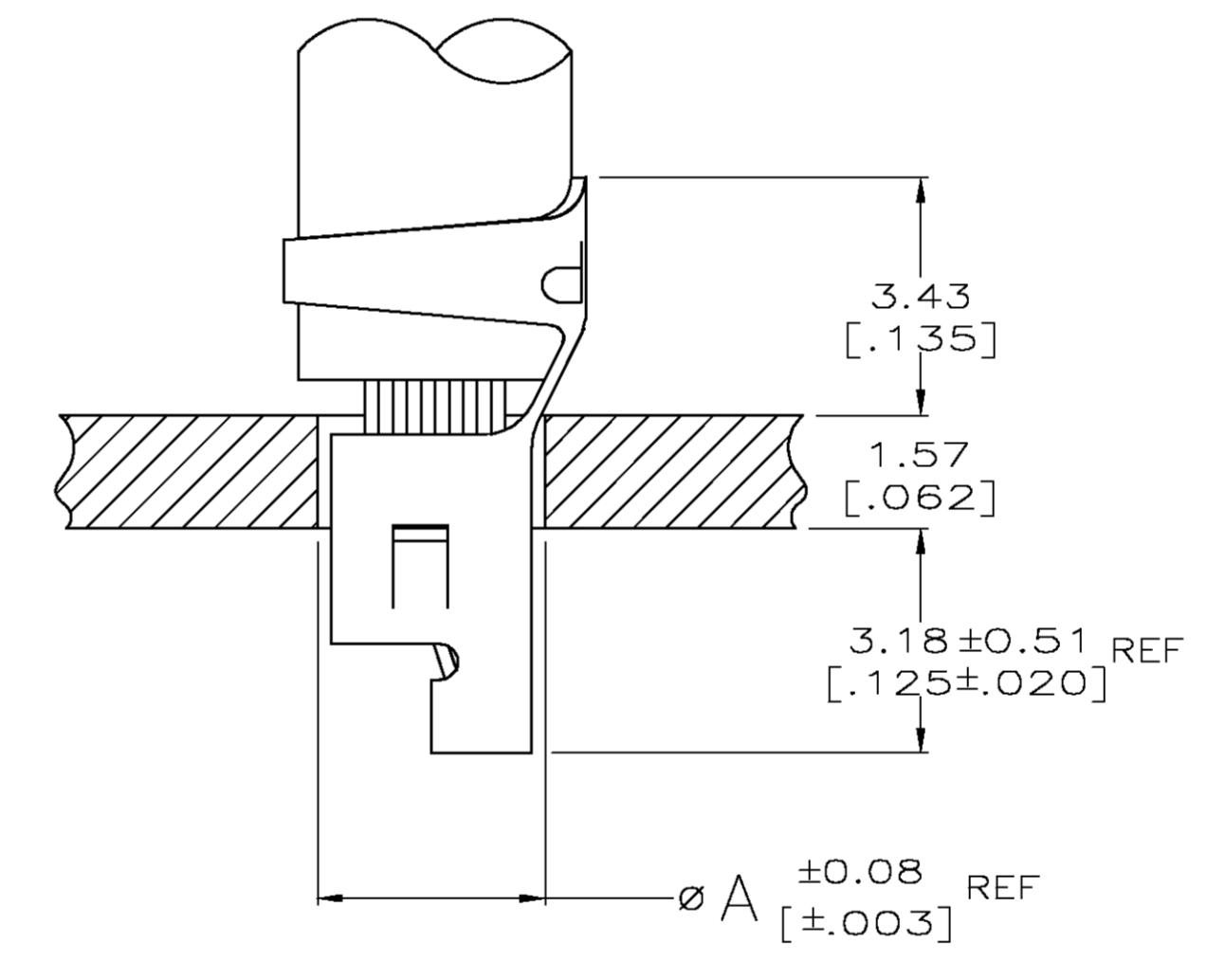
1. PARTS COMPLY WITH AMP SOLDERABILITY SPEC 109-11-3.
 2. WIRE RANGE: 3-5.5 mm² [12-10 AWG].
 3. INSULATION DIAMETER: 5.08 [.200] MAX.
 4. DIMENSIONS IN BRACKETS ARE IN INCHES.
- △ 0.00508 [.000200] MIN BRIGHT TIN-LEAD.
 △ 0.00508 [.000200] MIN BRIGHT TIN.



SECTION A-A

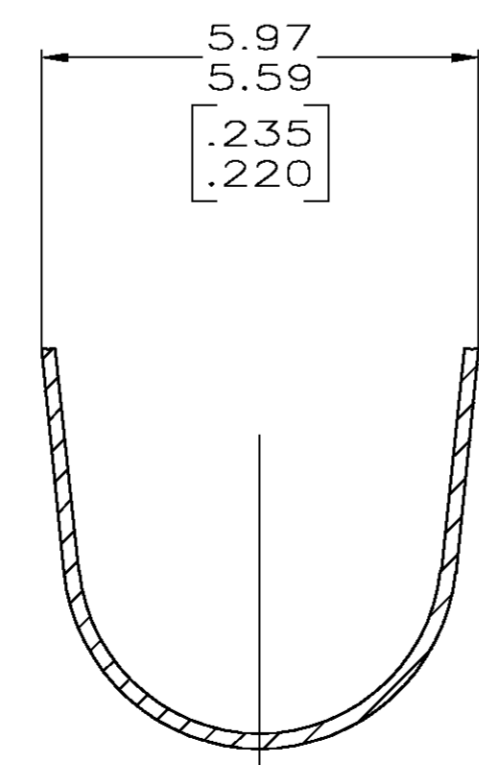
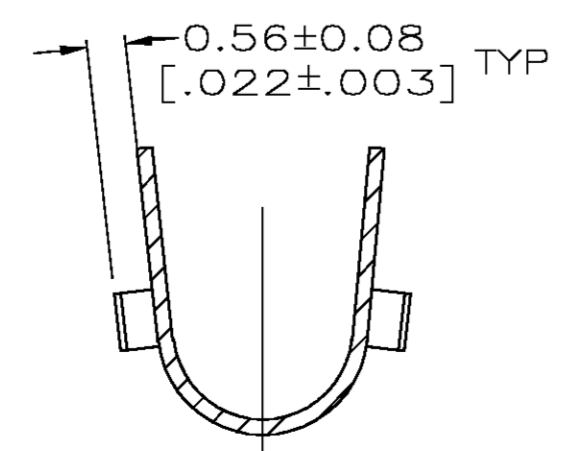
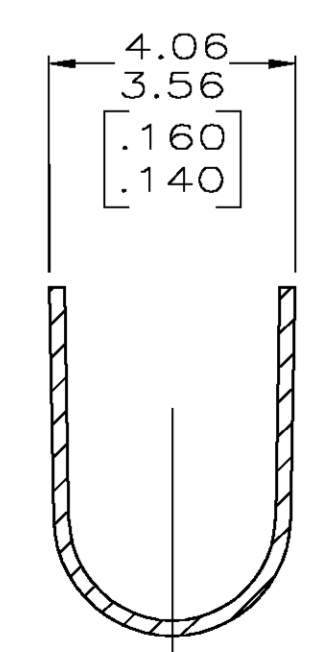


SECTION B-B



SECTION C-C

3.76 [.148]	10
3.18 [.125]	12
A	AWG



METRIC

THIS DRAWING IS A CONTROLLED DOCUMENT.

DW: S. CARPENTER 22AUG2003	Tyco Electronics Corporation Harrisburg, PA 17105
CHK: J. ELLIS 22AUG2003	
APVD: J. ELLIS 22AUG2003	NAME: TERMINAL, AMP-IN
PRODUCT SPEC	APPLICATION SPEC
SIZE: CAGE CODE: DRAWING NO:	RESTRICTED TO:
WEIGHT: A1 00779 C=794037	SCALE: 10:1 SHEET 1 OF 1 REV. C
CUSTOMER DRAWING	

AMP 4805 REV 31MAR2000