

776491-2 ✓ ACTIVE

AMP | AMPSEAL 16

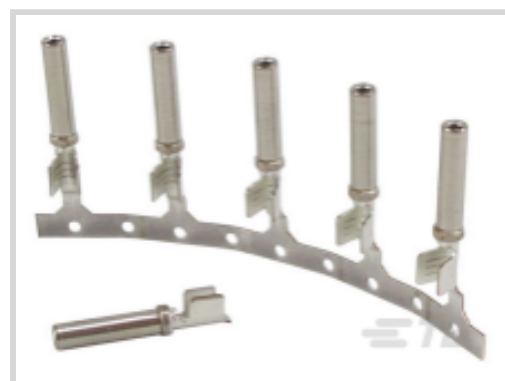
TE Internal #: 776491-2

Automotive Terminals, Socket, Pin Diameter .063 in [1.59 mm], 18 – 14 AWG Wire Size, .8 – 2 mm<sup>2</sup> Wire Size, Locking Clean Body, AMPSEAL 16

[View on TE.com >](#)



Terminals & Splices > Automotive Terminals > Contacts: Size 16, 13A



Terminal Type: **Socket**

Mating Pin Diameter: 1.59 mm [ .063 in ]

Terminal Transmits: 0 – 24 A (Low Power)

Wire Size: .8 – 2 mm<sup>2</sup>

[All Contacts: Size 16, 13A \(33\)](#)

## Features

### Product Type Features

Receptacle Style	180°
Sealable	No
Primary Locking Feature	Clean Body

### Contact Features

Contact Size	Size 16
Contact Fabrication	Stamped & Formed
Typical Current Rating	13 A
Crimp Type	F-Crimp
Terminal Type	Socket
Mating Pin Diameter	1.59 mm [.063 in]
Interface Plating	Nickel (Ni)

### Termination Features

Termination Method to Wire & Cable	Crimp
Product Terminates To	Wire

### Dimensions

Wire Size	.8 – 2 mm <sup>2</sup>
-----------	------------------------



Wire Size Search	14 AWG, 15 AWG, 16 AWG, 17 AWG, 18 AWG
------------------	--

Wire Insulation Diameter	1.95 – 3.93 mm [.077 – .155 in]
--------------------------	---------------------------------

### Usage Conditions

Insulation Option	Uninsulated
-------------------	-------------

Operating Temperature (Max)	80 °C, 85 °C, 90 °C, 100 °C, 105 °C, 110 °C, 120 °C [176 °F][185 °F][194 °F][212 °F][221 °F][230 °F][248 °F]
-----------------------------	--

Operating Temperature Range	-40 – 120 °C [-40 – 248 °F]
-----------------------------	-----------------------------

### Operation/Application

Compatible With Wire Base Material	Copper
------------------------------------	--------

### Packaging Features

Packaging Method	Reel
------------------	------

Packaging Quantity	4000
--------------------	------

### Other

Terminal Transmits	0 – 24 A (Low Power)
--------------------	----------------------

## Product Compliance

[For compliance documentation, visit the product page on TE.com>](#)

EU RoHS Directive 2011/65/EU	Compliant
------------------------------	-----------

EU ELV Directive 2000/53/EC	Compliant
-----------------------------	-----------

China RoHS 2 Directive MIIT Order No 32, 2016	No Restricted Materials Above Threshold
---	---

EU REACH Regulation (EC) No. 1907/2006	Current ECHA Candidate List: JUNE 2022 (224) Candidate List Declared Against: JUNE 2022 (224) Does not contain REACH SVHC
--	---

Halogen Content	Low Halogen - Br, Cl, F, I < 900 ppm per homogenous material. Also BFR/CFR/PVC Free
-----------------	---

Solder Process Capability	Not applicable for solder process capability
---------------------------	--

#### Product Compliance Disclaimer


This information is provided based on reasonable inquiry of our suppliers and represents our current actual knowledge based on the information they provided. This information is subject to change. The part numbers that TE has identified as EU RoHS compliant have a maximum concentration of 0.1% by weight in homogenous materials for lead, hexavalent chromium, mercury, PBB, PBDE, DBP, BBP, DEHP, DIBP, and 0.01% for cadmium, or qualify for an exemption to these limits as defined in the Annexes of Directive 2011/65/EU (RoHS2). Finished electrical and electronic equipment products will be CE marked as required by Directive 2011/65/EU. Components may not be CE marked. Additionally, the part

numbers that TE has identified as EU ELV compliant have a maximum concentration of 0.1% by weight in homogenous materials for lead, hexavalent chromium, and mercury, and 0.01% for cadmium, or qualify for an exemption to these limits as defined in the Annexes of Directive 2000/53/EC (ELV). Regarding the REACH Regulation, the information TE provides on SVHC in articles for this part number is based on the latest European Chemicals Agency (ECHA) 'Guidance on requirements for substances in articles' posted at this URL: <https://echa.europa.eu/guidance-documents/guidance-on-reach>

## Compatible Parts



TE Part # CAT-AM7801-CH8172  
AMPSEAL 16 HOUSINGS



TE Part # CAT-H991-CH8172  
AMPSEAL 16 HYBRID LEVER HOUSINGS



TE Part # 2305570-1  
TERMINAL CUTTER, SIDE FEED



TE Part # 1924463-1  
PIN, SF, SIZE 16, 18-20 AWG, AU/SN



TE Part # 2-2151239-1  
OCEAN\_2.0\_Applicator-S-100F



TE Part # 2-2151239-2  
OCEAN\_2.0\_Applicator-S-100F



TE Part # 2151239-1  
OCEAN\_2.0\_Applicator-S-100F



TE Part # 2151239-2  
OCEAN\_2.0\_Applicator-S-100F



TE Part # 2217753-1  
CCII SOCKET PIN CONT 18-14 ASSY



TE Part # 7-2151239-1  
OCEAN\_2.0\_Applicator-S-100F




TE Part # 7-2151239-2  
OCEAN\_2.0\_Applicator-S-100F




TE Part # 7-2151239-7  
OCEAN\_2.0\_SPARE\_PART\_KIT-100F


## Also in the Series | AMPSEAL 16



Automotive Connector Caps & Covers (85)



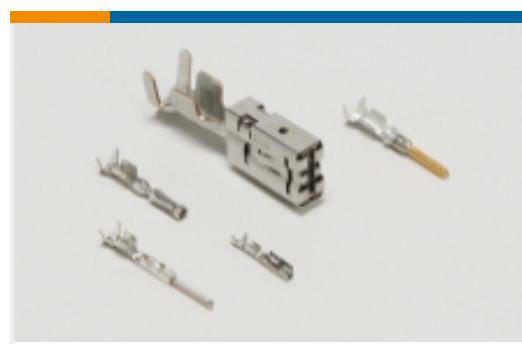
Automotive Connector Locks & Position Assurance(2)



Automotive Housings(241)



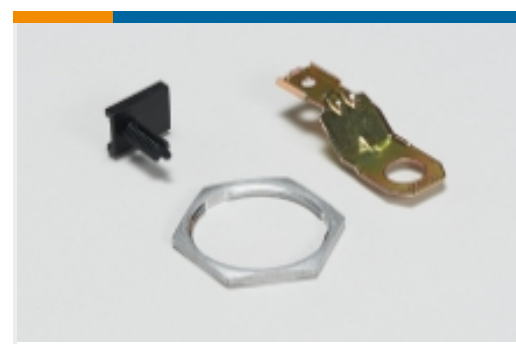
Automotive Seals & Cavity Plugs(4)



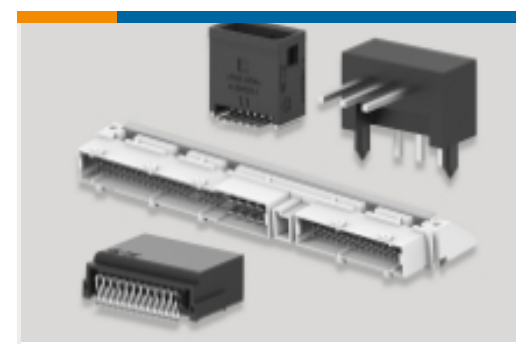
Automotive Terminals(33)



Data Connectivity Housings(3)



Other Automotive Connector Accessories(11)



PCB Headers &amp; Receptacles(3)

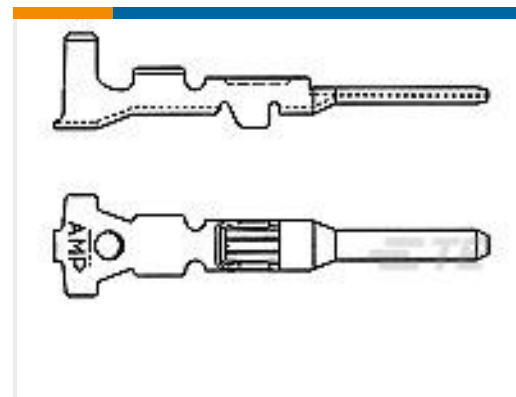
## Customers Also Bought



TE Part #2035366-9  
Backshell, AS16, 4P, 90Deg, NC12, LP, Plug



TE Part #1747731-1  
0.64/1.0 SEALED 49POS PLUG ASSY, C KEY



TE Part #282404-3  
MINI MIC TAB CTC GOLD PLATED V



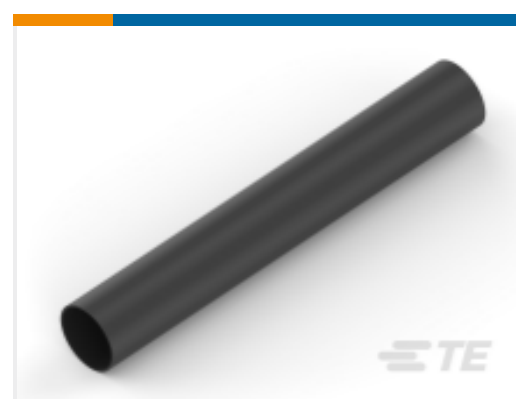
TE Part #HDP24-24-33SN-L017  
REC, 33P, BLK, N, RNG, 20, S



TE Part #925467-1  
POS-MATE REC HSG 4P



TE Part #7-2150980-1  
OCEAN-2.0-APPLICATOR-E-090F140F



TE Part #NB11716001  
ATUM-8/2-0-35MM



TE Part #1747140-1  
SEALED EFI ECU 0.64/2.3II 60POS PLUG ASS



TE Part #7G7918-12  
SEAL PLUG, SIZE 12, YEL



TE Part #6-1105151-1  
HSS-C-Bu.Ag.25,0 qmm

## Documents

### Product Drawings

SOC, SF, SIZE 16, 14-18 AWG, NO INS, NI/SN

English

### CAD Files

3D PDF

English

### Customer View Model

ENG\_CVM\_776491-2\_B.3d\_igs.zip



English

**Customer View Model**

[ENG\\_CVM\\_776491-2\\_B.3d\\_stp.zip](#)

English

**Customer View Model**

[ENG\\_CVM\\_776491-2\\_B.2d\\_dxf.zip](#)

English

By downloading the CAD file I accept and agree to the [Terms and Conditions](#) of use.

---

## Datasheets & Catalog Pages

[ICT Terminals and Connectors Catalogue](#)

English

[CONNECTOR SELECTOR](#)

English

---

## Product Specifications

[Product Specification](#)

English

---

## Product Environmental Compliance

[MD\\_776491-2\\_011720182149\\_dmtec](#)

English

[MD\\_776491-2\\_011720182149\\_dmtec](#)

English