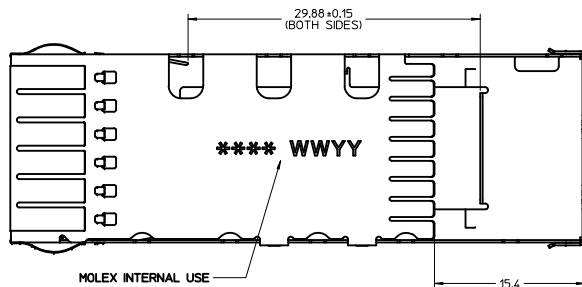


PART NO. AND WEEK/YEAR DATE CODE TO BE PRINTED ON SIDE OF COMPLETED CAGE ASSEMBLY APPROXIMATELY AS SHOWN. SEE TABLE BELOW FOR DATE CODE INFORMATION.

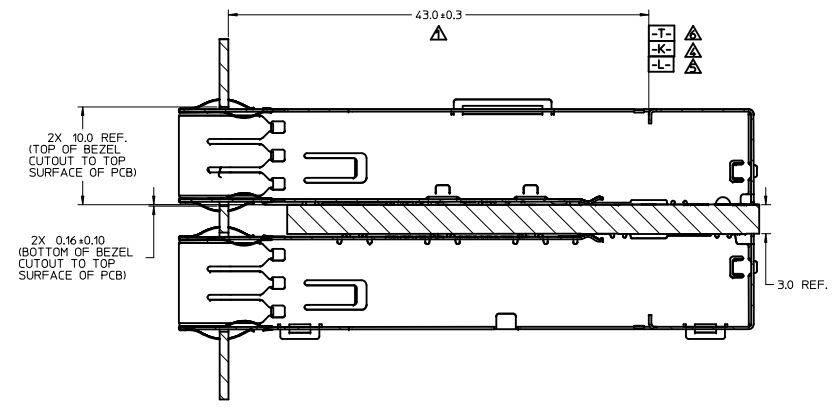
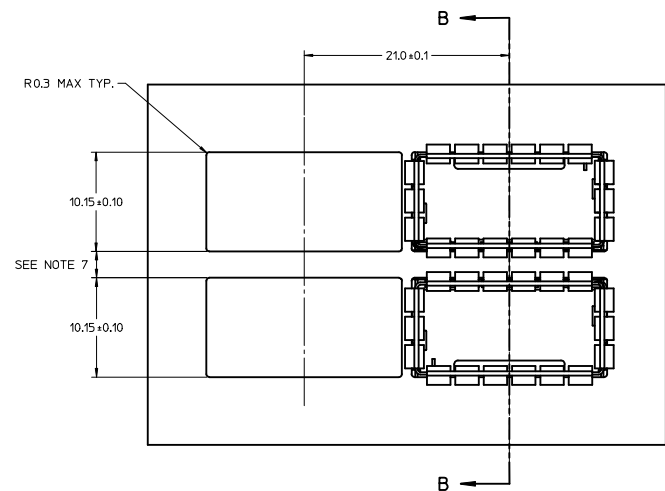
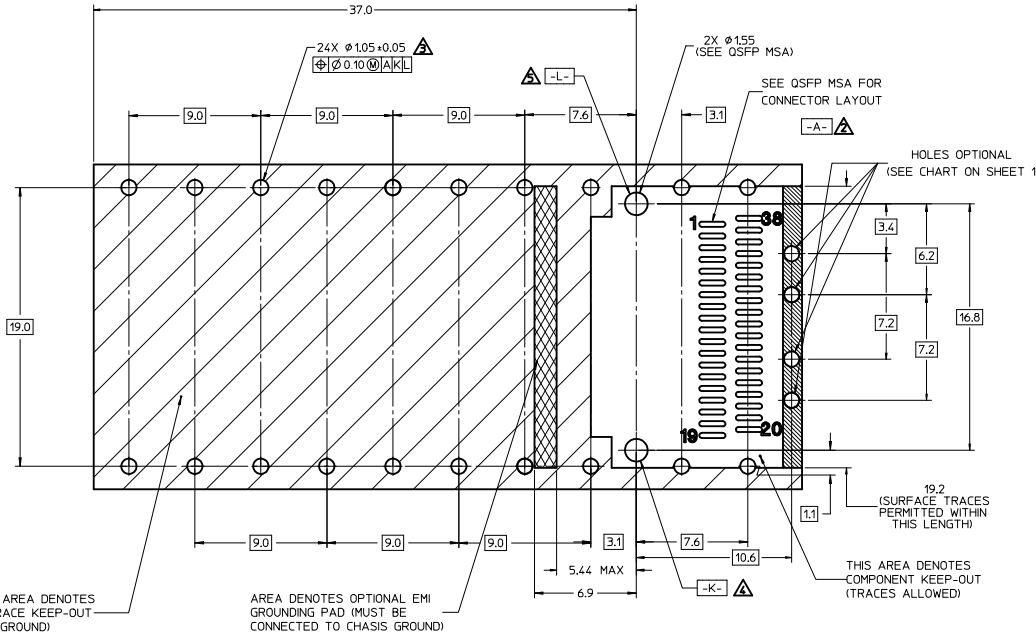
| WEEK/YEAR DATE CODE TABLE | |
|---------------------------|--|
| WEEK | 01 THRU 52 EXAMPLE: 01 = FIRST WEEK OF YEAR 52 = LAST WEEK OF YEAR |
| YEAR | 10, 11, 12 ETC. EXAMPLE: YEAR 2010 = 10 |



| FINISHED ASSEMBLY P/N | DESCRIPTION | # OF REAR LEGS | HEAT SINK OPENING |
|-----------------------|--|----------------|-------------------|
| 747501100 | QSFP+ 1X1 CAGE W/ EMI SPRING FINGER - PRESS FIT | 2 | OPEN TOP |
| 747501101 | QSFP+ 1X1 CAGE W/ EMI SPRING FINGER - PRESS FIT | 0 | OPEN TOP |
| 747501102 | QSFP+ 1X1 CAGE W/ EMI SPRING FINGER - PRESS FIT | 2 | CLOSED TOP |
| 747501103 | QSFP+ 1X1 CAGE W/ EMI SPRING FINGER - PRESS FIT | 0 | CLOSED TOP |

- NOTES:
- PRESS FIT LEGS 2.28mm [0.090"] LONG
 - SINGLE SIDED BOARD THICKNESS
NOMINAL: 1.60 [0.062"]
MINIMUM: 1.44 [0.057"]
BELLY TO BELLY BOARD THICKNESS
NOMINAL: 2.30 [0.090"]
MINIMUM: 2.07 [0.081"]
 - MATERIAL: COPPER ALLOY
PLATING: NICKEL
 - REFERENCE DOCUMENTS: PRODUCT SPECIFICATION: QSFP MSA
 - LEAD FREE, NO RoHS EXEMPTIONS.

| | | | | | | | |
|--|---|---|--|----------------------------|-------|--|--|
| DATE CODE & NOTES EC NO: CPG2012-0844 DRAWN BY: DRWNBSWAJA CHECKED BY: CHKCHIRSCHY APPROVED BY: APPRKLLOYD | DESCRIPTION 2011/04/06 2012/02/22 2012/03/20 | QUALITY SYMBOLS | GENERAL TOLERANCES (UNLESS SPECIFIED) | DIMENSION STYLE | SCALE | DESIGN UNITS | THIRD ANGLE PROJECTION |
| | | ∇=0 ∇=0 ∇=0 | 4 PLACES ± --- + --- 3 PLACES ± --- + --- 2 PLACES ± 0.13 + --- 1 PLACE ± 0.25 + --- 0 PLACE ± ± | MM ONLY | 4:1 | METRIC | DRAWN BY: BCHEN06_USY CHECKED BY: CHIRSCHY APPROVED BY: RMAHMOOD DATE: 2010/05/13 DATE: 2010/05/13 DATE: 2010/11/01 |
| MATERIAL NO. SEE TABLE | | DRAFT WHERE APPLICABLE MUST REMAIN WITHIN DIMENSIONS | | DOCUMENT NO. SD-74750-1100 | | TITLE: QSFP+ 1X1 CAGE ASSY WITH SPRING FINGERS | |
| SHEET NO. 1 OF 3 | | THIS DRAWING CONTAINS INFORMATION THAT IS PROPRIETARY TO MOLEX INCORPORATED AND SHOULD NOT BE USED WITHOUT WRITTEN PERMISSION | | | | | |



Section B-B
Scale 4:1

CROSS HATCHED AREA DENOTES COMPONENT & TRACE KEEP-OUT (EXCEPT CHASSIS GROUND)

AREA DENOTES OPTIONAL EMI GROUNDING PAD (MUST BE CONNECTED TO CHASSIS GROUND)

THIS AREA DENOTES COMPONENT KEEP-OUT (TRACES ALLOWED)

| | | | | | | |
|---|-----------------|--|-----------------|---------------|--|------------------------|
| DATE CODE & NOTES IEC NO: CPG2012-0844 D DRYNBSWAJA 2011/04/06 CHYDCHRSCHY 2012/02/22 APPR:KLLOYD 2012/03/20 | QUALITY SYMBOLS | GENERAL TOLERANCES (UNLESS SPECIFIED) | DIMENSION STYLE | SCALE | DESIGN UNITS | THIRD ANGLE PROJECTION |
| | ▽=0 | 4 PLACES ± mm ± INCH | MM ONLY | 1:1 | METRIC | ☉ |
| | ▽=0 | 3 PLACES ± 0.13 ± 0.25 | | | | |
| | ▽=0 | 1 PLACE ± 0.25 | | | | |
| | | ANGULAR ± 1 ° | | | | |
| | | DRAFT WHERE APPLICABLE MUST REMAIN WITHIN DIMENSIONS | | | | |
| | | | DRAWN BY | DATE | TITLE | |
| | | | BCHEN06_USY | 2010/05/13 | QSF+ 1X1 CAGE ASSY WITH SPRING FINGERS | |
| | | | CHECKED BY | DATE | | |
| | | | CHRSCHY | 2010/05/13 | | |
| | | | APPROVED BY | DATE | | |
| | | | RAHMOOD | 2010/11/01 | | |
| | | | MATERIAL NO. | DOCUMENT NO. | | |
| | | | SEE SHEET 1 | SD-74750-1100 | | |
| | | | | | | SHEET NO. 3 OF 3 |

THIS DRAWING CONTAINS INFORMATION THAT IS PROPRIETARY TO MOLEX INCORPORATED AND SHOULD NOT BE USED WITHOUT WRITTEN PERMISSION