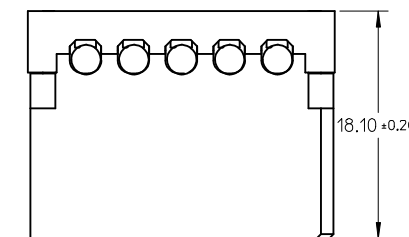
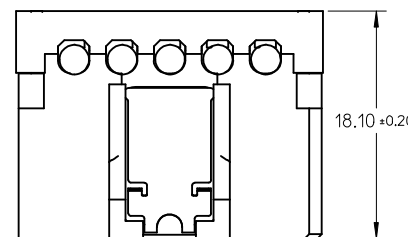
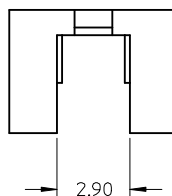
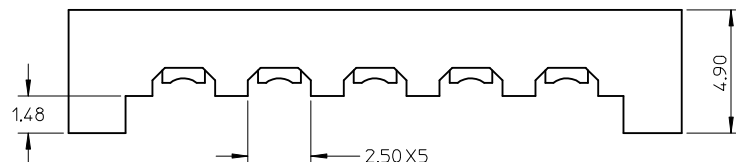
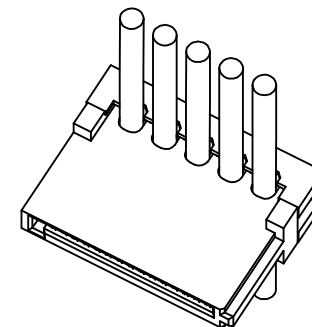
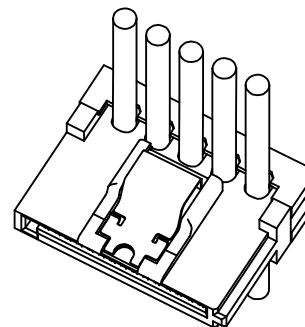
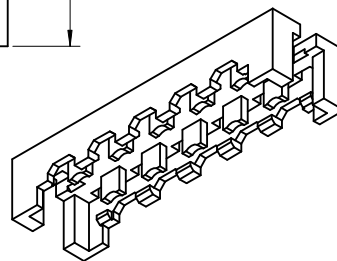
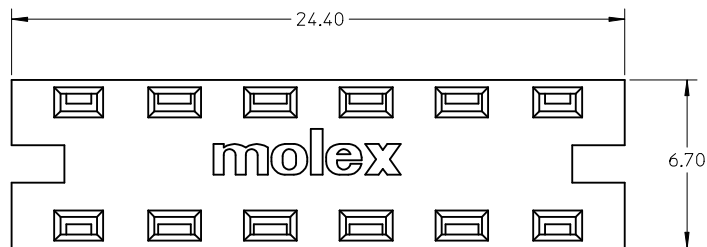


10 9 8 7 6 5 4 3 2 1



APPLICATION FOR WITH LATCH TYPE

APPLICATION FOR WITHOUT LATCH TYPE

P/N	REMARK
67926-0041	NON HALOGEN-FREE
67926-0841	HALOGEN-FREE

NOTE

- 1 MATERIAL: THERMAL PLASTIC, COLOR : BLACK UL94V-0.
- 2 THIS COVER IS FEED THROUGH TYPE, IT IS AVAILABLE FOR 67926-000*/002*(WITH LATCH), 67926-001*(WITHOUT LATCH).
- 3 PACKAGE SPEC:
 - 3.1 1000 PCS IN ONE BAG.
 - 3.2 3000 PCS(3 PAGES) IN ONE INNER CARTON.
 - 3.3 12,000 PCS(4 INNER CARTONS) IN ONE OUTER CARTON.

ADD PART NUMBER EC NO: SH2009-0536 TDRWN:XJ.SONG 2009/05/05 CH'KD:XJ.SONG 2009/06/19 APPR:HWANG 2009/06/23	QUALITY SYMBOLS	GENERAL TOLERANCES (UNLESS SPECIFIED)	DIMENSION STYLE	SCALE	DESIGN UNITS	THIRD ANGLE PROJECTION
	▽=0 ◻=0	4 PLACES ± --- ± --- 3 PLACES ± --- ± --- 2 PLACES ± 0.15 ± --- 1 PLACE ± 0.25 ± --- ANGULAR ± 1 °	MM ONLY	5:1	METRIC	
	REV	DRAFT WHERE APPLICABLE MUST REMAIN WITHIN DIMENSIONS	DRAWN BY DATE	TITLE		
			GRATE MA 2004/04/25	COVER FOR SATA POWER CONNECTOR IDT TYPE		

APPROVED BY DATE	MOLEX INCORPORATED	
SAM 2004/04/25	DOCUMENT NO.	SHEET NO.
	SD-67926-004	1 OF 1

MATERIAL NO.	THIS DRAWING CONTAINS INFORMATION THAT IS PROPRIETARY TO MOLEX INCORPORATED AND SHOULD NOT BE USED WITHOUT WRITTEN PERMISSION	
SEE TABLE	SIZE A3	

9 8 7 6 5 4 3 2 1