

FEATURES AND SPECIFICATIONS

Features and Benefits

- Sizes 2 to 25 circuits
- Used primarily for remote interconnections
- Locking crown secures positive latch to connector
- Polarization slots guide front ribs of mating connector to prevent pin damage

Physical

Housing: Black glass-filled polyester, UL 94V-0
 Operating Temperature: -40 to +105°C



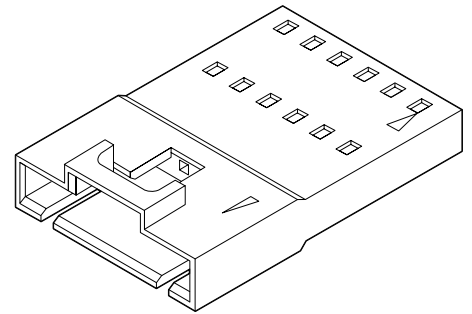
2.54mm (.100") Pitch

SL™

**Wire-to-Wire
 Connector**

70107

**Single Row, Version A
 Without Mounting Ears**



Reference Information

Product Specification: PS-70021

Packaging: Bag

UL File No.: E29179

CSA File No.: LR19980

Mates With: 70066G, 70066N, 70400G and 70430G
 connector assemblies

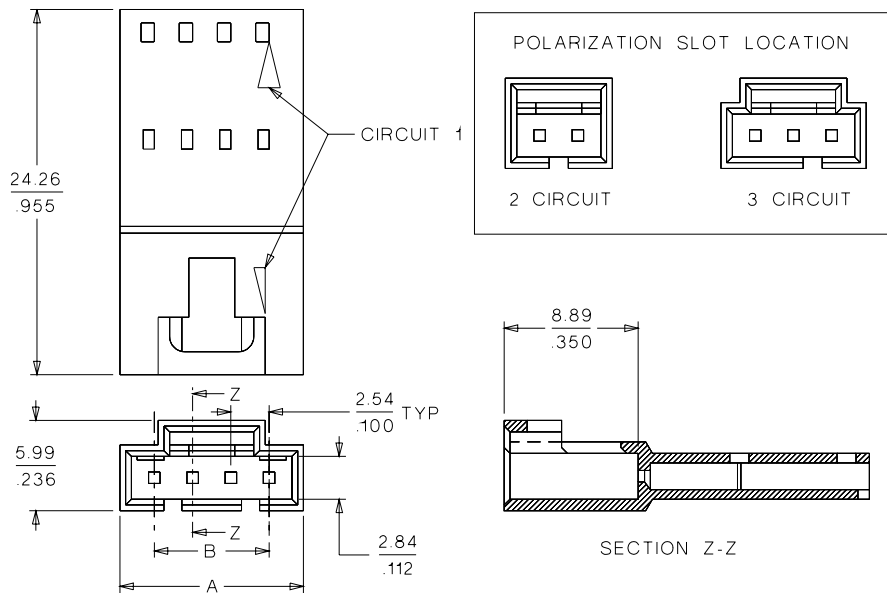
Use With: 70021 crimp terminals

Designed In: Inches

2.54mm (.100") Pitch

CATALOG DRAWING (FOR REFERENCE ONLY)

Not For Use With C-Grid III™ Components



ORDERING INFORMATION AND DIMENSIONS

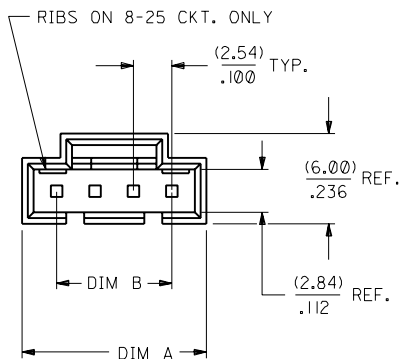
Circuits	Order No.	Dimension	
		A	B
2	• 70107-0001	7.11 (.280)	2.54 (.100)
3	• 70107-0002	9.65 (.380)	5.08 (.200)
4	• 70107-0003	12.19 (.480)	7.62 (.300)
5	• 70107-0004	14.73 (.580)	10.16 (.400)
6	• 70107-0005	17.27 (.680)	12.70 (.500)
7	• 70107-0006	19.81 (.780)	15.24 (.600)
8	• 70107-0007	22.35 (.880)	17.78 (.700)
9	• 70107-0008	24.89 (.980)	20.32 (.800)
10	• 70107-0009	27.43 (1.080)	22.86 (.900)
11	• 70107-0010	29.97 (1.180)	25.40 (1.000)
12	• 70107-0011	32.51 (1.280)	27.94 (1.100)
13	• 70107-0012	35.05 (1.380)	30.48 (1.200)

Circuits	Order No.	Dimension	
		A	B
14	• 70107-0013	37.59 (1.480)	33.02 (1.300)
15	• 70107-0014	40.13 (1.580)	33.56 (1.400)
16	• 70107-0015	42.67 (1.680)	38.10 (1.500)
17	• 70107-0016	45.21 (1.780)	40.64 (1.600)
18	• 70107-0017	47.75 (1.880)	43.18 (1.700)
19	• 70107-0018	50.29 (1.980)	45.72 (1.800)
20	• 70107-0019	52.83 (2.080)	48.26 (1.900)
21	• 70107-0020	55.37 (2.180)	50.80 (2.000)
22	• 70107-0021	57.91 (2.280)	53.34 (2.100)
23	• 70107-0022	60.45 (2.380)	55.88 (2.200)
24	• 70107-0023	62.99 (2.480)	58.42 (2.300)
25	• 70107-0024	65.53 (2.580)	60.96 (2.400)

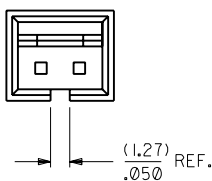
• US Standard Product, available through Molex franchised distributors

NOTES:

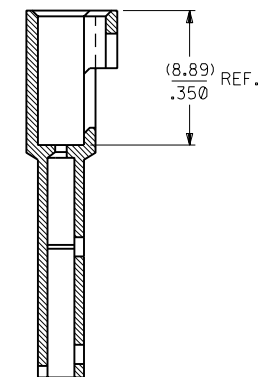
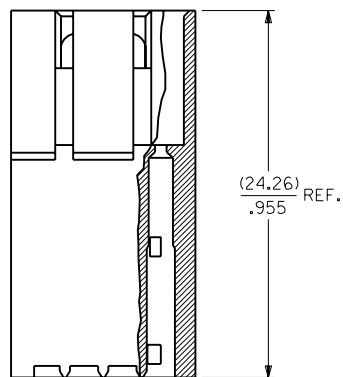
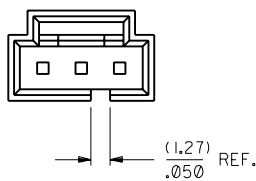
- 1) MATERIAL: GLASS FILLED POLYESTER, UL 94V-0
COLOR: BLACK
- 2) HOUSING TO BE USED WITH TERMINAL
PT. NO. 70021-****.
- 3) SEE CHART FOR CIRCUIT SIZES.
- 4) TO BE USED WITH 70400 SERIES
CONNECTORS (STYLE "G").
- 5) PACKAGE PER PK-70107-100.



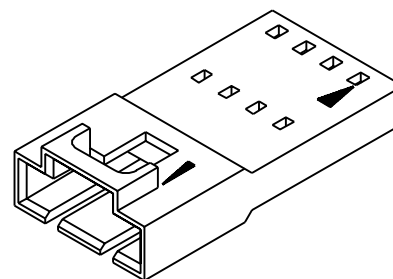
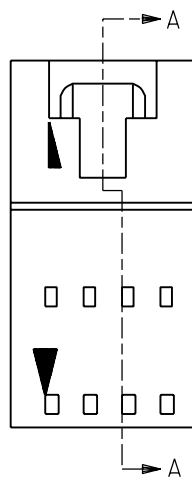
2 CIRCUIT



3 CIRCUIT



SECTION A-A



CKT. SIZE	EDP. NO.	ENG. NO.	A	B
2	701-07-0001	70107-0001	(7.11) .280	(2.54) .100
3	701-07-0002	70107-0002	(9.65) .380	(5.08) .200
4	701-07-0003	70107-0003	(12.19) .480	(7.62) .300
5	701-07-0004	70107-0004	(14.73) .580	(10.16) .400
6	701-07-0005	70107-0005	(17.27) .680	(12.70) .500
7	701-07-0006	70107-0006	(19.81) .780	(15.24) .600
8	701-07-0007	70107-0007	(22.35) .880	(17.78) .700
9	701-07-0008	70107-0008	(24.89) .980	(20.32) .800
10	701-07-0009	70107-0009	(27.43) 1.080	(22.86) .900
11	701-07-0010	70107-0010	(29.97) 1.180	(25.40) 1.000
12	701-07-0011	70107-0011	(32.51) 1.280	(27.94) 1.100
13	701-07-0012	70107-0012	(35.05) 1.380	(30.48) 1.200
14	701-07-0013	70107-0013	(37.59) 1.480	(33.02) 1.300
15	701-07-0014	70107-0014	(40.13) 1.580	(35.56) 1.400
16	701-07-0015	70107-0015	(42.67) 1.680	(38.10) 1.500
17	701-07-0016	70107-0016	(45.21) 1.780	(40.64) 1.600
18	701-07-0017	70107-0017	(47.75) 1.880	(43.18) 1.700
19	701-07-0018	70107-0018	(50.29) 1.980	(45.72) 1.800
20	701-07-0019	70107-0019	(52.83) 2.080	(48.26) 1.900
21	701-07-0020	70107-0020	(55.37) 2.180	(50.80) 2.000
22	701-07-0021	70107-0021	(57.91) 2.280	(53.34) 2.100
23	701-07-0022	70107-0022	(60.45) 2.380	(55.88) 2.200
24	701-07-0023	70107-0023	(62.99) 2.480	(58.42) 2.300
25	701-07-0024	70107-0024	(65.53) 2.580	(60.96) 2.400

H ADD PKG NOTE PER UDT2000-0468 SCHAFER 9/2/12/1		G REVISE PER ECR #181037 2/22/88 MJM		F REDRAWN ON CAD ADD SHEET 2 PER ECR #9280 8/21/86 MJM		DIMENSIONS SHOWN (METRIC) INCH UNLESS OTHERWISE SPECIFIED TOLERANCES: ANGULAR ± 1/2°		MFG, SH, REV.	
I I FIXED REV BLOCK I TO CORRECT ECR # PER UDT2002-0499 KSTILES 01/09/25		I CHANGED MATERIAL AND SWITCHED A AND B DIMS PER UDT2002-0007 KSTILES 01/07/17		DRAFT WHERE APPLICABLE MUST REMAIN WITHIN DIMENSIONS		5 PLACE ± .010 INCH --- METRIC 2 PLACE ± .014 ± 0.25 1 PLACE --- ± 0.35		REVISE ONLY ON CAD SYSTEM	
LTR. REVISIONS		LTR. REVISIONS		DRWG. NO. SD-70107-0001-0024 FILE NAME S70107X01.DWG APP'D. BY WAZ SCALE 4 : 1 CHK'D. BY MJM		TITLE HOUSING, CONNECTOR (2.54)/.100 GRID VERSION "A" W/O LATCHES		SHEET NO. 1 DATE 07/02/86 MOLEX INCORPORATED U.S.A. L1SLE,ILL. 60532	