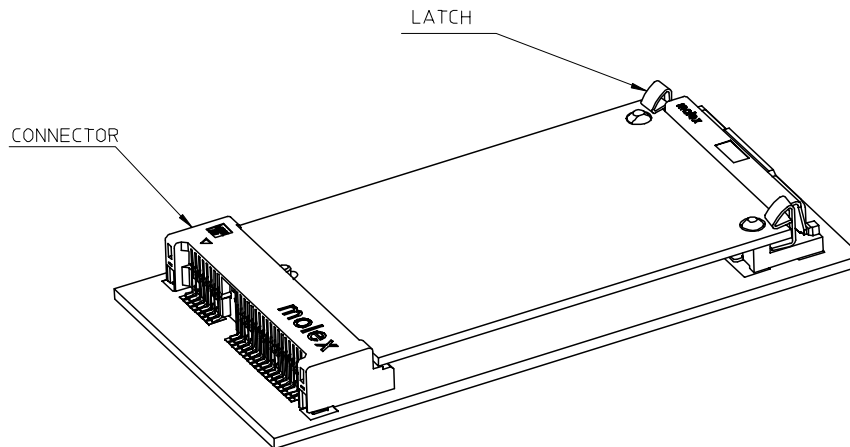
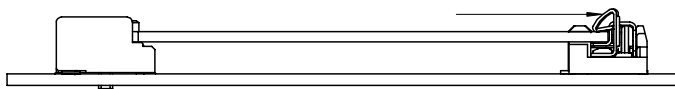


PUSH LATCH TO RELEASE MODULE



67910-6701	6.75	4.75	GOLD FLASH
67910-5701	5.75	3.75	
67910-5203	5.25	3.25	
67910-5201	5.25	3.25	10 MICROINCH GOLD
67910-6700	6.75	4.75	
67910-5700	5.75	3.75	
67910-5202	5.25	3.25	
67910-5200	5.25	3.25	CONTACT PLATING
P/N	DIMENSION	A	

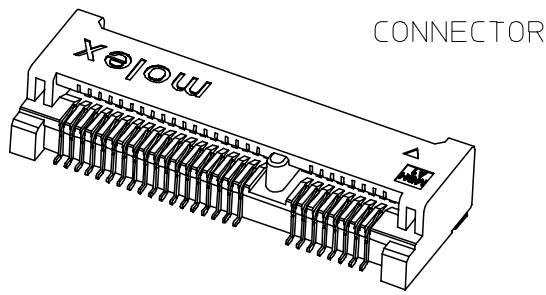
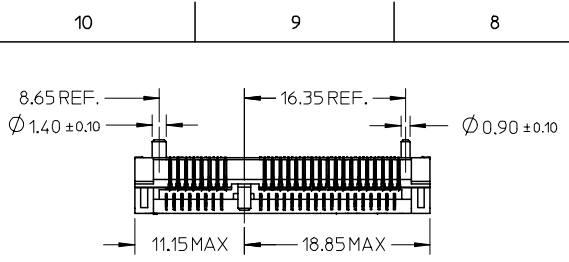
ADD P/N	DESCRIPTION
EC NO: SH2007-0648	
DRWN: DHU	
CHKD: HARVEY	
APPR: INCHEM	
REV	

QUALITY SYMBOLS	DESCRIPTION
▽=0	
▽=0	

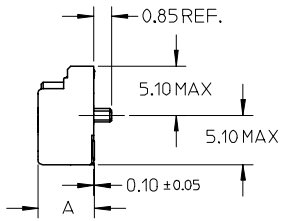
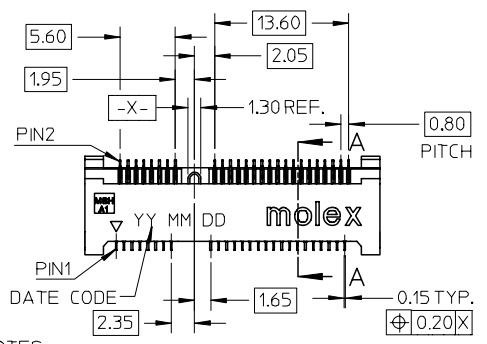
GENERAL TOLERANCES (UNLESS SPECIFIED)	mm	INCH
4 PLACES	± ---	± ---
3 PLACES	± ---	± ---
2 PLACES	± 0.25	± ---
1 PLACE	± 0.25	± ---
ANGULAR ± 3 °		
DRAFT WHERE APPLICABLE MUST REMAIN WITHIN DIMENSIONS		

DIMENSION STYLE		SCALE	DESIGN UNITS	THIRD ANGLE PROJECTION
MM ONLY		1:1	METRIC	
DRAWN BY	DATE	TITLE		
DAVID HU	2005/09/22	MINI PCI EXPRESS CONN. 0.8MM PITCH 52 CIRCUIT LEAD-FREE		
CHECKED BY	DATE	MOLEX INCORPORATED		
HARVEY	2005/10/26			
APPROVED BY	DATE	DOCUMENT NO.		
GARY	2005/10/26	SD-67910-004		
MATERIAL NO.		SHEET NO.		
SEE SHEET 1		1 OF 3		

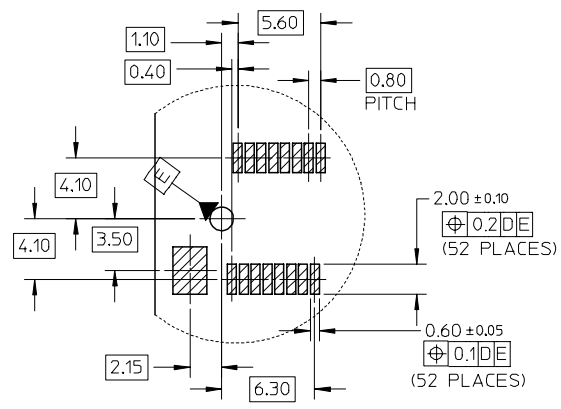
THIS DRAWING CONTAINS INFORMATION THAT IS PROPRIETARY TO MOLEX INCORPORATED AND SHOULD NOT BE USED WITHOUT WRITTEN PERMISSION			
---	--	--	--



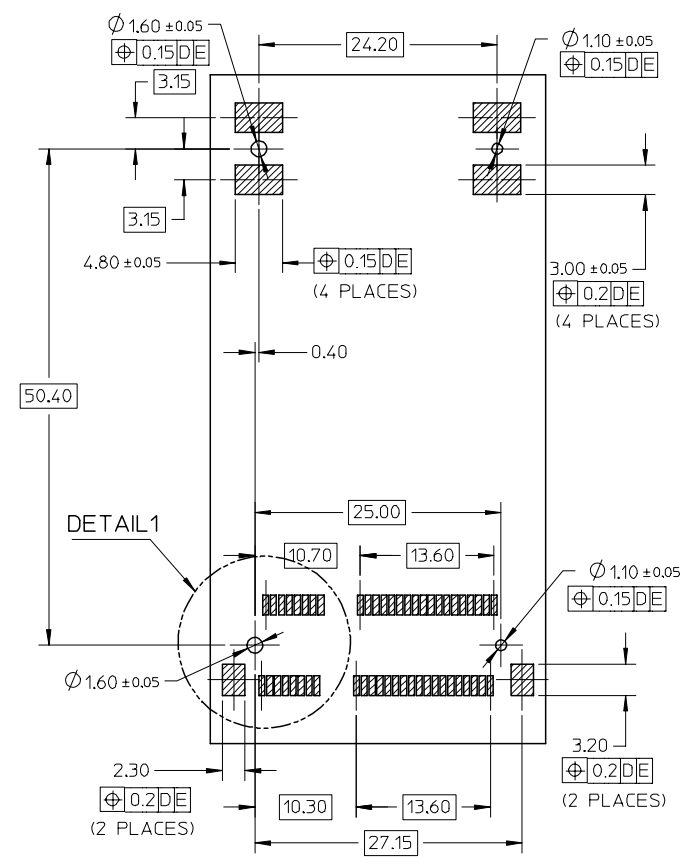
CONNECTOR



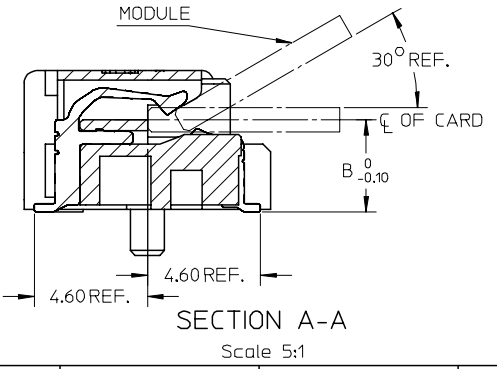
- NOTES:
1. MATERIALS: HOUSING: LCP COLOR: BLACK UL94V-0
CONTACT: PHOSPHOR BRONZE
NAIL: BRASS
 2. FINISH: CONTACT: SELECTIVE GOLD IN CONTACT AND SOLDER AREA
UNDERPLATED: NICKEL OVERALL
NAIL: TIN IN SOLDER AREA
UNDERPLATED: NICKEL OVERALL
 3. THE MODULE CARD REFERENCE MINIPCI-E CARD
ELECTROMECHANICAL SPECIFICATION
 4. DATUM D IS THE TOP OF SURFACE OF PCB
 5. MATCHED LATCH 48099**** SERIES.
 6. PART 67910**** COMPLIANT TO ROHS DIRECTIVE 2002/95/EC
AND ELV DIRECTIVE 2000/53/EC.



DETAIL 1
Scale 3:1

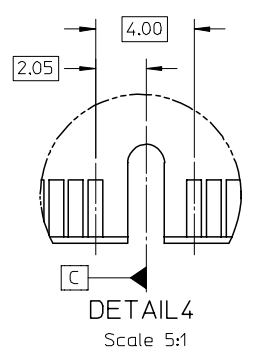
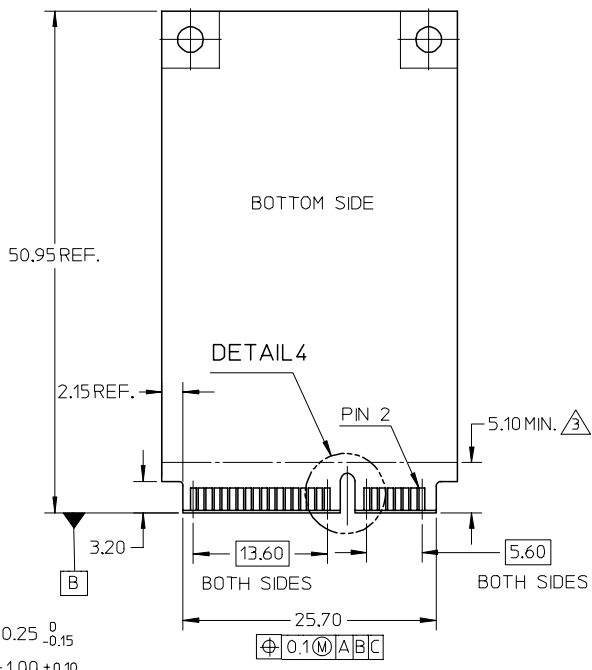
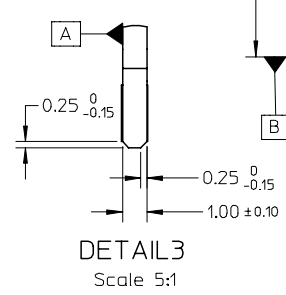
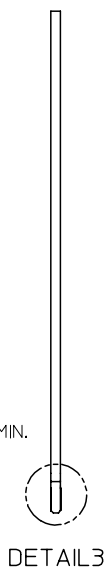
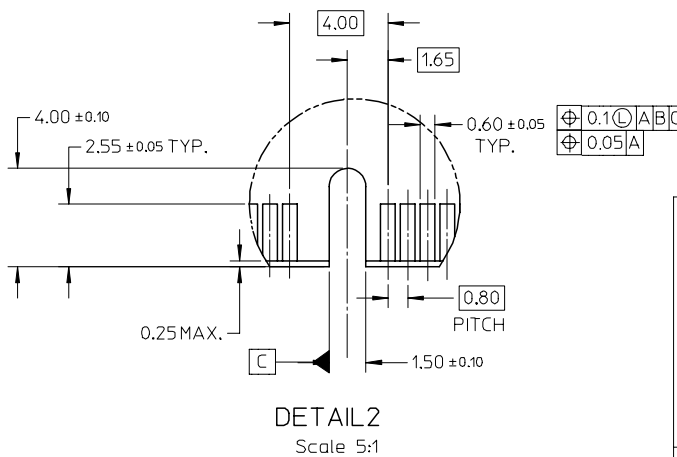
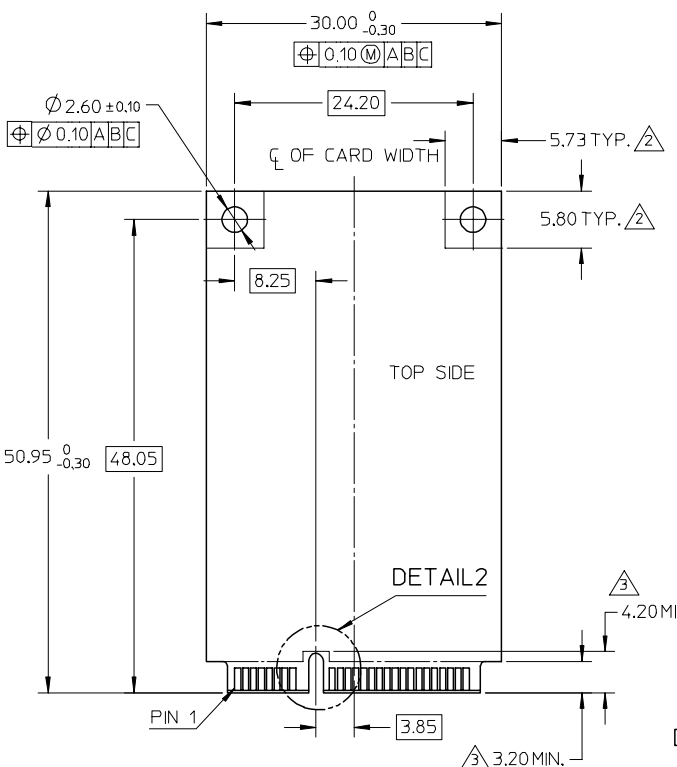


RECOMMENDED PCB LAYOUT



SECTION A-A
Scale 5:1

ADD P/N EC NO: SH2007-0648 DRWN: DHU CHK: HARVEY APPR: INCHEM 2007/03/14 2007/03/20 2007/04/11	QUALITY SYMBOLS ▽=0 ▽=0	GENERAL TOLERANCES (UNLESS SPECIFIED)		DIMENSION STYLE MM ONLY		SCALE 1:1	DESIGN UNITS METRIC	THIRD ANGLE PROJECTION	
						DRAWN BY DAVID HU		DATE 2005/09/22	
						CHECKED BY HARVEY		DATE 2005/10/26	
						APPROVED BY GARY		DATE 2005/10/26	
		ANGULAR ± 3°		MATERIAL NO.		DOCUMENT NO.		SHEET NO.	
DRAFT WHERE APPLICABLE MUST REMAIN WITHIN DIMENSIONS		SEE SHEET 1		SD-67910-004		MOLEX INCORPORATED		2 OF 3	
THIS DRAWING CONTAINS INFORMATION THAT IS PROPRIETARY TO MOLEX INCORPORATED AND SHOULD NOT BE USED WITHOUT WRITTEN PERMISSION									



NOTES;
 1. PIN NUMBERING REFERENCE:
 ODD PINS-TOP SIDE
 EVEN PINS-BOTTOM SIDE
 2. COMPONENT AND ROUTING(ALL LAYERS)
 KEEP OUT AREA FOR HOLD DOWN SOLUTIONS
 3. COMPONENT KEEP OUT AREA FOR CONNECTOR

ADD P/N EC NO: SH2007-0648 DRWN:DHU 2007/03/14 CHKD:HARVEY 2007/03/20 APPR: JNCHEH 2007/04/11	QUALITY SYMBOLS ▽=0 ∇=0	GENERAL TOLERANCES (UNLESS SPECIFIED)		DIMENSION STYLE MM ONLY	SCALE 1:1	DESIGN UNITS METRIC	THIRD ANGLE PROJECTION	
		4 PLACES ± --- ± ---	3 PLACES ± --- ± ---	2 PLACES ± 0.25 ± ---	1 PLACE ± 0.25 ± ---	ANGULAR ± 3 °	DRAWN BY DAVID HU 2005/09/22	DATE 2005/10/26
REV C	DESCRIPTION	DRAFT WHERE APPLICABLE MUST REMAIN WITHIN DIMENSIONS		APPROVED BY GARY 2005/10/26	MATERIAL NO. SD-67910-004		DOCUMENT NO. SD-67910-004	SHEET NO. 3 OF 3
		THIS DRAWING CONTAINS INFORMATION THAT IS PROPRIETARY TO MOLEX INCORPORATED AND SHOULD NOT BE USED WITHOUT WRITTEN PERMISSION						