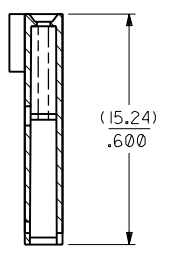
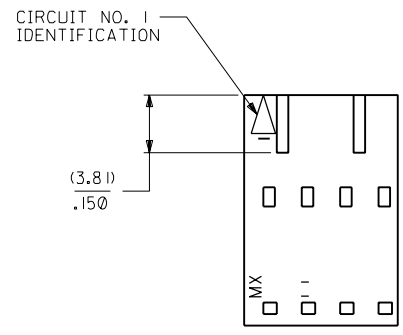
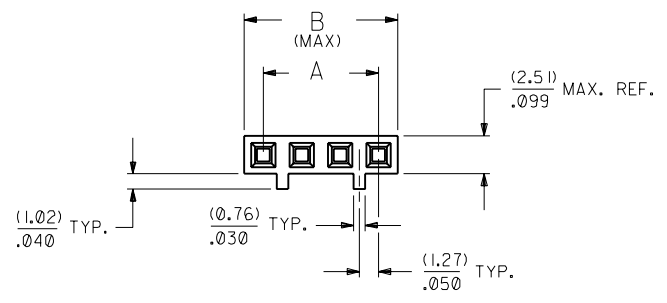


70066

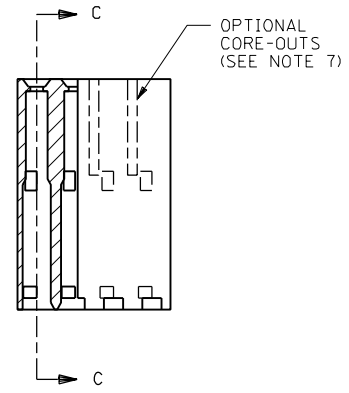
**NOTES:**

- 1) MATERIAL: G.F. POLYESTER
- 2) HOUSING TO BE USE WITH TERMINAL PT. NO. 70058-\*\*\*\*
- 3) SEE CHART FOR CIRCUIT SIZES.
- 4) TO BE USED WITH (0.64)/.025 SQ. OR RD. PINS.
- 5) PARTS STACKABLE END TO END ON (2.54)/.100 CENTERS.
- 6) REFER TO PRODUCT SPECIFICATION NO. : P.S.-70058
- 7) PARTS MAY OR MAY NOT BE SUPPLIED WITH EXTERIOR CORE-OUT CONFIGURATION. SEE DWG. SD-70066-\*\*\*\* FOR OPTIONAL HOUSING DETAILS.
- 8) PACKAGE PER PK-70066-100.

**OPTION "C"**



SECTION C-C



CKT. SIZE	EDP. NO.	ENG. NO.	A	B
2	50-57-9202	70066-0071	(2.54)/.100	(5.05)/.199
3	50-57-9203	70066-0072	(5.08)/.200	(7.59)/.299
4	50-57-9204	70066-0073	(7.62)/.300	(10.13)/.399
5	50-57-9205	70066-0074	(10.16)/.400	(12.67)/.499
6	50-57-9206	70066-0075	(12.70)/.500	(15.21)/.599
7	50-57-9207	70066-0076	(15.24)/.600	(17.75)/.699
8	50-57-9208	70066-0077	(17.78)/.700	(20.29)/.799
9	50-57-9209	70066-0078	(20.32)/.800	(22.83)/.899
10	50-57-9210	70066-0079	(22.86)/.900	(25.37)/.999
11	50-57-9211	70066-0080	(25.40)/1.000	(27.91)/1.099
12	50-57-9212	70066-0081	(27.94)/1.100	(30.45)/1.199
13	50-57-9213	70066-0082	(30.48)/1.200	(32.99)/1.299
14	50-57-9214	70066-0083	(33.02)/1.300	(35.53)/1.399
15	50-57-9215	70066-0084	(35.56)/1.400	(38.07)/1.499
16	50-57-9216	70066-0085	(38.10)/1.500	(40.61)/1.599
17	50-57-9217	70066-0086	(40.64)/1.600	(43.15)/1.699
18	50-57-9218	70066-0087	(43.18)/1.700	(45.69)/1.799
19	50-57-9219	70066-0088	(45.72)/1.800	(48.23)/1.899
20	50-57-9220	70066-0089	(48.26)/1.900	(50.77)/1.999
21	50-57-9221	70066-0090	(50.80)/2.000	(53.31)/2.099
22	50-57-9222	70066-0091	(53.34)/2.100	(55.85)/2.199
23	50-57-9223	70066-0092	(55.88)/2.200	(58.39)/2.299
24	50-57-9224	70066-0093	(58.42)/2.300	(60.93)/2.399
25	50-57-9225	70066-0094	(60.96)/2.400	(63.47)/2.499

REVISIONS LTR. REVISIONS LTR. REVISIONS		E REVISOR PER ECR# U10967 8-8-91 MJM/MGB D REVISOR PER ECR# U80051 3-27-89 MCB C REDRAWN ON CAD ECR # 9120 5/5/86 WZ		DIMENSIONS SHOWN (METRIC) INCH UNLESS OTHERWISE SPECIFIED TOLERANCES: ANGULAR ± 1/2° 3 PLACE ± .010 INCH --- METRIC 2 PLACE ± .014 ± 0.25 1 PLACE --- ± 0.35 DRAFT WHERE APPLICABLE MUST REMAIN WITHIN DIMENSIONS DRWG. NO. SD-70066-0071-0094 FILE NAME 700660071 THIS DRAWING CONTAINS INFORMATION THAT IS PROPRIETARY TO MOLEX INC. AND SHOULD NOT BE USED WITHOUT WRITTEN PERMISSION.		MFG. SH. REV. TITLE HOUSING CONNECTOR (2.54)/.100 GRID STACKABLE SINGLE ROW MOLEX INCORPORATED SHEET NO. 1 DATE 03/26/86 L1SLE,ILL. 60532 U.S.A. DIV. DA	
--------------------------------------------	--	----------------------------------------------------------------------------------------------------------------------------	--	----------------------------------------------------------------------------------------------------------------------------------------------------------------------------------------------------------------------------------------------------------------------------------------------------------------------------------------------------------------------------------------------------------------	--	----------------------------------------------------------------------------------------------------------------------------------------------------------------------	--



Print

Products

Search By:

Enter Molex Part No.

## More Information

- [70058](#)
- [70066c](#)
- [70553](#)

Products

New

Contact Us

About Us

Investors

Jobs

Languages

日本語  
한국어

English

Español

Français

Italiano

Deutsch

中文显示

日本語

한국어

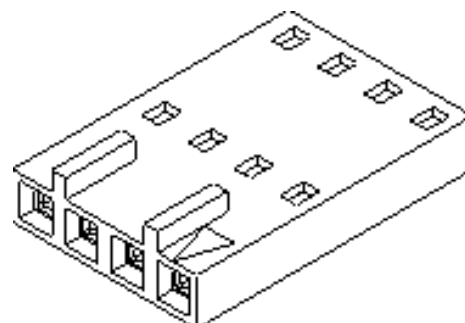
## Datasheet

## Wire-to-Board

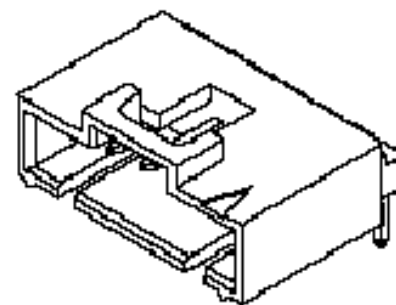
**2.54mm (.100") SL™ Single Row: Vertical Version C, Front Ribs Housing - Right Angle Shrouded .120" Pocket Header 70058,70066c:70553**
[ [Home](#) > [Products](#) > [Wire-to-Board](#) > Datasheet ][Help](#)

<a href="#">Wire Entry Angle</a>	Right Angle
<a href="#">Termination Method</a>	Crimp
<a href="#">Terminal Insulation Diameter</a>	1.63mm (.064")
<a href="#">Wire Size [AWG]</a>	22, 24, 26, 28, 30
<a href="#">Circuits</a>	2, 3, 4, 5, 6, 7, 8, 9, 10, 11, 12, 13, 14, 15, 16, 17, 18, 19, 20, 21, 22, 23, 24
<a href="#">Pitch [mm (inches)]</a>	2.54mm (.100")
<a href="#">Rows</a>	1
<a href="#">Lock to Mating Part</a>	None
<a href="#">Polarized to Mating Part</a>	Yes, No
<a href="#">PCB Mounting</a>	Through Hole
<a href="#">Polarized to PCB</a>	No
<a href="#">PCB Retention</a>	None
<a href="#">PCB Thickness</a>	1.60mm (.063")
<a href="#">Staggered Tails</a>	No
<a href="#">Surface Mount Compatible (SMC)</a>	Yes
<a href="#">Shrouded</a>	Yes
<a href="#">Breakaway</a>	No
Pin Header	Yes
Pin Size	0.64mm (.025") Square
<a href="#">Termination</a>	<a href="#">Good Crimps</a>
<a href="#">Designed In</a>	Inches
Temperature Range	-40°C to +105°C
<a href="#">Plating Contact</a>	Gold (Au), Tin/Lead (Sn/Pb)
<a href="#">Durability (cycles)</a>	25 Tin (Sn); 50 Gold (Au)
<a href="#">Current-max [amps]</a>	3.0A
<a href="#">Voltage-max [volts]</a>	250V

## Part Detail

Female Terminal 70058 [ [Part Detail](#) ]

Female Housing 70066c



Male Header 70553

## Features and Benefits

- Sizes 2 to 25 circuits

## Terminal:

- Choice of 2 terminals: **Standard Female Box Crimp 70058** and **Female High Force Box Crimp 71851**

FORCES	70058	71851
<b>Contact Insertion</b>	1.4N (.32 lbs) Sn 1.5N (.34 lbs) Au	6.4N (1.44 lbs) Sn 4.09N (0.92 lbs) Au
<b>Contact Retention to Housing</b>	17.79N (4.0 lbs)	17.79N (4.0 lbs)
<b>Wire Pull-Out</b>	17.79N (4.0 lbs)	17.79N (4.0 lbs)

<a href="#">Contact Resistance [ohms]</a>	<b>15 milliohms max.</b>
<a href="#">Withstanding Voltage</a>	<b>600V AC</b>
<a href="#">Insulation Resistance [ohms]</a>	<b>1000 Megohms min.</b>
Contact Insertion Force-max. (per circuit)	<b>1.5N (0.34 lb) Au, 1.4N (0.32 lb) Sn</b>
Contact Retention Force-min. (per circuit)	<b>18.0N (4.05 lb)</b>
<a href="#">Wire Pull-Out Force-min. (per circuit)</a>	<b>17.79N (4.00 lb)</b>
<a href="#">Mating Force-max. (per circuit)</a>	<b>2.0N (0.45 lb)</b>
<a href="#">Normal Force-min. (per circuit)</a>	<b>1.0N (0.22 lb)</b>
Unmating Force-min. (per circuit)	<b>0.3N (0.07 lb)</b>
<a href="#">Terminal Product Specification</a>	<b>PS-70058</b>
<a href="#">Terminal Packaging</a>	<b>Bag, Reel</b>
<a href="#">Terminal Contact</a>	<b>Phosphor Bronze</b>
<a href="#">Housing - Product Specification</a>	<b>PS-70058</b>
<a href="#">Housing - Packaging</a>	<b>Bag, Reel</b>
<a href="#">Housing - UL File No.</a>	<b>E29179</b>
<a href="#">Housing - CSA File No.</a>	<b>LR19980</b>
<a href="#">Housing - Flammability</a>	<b>UL 94V-0</b>
<a href="#">Housing - Material</a>	<b>Polyester, Glass-filled, Black</b>
<a href="#">Housing - Stackable End-to-End</a>	<b>Yes</b>
<a href="#">Header - Product Specification</a>	<b>PS-70541</b>
<a href="#">Header - Packaging</a>	<b>Tube</b>
<a href="#">Header - UL File No.</a>	<b>E29179</b>
<a href="#">Header - CSA File No.</a>	<b>LR19980</b>
<a href="#">Header - Housing Material</a>	<b>PCT Polyester, Glass-filled, Black</b>

<b>Mating</b>	2N (0.4 lbs)	8.89N (2.0 lbs)
<b>Unmating</b>	0.3N (0.07 lbs)	1.11N (0.25 lbs)
<b>Normal</b>	1N (0.2 lbs)	1.96N (0.44 lbs)

- 71851 for use with low current/ high vibration applications in small circuit sizes
- Dual beam, fully enclosed box contact
- Dual tab strain relief
- Locking tang secures terminal in housing
- Mating Pin Length: 5.08mm (.200") min. (measured from top of housing/PCB to top of pin) 8.13mm (.320") max.

#### Housing:

- Front ribs prevent contact damage when unmating the connector from a header; the housing cannot be twisted off pins
- Front ribs provide 180 degrees polarization

#### Header:

- Sizes 2 to 25 circuits
- Locking crown secures positive latch to header
- Polarization slots guide front ribs of mating connector to prevent pin damage
- Standoffs minimize flux retention
- Vapor phase and IR process compatible

<a href="#">Header - Flammability</a>	<b>UL 94V-0</b>
<a href="#">Header - Contact</a>	<b>Phosphor Bronze</b>
<a href="#">Header - Stackable Side-to-Side</a>	<b>No</b>
<a href="#">Header - Stackable End-to-End</a>	<b>No</b>
<a href="#">Product Name</a>	<b>SL™</b>

[ © Copyright 2001 Molex Incorporated ]