

PLEASE CHECK WWW.MOLEX.COM FOR LATEST PART INFORMATION

Part Number: [5600200330](#)
Status: **Active**
Overview: [DuraClik Connector System](#)
Description: DuraClik Wire-to-Board Header, Single Row, Vertical, 3 Circuits, Gold (Au) Over Nickel, Natural

Documents:

3D Model	Product Specification PS-502351-002-001 (PDF)
Drawing (PDF)	Packaging Specification PK-560020-002-JP-001 (PDF)
3D Model (PDF)	Datasheet (PDF)
Product Specification 5051510002-000 (PDF)	RoHS Certificate of Compliance (PDF)

Agency Certification

UL E29179

General

Product Family PCB Headers
 Series [560020](#)
 Application Automotive, Signal, Wire-to-Board
 Comments The Operating Temperature Range when used with DuraClik series 502351 is -40°C to +105°C. It is -40°C to 125°C when used with DuraClik ISL series 560123 or TPA series 505151.

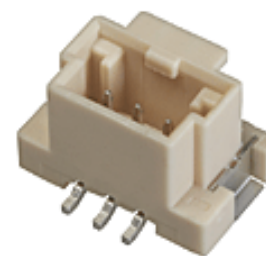
Overview [DuraClik Connector System](#)
 Product Name DuraClik
 UPC 887191750798

Physical

Breakaway No
 Circuits (Loaded) 3
 Circuits (maximum) 3
 Color - Resin Natural
 Durability (mating cycles max) 30
 First Mate / Last Break No
 Flammability SC-0
 Glow-Wire Capable No
 Keying to Mating Part None
 Lock to Mating Part Yes
 Material - Metal Copper Alloy
 Material - Plating Mating Gold
 Material - Resin Polyamide
 Net Weight 0.578/g
 Number of Rows 1
 Orientation Vertical
 PCB Locator No
 PCB Retention Yes
 Packaging Type Embossed Tape on Reel
 Pitch - Mating Interface 2.00mm
 Polarized to Mating Part Yes
 Polarized to PCB Yes
 Stackable No
 Temperature Range - Operating -40° to +105°C, -40° to +125°C
 Termination Interface: Style Surface Mount

Electrical

Current - Maximum per Contact 3.0A



Series image - Reference only

**EU ELV
Compliant**

**EU RoHS
Compliant**

China RoHS

REACH SVHC

Not Contained Per -
D(2020)4578-DC (25
June 2020)

**Halogen-Free
Status**

Not Low-Halogen

For more information, please visit [Contact US](#)

China ROHS

Green Image

ELV

Compliant

RoHS Phthalates

Not Contained

Search Parts in this Series

[560020](#) Series

Mates With

DuraClik Crimp Housings [502351](#) , [560123](#) , [505151](#)

Voltage - Maximum

125V AC (RMS)/DC

Material Info

Reference - Drawing Numbers

Packaging Specification

PK-560020-002-JP-001

Product Specification

5051510002-000, PS-502351-002-001

Sales Drawing

SD-560020-001-001, SD-560020-003-001

This document was generated on 07/17/2020

PLEASE CHECK WWW.MOLEX.COM FOR LATEST PART INFORMATION