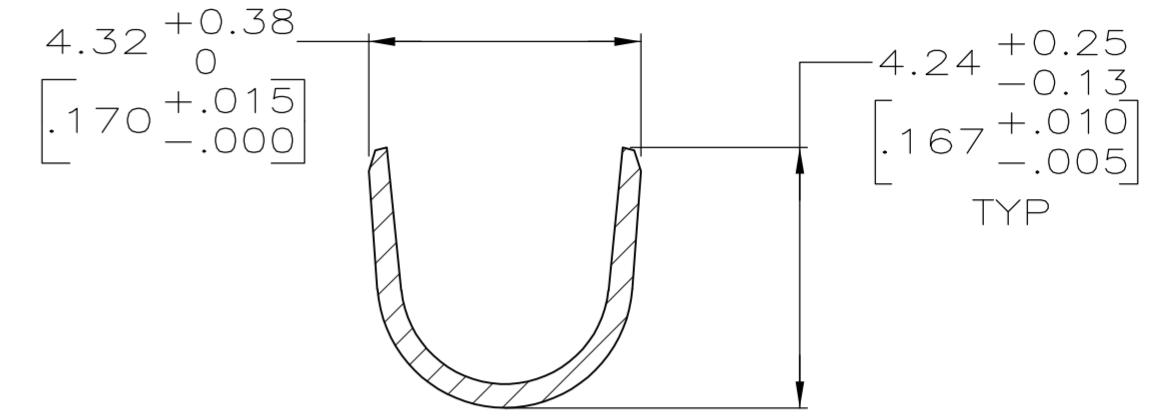
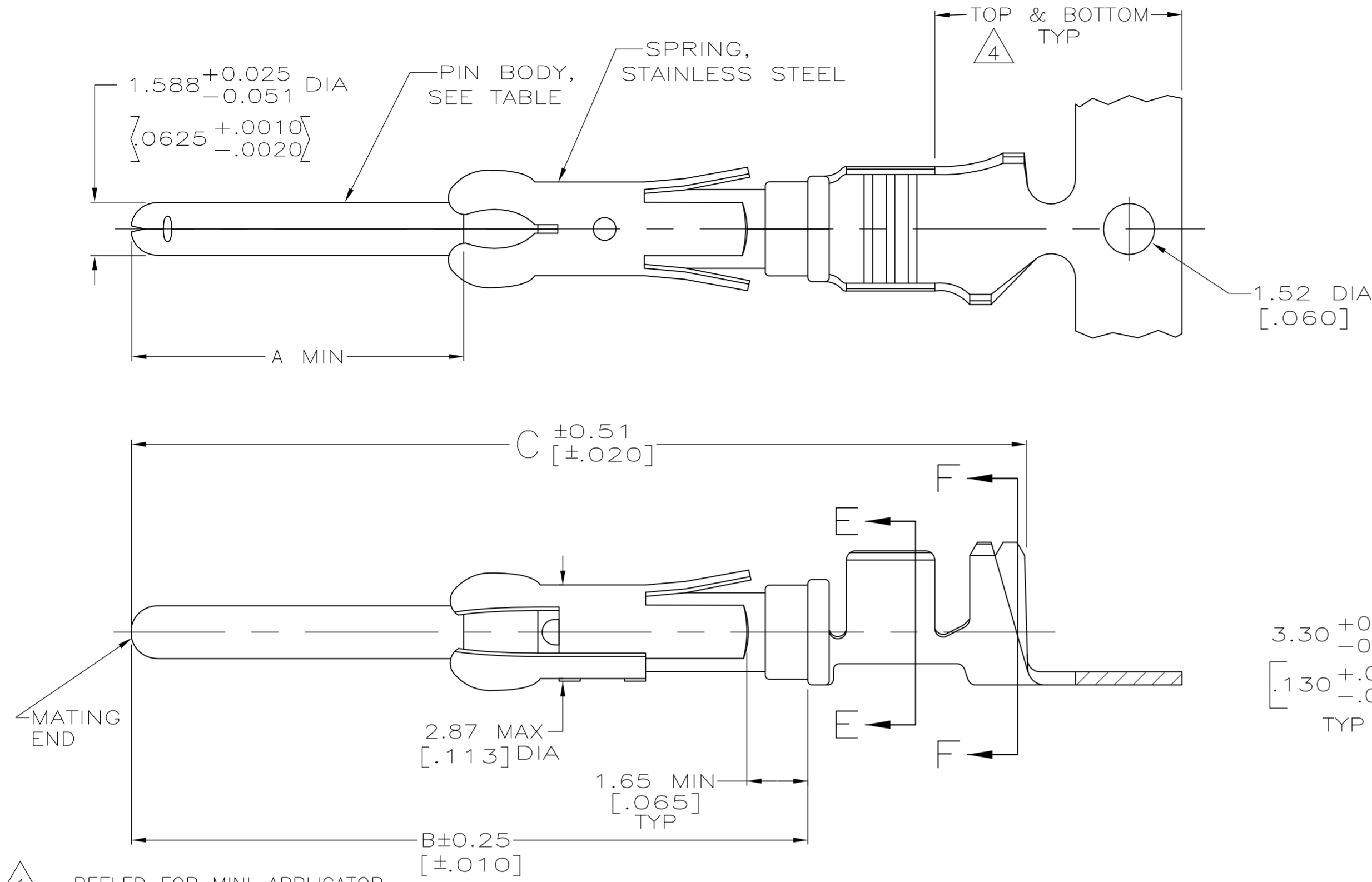
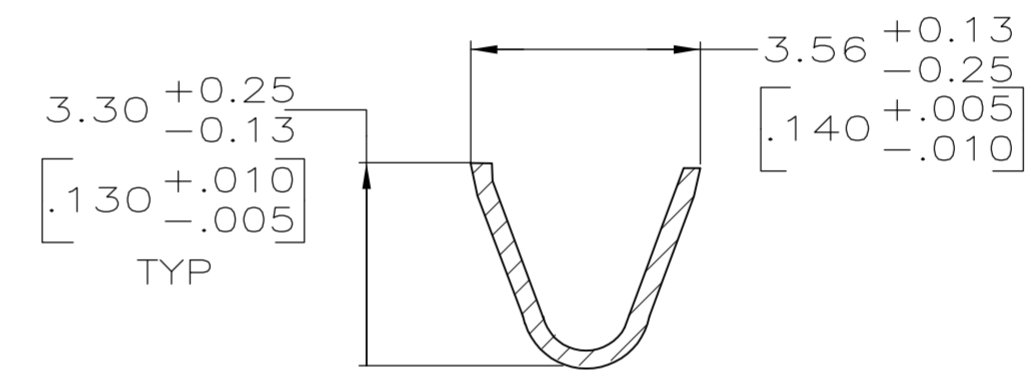


THIS DRAWING IS UNPUBLISHED. RELEASED FOR PUBLICATION
 © COPYRIGHT BY TYCO ELECTRONICS CORPORATION. ALL INTERNATIONAL RIGHTS RESERVED.

LOC	DIST	REVISIONS					
FT	0	P	LTR	DESCRIPTION	DATE	DWN	APVD
		U1		REVISED PER ECO-08-017797	22JUL08	HMR	GS



SECTION F-F



SECTION E-E

- 1 REELED FOR MINI-APPLICATOR.
- 2 0.76μm [.000030] MIN GOLD PER MIL-G-45204 ON MATING END FOR A LENGTH OF 5.08 [.200] MIN WITH GOLD FLASH ON THE REMAINDER, OVER 1.27μm [.000050] MIN NICKEL PER QQ-N-290.
- 3 1.27μm [.000050] MIN TIN-LEAD PER MIL-T-10727 OVER 1.27μm [.000050] MIN NICKEL PER QQ-N-290.
- 4 GOLD PLATING NEED NOT APPEAR IN THIS AREA.
- 5 BRASS
- 6 PHOSPHOR BRONZE
- 7 WIRE RANGE 14-18 AWG.
- 8 INSULATION RANGE 2.79[.110]-3.81[.150] DIA.
- 9 0.38μm [.000015] MIN GOLD PER MIL-G-45204 ON MATING END FOR A LENGTH OF 5.08 [.200] MIN, 1.27 μm [.000050] MIN TIN-LEAD PER MIL-T-10727 FOR A LENGTH OF 5.69 [.224] MIN ON OPPOSITE END, BOTH OVER 1.27μm [.000050] MIN NICKEL PER QQ-N-290 ON ENTIRE CONTACT.
- 10 OBSOLETE PART NUMBER.
- 11 1.27μm [.000050] MIN TIN PER MIL-T-10727 OVER 1.27μm [.000050] MIN NICKEL PER Q-N-290.
- 12 COPPER NICKEL ALLOY.
- 13 0.38μm [.000015] MIN GOLD PER MIL-G-45204 ON MATING END FOR A LENGTH OF 5.08 [.200] MIN. WITH GOLD FLASH ON THE REMAINDER, OVER 1.27μm [.000050] MIN NICKEL PER QQ-N-290.
- 14 PRELIMINARY - NOT FOR PRODUCTION.

26.75[1.053]	20.24[.797]	9.91[.390]	1	13	12	-	14	1-66597-2
26.75[1.053]	20.24[.797]	9.91[.390]	1	11	12	1-66602-0	-	1-66597-1
26.75[1.053]	20.24[.797]	9.91[.390]	1	2	12	66602-9	-	1-66597-0
26.75[1.053]	20.24[.797]	9.91[.390]	1	11	6	-	-	66597-9
26.75[1.053]	20.24[.797]	9.91[.390]	1	11	5	66602-8	-	66597-8
26.75[1.053]	20.24[.797]	9.91[.390]	1	9	5	66602-5	-	66597-7
30.43[1.198]	23.93[.942]	13.59[.535]	1	3	5	-	-	66597-6
26.75[1.053]	20.24[.797]	9.91[.390]	1	2	6	66602-4	-	66597-5
26.75[1.053]	20.24[.797]	9.91[.390]	1	3	6	66602-3	-	66597-4
26.75[1.053]	20.24[.797]	9.91[.390]	1	2	5	66602-2	-	66597-2
26.75[1.053]	20.24[.797]	9.91[.390]	1	3	5	66602-1	-	66597-1
C	B	A	REELING	PIN BODY FINISH	PIN BODY	LOOSE PIECE REF		PART NO

THIS DRAWING IS A CONTROLLED DOCUMENT.

DIMENSIONS: INCHES	TOLERANCES UNLESS OTHERWISE SPECIFIED:	DWN R. SHIREY 7-22-91	Tyco Electronics Corporation Harrisburg, PA 17105-3608
	0 PLC ± -	CHK R. STONE 8-15-91	
	1 PLC ± -	APVD J. WESTMAN 8-19-91	
	2 PLC ± 0.13[.005]	NAME	
MATERIAL SEE CALLOUTS	FINISH SEE TABLE	PRODUCT SPEC	SIZE CAGE CODE DRAWING NO RESTRICTED TO
		APPLICATION SPEC	A2 00779 C=66597
		WEIGHT	SCALE 8:1 SHEET 1 of 1 REV U1
		CUSTOMER DRAWING	