

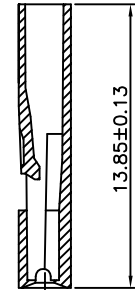
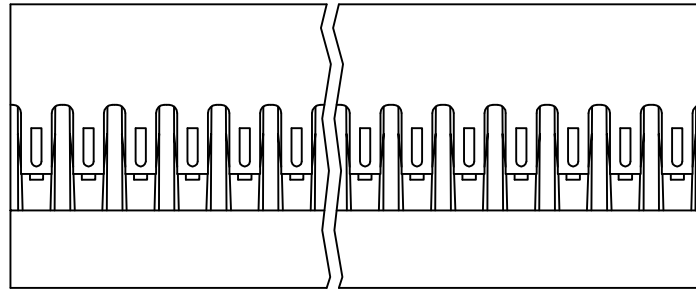
PRODUCT NUMBER
65039-YXX(E)LF

DESIGN CODE
0 = STANDARD
2 = OPTIONAL RIB
SEE SHEET 2

PIN STYLE
SEE SHEET 2

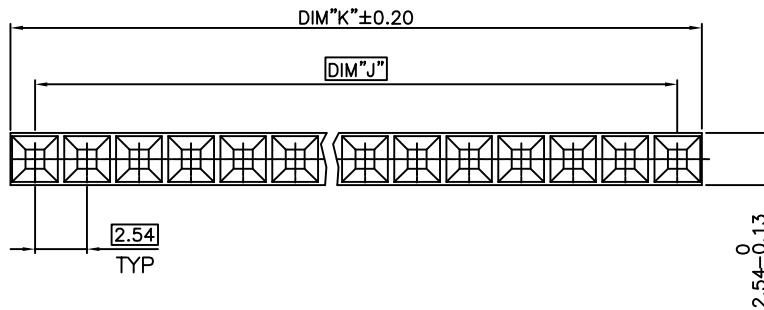
INDICATES THE PRODUCT IS RoHS
COMPLIANT, SEE NOTE 6

65039-YXXLF OR 65039-YXXELF ARE
EXACTLY THE SAME PRODUCTS.
EXTENSION "E" JUST FOR OLD EUROPEAN
DESIGN AND MANUFACTURING SITE



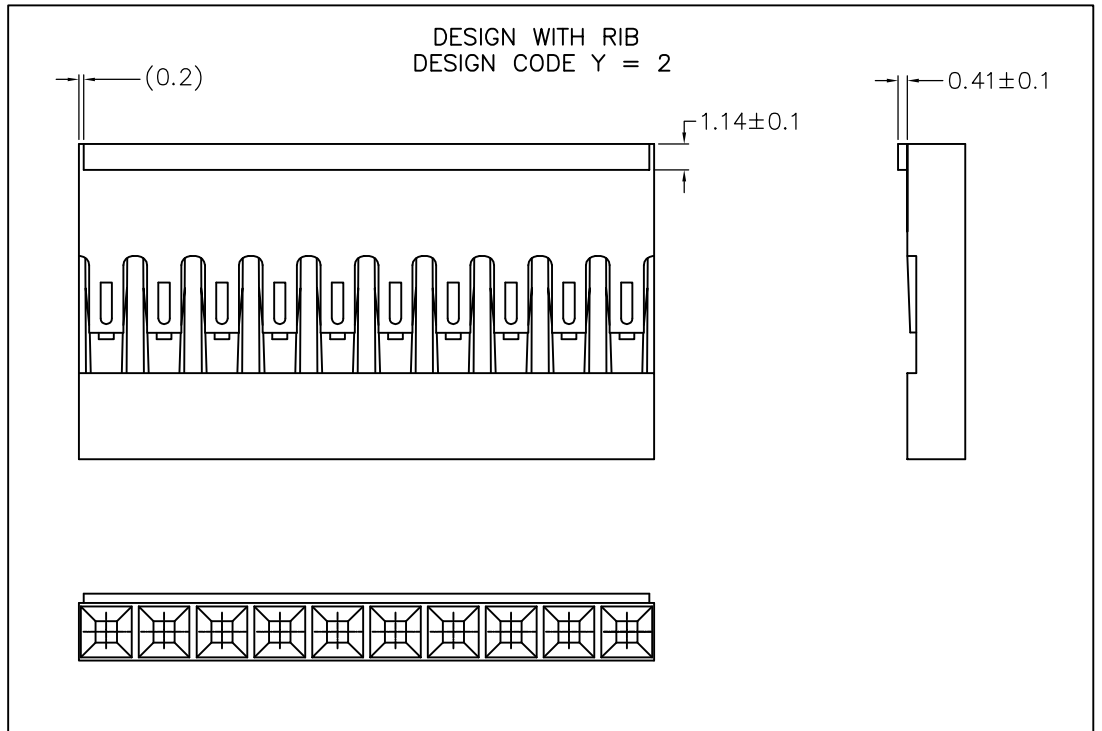
NOTES:

- MOLDING MATERIAL : MODIFIED POLYPHELYNENE
COLOR BLACK, UL 94 V0
- LATCH MUST WITHSTAND 18N MIN PULL OUT FORCE
- STANDARD PACKAGING IN POLYBAGS
- TERMINALS MUST BE CRIMPED PROPERLY FOR
SATISFACTORY LATCHING :
- FOR CRIMPING INSTRUCTIONS, SEE TA-75 AND TA-295
- FOR TERMINAL APPLICATION SEE TA-531.
PRODUCT SPECIFICATION: BUS-12-067.
- THIS HOUSING IS INTENDED FOR USE WITH
MINI PV TERMINAL WITH 22-36 GAUGE WIRE
- RoHS COMPLIANT PRODUCT SPECIFICATIONS :
- MEETS PACKAGING SPECS AS PER GS-14-920
- PRODUCT MEETS EUROPEAN UNION DIRECTIVES
AND OTHER COUNTRY REGULATIONS AS
DESCRIBED IN GS-22-008.
- THE PRODUCT IS NOT INTENDED TO BE EXPOSED
TO A MANUFACTURING SOLDER PROCESS.



| | | | | | |
|--------------------------|----------------|---------------------|-------------------------------|---------------------------------------|---------------------------------------|
| mat'l. code SEE NOTES | | surface ISO 1302 | tolerance ISO 406 ISO 1101 | projection mm | product family BERCONN |
| ltr | ecn no | dr | date | tolerances unless otherwise specified | title |
| BE | V07-0483 | HTB | 07.07.24 | angles .X ±0.3 | MINI LATCH SR POLARIZED HSG 2.54mm |
| BF | F12-0064 | LMU | 12.06.08 | linear .XX ±0.13 | |
| BG | B-14321 | LMU | 13.03.21 | .XXX ±0.05 | |
| | | dr | L.MULIN | 12.06.08 | scale 5:1 |
| | | enr | L.MULIN | 12.06.08 | FCJ |
| | | chr | | | |
| | | appd | JCO | 12.06.08 | |
| sheet index | revision sheet | BG | BF | | dwg no 65039 |
| | 1 | 2 | | | sheet 1 of 2 |
| | | | | | size A3 |
| | | | | | type CUSTOMER Drawing |

| PIN STYLE | No. OF POS. | DIM J | DIM K |
|-----------|-------------|-------|-------|
| 35 | 1x02 | 2.54 | 4.93 |
| 34 | 1x03 | 5.08 | 7.47 |
| 33 | 1x04 | 7.62 | 10.01 |
| 32 | 1x05 | 10.16 | 12.55 |
| 31 | 1x06 | 12.70 | 15.09 |
| 30 | 1x07 | 15.24 | 17.63 |
| 29 | 1x08 | 17.78 | 20.17 |
| 28 | 1x09 | 20.32 | 22.71 |
| 27 | 1x10 | 22.86 | 25.25 |
| 26 | 1x11 | 25.40 | 27.79 |
| 25 | 1x12 | 27.94 | 30.33 |
| 24 | 1x13 | 30.48 | 32.87 |
| 23 | 1x14 | 33.02 | 35.41 |
| 22 | 1x15 | 35.56 | 37.95 |
| 21 | 1x16 | 38.10 | 40.49 |
| 20 | 1x17 | 40.64 | 43.03 |
| 19 | 1x18 | 43.18 | 45.57 |
| 18 | 1x19 | 45.72 | 48.11 |
| 17 | 1x20 | 48.26 | 50.65 |
| 16 | 1x21 | 50.80 | 53.19 |
| 15 | 1x22 | 53.34 | 55.73 |
| 14 | 1x23 | 55.88 | 58.27 |
| 13 | 1x24 | 58.42 | 60.81 |
| 12 | 1x25 | 60.96 | 63.35 |
| 11 | 1x26 | 63.50 | 65.89 |
| 10 | 1x27 | 66.04 | 68.43 |
| 09 | 1x28 | 68.58 | 70.97 |
| 08 | 1x29 | 71.12 | 73.51 |
| 07 | 1x30 | 73.66 | 76.05 |
| 06 | 1x31 | 76.20 | 78.59 |
| 05 | 1x32 | 78.74 | 81.13 |
| 04 | 1x33 | 81.28 | 83.67 |
| 03 | 1x34 | 83.82 | 86.21 |
| 02 | 1x35 | 86.36 | 88.75 |
| 01 | 1x36 | 88.90 | 91.29 |



FCIconnect.com

Copyright FCI

| | | | | | |
|-------------|----------|---------------------------------------|------------------|----------------------|----------------|
| mat'l. code | | surface | tolerance | projection | product family |
| | | ISO 1302 | ISO 406 ISO 1101 | | BERCONN |
| ltr | | tolerances unless otherwise specified | | title | |
| ecn no | dr | date | | MINI LATCH SR | |
| BE 07-0483 | HTB | 07.07.24 | | POLARIZED HSG 2.54mm | |
| BF 12-0064 | LMU | 12.06.08 | | scale 5:1 | |
| | | angles | .X ±0.3 | dwg no | |
| | | linear | .XX ±0.13 | sheet 2 of | |
| | | | .XXX ±0.05 | size | |
| | | dr | L.MULIN 12.06.08 | A3 | |
| | | enr | L.MULIN 12.06.08 | 65039 | |
| | | chr | | type | |
| | | appd | JCO 12.06.08 | CUSTOMER Drawing | |
| sheet | revision | | | | |
| index | sheet | | | | |