

## MTA-100 Connectors and Headers

### MTA-100 IDC Connectors — Closed End

#### Material and Finish

**Housing** — UL94V-2 rated, type 6/6 nylon, see below for color, or UL94V-0 rated, nylon, black

**Contacts** — Phosphor bronze, post tin plated, .000030 [0.00076] or .000015 [0.00038] post gold-plated over nickel

UL94V-2 Color Coding by Wire Size:

- 28 AWG - Green
- 26 AWG - Blue
- 24 AWG - White
- 22 AWG - Red

UL94V-0 — Black

## Printed Circuit Board Connectors (Continued)

### Base Part Numbers

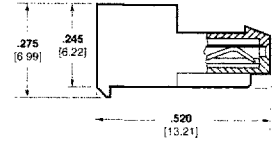
Connector Type & Wire Size	Closed End	
	Without Tabs	With Tabs
<b>Standard UL94V-2, Tin Plated</b>		
22 AWG 0.3-0.4mm <sup>2</sup>	640440 <sup>1</sup>	643813 <sup>2</sup>
24 AWG 0.2mm <sup>2</sup>	640441	643814
26 AWG 0.12-0.15mm <sup>2</sup>	640442 <sup>3</sup>	643815 <sup>1</sup>
28 AWG 0.08-0.09mm <sup>2</sup>	640443	643816 <sup>3</sup>

<sup>1</sup>Part No. 1--1 not available. <sup>2</sup>Part No. 1--3 not available.  
<sup>3</sup>Part Nos. -4, -7, -8, -9, 1-0, 1-1, 1-2, 1-3, 1-4 not available.

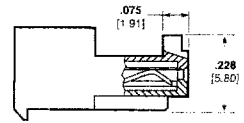
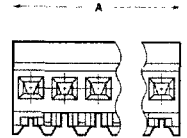
### Connector Length

No. of Circuits	Dim. A	Prefix/Suffix
2	.200 [5.08]	-2
3	.300 [7.62]	-3
4	.400 [10.16]	-4
5	.500 [12.7]	-5
6	.600 [15.24]	-6
7	.700 [17.78]	-7
8	.800 [20.32]	-8
9	.900 [22.86]	-9
10	1.00 [25.4]	1--0
11	1.100 [27.94]	1--1
12	1.200 [30.48]	1--2
13	1.300 [33.02]	1--3
14	1.400 [35.56]	1--4

For the purposes of this catalog, only position sizes 2 through 14 are listed. For complete product offering, see catalog #82056.



Without Polarizing Tabs



With Polarizing Tabs

### MTA-100 IDC Connector Accessories — Covers

#### Material and Finish

**Strain Relief Cover** — UL94V-2 rated, nylon, white

**Dust Covers** — UL94V-0 rated, polyester, white

### Base Part Numbers

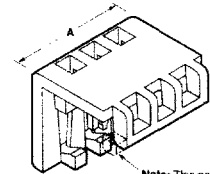
No. of Circuits	Closed End	
	Strain Relief Covers	Dust Covers
2-28	643075*	640550*

### Cover Length

No. of Circuits	Dim. A	Prefix/Suffix
2	.200 [5.08]	-2*
3	.300 [7.62]	-3*
4	.400 [10.16]	-4*
5	.500 [12.7]	-5*
6	.600 [15.24]	-6*
7	.700 [17.78]	-7*
8	.800 [20.32]	-8*
9	.900 [22.86]	-9*
10	1.00 [25.4]	1--0*
11	1.100 [27.94]	1--1
12	1.200 [30.48]	1--2*
13	1.300 [33.02]	1--3
14	1.400 [35.56]	1--4*

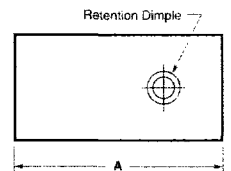
\*2D geometry and 3D CAD model are included on CD-ROM.  
\*643075-2 only

For the purposes of this catalog, only position sizes 2 through 14 are listed. For complete product offering, see catalog #82056.



Note: This portion of the front locking bar may or may not be present.

Closed End Strain Relief Covers



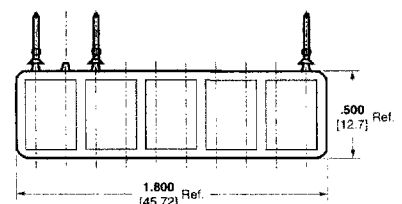
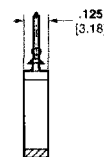
Closed End Dust Covers

### MTA-100 IDC Connector Accessories — Keying Plug with Carrier Strip

#### Material and Finish

UL94V-2 rated, type 6/6 nylon, natural color

### Part No. 641944-1 (10 plugs per strip)



For Complete Product Information, Order Catalog 82056