

PLEASE CHECK WWW.MOLEX.COM FOR LATEST PART INFORMATION

Part Number: [5600200420](#)
Status: **Active**
Overview: [DuraClik Connector System](#)
Description: DuraClik Wire-to-Board Header, Single Row, Vertical, 4 Circuits, Tin (Sn) Over Nickel, Natural

Documents:

3D Model	Packaging Specification PK-560020-002-JP-001 (PDF)
Drawing (PDF)	Datasheet (PDF)
3D Model (PDF)	RoHS Certificate of Compliance (PDF)
Product Specification PS-502351-001-001 (PDF)	

Agency Certification

UL E29179

General

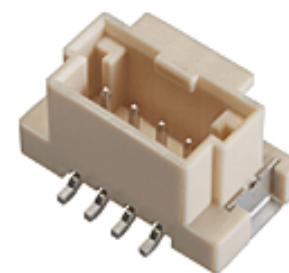
Product Family	PCB Headers
Series	560020
Application	Automotive, Signal, Wire-to-Board
Comments	The Operating Temperature Range when used with DuraClik series 502351 is -40°C to +105°C. It is -40°C to 125°C when used with DuraClik ISL series 560123 or TPA series 505151.
Overview	DuraClik Connector System
Product Name	DuraClik
UPC	887191747101

Physical

Breakaway	No
Circuits (Loaded)	4
Circuits (maximum)	4
Color - Resin	Natural
Durability (mating cycles max)	30
First Mate / Last Break	No
Flammability	SC-0
Glow-Wire Capable	No
Keying to Mating Part	None
Lock to Mating Part	Yes
Material - Metal	Copper Alloy
Material - Plating Mating	Tin
Material - Resin	Polyamide
Net Weight	0.674/g
Number of Rows	1
Orientation	Vertical
PCB Locator	No
PCB Retention	Yes
Packaging Type	Embossed Tape on Reel
Pitch - Mating Interface	2.00mm
Polarized to Mating Part	Yes
Polarized to PCB	Yes
Stackable	No
Temperature Range - Operating	-40° to +105°C, -40° to +125°C
Termination Interface: Style	Surface Mount

Electrical

Current - Maximum per Contact 3.0A



Series image - Reference only

**EU ELV
Compliant**

**EU RoHS
Compliant**

REACH SVHC
Not Contained Per -
D(2020)4578-DC (25
June 2020)

**Halogen-Free
Status**

Not Low-Halogen

For more information, please visit [Contact US](#)

China ROHS

ELV

RoHS Phthalates

China RoHS

Green Image

Compliant

Not Contained

Search Parts in this Series

[560020](#) Series

Mates With

DuraClik Crimp Housings [502351](#) , [560123](#) , [505151](#)

Voltage - Maximum 125V AC (RMS)/DC

Solder Process Data

Duration at Max. Process Temperature (seconds) 004

Lead-free Process Capability REFLOW

Max. Cycles at Max. Process Temperature 001

Process Temperature max. C 255

Material Info

Reference - Drawing Numbers

Packaging Specification PK-560020-002-JP-001

Product Specification PS-502351-001-001

Sales Drawing SD-560020-001-001, SD-560020-003-001

This document was generated on 07/27/2020

PLEASE CHECK WWW.MOLEX.COM FOR LATEST PART INFORMATION